



Spare Parts Catalog

16 S 1820 TO

Material number: 1341.002.089

Current date: 13.03.2019

ZF Friedrichshafen AG
Hauptverwaltung
80038 Friedrichshafen
Deutschland
Telefon: +49 7541 77-0
Telefax: +49 7541 77-908000
www.zf.com

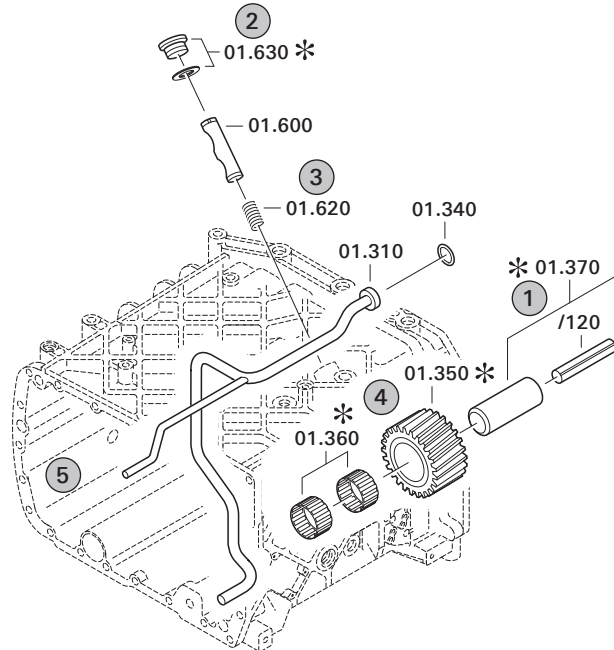
zuständiges Werk:
Friedrichshafen

Notes relating to the spare parts catalog

Setup of the spare parts catalog

- Cover sheet
- Technical Cover (only in SDM print)
- Overview of figures
- Figure
- Associated parts list
- Next figure
- Associated parts list
- ...

Figure and parts list



Overview of figures

Bildtafel Figure	Sachnummer Product number	Benennung (Description)	Technische Info Technical info	Description (Benennung)	Menge Quantity	Einheit Unit
068.08.17	1316.170.001	AUSLEGER	WL	SHIFT TURRET	1	Stk
068.08.06	1316.170.031	DECKEL	WL*H-H*VM	COVER	1	Stk
068.08.14	1316.170.808	DECKEL	WL*AUSL+GEH*H-H*HF160N	COVER	1	Stk
08	1316.170.441	ANSCHLUSSTEILE	WL*NG-VORB*RG-SCHL*168N*BAJONETT	CONNECTING PARTS	1	Stk

The "gap" indicates that there is no separate graphics panel (poster) for this assembly
The parts of this assembly are shown with the same mid-section number on the figure

1 Positions and subpositions

Pos.	Sachnummer Product number	Benennung (Description)	Technische Info Technical info	Description (Benennung)	Menge Quantity	Einheit Unit
0370	1315.201.054	RUECKLAUFBOLZEN	KPL.16S151*SG*L= 79	REV.IDLER SHAFT	1	Stk
/0120	0631.329.293	SPANNSTIFT		SLOT. PIN	1	Stk

Positions marked with "/" are the individual items of a completion
For example: Position 0370 contains a centering pin with the position /0120

2 Combinations with standardized parts

Pos.	Sachnummer Product number	Benennung (Description)	Technische Info Technical info	Description (Benennung)	Menge Quantity	Einheit Unit
0630		VERSCHL.SCHR.		SCREW PLUG	1	Stk
	0636.302.067	VERSCHL.SCHR.		SCREW PLUG	1	Stk
	0634.801.249	DICHTRING	A 26 X 31	SEALING RING	1	Stk

The parts list shows the components included in the combination of standardized parts

3 Depiction of position/item number on the figure and in the parts list

01.620 - on the figure 01 relates to the assembly in which the position is included. Due to program-related reasons, it is shown on the figure.

0620 - in the parts list

Pos.	Sachnummer Product number	Benennung (Description)	Technische Info Technical info	Description (Benennung)	Menge Quantity	Einheit Unit
0620	0732.040.736	DRUCKFEDER		COMPRESSION SPRING	1	Stk

4 *-Positions

Positions marked with an * are optional i.e. inclusion in the parts list is not mandatory.
The following note is shown on the figure

je nach Stücklistenausführung
depending on spec. number
*
suivant la nomenclature
secondo la distinta base

5 Parts, dotted display

Parts with dotted display on the figure are only used for orientation of other parts



Pos.	Information	Amendment number
001	Use case -----	
002	Customer KAMAZ PUBLIC JOINT STOCK COMPANY	
003	City Naberezhnye Chelny	
004	DUNS 64-493-2113	
005	Vehicle / Apparatus -----	
006	Sales Name KAMAZ 6520	
007	Manufacturer KAMAZ PUBLIC JOINT STOCK COMPANY	
008	Engineering Name	
009	Product Use TRUCK	
010	Vehicle/Hardware Type DUMPER	
011	SOP	
012	Engine	
013	Sales Name	
014	Manufacturer KAMAZ PUBLIC JOINT STOCK COMPANY	
015	Eng.Displ.	
016	Cylinder	
017	Nom. power 265 kW	
018	RPM at nom. power 2200 1/min	
019	Nom. torque 1430 Nm	
020	RPM at nom. torque 1300 1/min	
021	Classification use case -----	
022	DESIGNATION, CLUTCH MFZ430	
023	MANUFACTURER, CLUTCH ZF-SACHS	
024	TOTAL NUMBER OF WHEELS 6	
025	NUMBER OF DRIVING WHEELS 4	
026	DYNAMIC TYRE RADIUS 546 mm	
027	REAR AXLE RATIO 6.33	
031	PERMISS.GROSS VEHICLE WEIGHT 33 t	
033	Product description -----	
036	INSTALLATION POS TRANSMISSION HORIZONTAL LEFT	
037	TRANSMISSION ATTACHMENT FLANGE-MOUNTED	
038	RATIO, BOTTOM GEAR 13.8	
039	RATIO, TOP GEAR .84	



Pos.	Information	Amendment number
040	RATIO, 1ST GEAR 13.8	
041	RATIO, 2ND GEAR 11.54	
042	RATIO, 3RD GEAR 9.49	
043	RATIO, 4TH GEAR 7.93	
044	RATIO, 5TH GEAR 6.53	
045	RATIO, 6TH GEAR 5.46	
046	RATIO, 7TH GEAR 4.57	
047	RATIO, 8TH GEAR 3.82	
048	RATIO, 9TH GEAR 3.02	
049	RATIO, 10TH GEAR 2.53	
050	RATIO, 11TH GEAR 2.08	
051	RATIO, 12TH GEAR 1.74	
052	RATIO, 13TH GEAR 1.43	
053	RATIO, 14TH GEAR 1.2	
054	RATIO, 15TH GEAR 1	
055	RATIO, 16TH GEAR .84	
056	RATIO, 1ST GEAR REVERSE 12.92	
057	RATIO, 2ND GEAR REVERSE 10.8	
058	SET OF RATIOS SG	
059	RATIO RANGE BASIC DG	
060	NUMBER OF PLANETARY GEARS 5	
061	RATIO PLANETARY GEAR SET 4.565	
062	VER. SPLINE PLANETARY GEAR SET OBLIQUE TOOTHING	
063	DESIGN, SHIFT SYSTEM TURNING SHAFT	
064	POSITION, GEAR SHIFT SYSTEM HORIZONTAL LEFT	
065	DESIGN, SHIFT PATTERN H-H	
066	VERSION SHIFT SUPPORT WITHOUT GROOVE	
067	VERSION ACTUATION SHIFT SYSTEM MECHANICAL	
070	VERSION TUBE R/C PLASTIC-FORM-PIPE	
071	VERSION TUBE SERVO WITHOUT PIPING	
073	DESIGN DOWNSHIFT GATE INTERLOCK WITHOUT GROOVE	
074	VERSION TUBE GATE INTERLOCK WITHOUT PIPING	
075	1ST CUSTOMER SPEC SHIFT SYSTEM WITHOUT GROOVE	



Pos.	Information	Amendment number
076	2ND CUSTOMER SPEC SHIFT SYSTEM WITHOUT GROOVE	
077	DIA THROTTLE MAIN CUTOFF VALVE 1.55 mm	
078	NO. TAPPETS MAIN CUTOFF VALVE 2	
079	POS. AIR CON MAIN CUTOFF VALVE F	
082	SELECTION PATTERN VARIANT GEAR SHIFT PATTERN 1	
083	DESIGN, SEPARATING CLUTCH FULL-SYNCHRONIZED	
084	VERSION OF SYNCHRONIZER 1 1.+2.GEAR DK-SYNCHRONIZATION	
085	VERSION OF SYNCHRONIZER 2 3.+4.GEAR BK-SYNCHRONIZATION	
086	REFERENCE LENGTH INPUT SHAFT 109 mm	
087	STANDARD TYPE INPUT SHAFT SAE	
088	NUMBER OF WEDGES INPUT SHAFT 10	
089	VERSION OF INPUT SHAFT FORM C	
090	NOMINAL DIAMETER INPUT SHAFT 2 in	
091	DIAMETER, JOURNAL, INPUT SHAFT 25 mm	
092	TYPE FIT SPIGOTS INPUT SHAFT F7	
093	VER. BEAR. SPIGOTS INPUT SHAFT TAPER ROLLER	
094	LENGTH, INPUT SHAFT 382.5 mm	
095	DIAMETER SHAFT OF INPUT SHAFT 50.3 mm	
096	LENGTH, PROFILE, INPUT SHAFT 120 mm	
097	BUSH VARIANT INPUT SHAFT WITHOUT GROOVE	
098	VERSION BEARING CONSTANT 1 GL	
099	DIAMETER BEARING INPUT SHAFT 99.916 mm	
100	TYPE FIT BEAR. INPUT SHAFT H5	
101	DESIGN,CONN., CLUTCH HOUSING SAE 1	
102	CENTR.DIA,HSG/ENGINE CONNECT. 511.175 mm	
103	NUMBER OF BORES,ENGINE CONN. 12	
104	BORE DIA, ENGINE CONNECTION 11 mm	
106	VERSION OF CLUTCH HOUSING INTEGRATED	
108	VERSION ENGINE CONNECTION NOT FORDABLE	
109	POSITION MOUNT. FACE HOUSING 2 WITHOUT GROOVE	
110	LENGTH CLAMP. FLAP RH ENG CONNECT. 292 mm	
115	TYPE OF RELEASE MECHANISM WITH	
116	LENGTH, RELEASE BEARING 89.000 mm	



Pos.	Information	Amendment number
117	OUTER DIAMETER RELEASE BEARING 60.200 mm	
118	REF.LENGTH,RELEASE BEAR.FLAN -7 mm	
119	DIAMETER, RELEASE FLANGE 60 mm	
120	TYPE FIT RELEASE BEARING FLA. F8	
121	DIAMETER BEARING BUSH RELEASE UNIT LH 35 mm	
123	VERSION OF CLUTCH CYLINDER WITH	
124	ASSEMBLY POS. CLUTCH CYLINDER 6	
125	OUTER DIA. OUTPUT FLANGE RA 180 mm	
127	NO.OF SCREWS OUTPUT FLANGE RA 4	
129	DIA. THREAD OUTPUT FL. SCR. RA M14	
130	THREAD PITCH OUTPUT FL SCR. RA 1.5 mm	
131	THREAD LENGTH OUTP.FL SCREW RA 50 mm	
133	REF. LENGTH OUTPUT FLANGE RA 211.5 mm	
134	DIMENSION SHIFT TURRET DIST. 256 mm	
135	MEAS. LOC. SHIFT TURRET DIST. SHIFT LEVER-LOCATION	
145	SHIFT LEVER CONNECTION KNURLING	
151	DESIGN, SHIFT PATTERN D6	
152	HANDLE SHAPE HAND LEVER 1 1B	
153	DESIGN ANCHORAGE GP-HOUSING M10+WASHER	
154	NOTE PNEUMATIC SYSTEM VALVE	
155	SPRING ARRANGEMENT Q3	
156	SPRING FORCE DETENT PLUNGER RG 150 N	
157	HUMP SPRING FORCE, OUTSIDE 120 N	
158	HUMP SPRING FORCE, CENTRE 70 N	
160	SELECTOR SPRING FORCE, OUTSIDE 100 N	
161	SELECTOR SPRING FORCE, INSIDE 26 N	
162	SPRING FORCE,GEAR DETENT NG+GG 168.000 N	
163	SPRING FORCE OUTS. DETENT NEUT 200 N	
164	ALLOCATION DETENT LEVER VER. A	
165	SWITCH, REVERSE GEAR y	
166	DESIGN, RG (REV.GEAR) SWITCH CLOSING	
167	DESIGN, CONNECTION, RG SWITCH DIN BAYONET	
168	CODE SWITCH RG A1	



Pos.	Information	Amendment number
169	PROT.CAP SWITCH, REVERSE GEAR y	
170	NOTE ON SWITCH, REVERSE GEAR G.SHIFT SHAFT	
171	SWITCH, NEUTRAL GEAR y	
172	DESIGN,NG(NEUTRAL GEAR)SWITCH OPENING SWITCH	
173	DESIGN, CONNECTION, NG SWITCH DIN BAYONET	
174	CODE SWITCH NG A1	
175	PROT.CAP SWITCH, NEUTRAL GEAR y	
196	FUNCTION OF R/C SWITCH GP	
197	DESIGN, GP SWITCH CLOSING	
198	DESIGN, CONNECTION, GP SWITCH DIN BAYONET	
200	PROTECTING CAP GP SWITCH y	
201	FUNCTION OF S/G SWITCH GV	
202	DESIGN, GV SWITCH PREPARED	
205	PROTECTING CAP GV SWITCH n	
237	ATTACHM.POS.HEAT EXCHANGER IN FRONT LEFT PREPARED	
238	VER. TRANSMISSION VENTILATION PLUG CONNECTION 90 DEGREE	
239	LENGTH, VENT TUBE 2200.000 mm	
240	POS.TRANSMISSION VENTILATION IN FRONT	
249	VERSION PULSE SENSOR SFA H68 WITH	
250	DESIGN PULSE SENSOR H68 KITAS II	
251	DESIGN CONN.PULSE SENSOR SFA H68 DIN BAYONET	
252	NOTE PULSE SENSOR H68 ADR-EXPLOSION-PROOF	
253	PROT.CAP PULSE SENSOR SFA H68 y	
254	NO. PULSES PULSE SENSOR SFAH68 6.000 IMP/U	
255	DESIGN PULSE SENSOR SFI H68	
256	DESIGN CONN.PULSE SENSOR SFI H68	
257	PROT.CAP PULSE SENSOR SFI H68	
258	NO.OF PULSES PULSE SENSOR SFI H68 IMP/U	
259	VER. PULSE SENSOR TRANSM. H70 WITHOUT GROOVE	
263	PROT.CAP PULSE SENSOR TM H70 n	
264	NO PULSES PULSE SENSOR TM H70 6 IMP/U	
265	ASSEMBLY POS PULSE SENSOR H70 1	
266	NOTE ASS. POS PULSE SENSOR H70 INSTALLATION DRAWING	



Pos.	Information	Amendment number
278	POSITION, OIL FILLER HOUSING LEFT+RIGHT	
279	NOTE ON OIL FILL FILL IN OVERFLOW	
280	OIL CAPACITY, GEARBOX 11 dm3	
281	OIL FILL VARIANT EX WORKS	
282	OIL GRADE PERMISSIBLE ACC. TO TE-ML02	
283	OIL CLASS FIRST FILLING E	
284	CODING OUTER CONSERVATION KA1	
285	SCOPE OUTER CONSERVATION T	
286	CODING INNER CONSERVATION KI1	
287	CONSERVATION SPECIFICATION ZFN 916	
288	COLOR JET BLACK	
289	COLOUR CLASSIFICATION ACC. TO RAL 9005	
290	PAINTING, ZF STANDARD 915 W	

Plant

Page 1 from 2

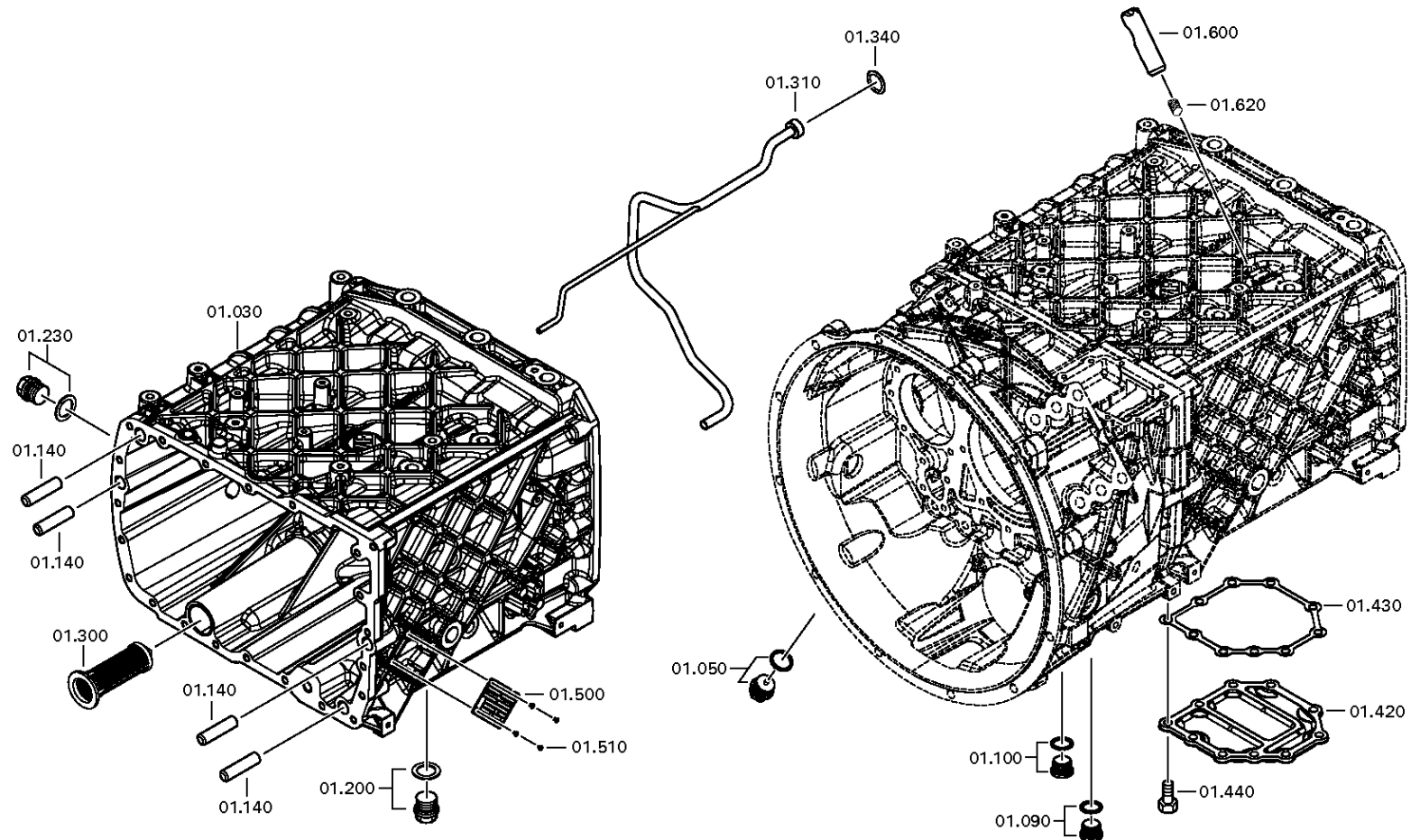
Material number: 1341.002.089

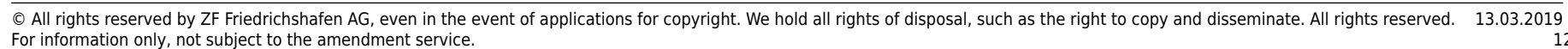
Plant: 068.01.05-1

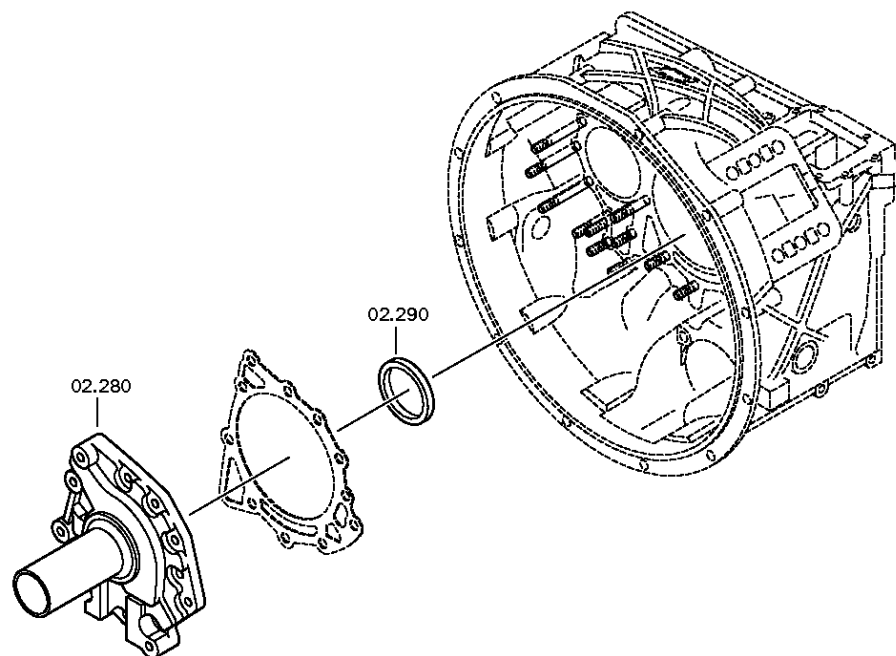
TRANSMISSION HOUSING



16 S 1820 TO /
TRANSMISSION HOUSING







Plant

Page 2 from 3

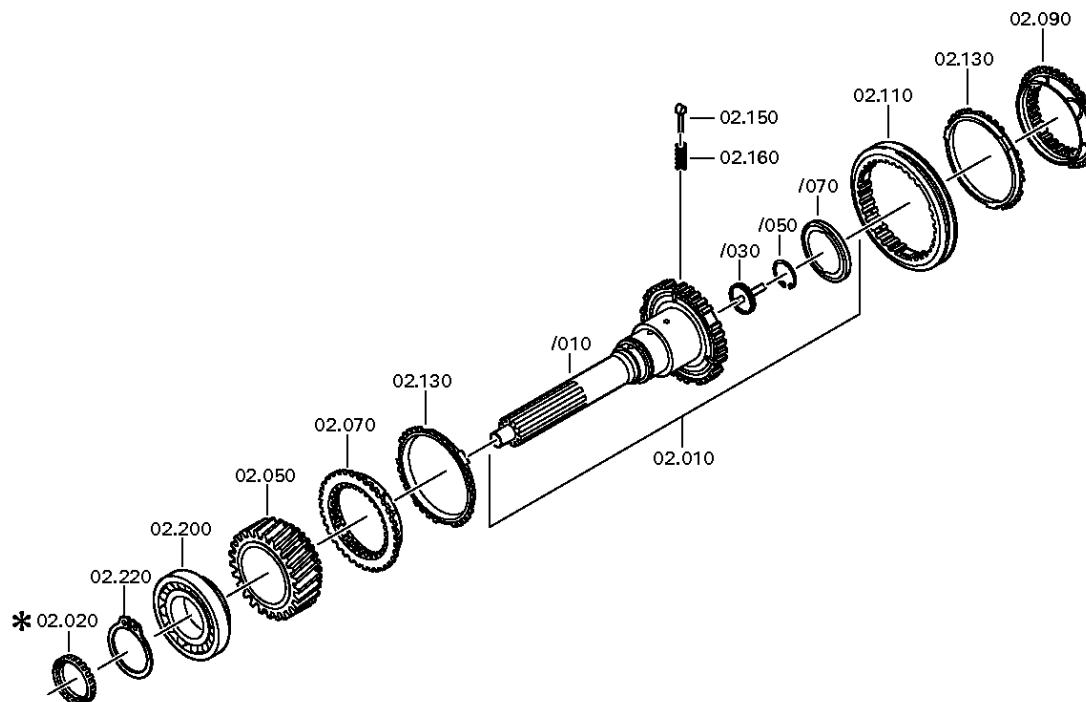
Material number: 1341.002.089

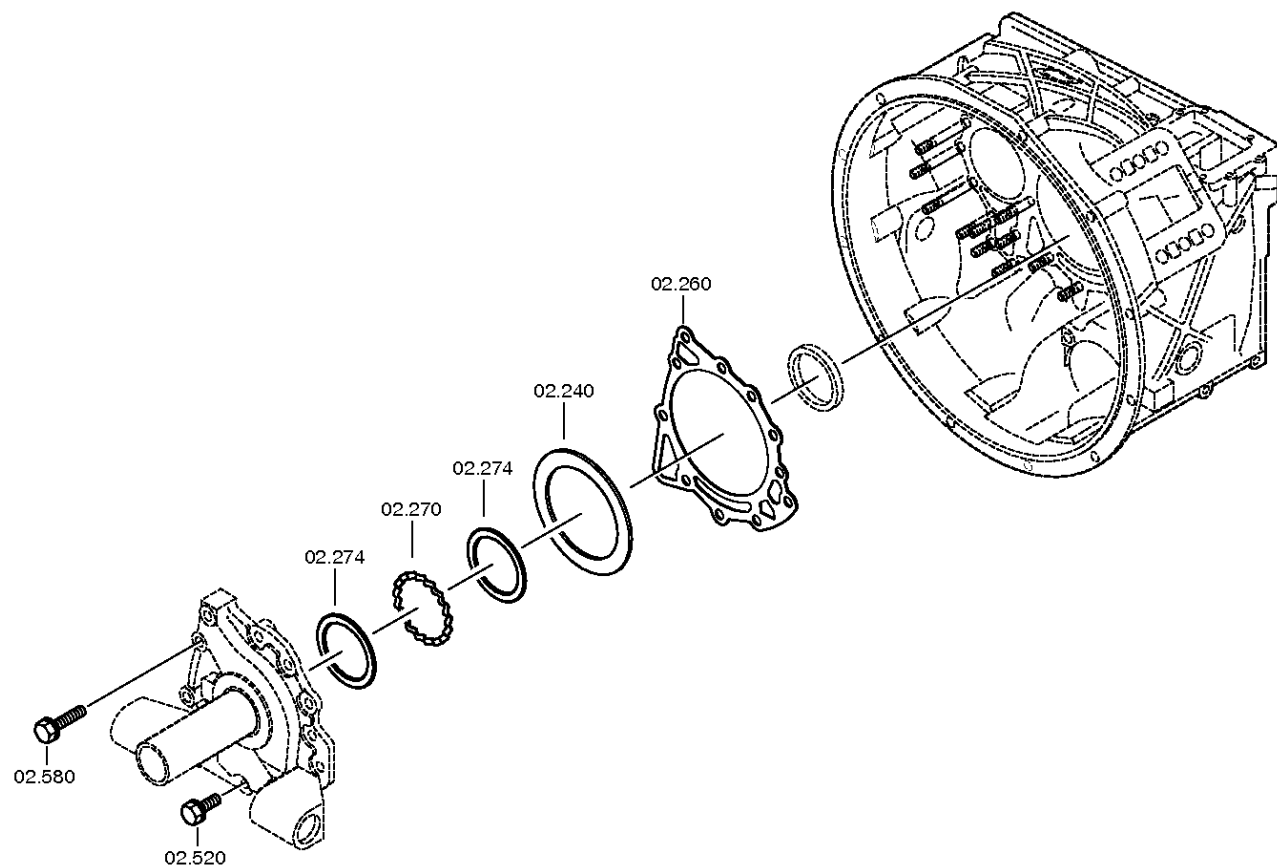
Plant: 068.02.02-1

CONNECTION PLATE



16 S 1820 TO /
CONNECTION PLATE





Plant

Page 1 from 2

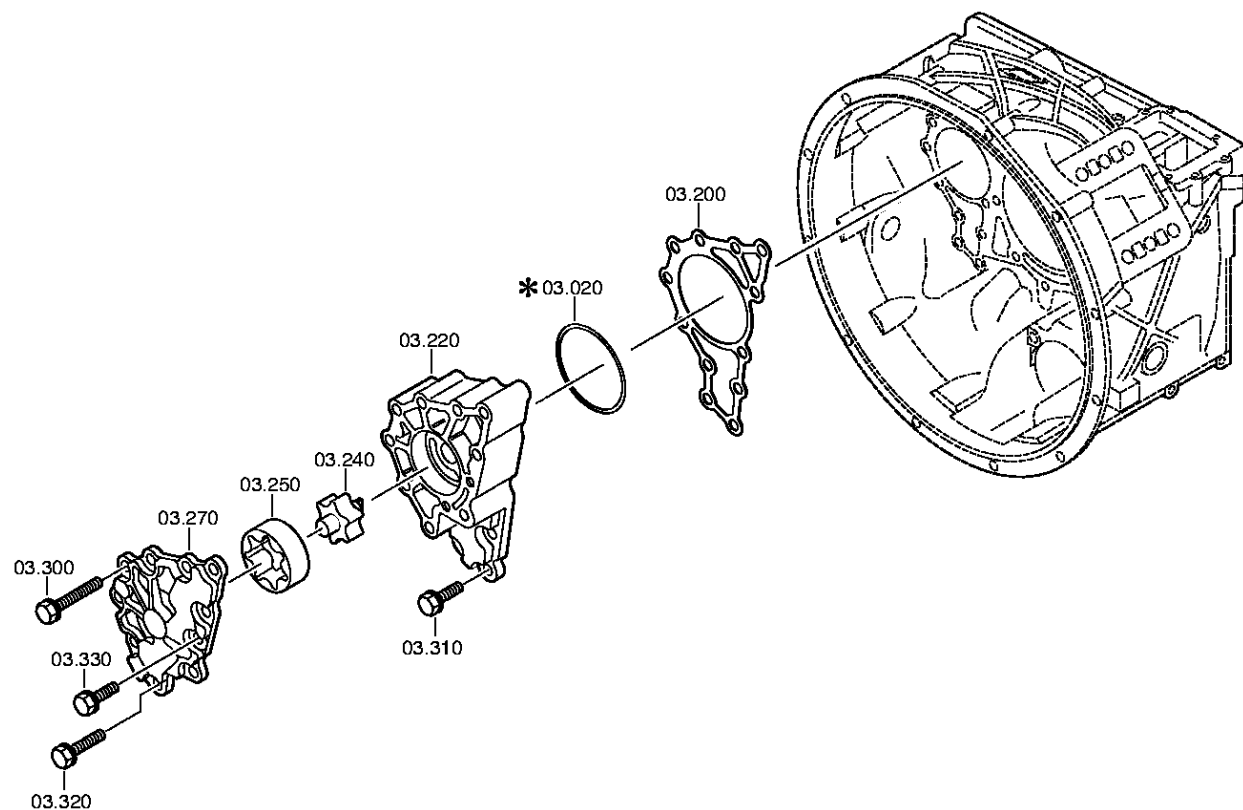
Material number: 1341.002.089

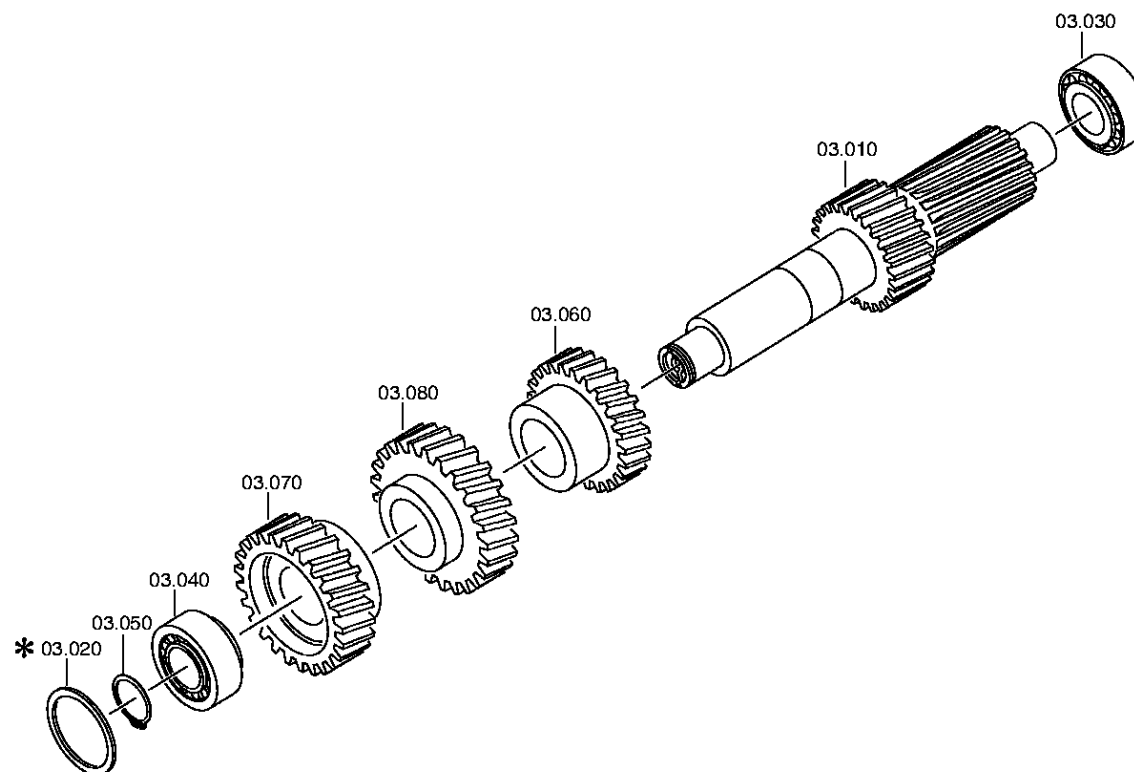
Plant: 068.03.80-1

COUNTERSHAFT



16 S 1820 TO /
COUNTERSHAFT





Plant

Page 1 from 3

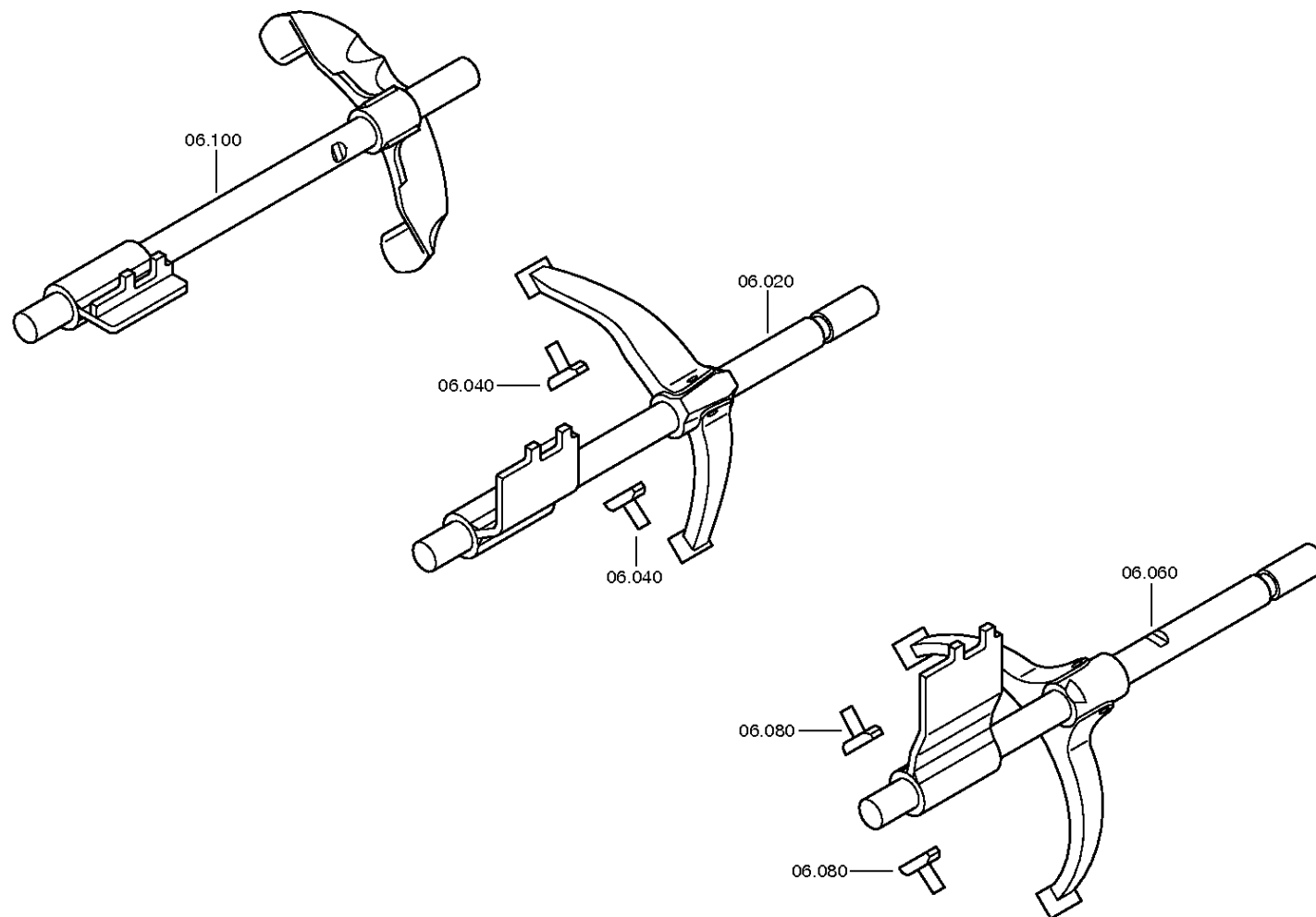
Material number: 1341.002.089

Plant: 068.06.01-1

SHIFT SYSTEM



16 S 1820 TO /
SHIFT SYSTEM



Plant

Page 2 from 3

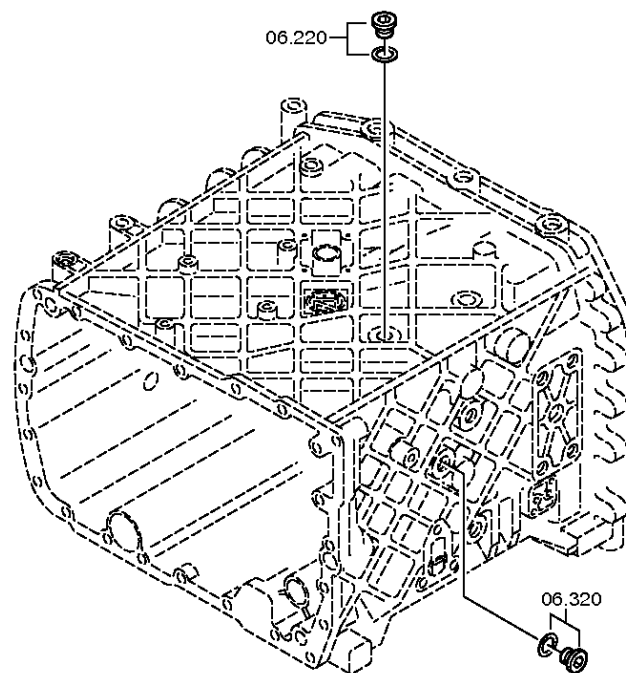
Material number: 1341.002.089

Plant: 068.06.43-1

SHIFT SYSTEM



16 S 1820 TO /
SHIFT SYSTEM



Plant

Page 3 from 3

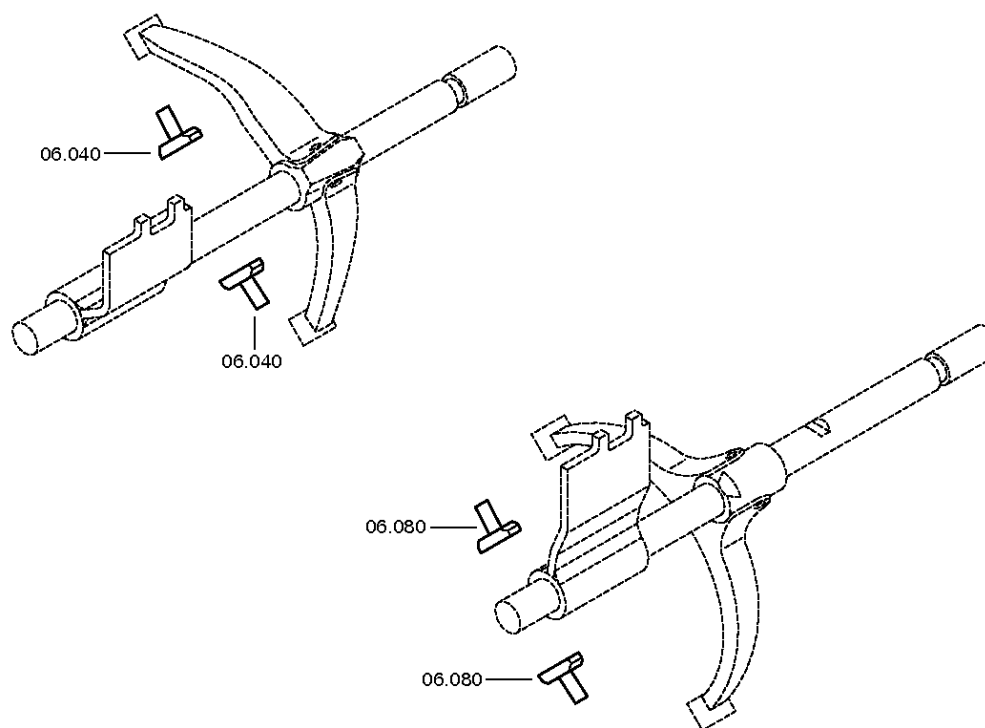
Material number: 1341.002.089

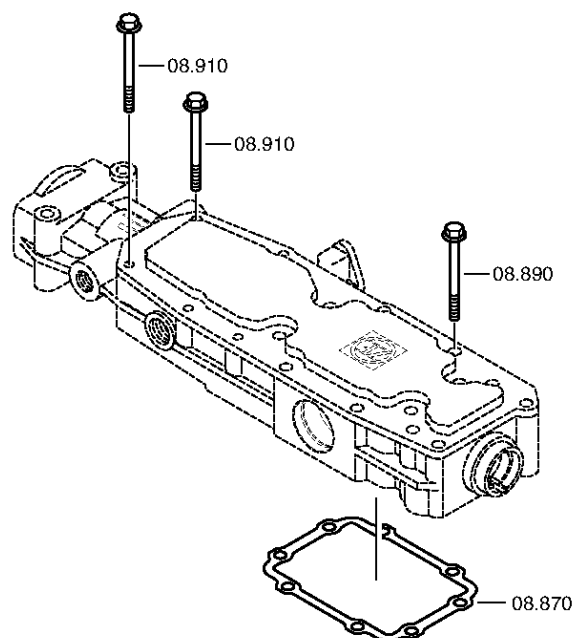
Plant: 068.06.80-1

SHIFT SYSTEM



16 S 1820 TO /
SHIFT SYSTEM





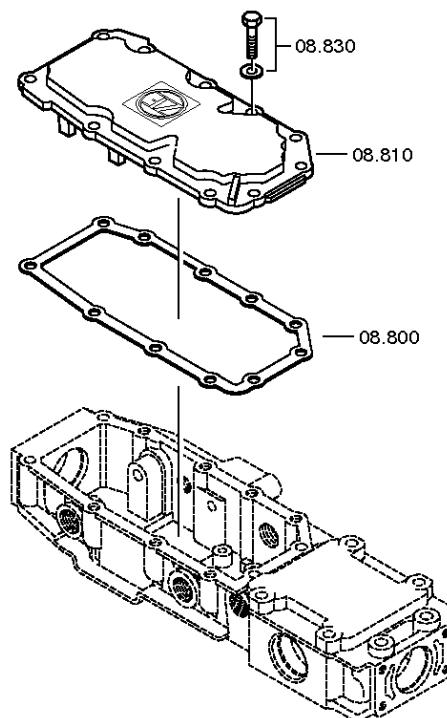
Material number: 1341.002.089

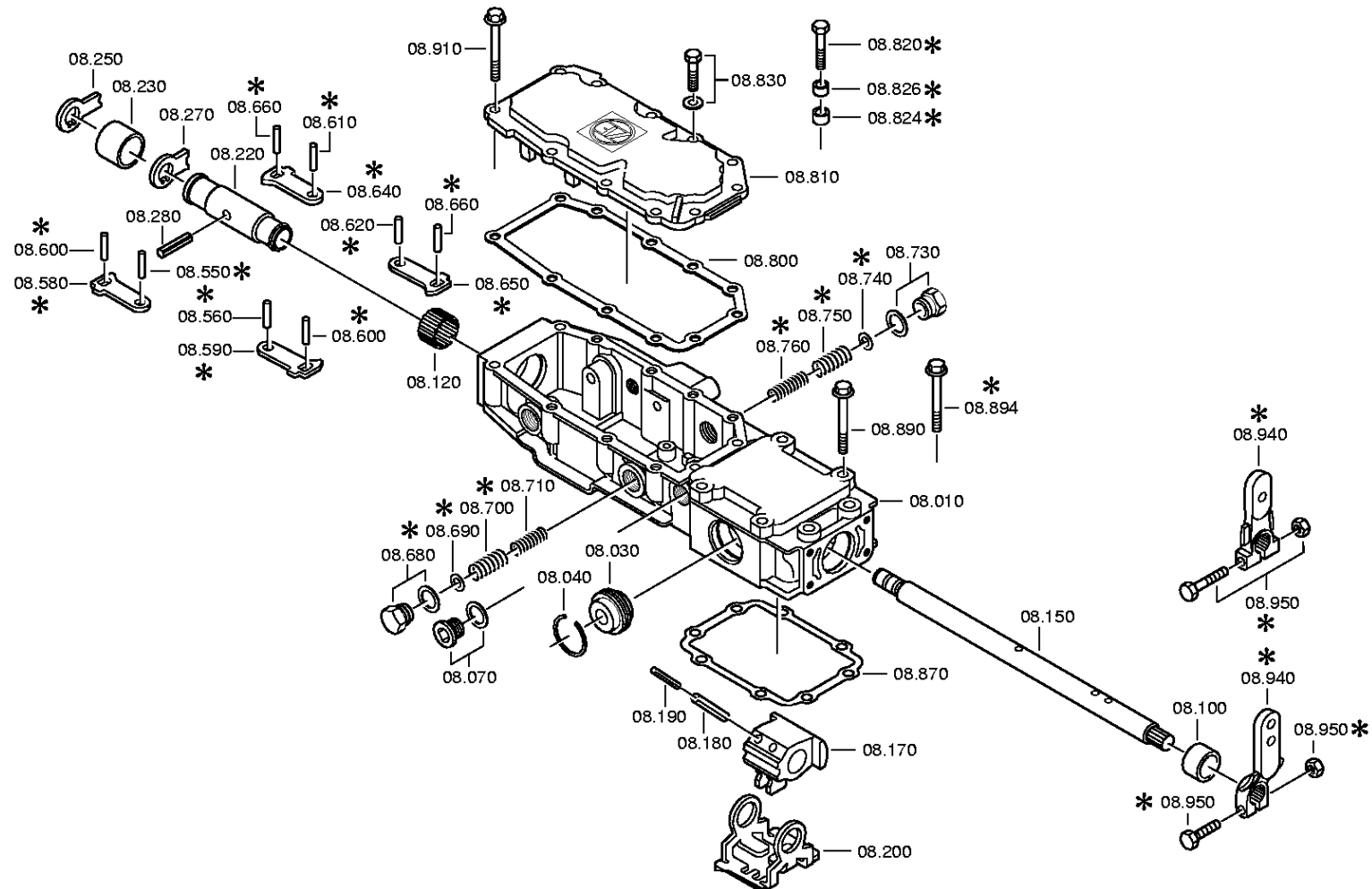
Plant: 068.07.10-1

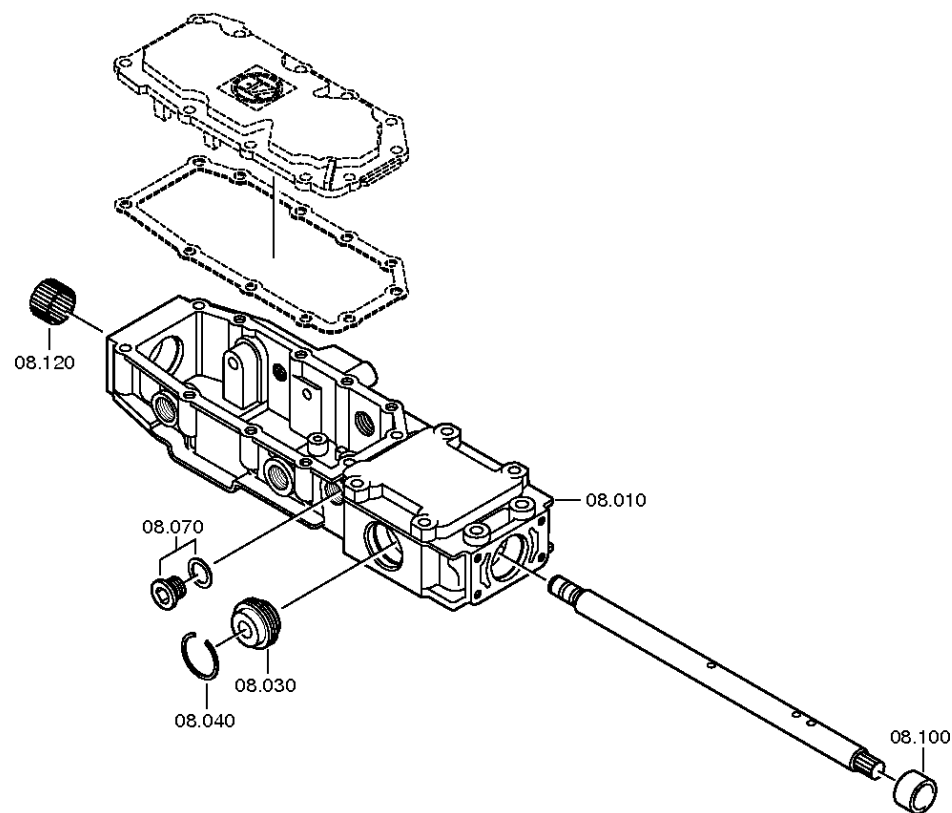
GEAR SHIFT HOUSING



16 S 1820 TO /
GEAR SHIFT HOUSING







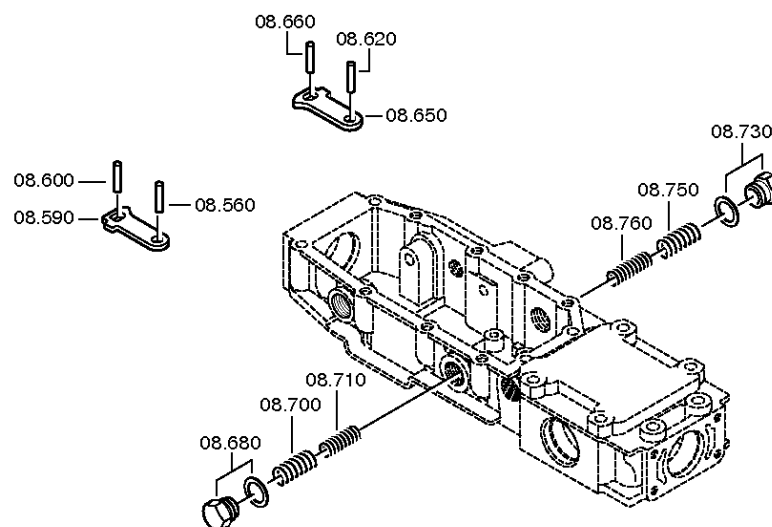
Material number: 1341.002.089

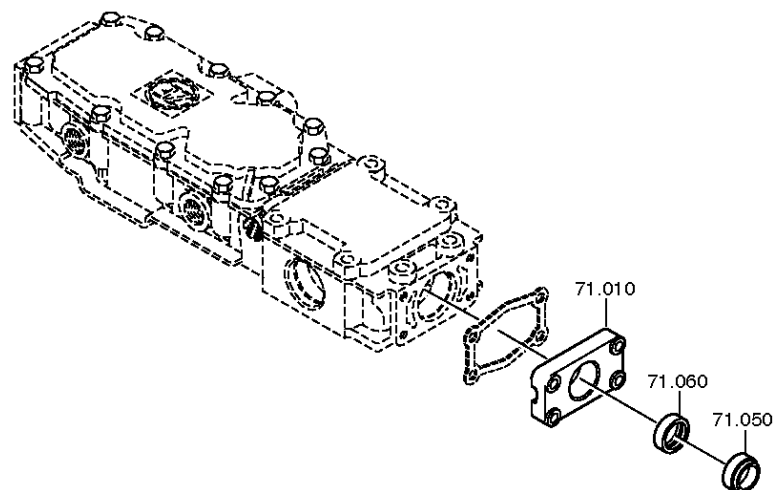
Plant: 068.07.64-1

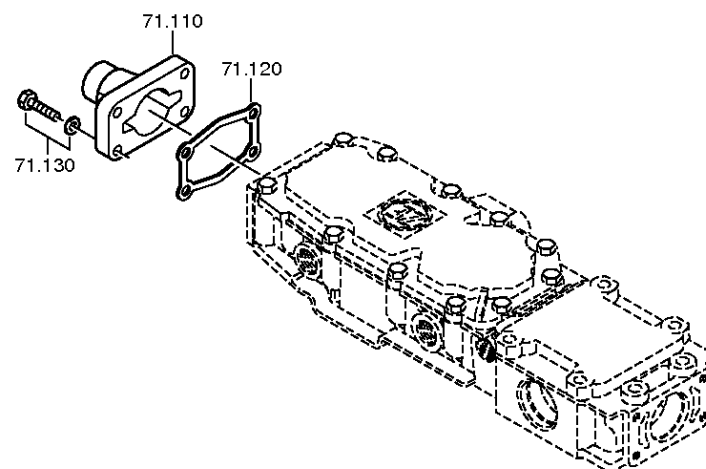
GEAR SHIFT HOUSING



16 S 1820 TO /
GEAR SHIFT HOUSING







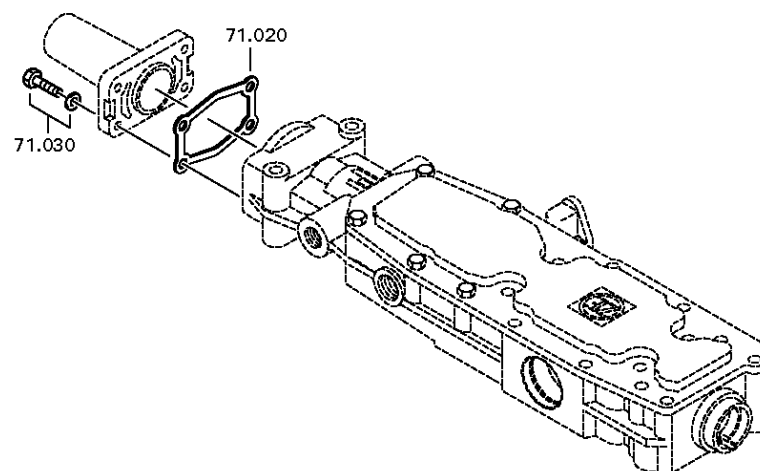
Material number: 1341.002.089

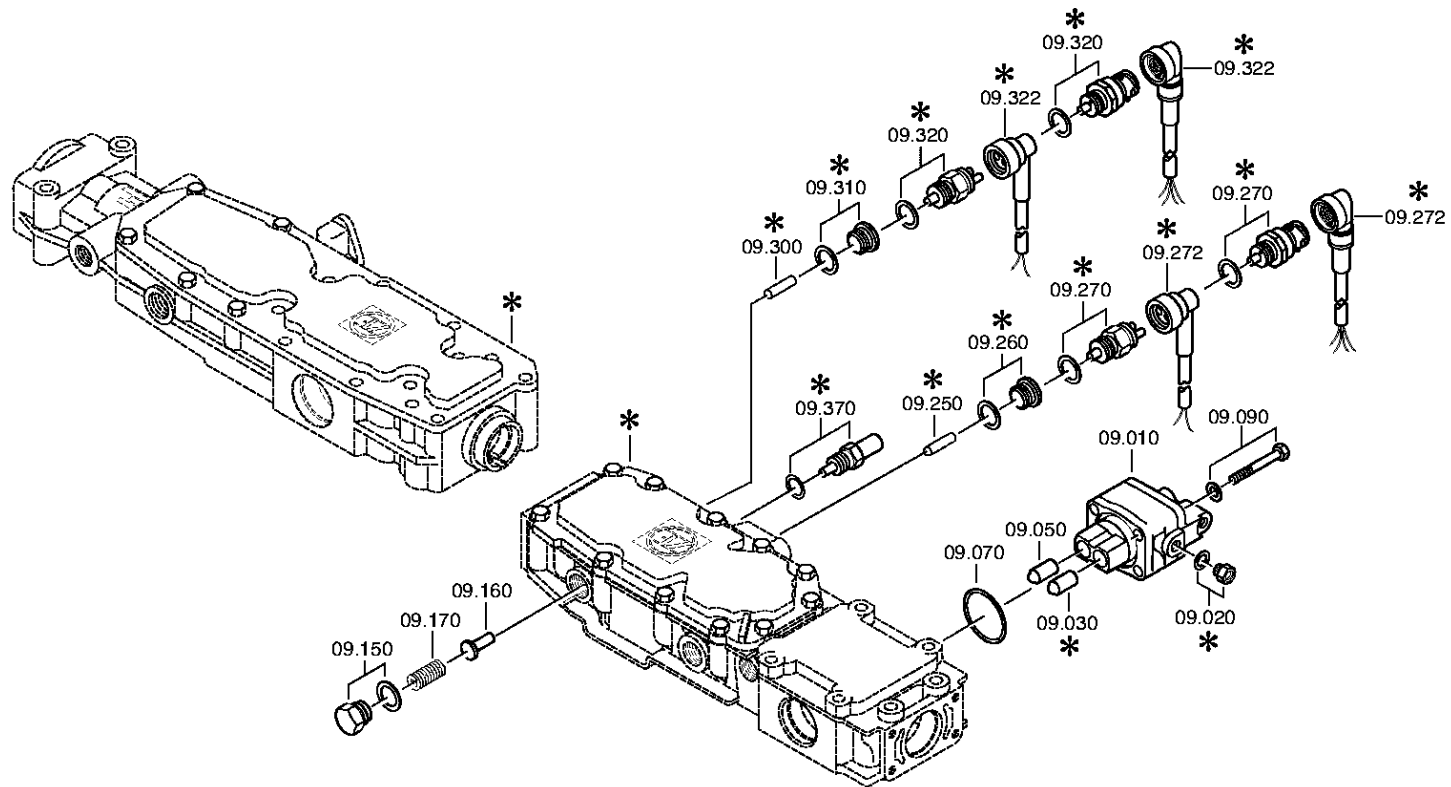
Plant: 068.08.42-1

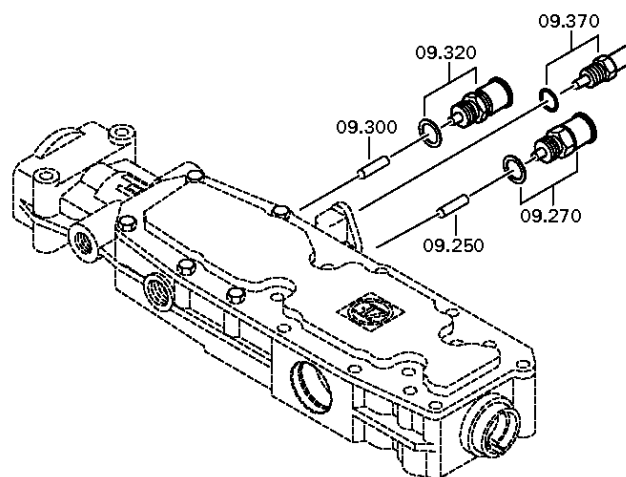
EXTENSION TOP COVER



16 S 1820 TO /
EXTENSION TOP COVER







Plant

Page 1 from 1

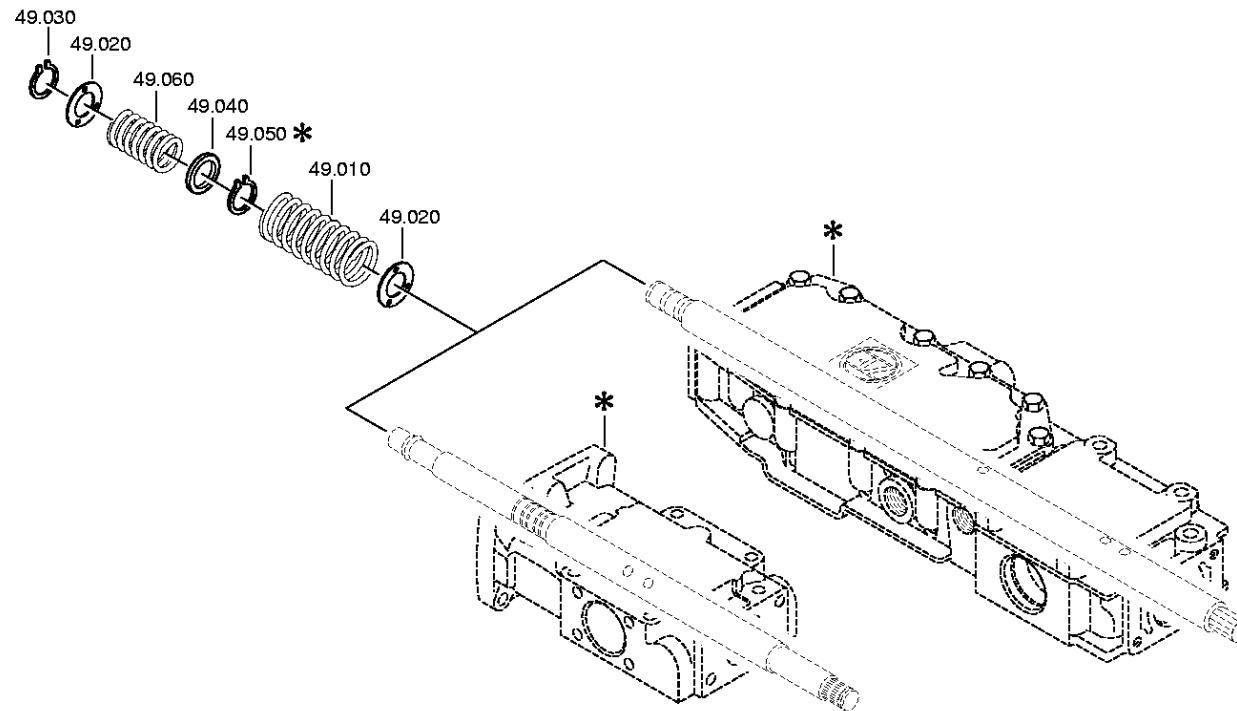
Material number: 1341.002.089

Plant: 068.12.02-1

Material-assembly-group-no: 1316.149.028



16 S 1820 TO /
SET OF SPRINGS

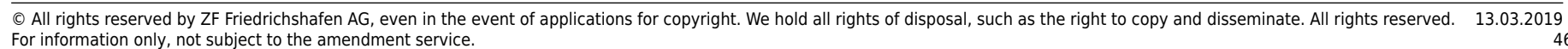


Page 1 from 2

Plant: 068.40.04-1



16 S 1820 TO /
GV-SHIFT SYSTEM



Plant

Page 2 from 2

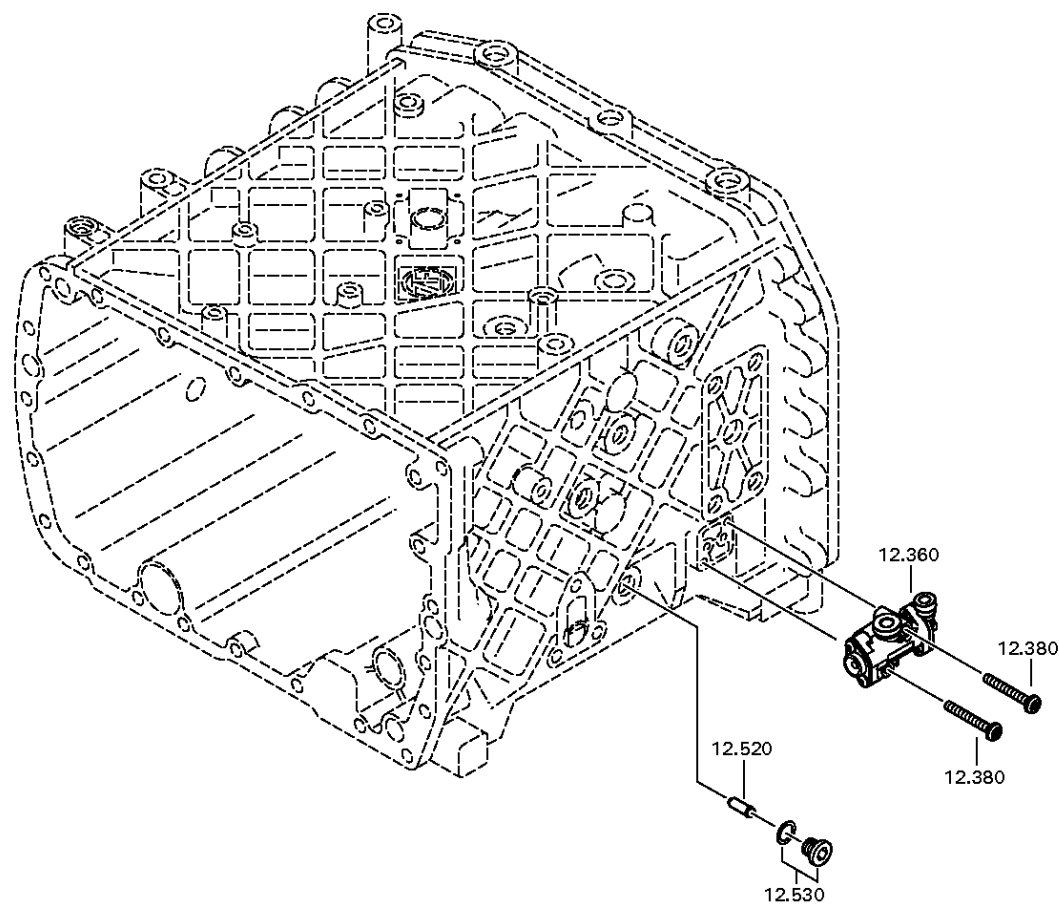
Material number: 1341.002.089

Plant: 068.40.40-1

GV-SHIFT SYSTEM



16 S 1820 TO /
GV-SHIFT SYSTEM



Plant

Page 1 from 5

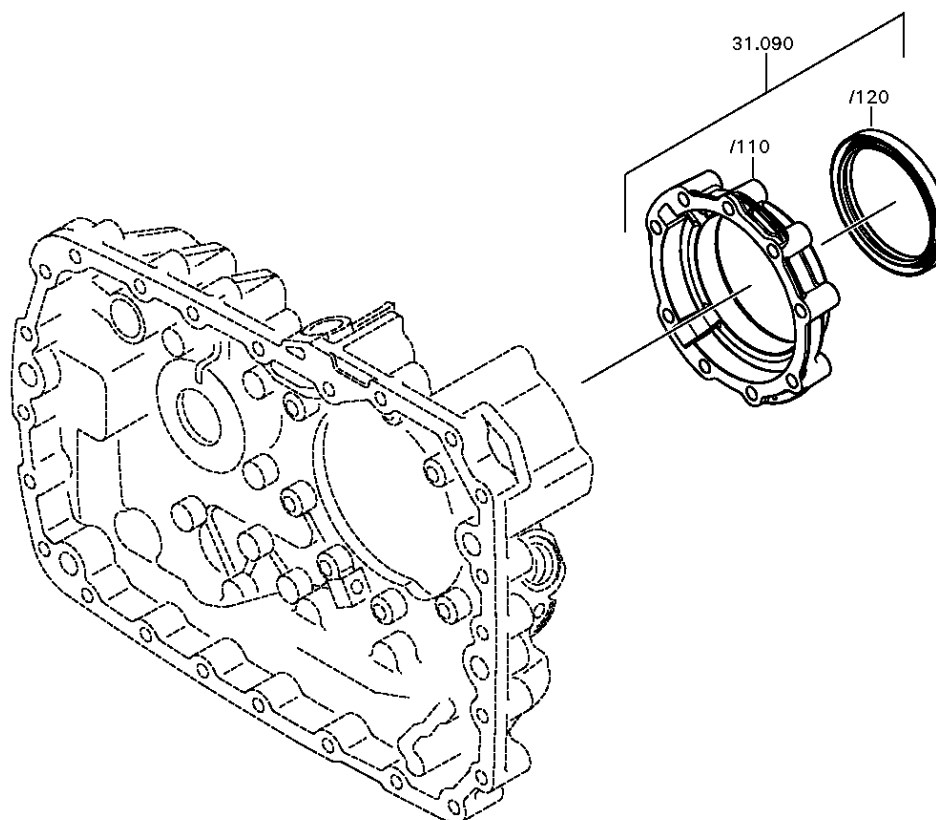
Material number: 1341.002.089

Plant: 068.43.21-1

COVER



16 S 1820 TO /
COVER



Plant

Page 2 from 5

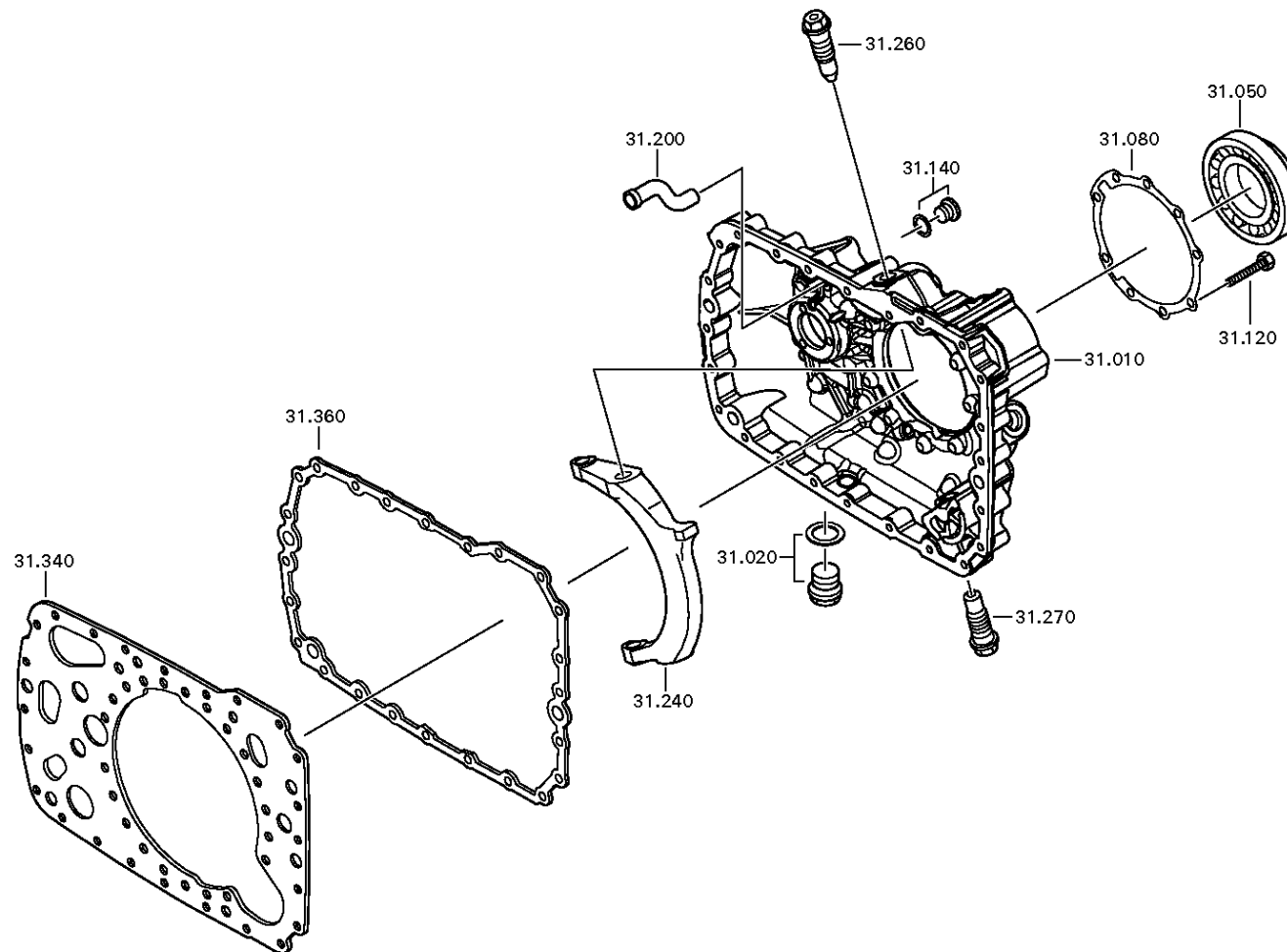
Material number: 1341.002.089

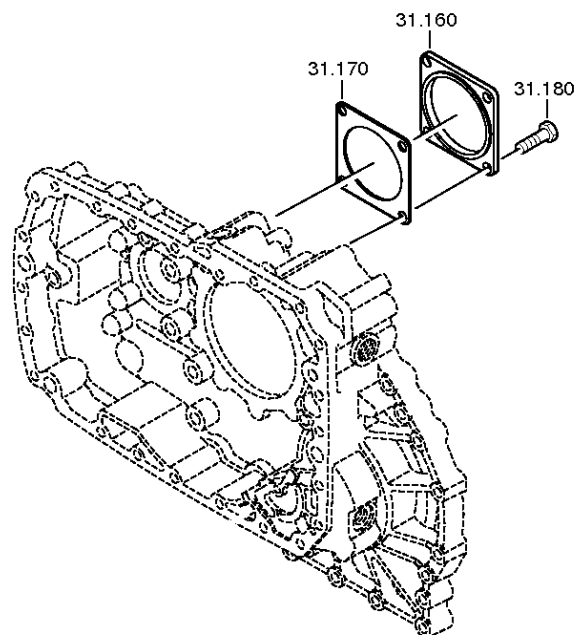
Plant: 068.43.06-1

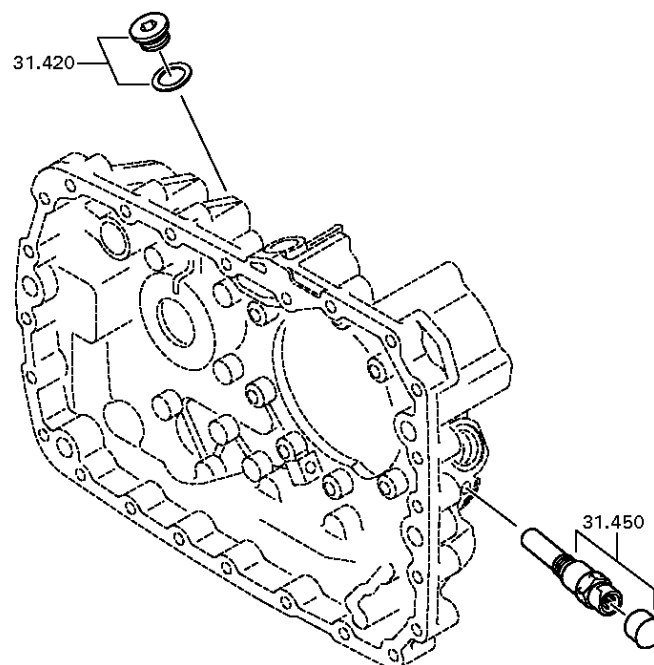
COVER

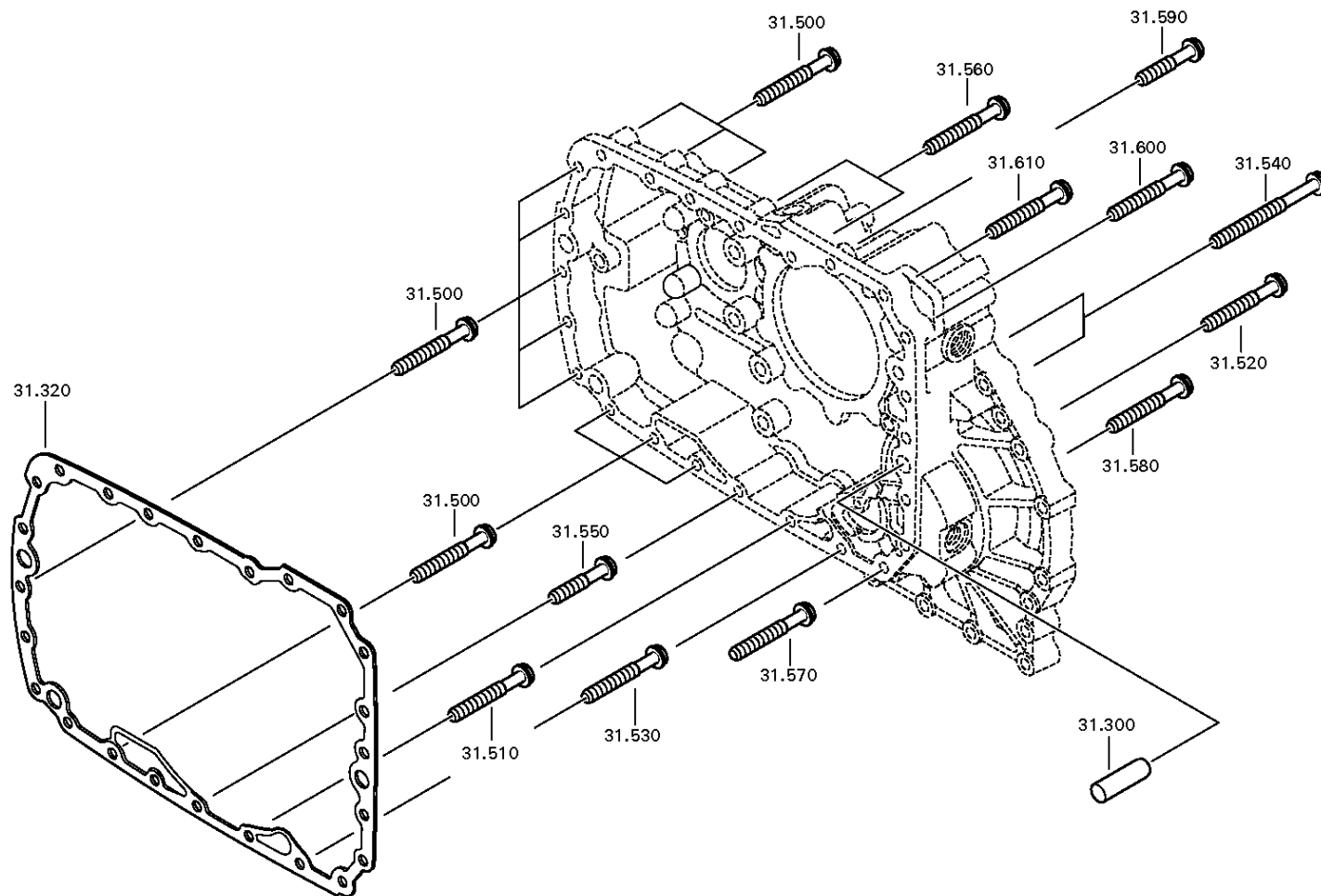


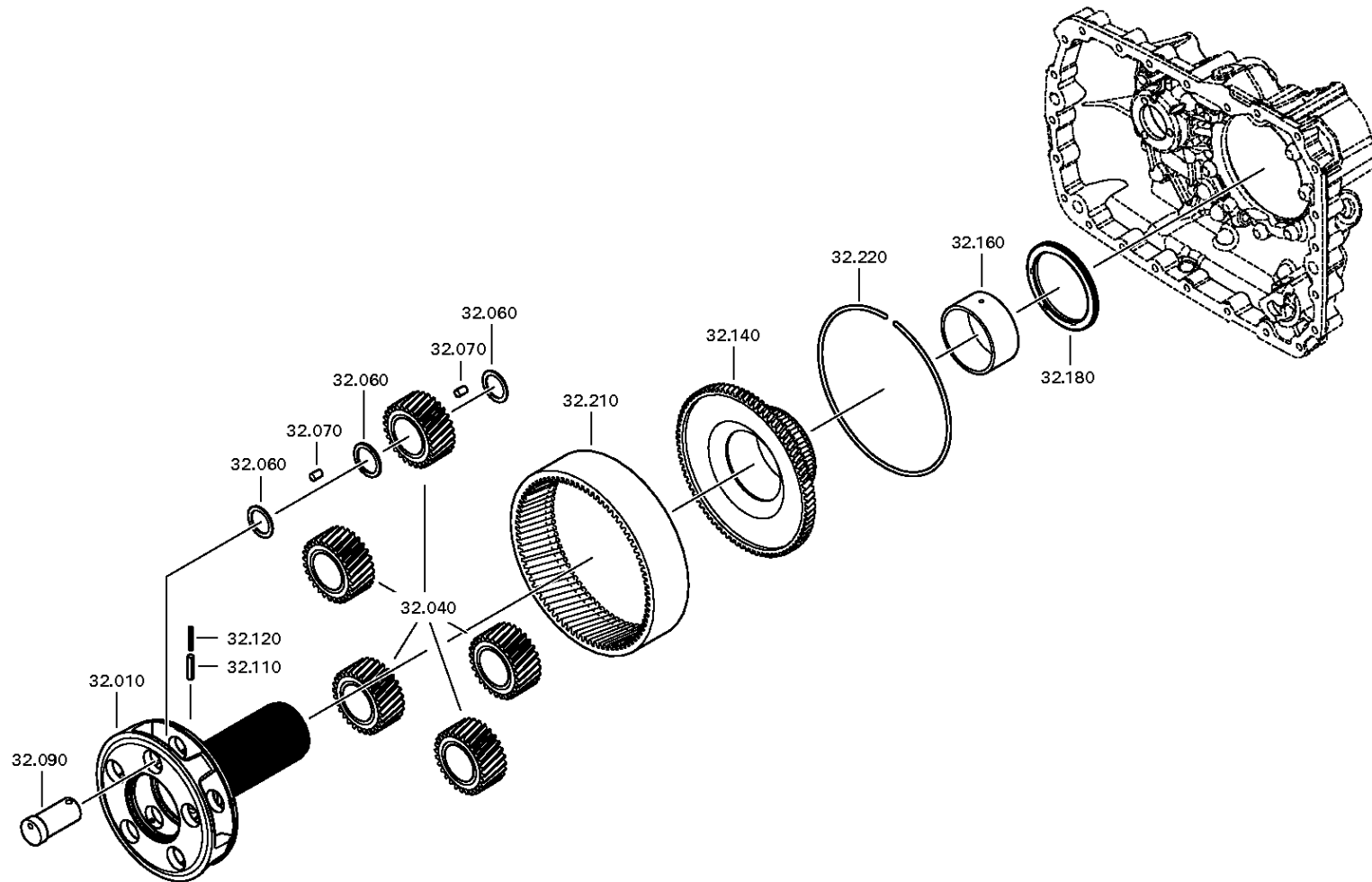
16 S 1820 TO /
COVER

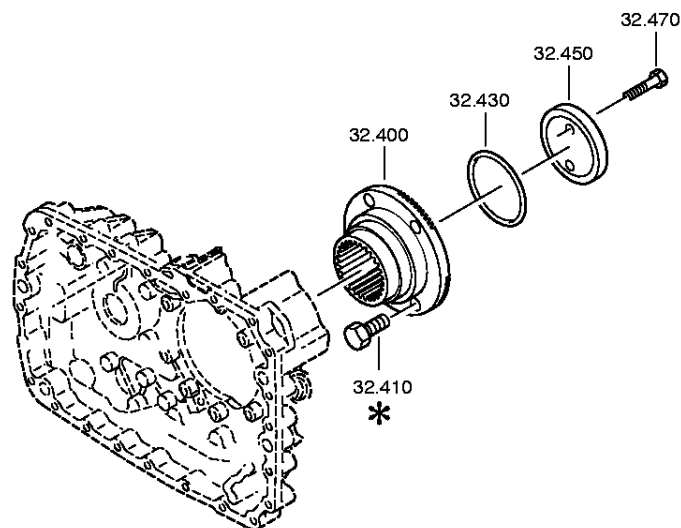


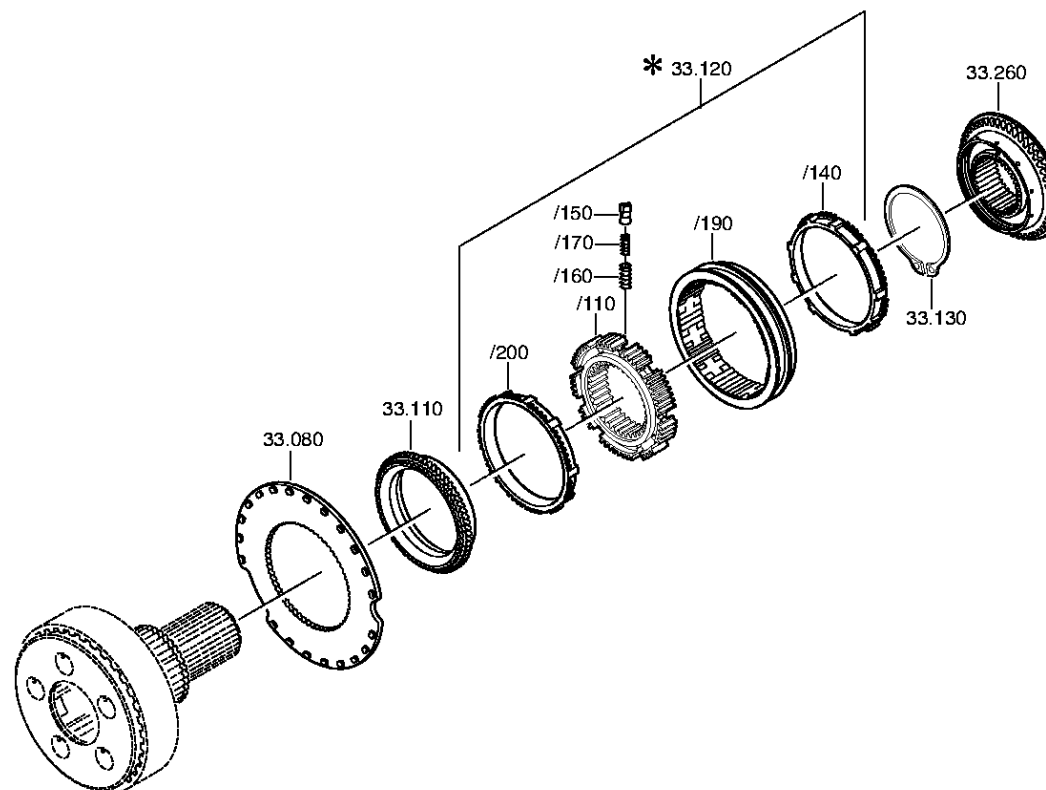












Plant

Page 2 from 2

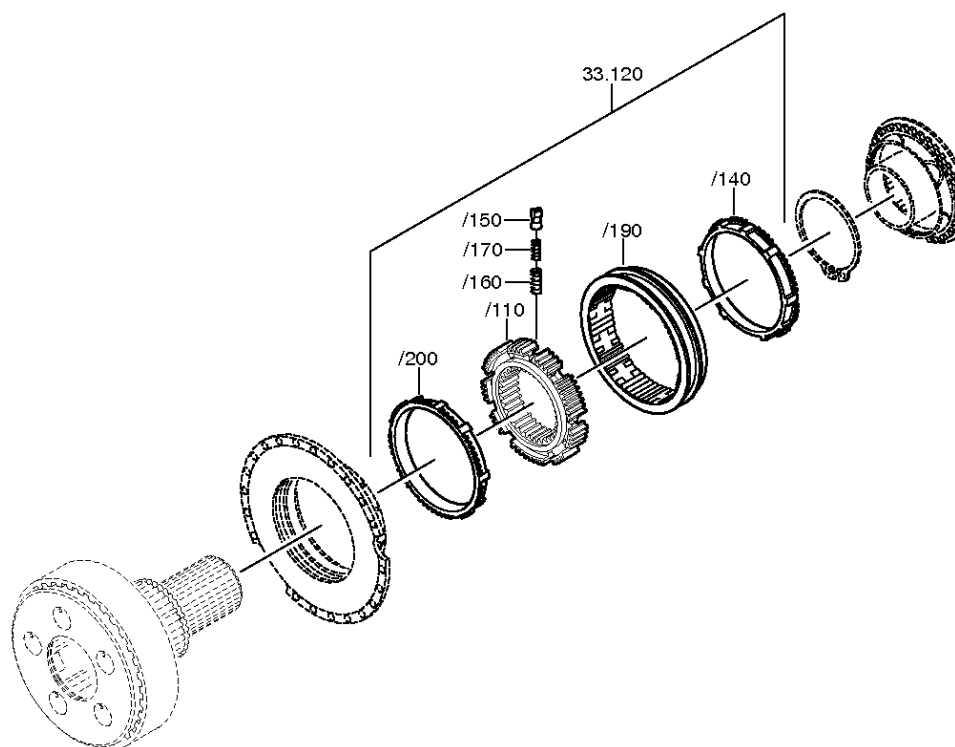
Material number: 1341.002.089

Plant: 068.45.40-1

SYNCHRONIZER



16 S 1820 TO /
SYNCHRONIZER



Plant

Page 1 from 2

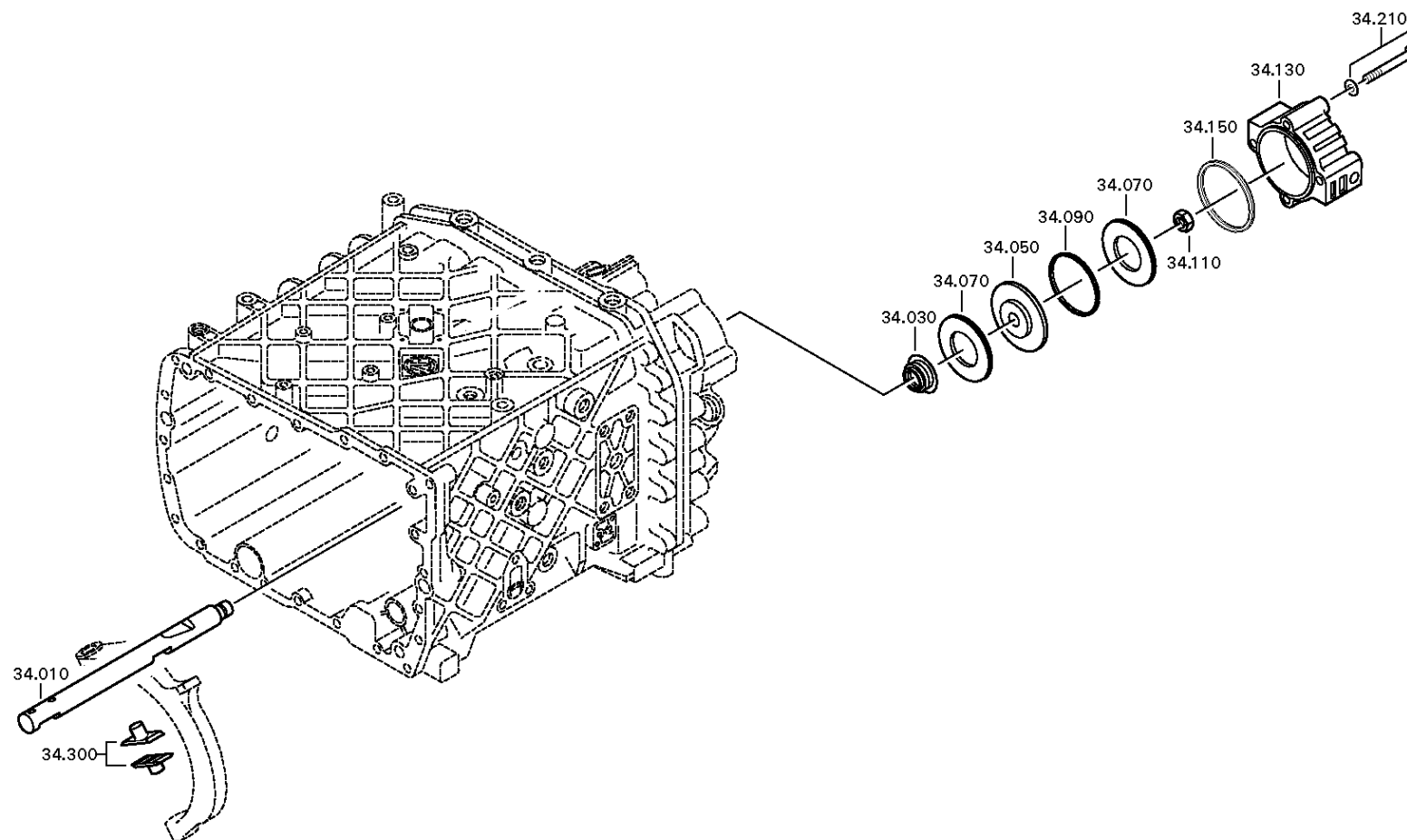
Material number: 1341.002.089

Plant: 068.46.03-1

GP SHIFT SYSTEM



16 S 1820 TO /
GP SHIFT SYSTEM



Plant

Page 2 from 2

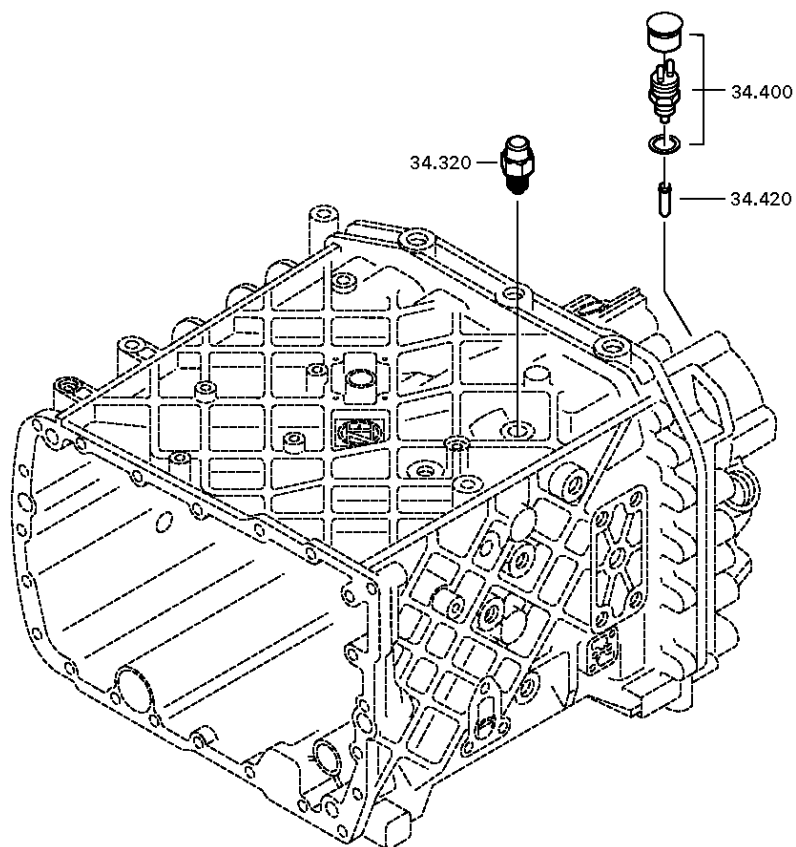
Material number: 1341.002.089

Plant: 068.46.40-1

GP SHIFT SYSTEM



16 S 1820 TO /
GP SHIFT SYSTEM



Plant

Page 1 from 1

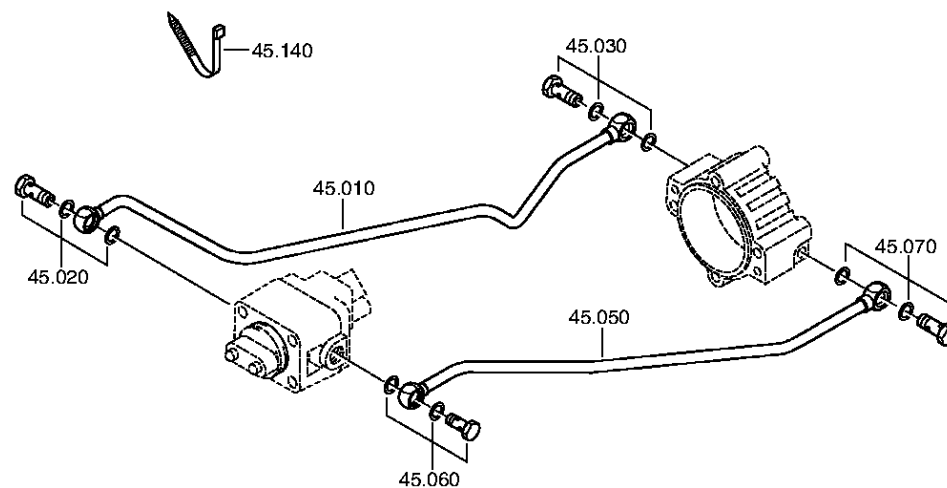
Material number: 1341.002.089

Plant: 068.57.04-1

Material-assembly-group-no: 1315.145.004



16 S 1820 TO /
RANGE SELECTION



Plant

Page 1 from 2

Material number: 1341.002.089

Plant: 068.93.95-1

CLUTCH RELEASE DEVICE



16 S 1820 TO /
CLUTCH RELEASE DEVICE

