



# Spare Parts Catalog

4 WG 210

Material number: 4657.054.052

Current date: 22.10.2018

ZF Friedrichshafen AG  
Hauptverwaltung  
80038 Friedrichshafen  
Deutschland

Telefon: +49 7541 77-0

Telefax: +49 7541 77-908000

[www.zf.com](http://www.zf.com)

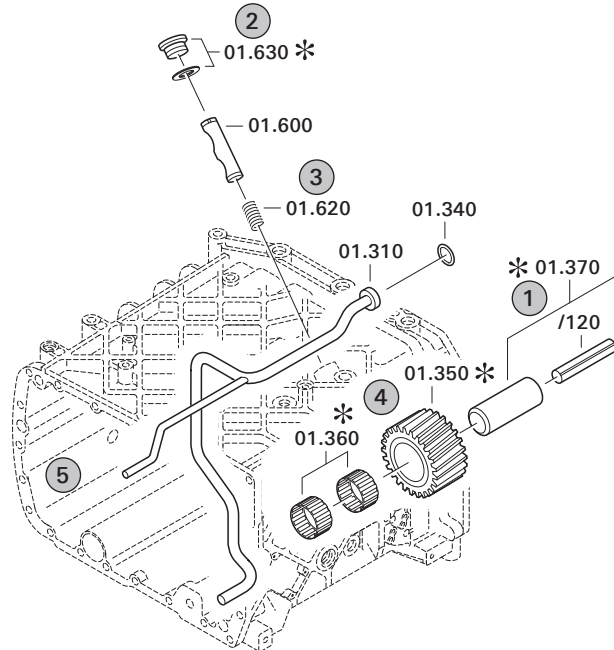
zuständiges Werk:  
Passau

# Notes relating to the spare parts catalog

## Setup of the spare parts catalog

- Cover sheet
- Technical Cover (only in SDM print)
- Overview of figures
- Figure
- Associated parts list
- Next figure
- Associated parts list
- ...

## Figure and parts list



## Overview of figures

Bildtafel Figure	Sachnummer Product number	Benennung (Description)	Technische Info Technical info	Description (Benennung)	Menge Quantity	Einheit Unit
068.08.17	1316.170.001	AUSLEGER	WL	SHIFT TURRET	1	Stk
068.08.06	1316.170.031	DECKEL	WL*H-H*VM	COVER	1	Stk
068.08.14	1316.170.808	DECKEL	WL*AUSL+GEH*H-H*HF160N	COVER	1	Stk
08	1316.170.441	ANSCHLUSSTEILE	WL*NG-VORB*RG-SCHL*168N*BAJONETT	CONNECTING PARTS	1	Stk

The "gap" indicates that there is no separate graphics panel (poster) for this assembly  
The parts of this assembly are shown with the same mid-section number on the figure

### 1 Positions and subpositions

Pos.	Sachnummer Product number	Benennung (Description)	Technische Info Technical info	Description (Benennung)	Menge Quantity	Einheit Unit
0370	1315.201.054	RUECKLAUFBOLZEN	KPL.16S151*SG*L= 79	REV.IDLER SHAFT	1	Stk
/0120	0631.329.293	SPANNSTIFT		SLOT. PIN	1	Stk

Positions marked with "/" are the individual items of a completion  
For example: Position 0370 contains a centering pin with the position /0120

### 2 Combinations with standardized parts

Pos.	Sachnummer Product number	Benennung (Description)	Technische Info Technical info	Description (Benennung)	Menge Quantity	Einheit Unit
0630		VERSCHL.SCHR.		SCREW PLUG	1	Stk
	0636.302.067	VERSCHL.SCHR.		SCREW PLUG	1	Stk
	0634.801.249	DICHTRING	A 26 X 31	SEALING RING	1	Stk

The parts list shows the components included in the combination of standardized parts

### 3 Depiction of position/item number on the figure and in the parts list

01.620 - on the figure 01 relates to the assembly in which the position is included. Due to program-related reasons, it is shown on the figure.

0620 - in the parts list

Pos.	Sachnummer Product number	Benennung (Description)	Technische Info Technical info	Description (Benennung)	Menge Quantity	Einheit Unit
0620	0732.040.736	DRUCKFEDER		COMPRESSION SPRING	1	Stk

### 4 \*-Positions

Positions marked with an \* are optional i.e. inclusion in the parts list is not mandatory.  
The following note is shown on the figure

je nach Stücklistenausführung  
depending on spec. number  
\*  
suivant la nomenclature  
secondo la distinta base

### 5 Parts, dotted display

Parts with dotted display on the figure are only used for orientation of other parts



Pos.	Information	Amendment number
	CUSTOMER: CHELPROM ***	
	CUSTOMER NO.: 60464	
	ZFP-PROJECT-NO.: 50360	
	PERFORMANCE CALC.: 4657 706 589	
	ARTICLE: 321 RADLADER	
	VEHICLE APPLICATION: LADER B160	
	WEIGHT EMPTY (TO): 18.00	
	ENGINE: CUMMINS 6CT8.3-215	
	ENGINE POWER(KW): 160	
	SPEED (RPM): 2200	
	INPUT TORQUE(NM): 870	
	SPEED (RPM): 1500	
	TIRES: 23,5 X 25	
	TIRE RADIUS (M): 0,740	
	AXLE RATIO: 21,330	
	MAX. SPEED (KM/H): 39	
	V-MAX. 1. GEAR (KM/H): 7	
	MAX. DRAW. PULL: 162439	
	CONV.OUTP.STALL(RPM): 2217	
	PERFORMANCE CALC.: NO	
	VERSION SPECIAL EXECUTION	
	ZFP WG SONDER DARST NEIN	
	TRANSMISSION TYPE 4 WG 210	
	RATIOS FORWARD 1.GEAR: 4,152	
	RATIOS FORWARD 2. GEAR: 2,089	
	3. GEAR FORWARD: 1,072	
	4. GEAR FORWARD: 0,636	
	1. GEAR REVERSE: 3,937	
	2. GEAR REVERSE: 1,981	
	3. GEAR REVERSE: 1,017	
	NUMBER OF PULSES ENGIN: 4	
	NUMBER OF PULSES TURB: 54	
	NUMBER OF PULSES MRK: 55	



Pos.	Information	Amendment number
	NUMBER OF PULSES OUTP.: 49	
	CONVERTER: W 340	
	CONVERTER BASIS NR. 4168 034 058 / 21.003.07	
	LOCK-UP CLUTCH: WITHOUT	
	START. TORQUE RATIO: 3,06	
	STATOR (CONVERTER): WITHOUT	
	RETARDER: WITHOUT	
	INPUT: FLANGE MOUNTED	
	INPUT FLANGE: DIN	
	INPUT FLANGE-TYPE: D= 150	
	SCREW FOR INPUT 8 M12 35	
	OUTPUT: STANDARD	
	OUTPUT LEFT: WITHOUT AXLE DISCONNECT	
	OUTPUT FLANGE: DIN	
	OUTPUT FLANGE-TYPE: DIN 180 8 X 14,1	
	SCREW: 8 M14 15 45	
	OUTPUT RIGHT: PARKING BRAKE WITH	
	DISC BRAKE: MECHANICAL M90	
	LEVER LENGHT/STRENGHT 101,6 MM/2200N	
	OUTPUT FLANGE: DIN	
	OUTPUT FLANGE-TYPE: DIN 180	
	SCREW: 8 M14 15 45	
	POWER TAKE OFF: 1 PTO COAXIAL ENGINE-DEPENDENT	
	DISCONNECTION: WITHOUT	
	FLANGE: SAE C 2/4 HOLE	
	SHAFT: SAE C 12/24 DP 14 T	
	GEAR CHANGE CONTROL: HSG 94	
	VOLTAGE: 24 VOLT	
	OPERATING PRESSURE: 16+2 BAR	
	CABLE PACKAGE: BAJONETT	
	ELEKTRIK PARTS DELIVERY WITH GEARBOX	
	GROUP SEPARATE SUPPLY: 4657.183.070	
	CONTROL SYSTEM EST-37A	



Pos.	Information	Amendment number
	VEHICLE SUPPLY VOLTAGE: 24 VOLT	
	GEAR SELECTOR: DW 3	
	DISPLAY: FITTED ASSEMBLY	
	WIRING: WITH	
	TEMP.WARNING INDICATOR: WITH (PRESSURE GAUGE/CUSTOMER)	
	SPEED CONTROL: ELECT EST 37	
	MOUNTING OIL LEV. TUBE: INPUT	
	OIL DIPSTICK: A1/SHORT/STRAIGHT	
	DELIVERY OIL LEV. TUBE: ASSEMBLED	
	ZF-FILTER: DIRECT MOUNTING	
	ADDITIONAL FILTER WITHOUT	
	DIFFERENTIAL PRESSURE S WITH (CLOSING SWITCH)	
	EMERGENCY STEERING PUMP WITHOUT	
	GEAR VENT: STANDARD	
	SECTION DRAWING: 4657500012	
	INSTALL ALTERNATIVES: CUSTOMER SPECIFY	
	INSTALL.DRAWING: 4657 654 052	
	GEARBOX DIAGRAM: 4657700045	
	OIL CIRCUIT DIAGRAMM: 4657 700 040	
	ASSEMBLY-GUIDELINE: 4657 700 079	
	DRAWING 6009 665 002	
	DRAWING GEAR SEL. 1: 6006 630 033	
	CONNECTION DIAGRAMM: 6006 700 564	
	DRAWING GEAR SEL. 2: WITHOUT	
	WIRING DIAGRAMM: 6029 701 444	
	CONNECTION DIAGRAMM: 6029 701 445	
	DRAWING DISPLAY: 6007 603 047	
	OIL CAPACITY: 27	
	GEARBOX OIL CAPACITY: WITHOUT	
	OIL-CLASS: TE ML 03	
	WEIGHT TOTAL: 514 KG	
	PRIME CODE: RAL-3009	
	WANDLER: 4646 708 322	

# Assembly group overview

Page 1 from 2

Material number: 4657.054.052



4 WG 210 /

Graphics	Pos.	Material number	Name	Quantity	Amend. no.	Techn. Info.
465713004500	270	4657.130.045	ENGINE CONNECTION	1		
465713040600	280	4657.130.406	ENGINE CONNECTION	1		
416603411300	500	4166.034.113	CONVERTER	1		
465710201400	30	4657.102.014	INPUT	1		
465710103101	10	4657.101.031	TRANSMISSION HOUSING	1		
465710140800	20	4657.101.408	TRANSMISSION HOUSING	1		
465717103200	350	4657.171.032	COUPLING	1		
465717202800	360	4657.172.028	COUPLING	1		
465717301700	370	4657.173.017	COUPLING	1		
465717404300	380	4657.174.043	COUPLING	1		
465717501400	390	4657.175.014	COUPLING	1		
465717601700	400	4657.176.017	COUPLING	1		
465710300600	50	4657.103.006	OUTPUT	1		
465710342900	60	4657.103.429	OUTPUT	1		
465610900300	170	4656.109.003	PARKING BRAKE	1		
465710940900	70	4657.109.409	PARKING BRAKE	1		

# Assembly group overview

Page 2 from 2

Material number: 4657.054.052



4 WG 210 /

Graphics	Pos.	Material number	Name	Quantity	Amend. no.	Techn. Info.
465715400400	340	4657.154.004	POWER TAKE-OFF	1		
465710601200	110	4657.106.012	SHIFT SYSTEM	1		
465710640720	115	4657.106.407	SHIFT SYSTEM	1		
465615901921	120	4656.159.019	SHIFT SYSTEM	1		
465712300600	225	4657.123.006	CONTROL UNIT	1		
465712000300	190	4657.120.003	PRESSURE REGULATOR	1		
465712200500	220	4657.122.005	PRESSURE OIL PUMP	1		
465613700400	310	4656.137.004	EMERGENCY STEERING PUMP	1		
465712500700	250	4657.125.007	INDUCTIVE SENSOR	1		
465712400300	240	4657.124.003	TEMPERATURE SENSOR	1		
465613800600	330	4656.138.006	FILTER	1		
465713100400	290	4657.131.004	FILLER NOZZLE	1		
465718307000	495	4657.183.070	LOOSE PARTS	1		
465729800700	KIT	4657.298.007	SEAL KIT	1		

# Plant

Page 1 from 1

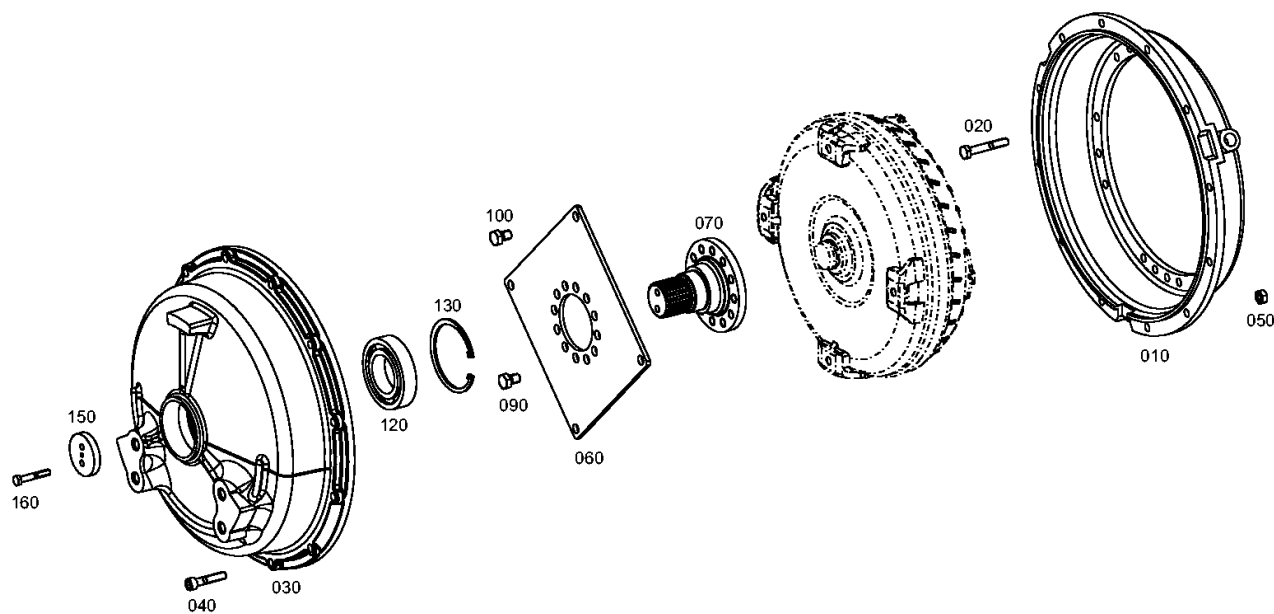
Material number: 4657.054.052

Plant: 465713004500

Material-assembly-group-no: 4657.130.045



4 WG 210 /  
ENGINE CONNECTION





# Plant

Page 1 from 1

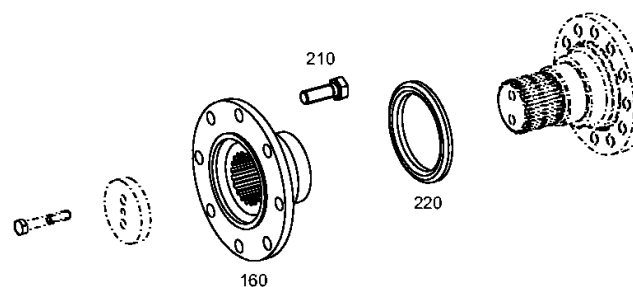
Material number: 4657.054.052

Plant: 465713040600

Material-assembly-group-no: 4657.130.406



4 WG 210 /  
ENGINE CONNECTION



# Plant

Page 1 from 1

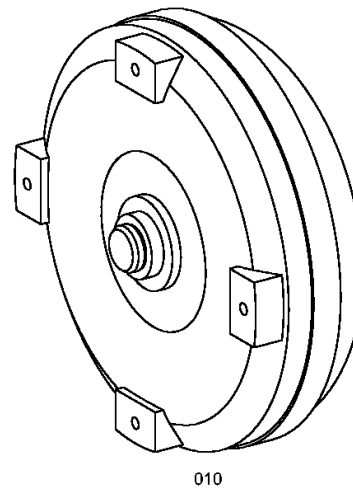
Material number: 4657.054.052

Plant: 416603411300

Material-assembly-group-no: 4166.034.113



4 WG 210 /  
CONVERTER



010

# Plant

Page 1 from 1

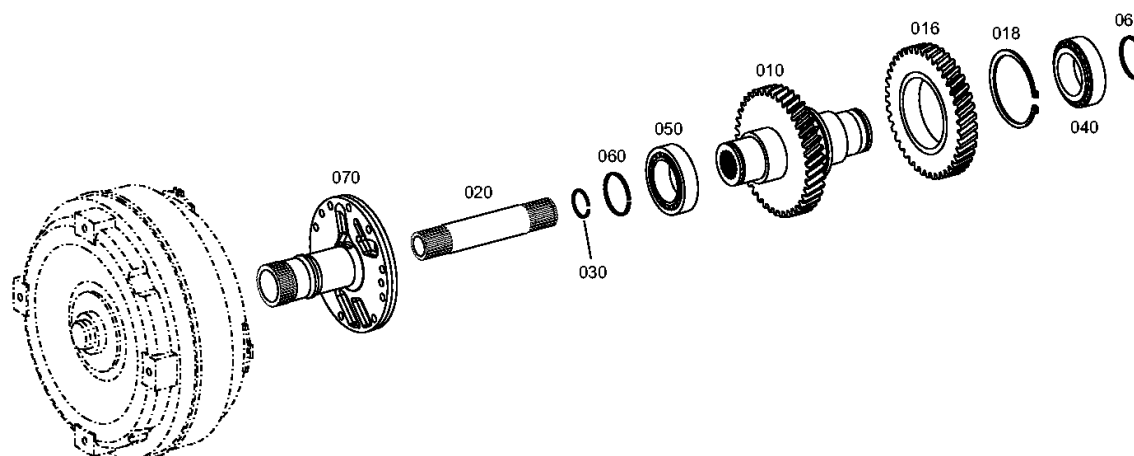
Material number: 4657.054.052

Plant: 465710201400

Material-assembly-group-no: 4657.102.014



4 WG 210 /  
INPUT



# Plant

Page 1 from 2

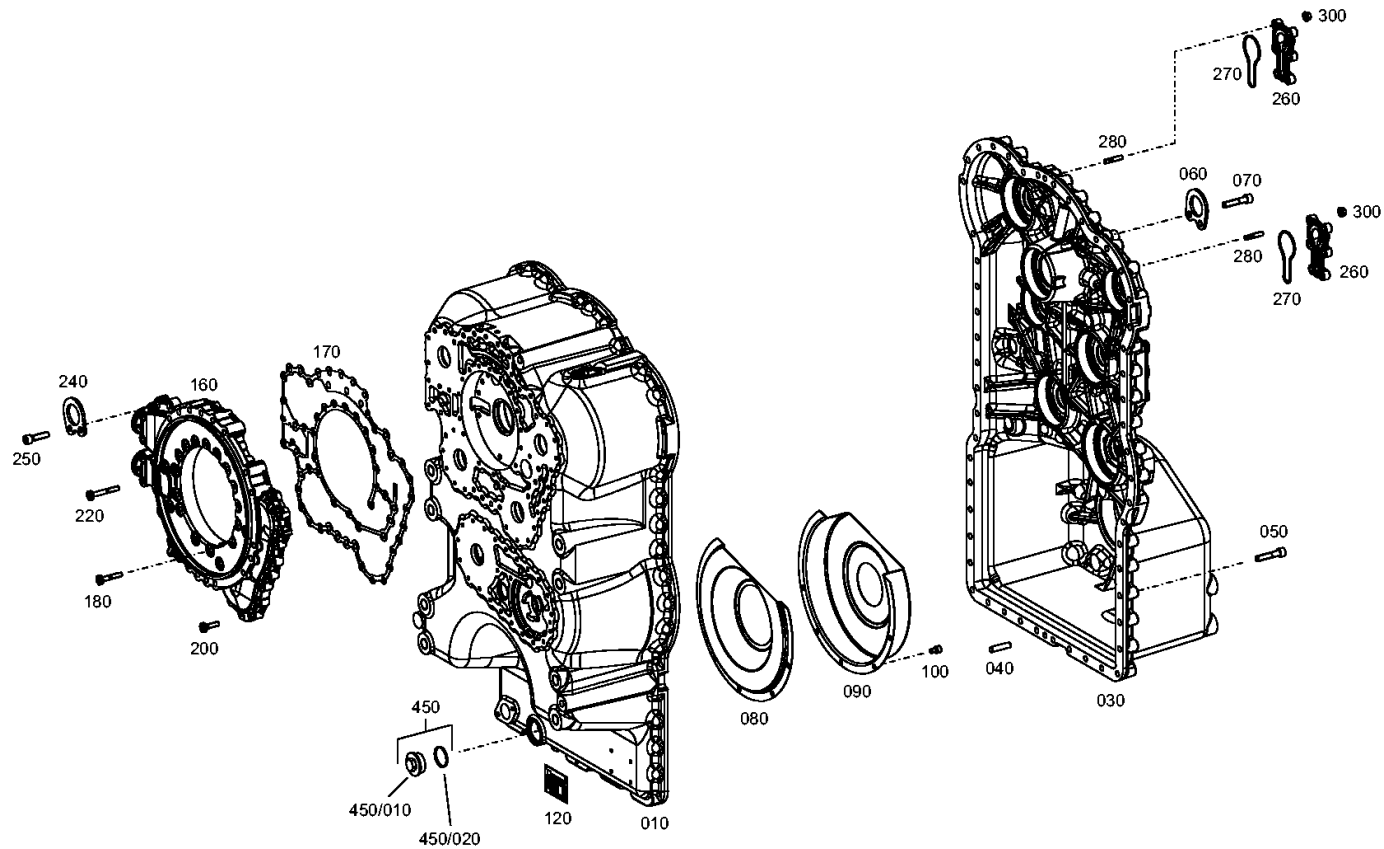
Material number: 4657.054.052

Plant: 465710103101

Material-assembly-group-no: 4657.101.031



4 WG 210 /  
TRANSMISSION HOUSING



# Plant

Page 2 from 2

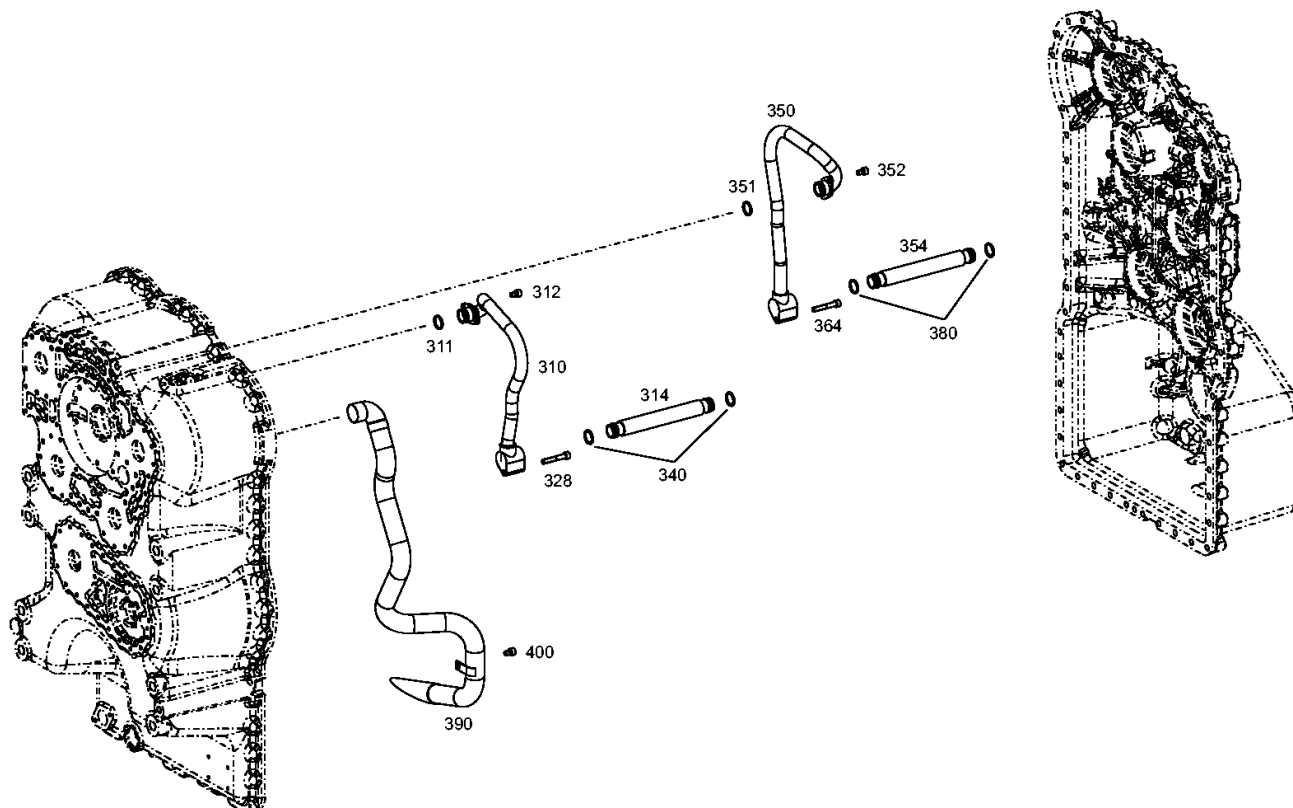
Material number: 4657.054.052

Plant: 465710103102

Material-assembly-group-no: 4657.101.031



4 WG 210 /  
TRANSMISSION HOUSING



# Plant

Page 1 from 1

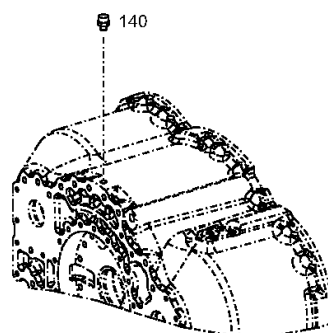
Material number: 4657.054.052

Plant: 465710140800

Material-assembly-group-no: 4657.101.408



4 WG 210 /  
TRANSMISSION HOUSING



# Plant

Page 1 from 1

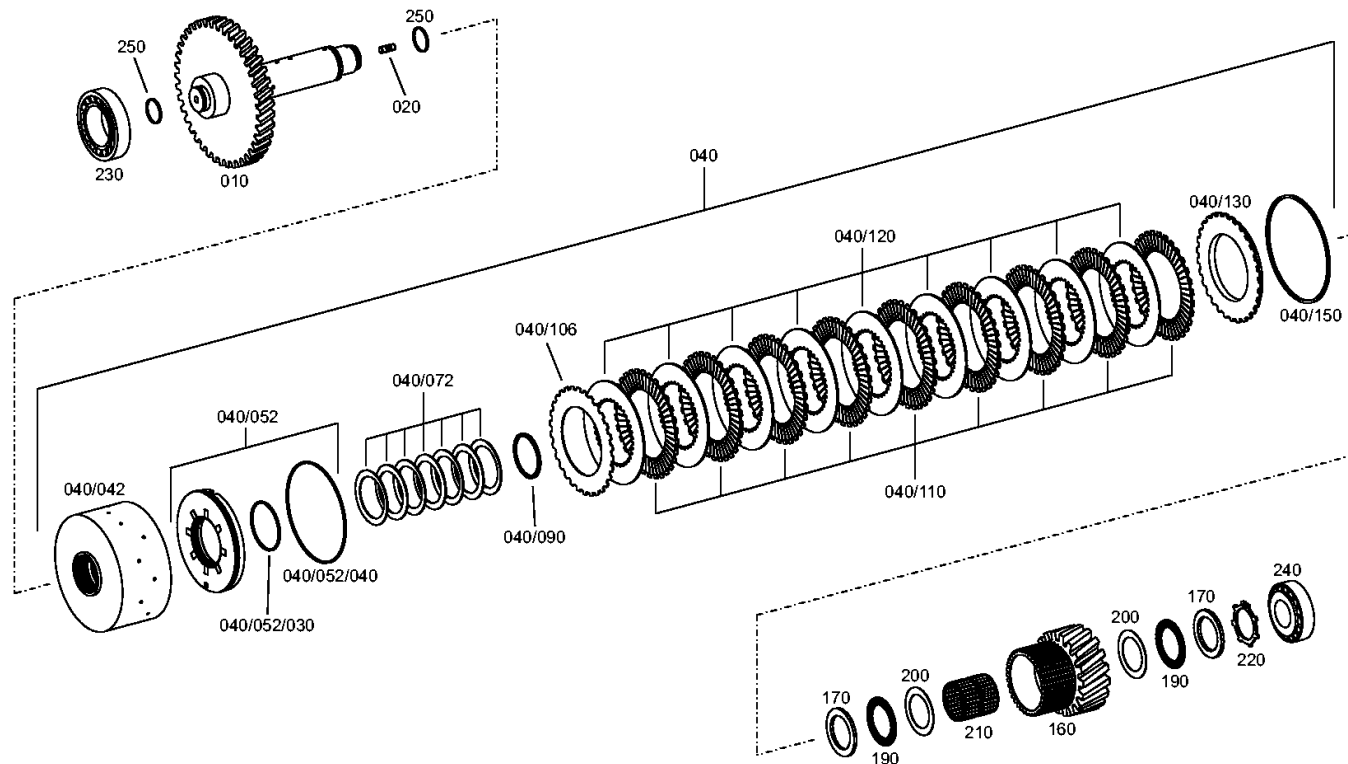
Material number: 4657.054.052

Plant: 465717103200

Material-assembly-group-no: 4657.171.032



4 WG 210 /  
COUPLING



# Plant

Page 1 from 1

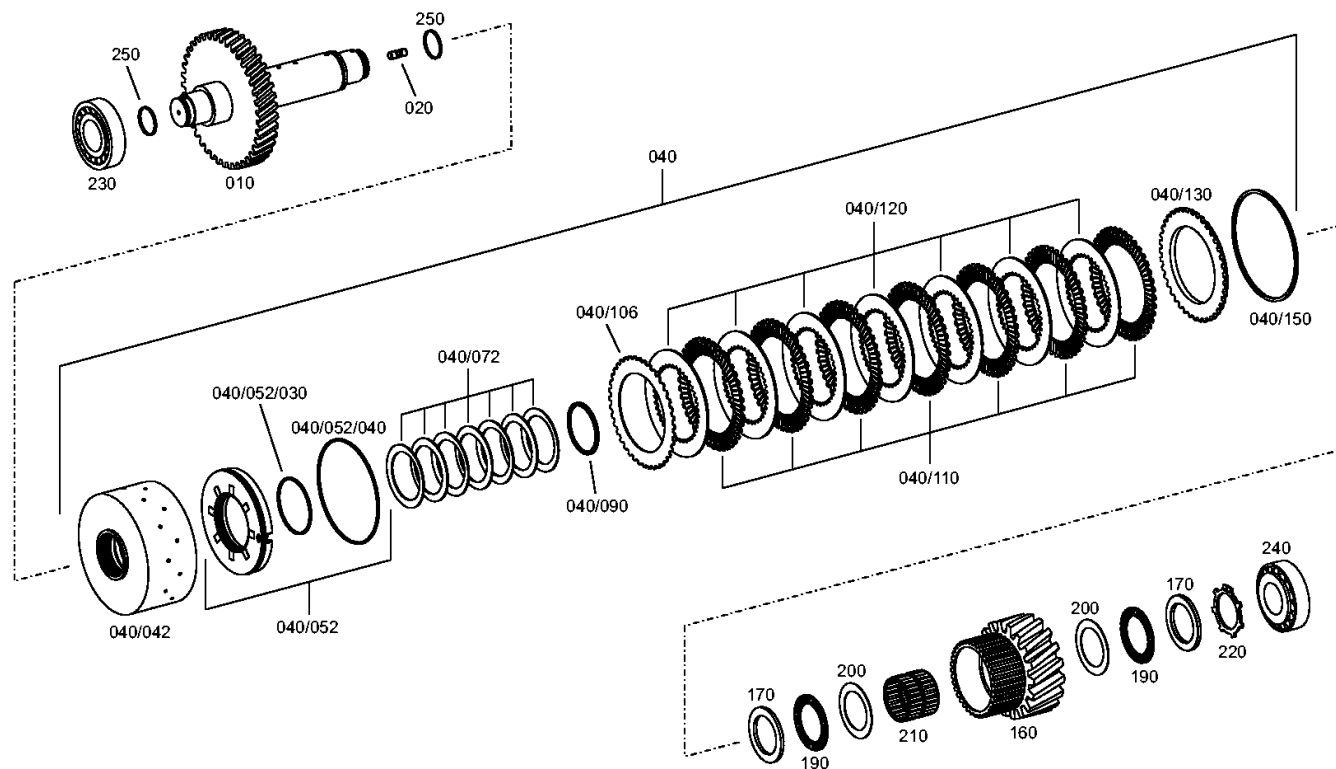
Material number: 4657.054.052

Plant: 465717202800

Material-assembly-group-no: 4657.172.028



4 WG 210 /  
COUPLING





# Plant

Page 1 from 1

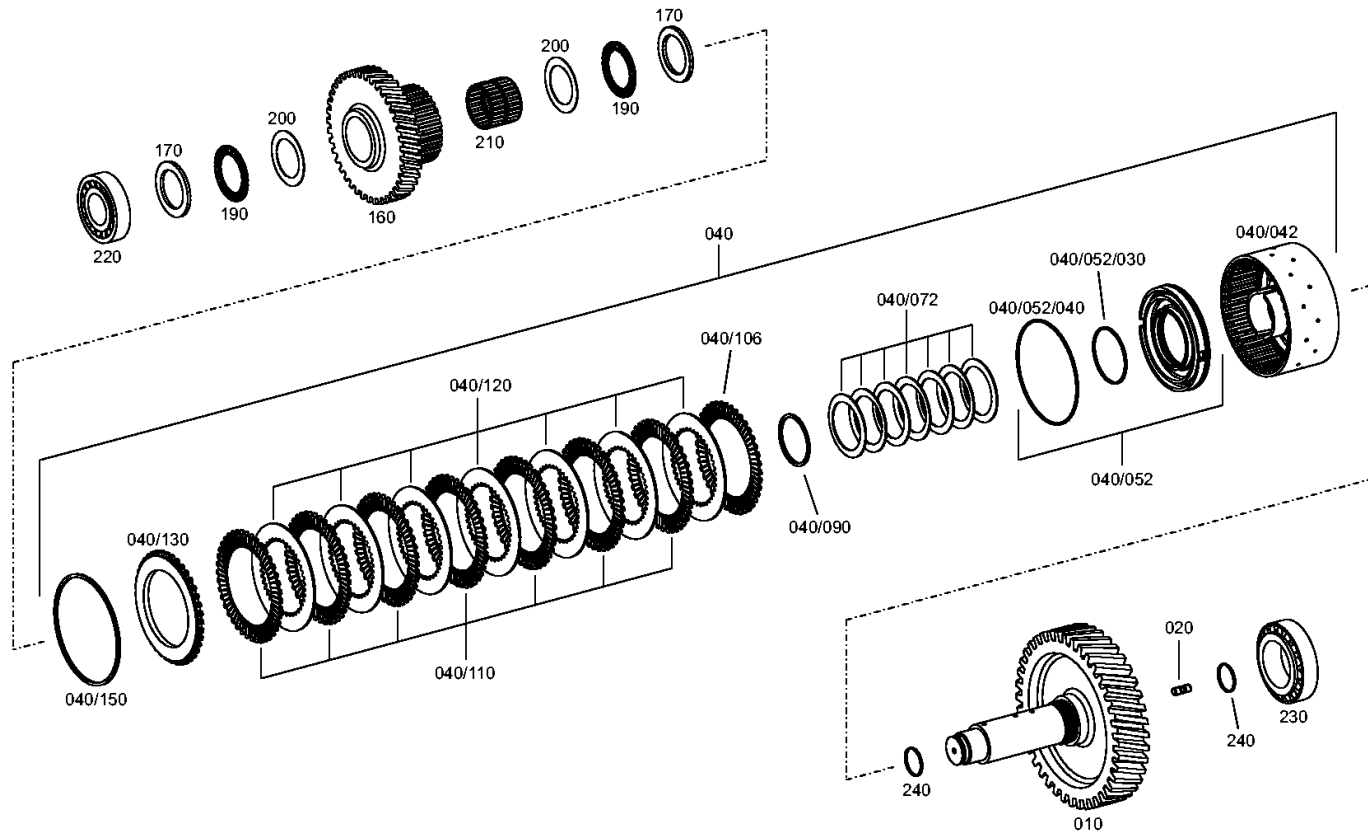
Material number: 4657.054.052

Plant: 465717301700

Material-assembly-group-no: 4657.173.017



4 WG 210 /  
COUPLING

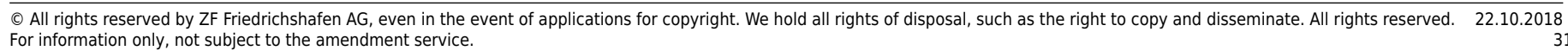


## Page 1 from 1

Plant: 465717404300



4 WG 210 /  
COUPLING



# Plant

Page 1 from 1

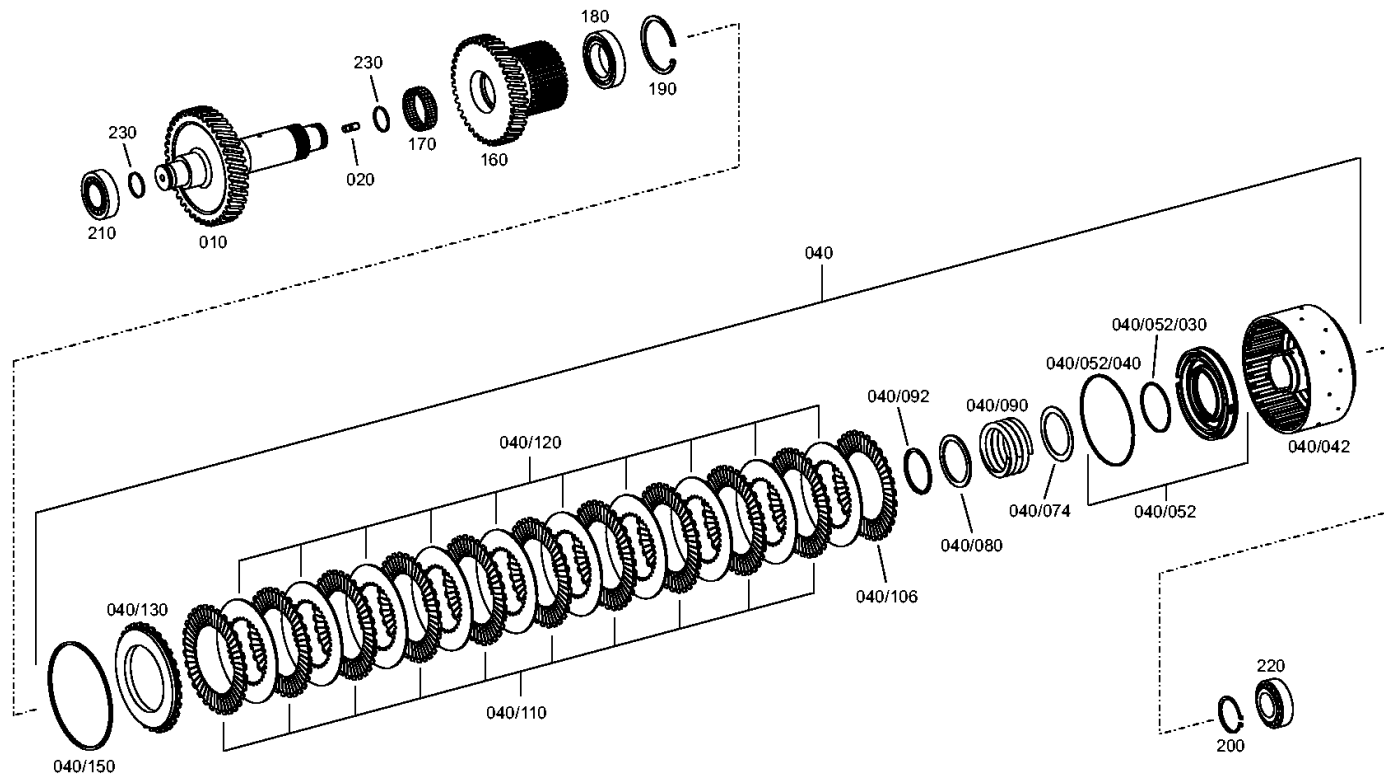
Material number: 4657.054.052

Plant: 465717501400

Material-assembly-group-no: 4657.175.014



4 WG 210 /  
COUPLING



# Plant

Page 1 from 1

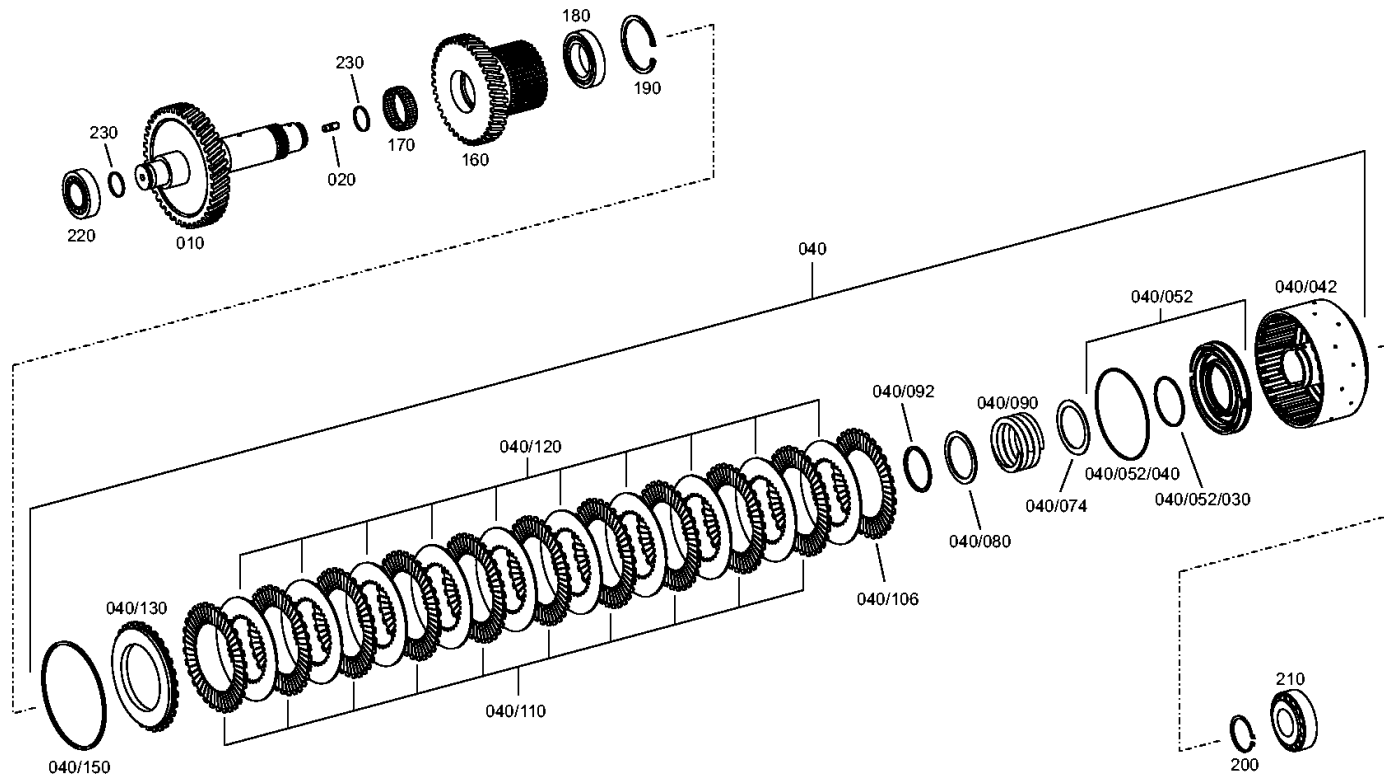
Material number: 4657.054.052

Plant: 465717601700

Material-assembly-group-no: 4657.176.017



4 WG 210 /  
COUPLING



# Plant

Page 1 from 1

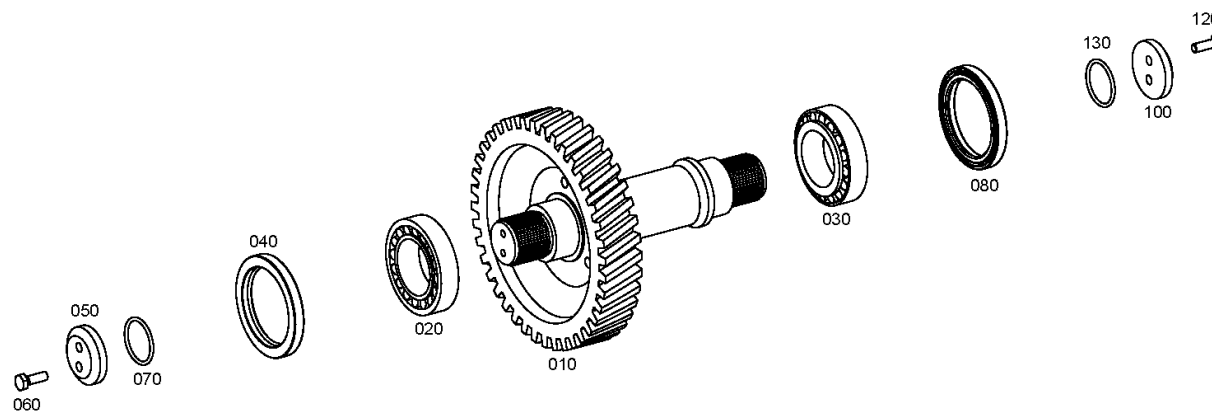
Material number: 4657.054.052

Plant: 465710300600

Material-assembly-group-no: 4657.103.006



4 WG 210 /  
OUTPUT



# Plant

Page 1 from 1

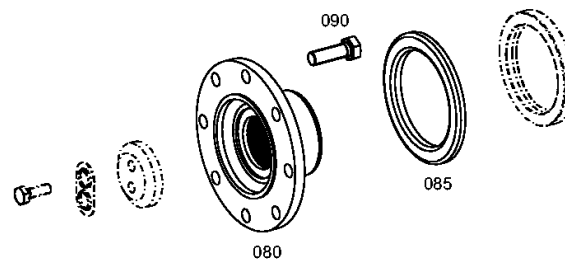
Material number: 4657.054.052

Plant: 465710342900

Material-assembly-group-no: 4657.103.429



4 WG 210 /  
OUTPUT



# Plant

Page 1 from 1

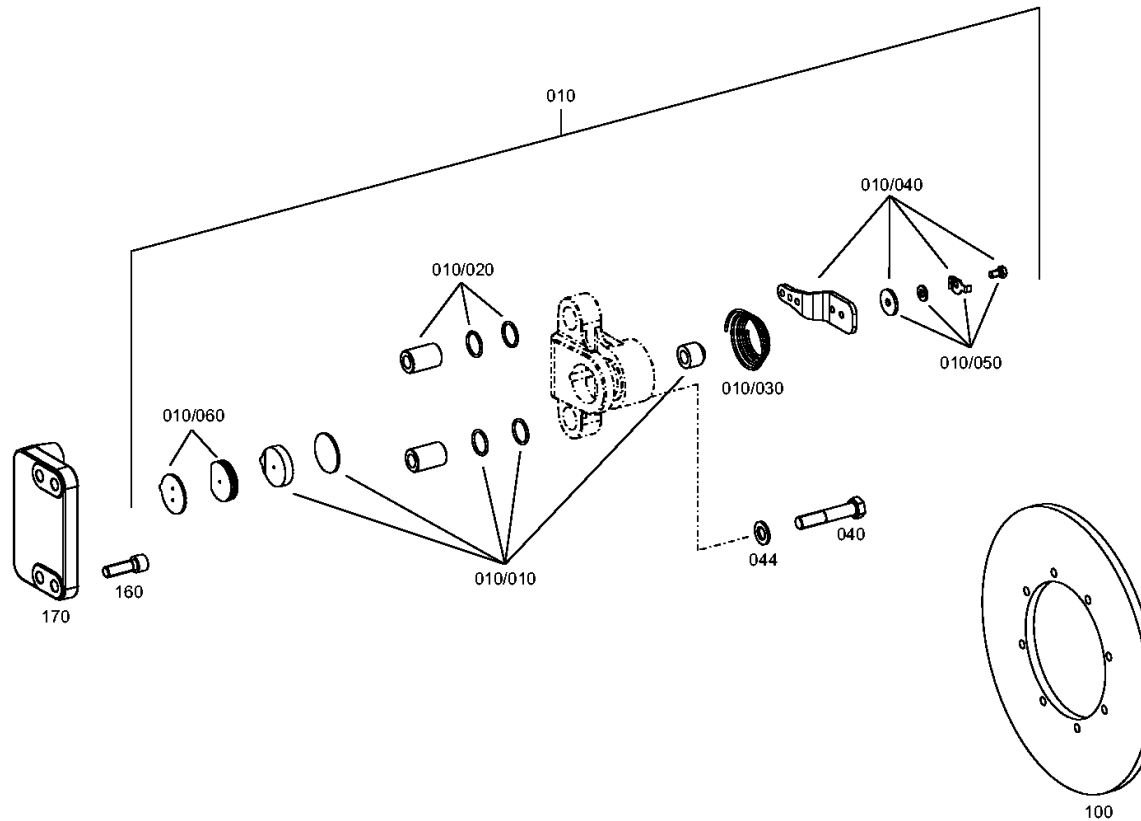
Material number: 4657.054.052

Plant: 465610900300

Material-assembly-group-no: 4656.109.003



4 WG 210 /  
PARKING BRAKE



# Plant

Page 1 from 1

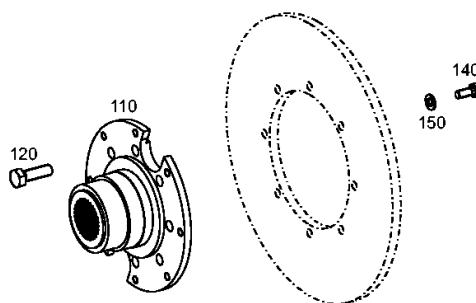
Material number: 4657.054.052

Plant: 465710940900

Material-assembly-group-no: 4657.109.409



4 WG 210 /  
PARKING BRAKE





# Plant

Page 1 from 1

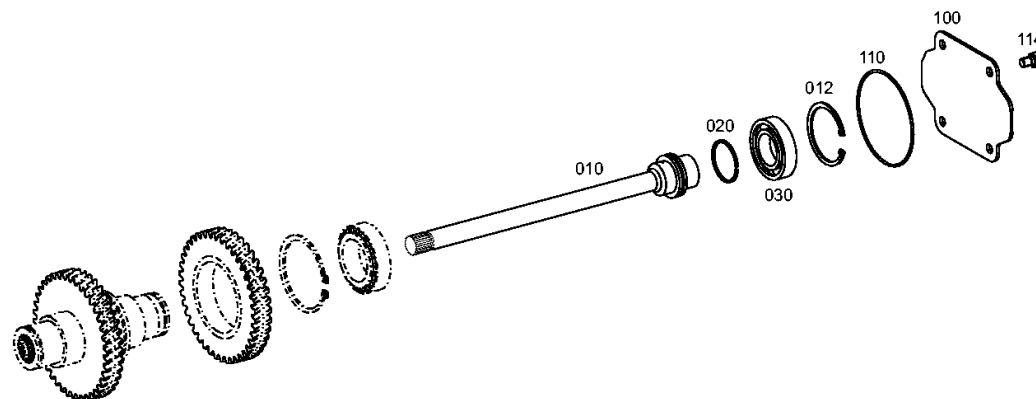
Material number: 4657.054.052

Plant: 465715400400

Material-assembly-group-no: 4657.154.004



4 WG 210 /  
POWER TAKE-OFF



# Plant

Page 1 from 1

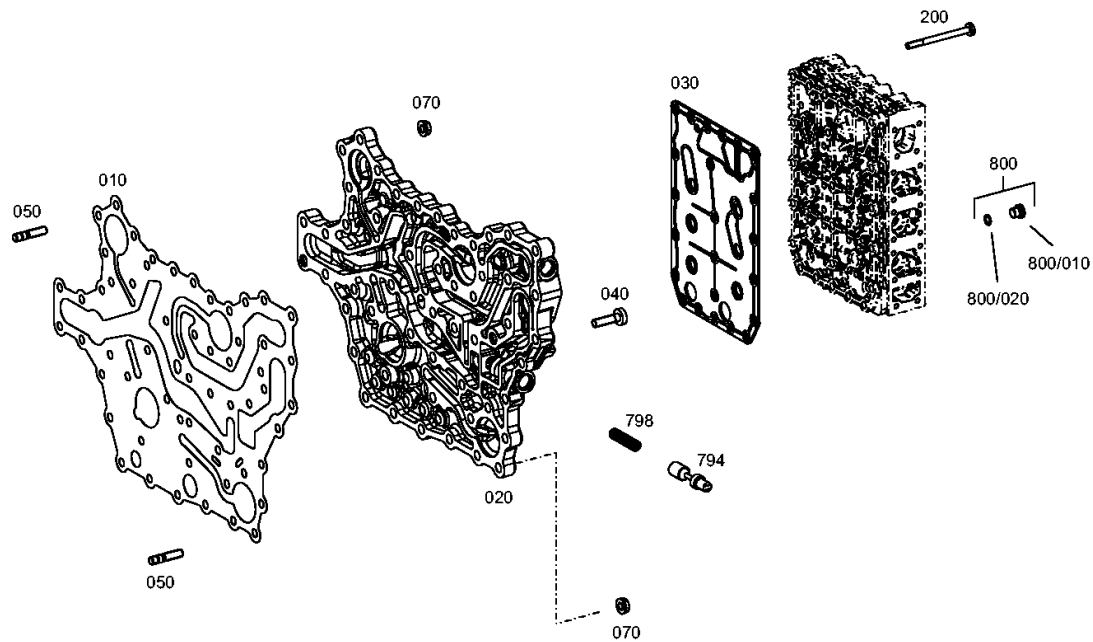
Material number: 4657.054.052

Plant: 465710601200

Material-assembly-group-no: 4657.106.012



4 WG 210 /  
SHIFT SYSTEM



# Plant

Page 1 from 1

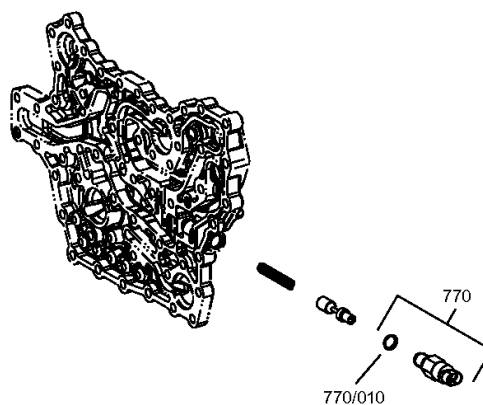
Material number: 4657.054.052

Plant: 465710640720

Material-assembly-group-no: 4657.106.407



4 WG 210 /  
SHIFT SYSTEM



# Plant

Page 1 from 2

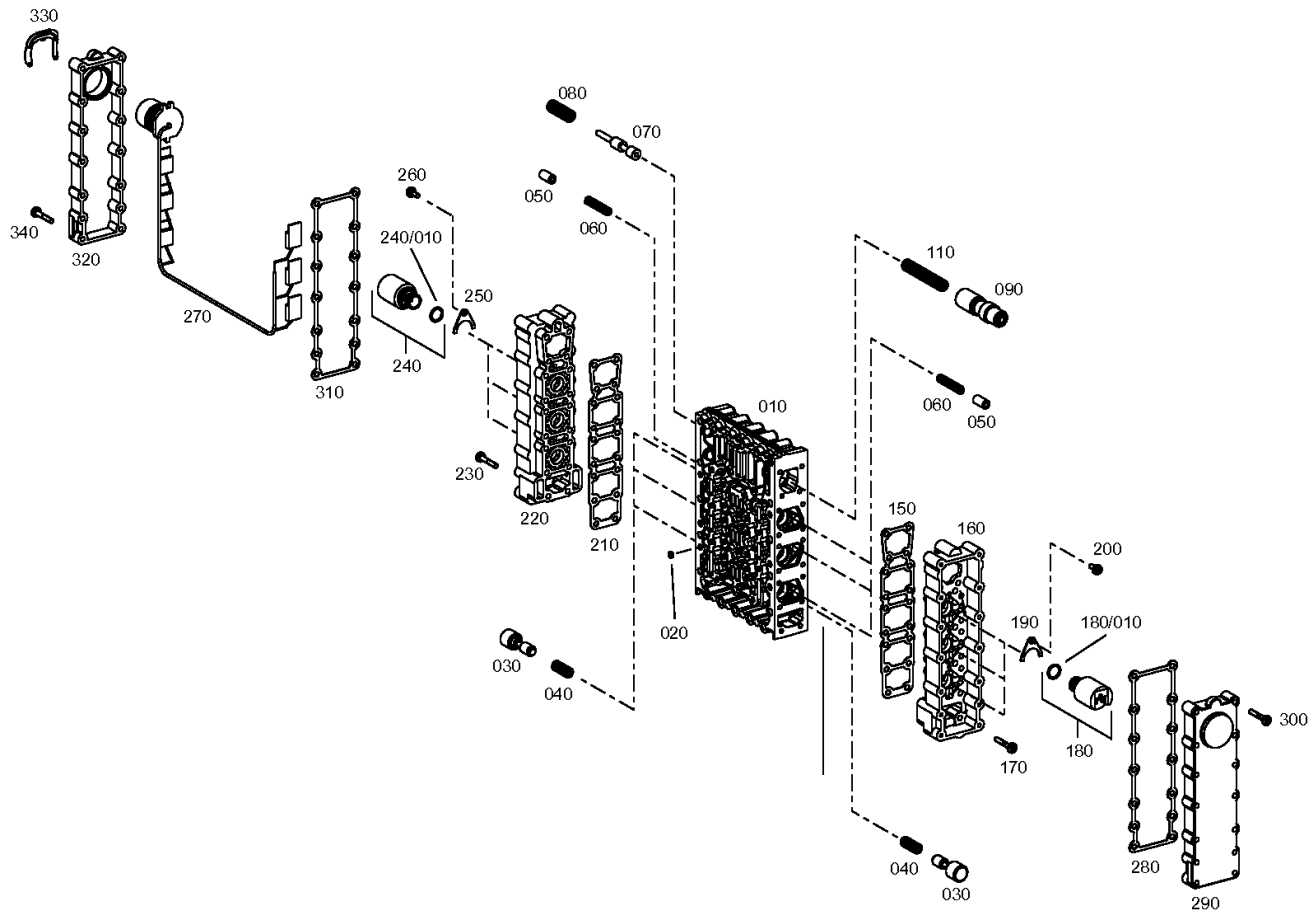
Material number: 4657.054.052

Plant: 465615901921

Material-assembly-group-no: 4656.159.019



4 WG 210 /  
SHIFT SYSTEM



# Plant

Page 2 from 2

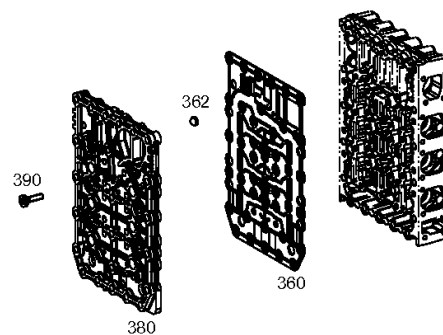
Material number: 4657.054.052

Plant: 465615901922

Material-assembly-group-no: 4656.159.019



4 WG 210 /  
SHIFT SYSTEM



# Plant

Page 1 from 1

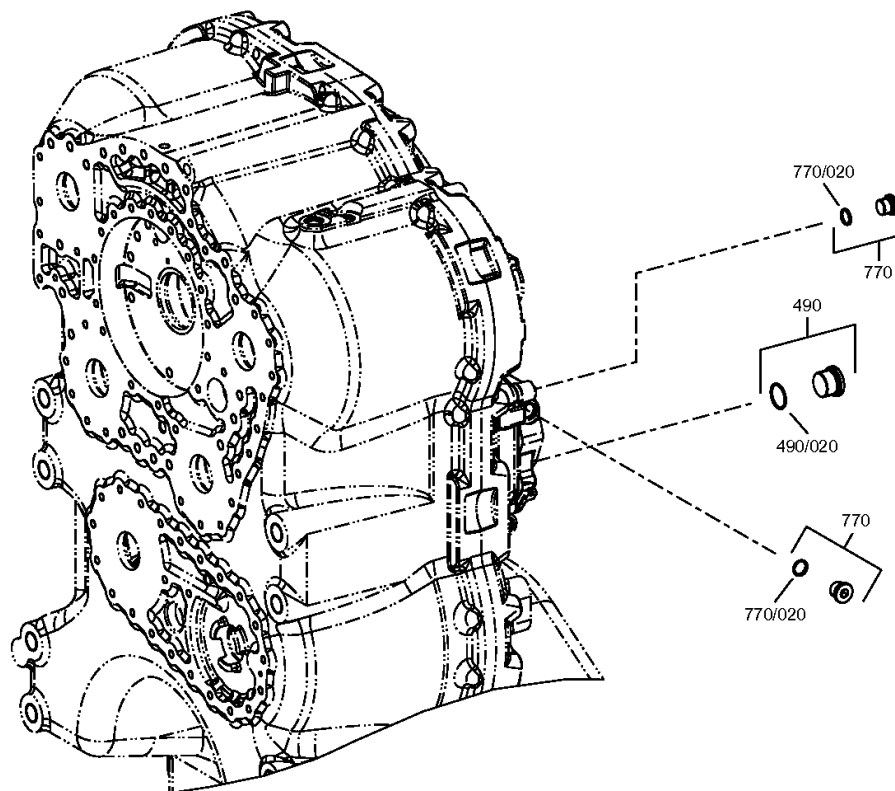
Material number: 4657.054.052

Plant: 465712300600

Material-assembly-group-no: 4657.123.006



4 WG 210 /  
CONTROL UNIT



# Plant

Page 1 from 1

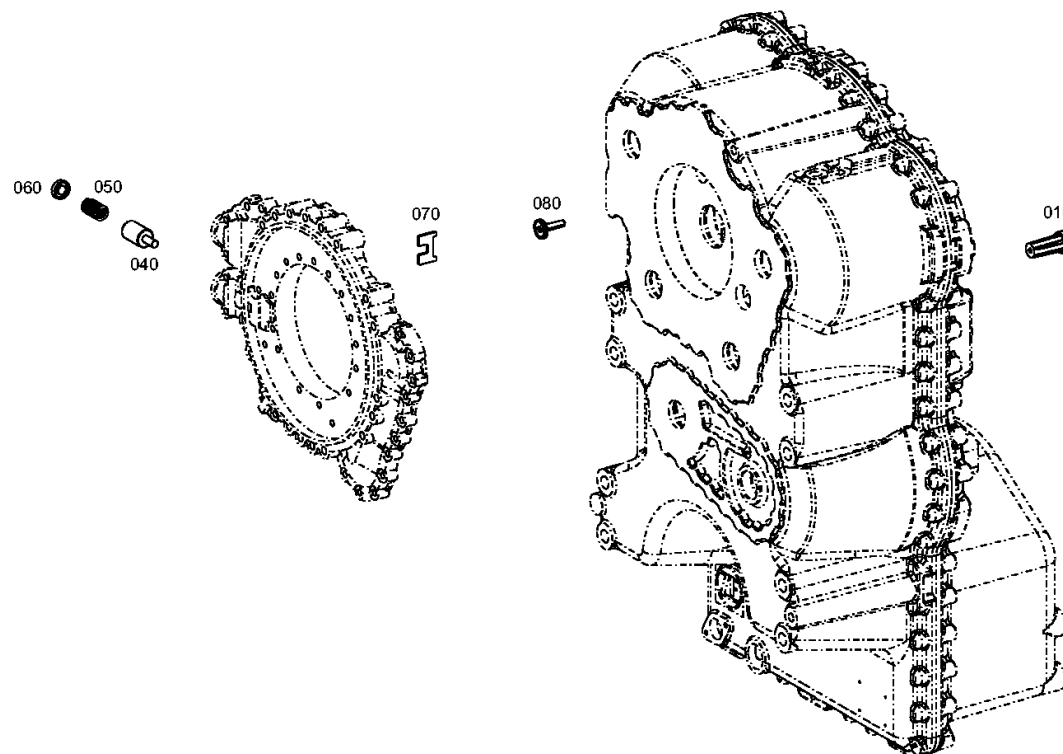
Material number: 4657.054.052

Plant: 465712000300

Material-assembly-group-no: 4657.120.003



4 WG 210 /  
PRESSURE REGULATOR



# Plant

Page 1 from 1

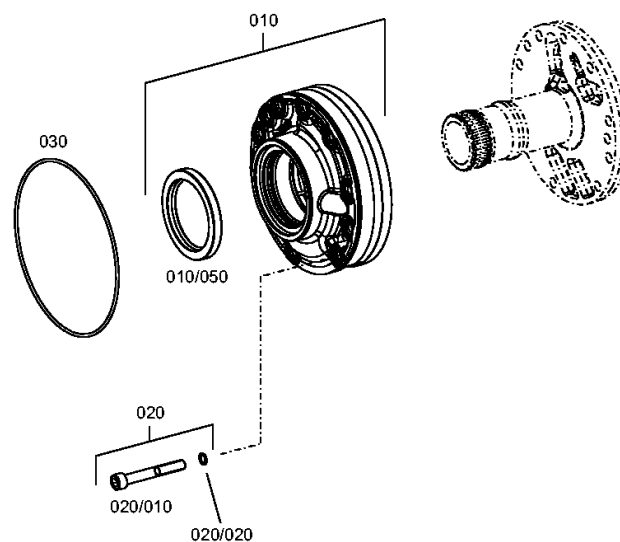
Material number: 4657.054.052

Plant: 465712200500

Material-assembly-group-no: 4657.122.005



4 WG 210 /  
PRESSURE OIL PUMP





# Plant

Page 1 from 1

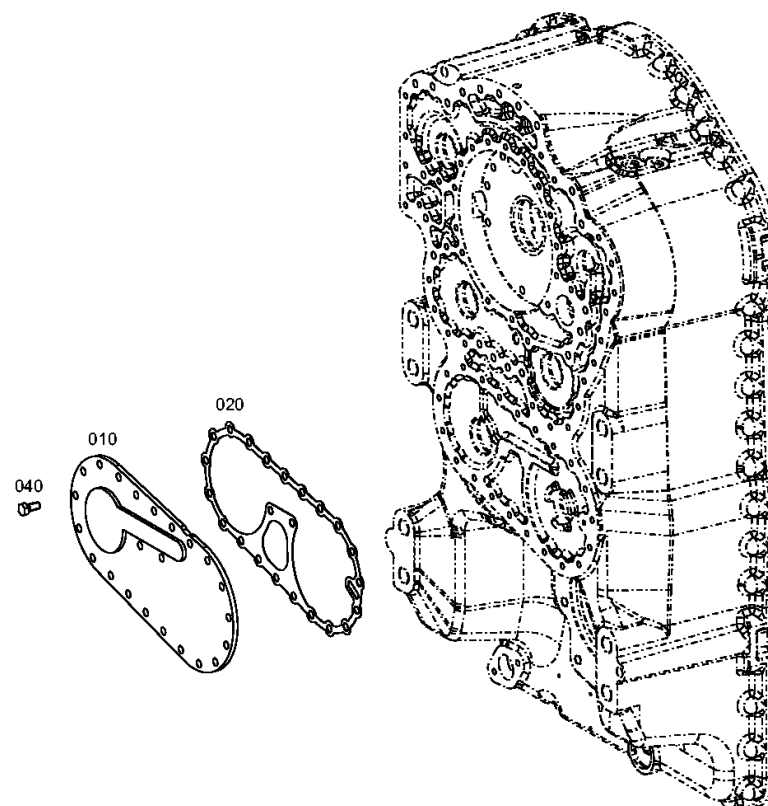
Material number: 4657.054.052

Plant: 465613700400

Material-assembly-group-no: 4656.137.004



4 WG 210 /  
EMERGENCY STEERING PUMP



# Plant

Page 1 from 1

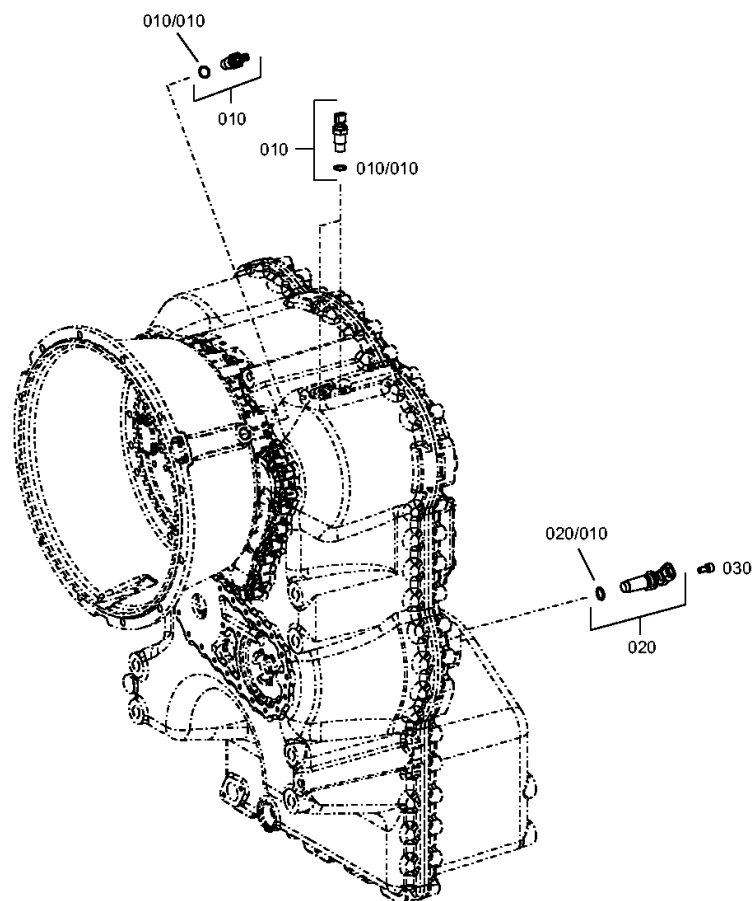
Material number: 4657.054.052

Plant: 465712500700

Material-assembly-group-no: 4657.125.007



4 WG 210 /  
INDUCTIVE SENSOR



# Plant

Page 1 from 1

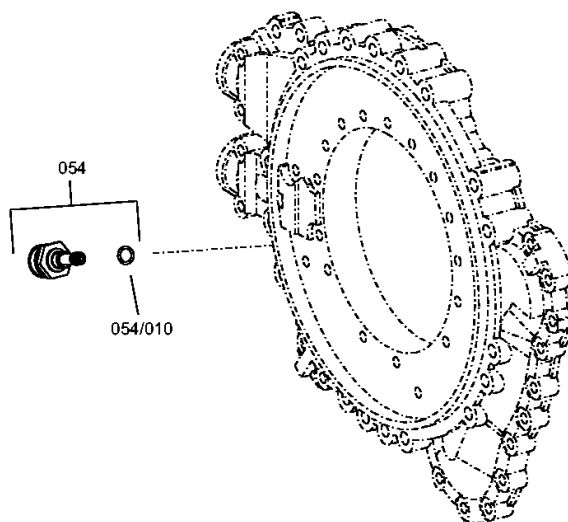
Material number: 4657.054.052

Plant: 465712400300

Material-assembly-group-no: 4657.124.003



4 WG 210 /  
TEMPERATURE SENSOR



# Plant

Page 1 from 1

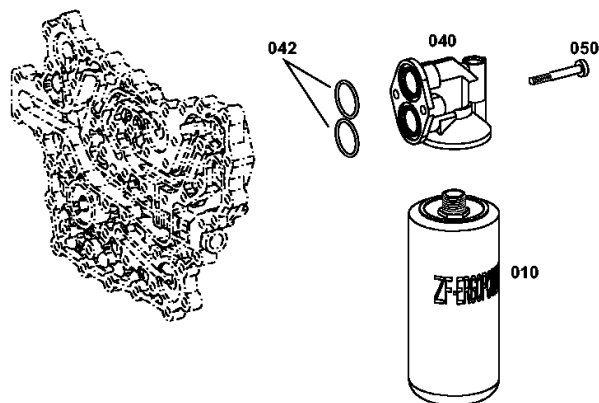
Material number: 4657.054.052

Plant: 465613800600

Material-assembly-group-no: 4656.138.006



4 WG 210 /  
FILTER



# Plant

Page 1 from 1

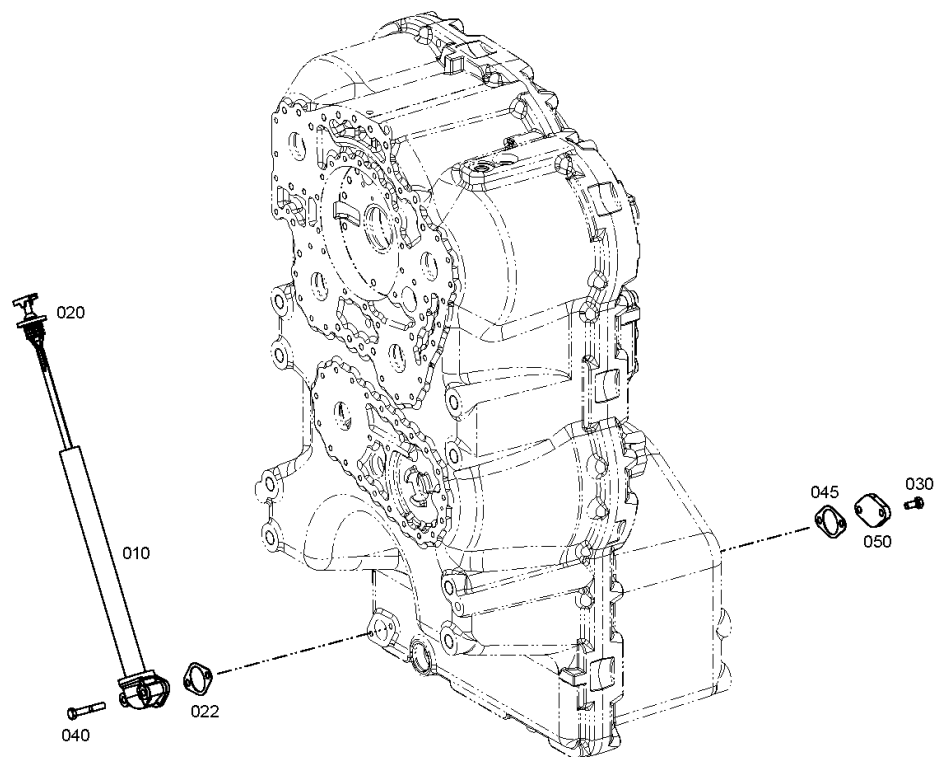
Material number: 4657.054.052

Plant: 465713100400

Material-assembly-group-no: 4657.131.004



4 WG 210 /  
FILLER NOZZLE



# Plant

Page 1 from 1

Material number: 4657.054.052

Plant: 465718307000

Material-assembly-group-no: 4657.183.070



4 WG 210 /  
LOOSE PARTS

