



Spare Parts Catalog

5 WG 98

Material number: 4660.003.030

Current date: 26.11.2018

ZF Friedrichshafen AG
Hauptverwaltung
80038 Friedrichshafen
Deutschland

Telefon: +49 7541 77-0

Telefax: +49 7541 77-908000

www.zf.com

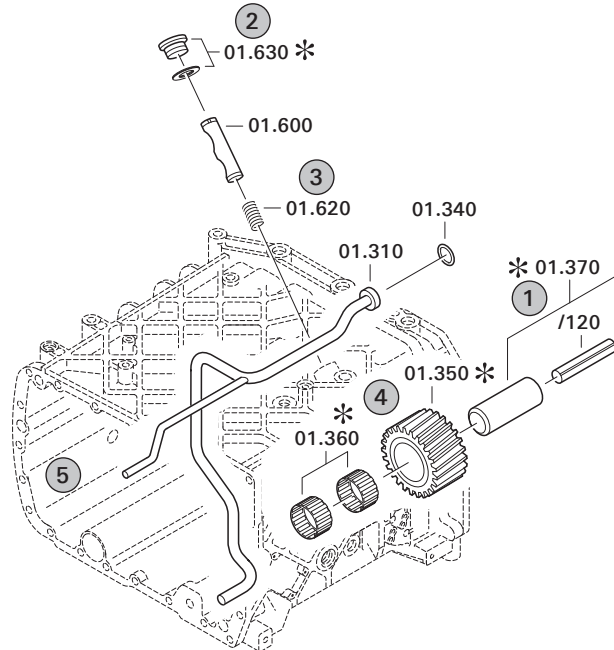
zuständiges Werk:
Passau

Notes relating to the spare parts catalog

Setup of the spare parts catalog

- Cover sheet
- Technical Cover (only in SDM print)
- Overview of figures
- Figure
- Associated parts list
- Next figure
- Associated parts list
- ...

Figure and parts list



Overview of figures

Bildtafel Figure	Sachnummer Product number	Benennung (Description)	Technische Info Technical info	Description (Benennung)	Menge Quantity	Einheit Unit
068.08.17	1316.170.001	AUSLEGER	WL	SHIFT TURRET	1	Stk
068.08.06	1316.170.031	DECKEL	WL*H-H*VM	COVER	1	Stk
068.08.14	1316.170.808	DECKEL	WL*AUSL+GEH*H-H*HF160N	COVER	1	Stk
08	1316.170.441	ANSCHLUSSTEILE	WL*NG-VORB*RG-SCHL*168N*BAJONETT	CONNECTING PARTS	1	Stk

The "gap" indicates that there is no separate graphics panel (poster) for this assembly
The parts of this assembly are shown with the same mid-section number on the figure

1 Positions and subpositions

Pos.	Sachnummer Product number	Benennung (Description)	Technische Info Technical info	Description (Benennung)	Menge Quantity	Einheit Unit
0370	1315.201.054	RUECKLAUFBOLZEN	KPL.16S151*SG*L= 79	REV.IDLER SHAFT	1	Stk
/0120	0631.329.293	SPANNSTIFT		SLOT. PIN	1	Stk

Positions marked with "/" are the individual items of a completion
For example: Position 0370 contains a centering pin with the position /0120

2 Combinations with standardized parts

Pos.	Sachnummer Product number	Benennung (Description)	Technische Info Technical info	Description (Benennung)	Menge Quantity	Einheit Unit
0630		VERSCHL.SCHR.		SCREW PLUG	1	Stk
	0636.302.067	VERSCHL.SCHR.		SCREW PLUG	1	Stk
	0634.801.249	DICHTRING	A 26 X 31	SEALING RING	1	Stk

The parts list shows the components included in the combination of standardized parts

3 Depiction of position/item number on the figure and in the parts list

01.620 - on the figure 01 relates to the assembly in which the position is included. Due to program-related reasons, it is shown on the figure.

0620 - in the parts list

Pos.	Sachnummer Product number	Benennung (Description)	Technische Info Technical info	Description (Benennung)	Menge Quantity	Einheit Unit
0620	0732.040.736	DRUCKFEDER		COMPRESSION SPRING	1	Stk

4 *-Positions

Positions marked with an * are optional i.e. inclusion in the parts list is not mandatory.
The following note is shown on the figure

je nach Stücklistenausführung
depending on spec. number
*
suivant la nomenclature
secondo la distinta base

5 Parts, dotted display

Parts with dotted display on the figure are only used for orientation of other parts



Pos.	Information	Amendment number
	CUSTOMER: HIDROMEK	
	1.PERFORMANCE CALC.: 4660 706 392	
	VEHICLE DESIGNATION: BACKHOE LOADER 102 B	
	WEIGHT EMPTY: 9,06 TO	
	ENGINE: J. DEERE 4045 HF 280-TRIER3	
	ENGINE POWER: 74,1 KW	
	SPEED: 2.000 U/MIN	
	INPUT TORQUE: 380 NM	
	SPEED: 1.700 U/MIN	
	TYRE RADIUS DYN.: 0,676 M	
	AXLE RATIO: 17,231	
	MAX. SPEED: 39,9 KM/H	
	2.PERFORMANCE CALC.: 4660 706 393	
	VEHICLE DESIGNATION: BACKHOE LOADER 102 S	
	WEIGHT EMPTY: 9,30 TO	
	ENGINE: PERKINS 1104-44TA	
	ENGINE POWER: 74,6 KW	
	SPEED: 2.200 U/MIN	
	INPUT TORQUE: 400 NM	
	SPEED: 1.400 U/MIN	
	TYRE RADIUS DYN.: 0,676 M	
	AXLE RATIO: 17,231	
	MAX. SPEED: 39,8 KM/H	
	PRODUCT DESCRIPTION: ZF-ERGOPOWER S	
	TRANSMISSION TYPE: 5 WG 98 4 WD	
	DROP CENTER DISTANCE: PTO SIDE HORIZONTAL 17 MM	
	PTO SIDE VERTIKAL 180MM	
	CONVERTER-SIDE HORIZ. 150MM	
	CONVERTER-SIDE VERTIKAL 300 MM	
	VEHICLE: BACKHOE-LOADER	
	1. GEAR FORWARD: 5,528	
	2. GEAR FORWARD: 2,866	
	3. GEAR FORWARD: 1,891	



Pos.	Information	Amendment number
	4. GEAR FORWARD: 1,158	
	5. GEAR FORWARD: 0,764	
	1. GEAR REVERSE: 4,956	
	2. GEAR REVERSE: 2,569	
	3. GEAR REVERSE: 1,038	
	CONVERTER: W 300	
	LOCK-UP CLUTCH: WITHOUT	
	STALL TORQUE RATIO: 2,38	
	TORQUE CONVERTER ABSORPTION 306 NM	
	STATOR FREEWHEEL: WITH	
	ENGINE INPUT: DIRECT MOUNTED TO ENGINE	
	ENGINE-CONNECTION: SAE 3	
	ENGINE: JOHN DEERE	
	BOLT CIRCLE: 350,0 MM	
	CONNECTION: HOLE	
	OUTPUT: STANDARD	
	OUTPUT SHAFT CONVERTER SIDE: SHAFT SAE DP 16/32 Z= 23	
	OUTPUT FLANGE PTO SIDE: DS 1480 SLIDING FLANGE	
	POWER TAKE OFF: 1 PTO COAXIAL ENGINE-DEPENDENT	
	1.PTO FLANGE: SAE_C_2LOCH	
	DRIVER / PROFILE: SAE C 12/24 DP 14 T	
	GEAR CHANGE CONTROL: ZF-POWERSHIFT	
	VOLTAGE: 12 VOLT	
	SPEED SENSOR: WITH	
	OIL LEVEL TUBE: MOUNTED ON PTO SIDE	
	OIL DIPSTICK: WITHOUT	
	FILTER INSTALLATION: DIRECT MOUNTED	
	OIL TEMPERATURE SENSOR: WITH (WITHOUT GAUGE)	
	WIRING: WITHOUT	
	OIL CAPACITY TRANSM.: CA. 15 LITRE	
	OIL FILLING TRANSM.: WITHOUT	
	OIL GRADE TRANSM.: TE- ML 03	
	PRIMER PAINT: BLACK RAL 9005	



Pos.	Information	Amendment number
	DOCUMENTATION GEAR BOX: -----	
	SECTION DRAWING: 4660 003 033	
	INSTALLATION DRAWING: 4660 603 009	
	GEARBOX DIAGRAM: 4660 700 067	
	OIL CIRCUIT DIAGRAM: 4660 700 068	

Plant

Page 1 from 1

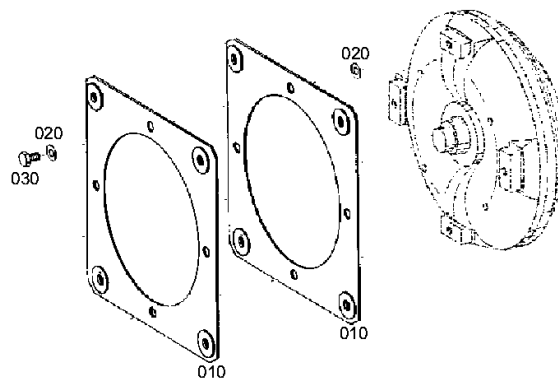
Material number: 4660.003.030

Plant: 466013000100

Material-assembly-group-no: 4660.130.001



5 WG 98 /
ENGINE CONNECTION



Plant

Page 1 from 1

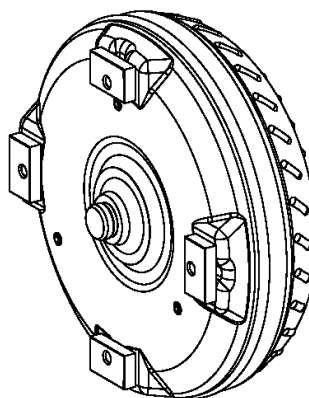
Material number: 4660.003.030

Plant: 466013401000

Material-assembly-group-no: 4660.134.010



5 WG 98 /
CONVERTER



010

Plant

Page 1 from 1

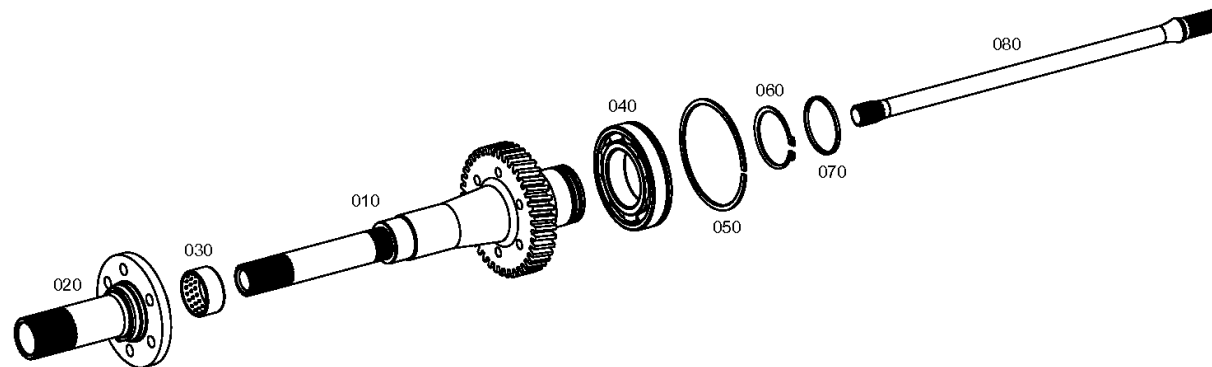
Material number: 4660.003.030

Plant: 466010200600

Material-assembly-group-no: 4660.102.006



5 WG 98 /
INPUT



Plant

Page 1 from 1

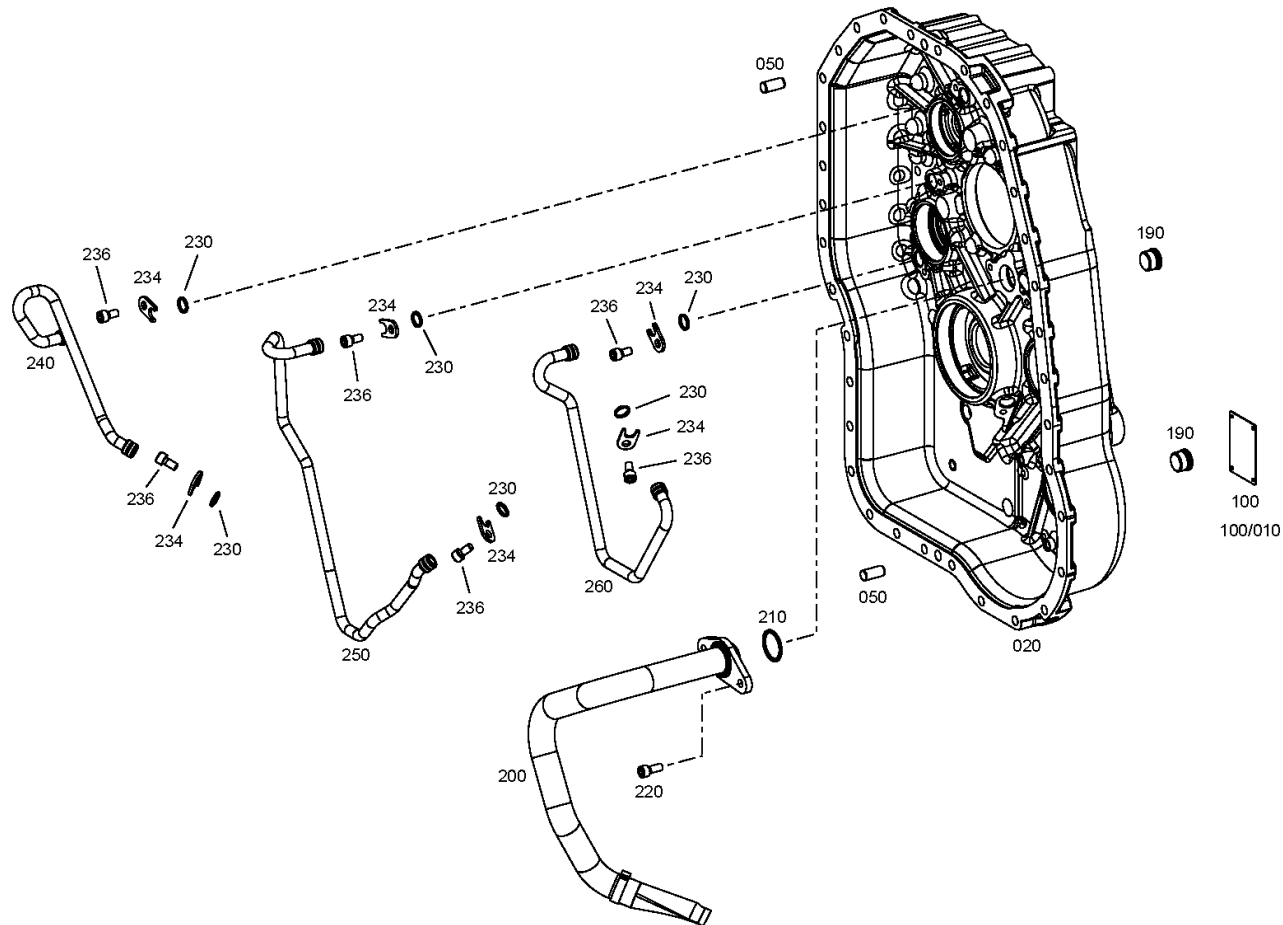
Material number: 4660.003.030

Plant: 466010102100

Material-assembly-group-no: 4660.101.021



5 WG 98 /
TRANSMISSION HOUSING



Plant

Page 1 from 1

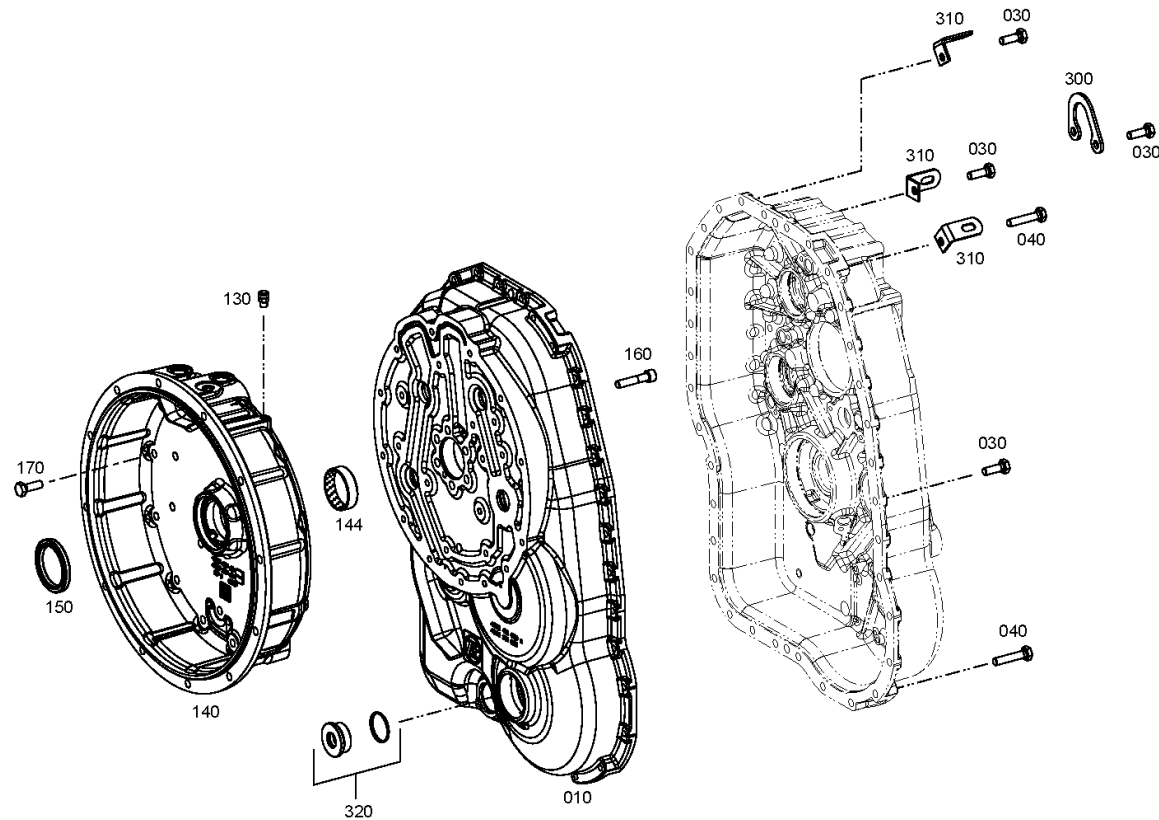
Material number: 4660.003.030

Plant: 466010181300

Material-assembly-group-no: 4660.101.813



5 WG 98 /
TRANSMISSION HOUSING



Plant

Page 1 from 1

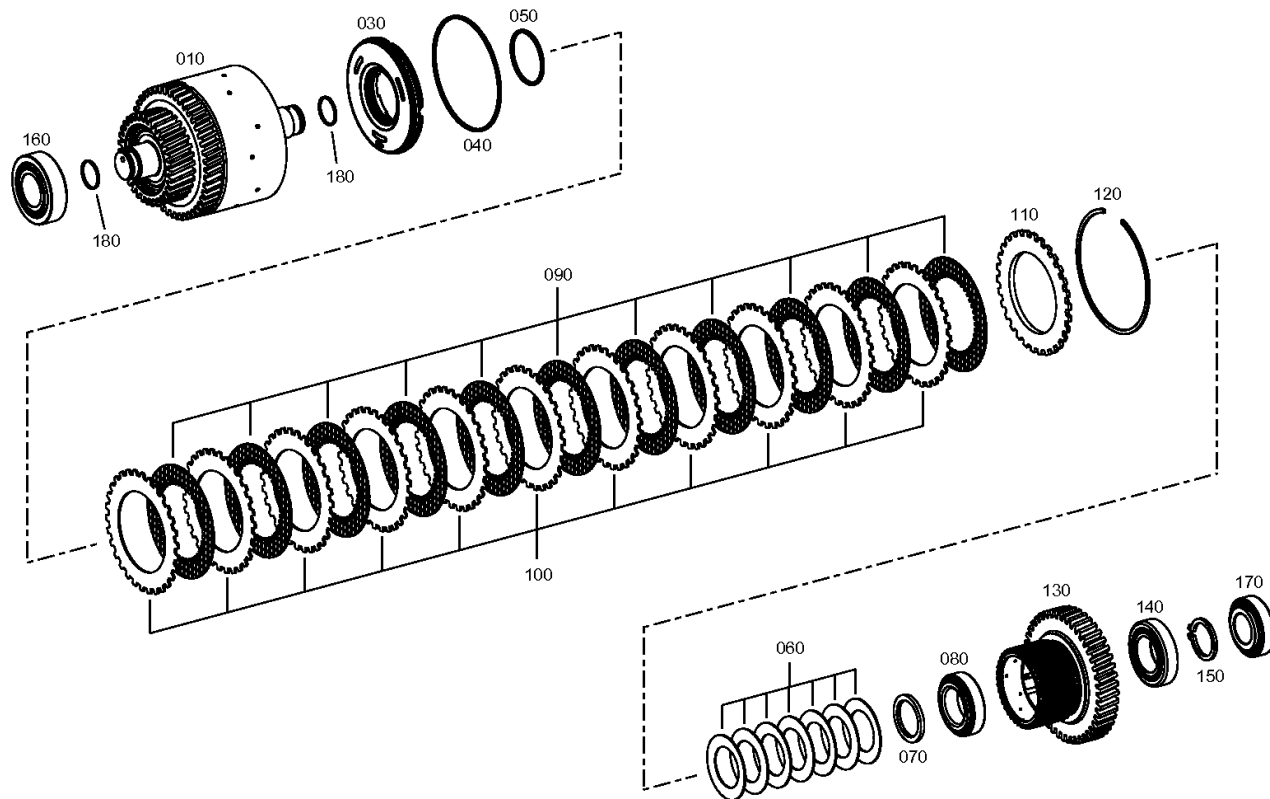
Material number: 4660.003.030

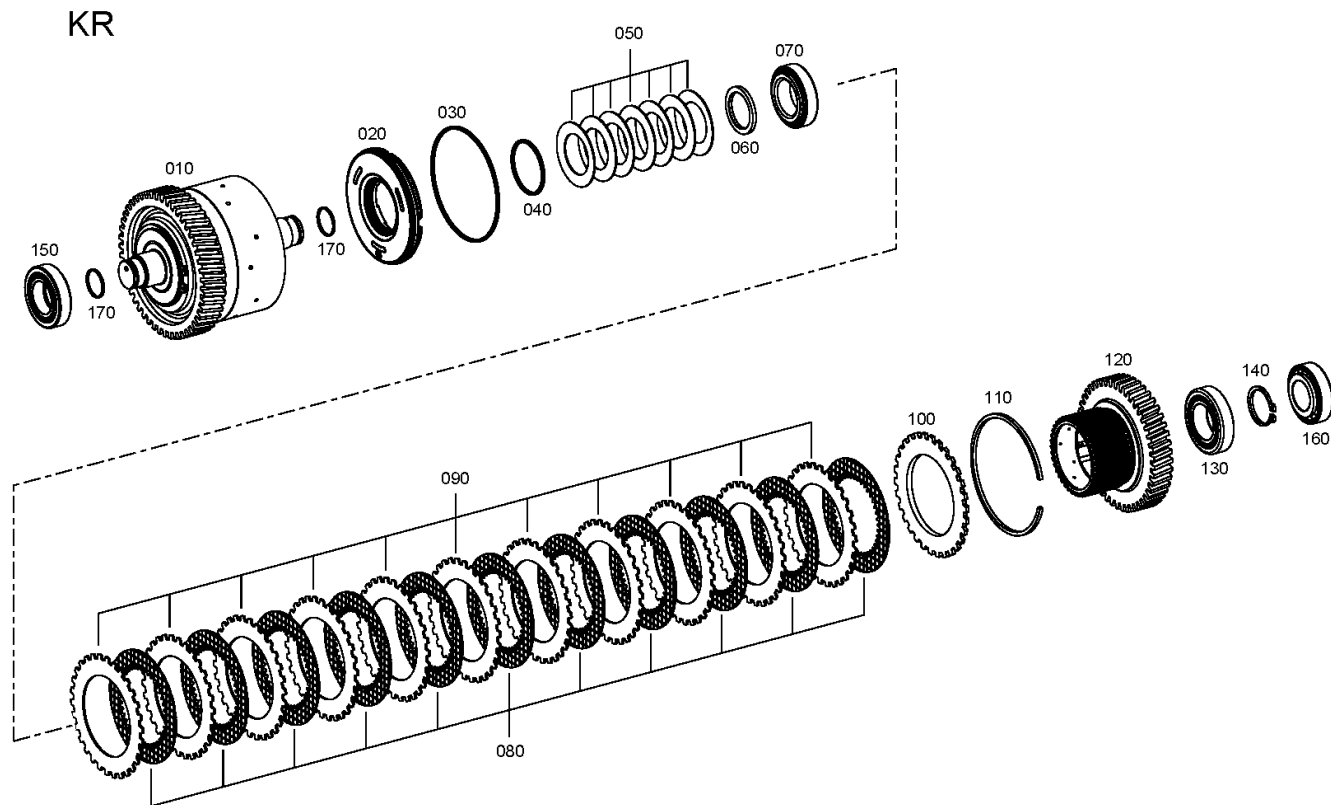
Plant: 466017501300

Material-assembly-group-no: 4660.175.013



5 WG 98 /
CLUTCH





Plant

Page 1 from 1

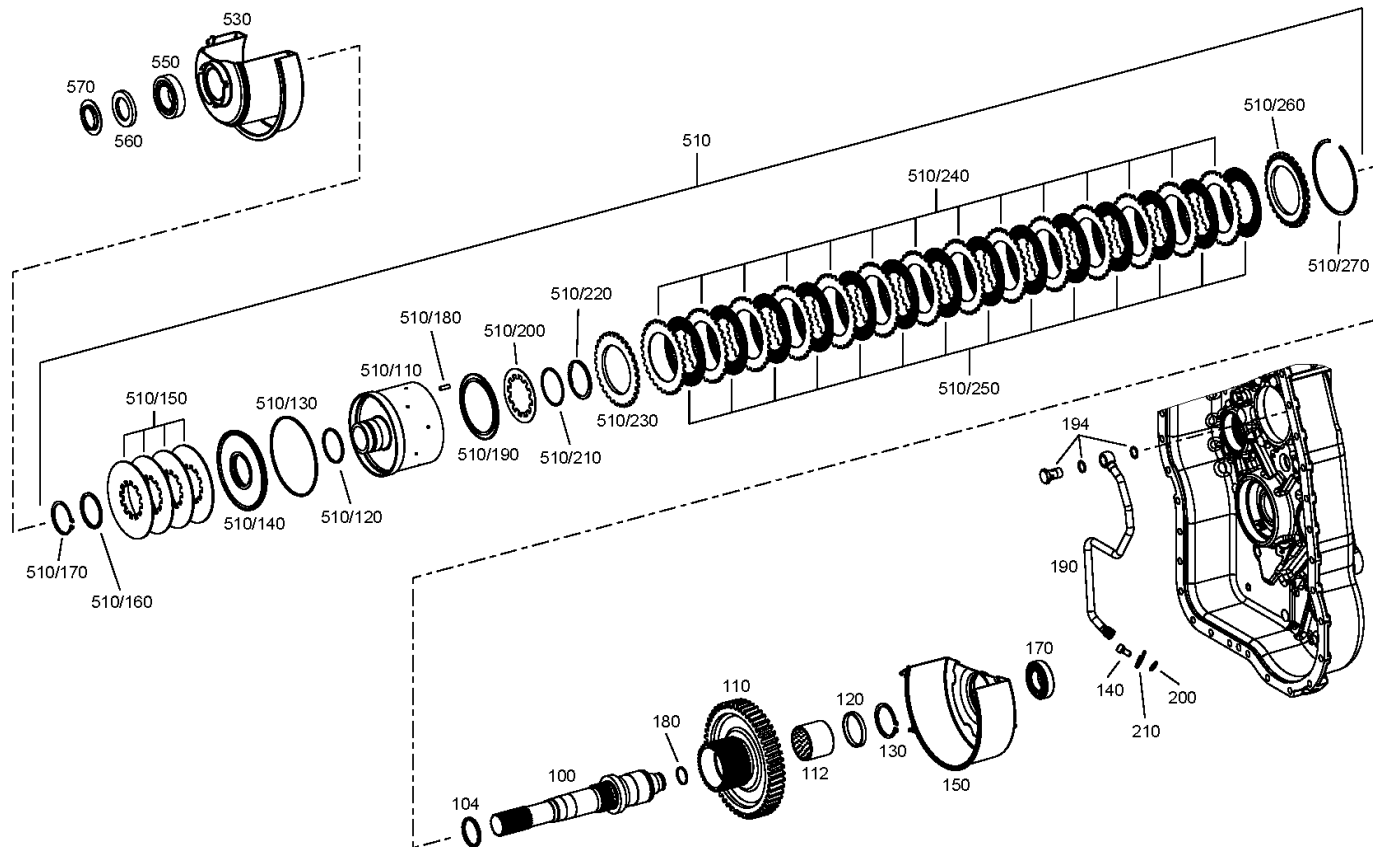
Material number: 4660.003.030

Plant: 466010507700

Material-assembly-group-no: 4660.105.077



5 WG 98 /
COUPLING



Plant

Page 1 from 1

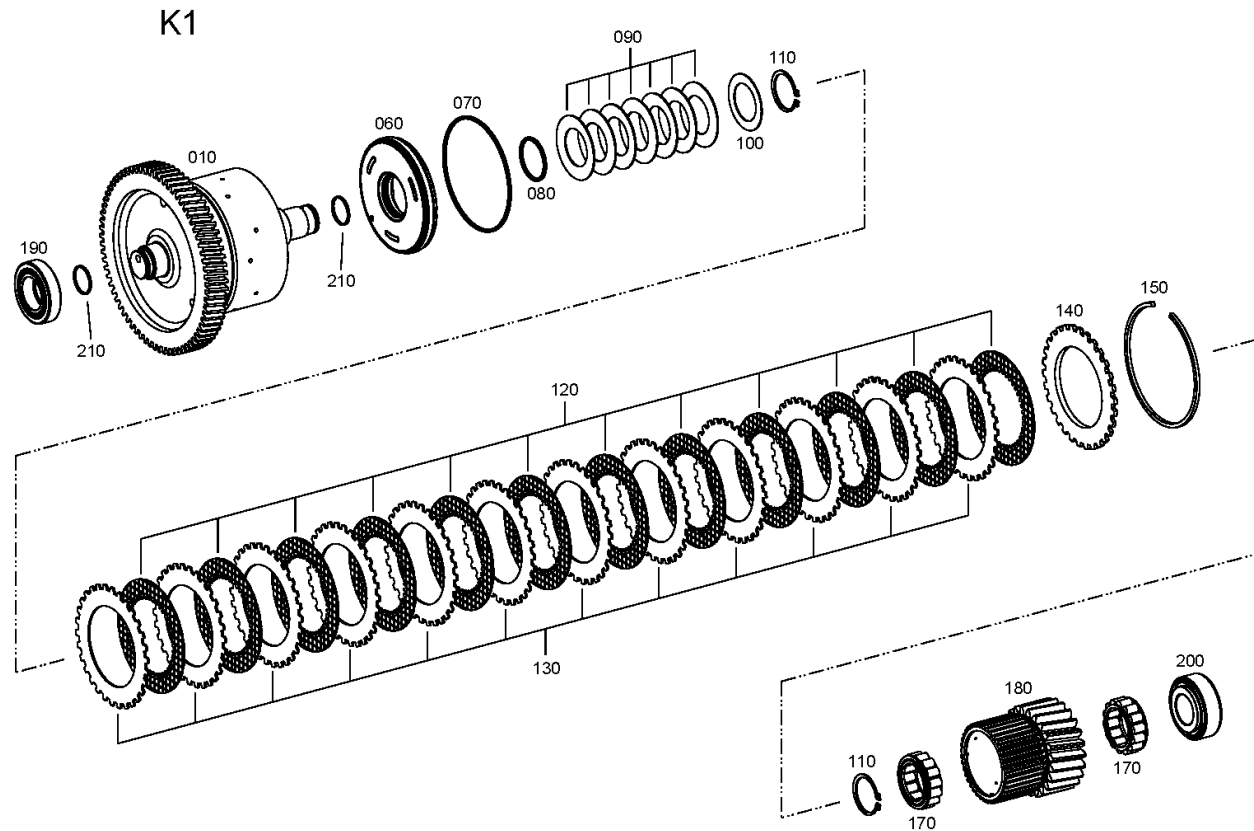
Material number: 4660.003.030

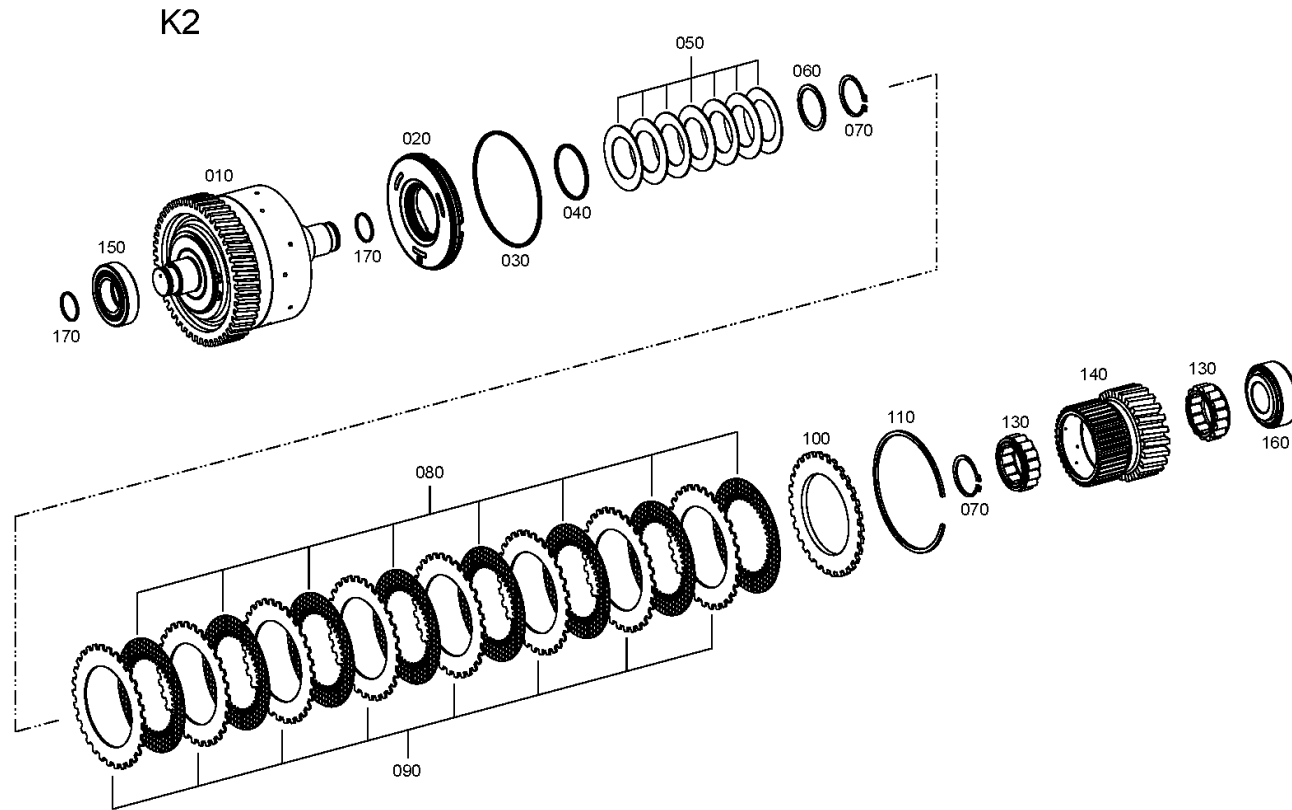
Plant: 466017101000

Material-assembly-group-no: 4660.171.010



5 WG 98 /
COUPLING





Plant

Page 1 from 1

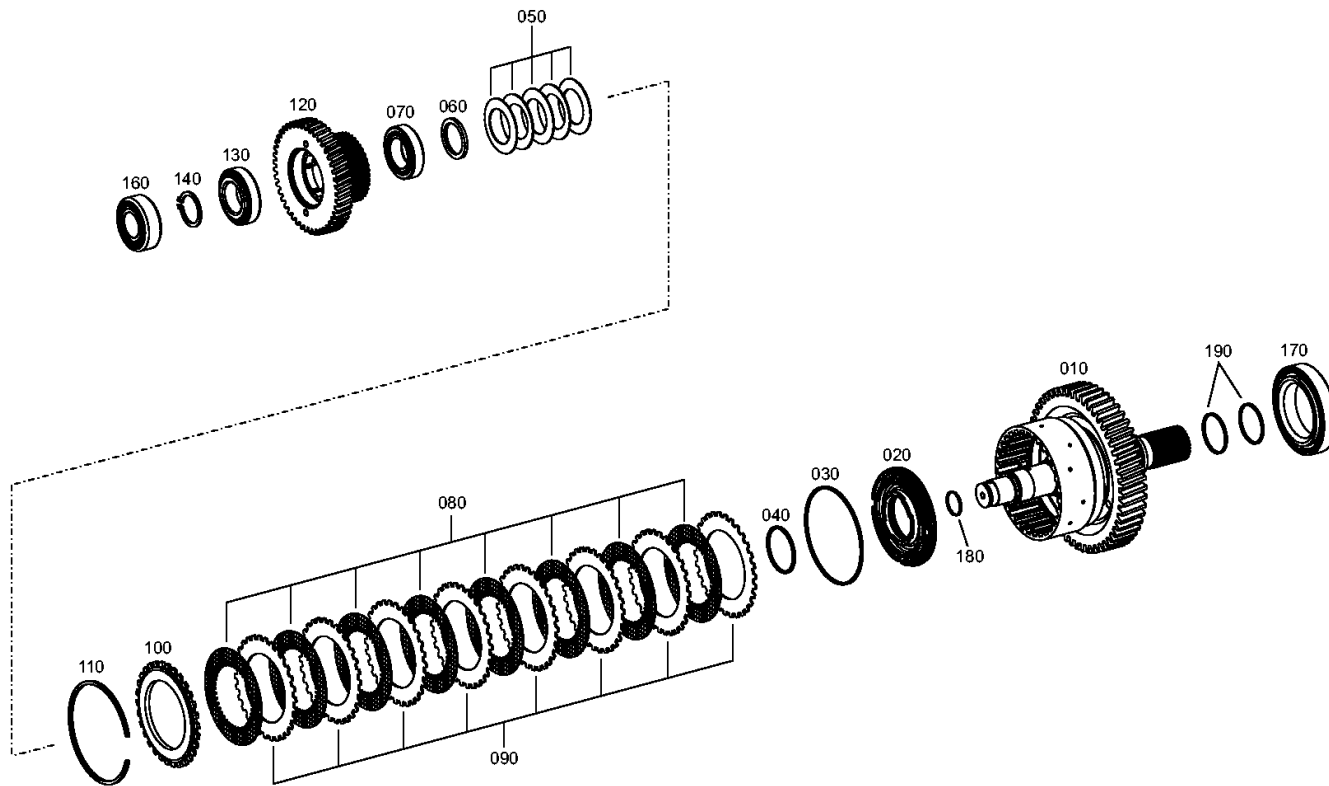
Material number: 4660.003.030

Plant: 466017300400

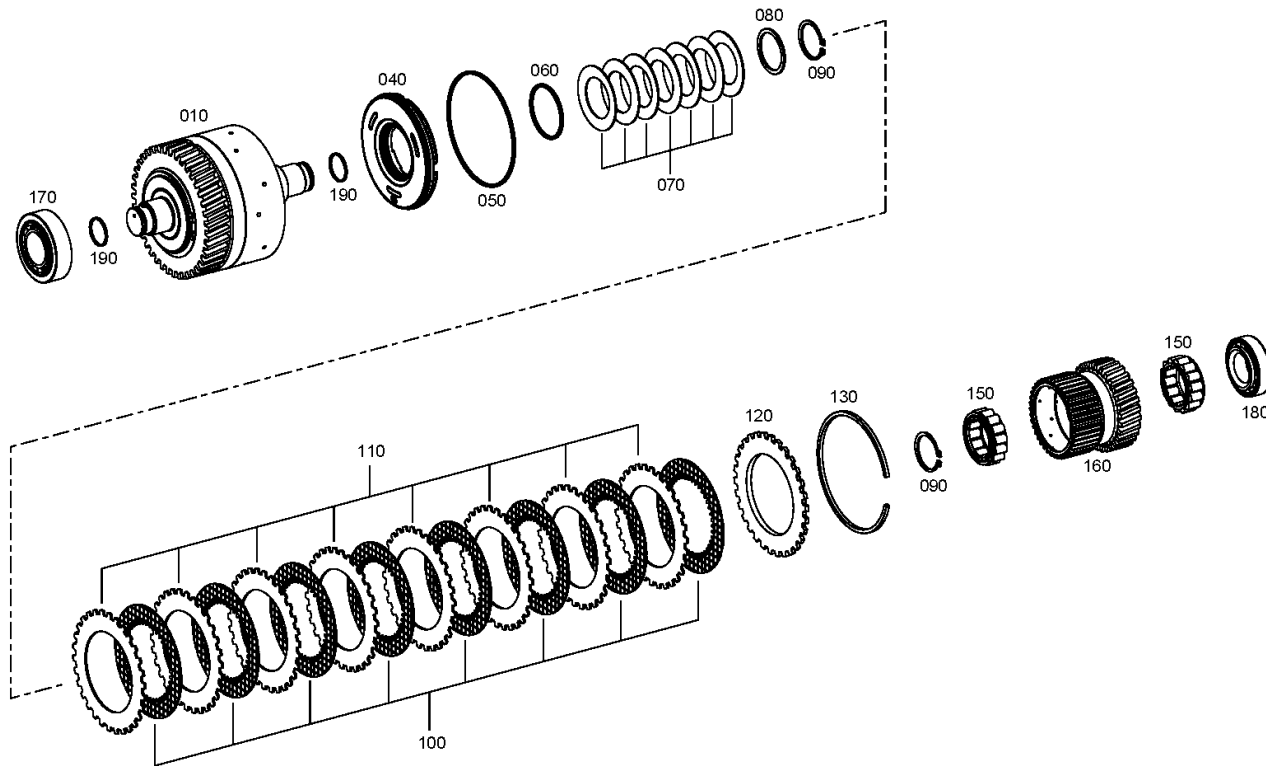
Material-assembly-group-no: 4660.173.004



5 WG 98 /
COUPLING



K4



Plant

Page 1 from 1

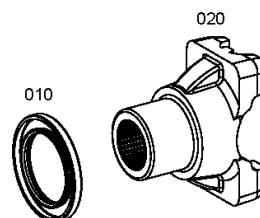
Material number: 4660.003.030

Plant: 466010381400

Material-assembly-group-no: 4660.103.814



5 WG 98 /
OUTPUT



Plant

Page 1 from 1

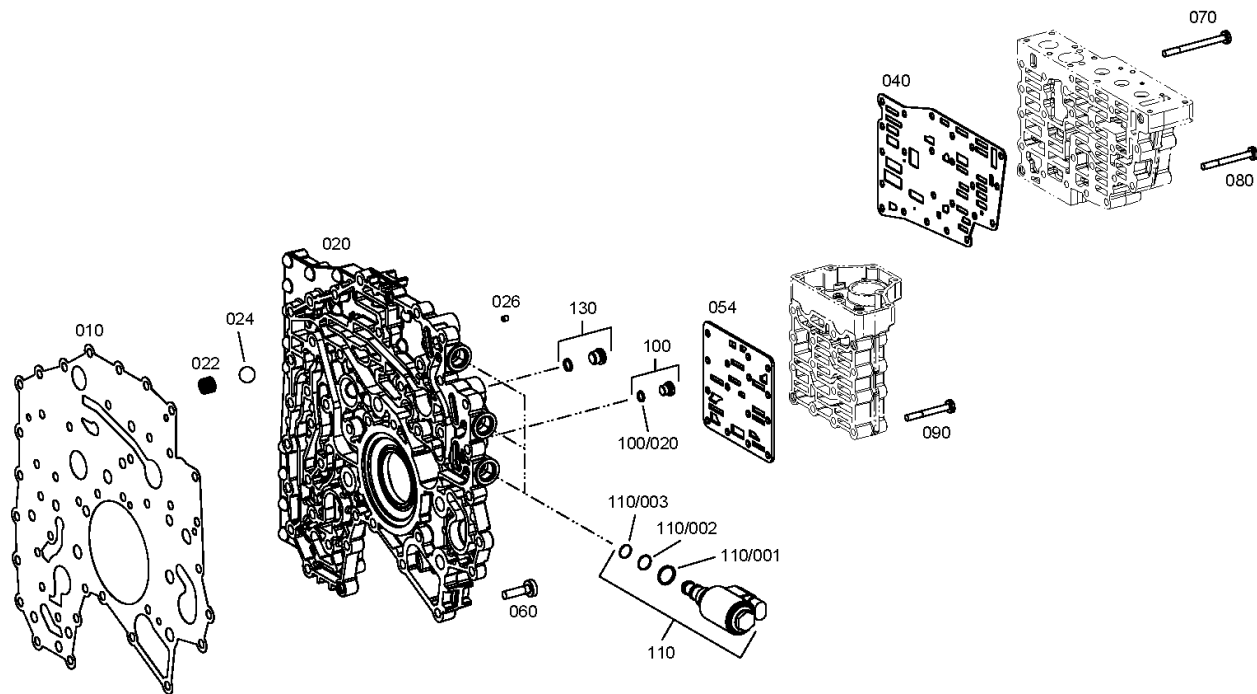
Material number: 4660.003.030

Plant: 466010603100

Material-assembly-group-no: 4660.106.031



5 WG 98 /
CONTROL UNIT



Plant

Page 1 from 1

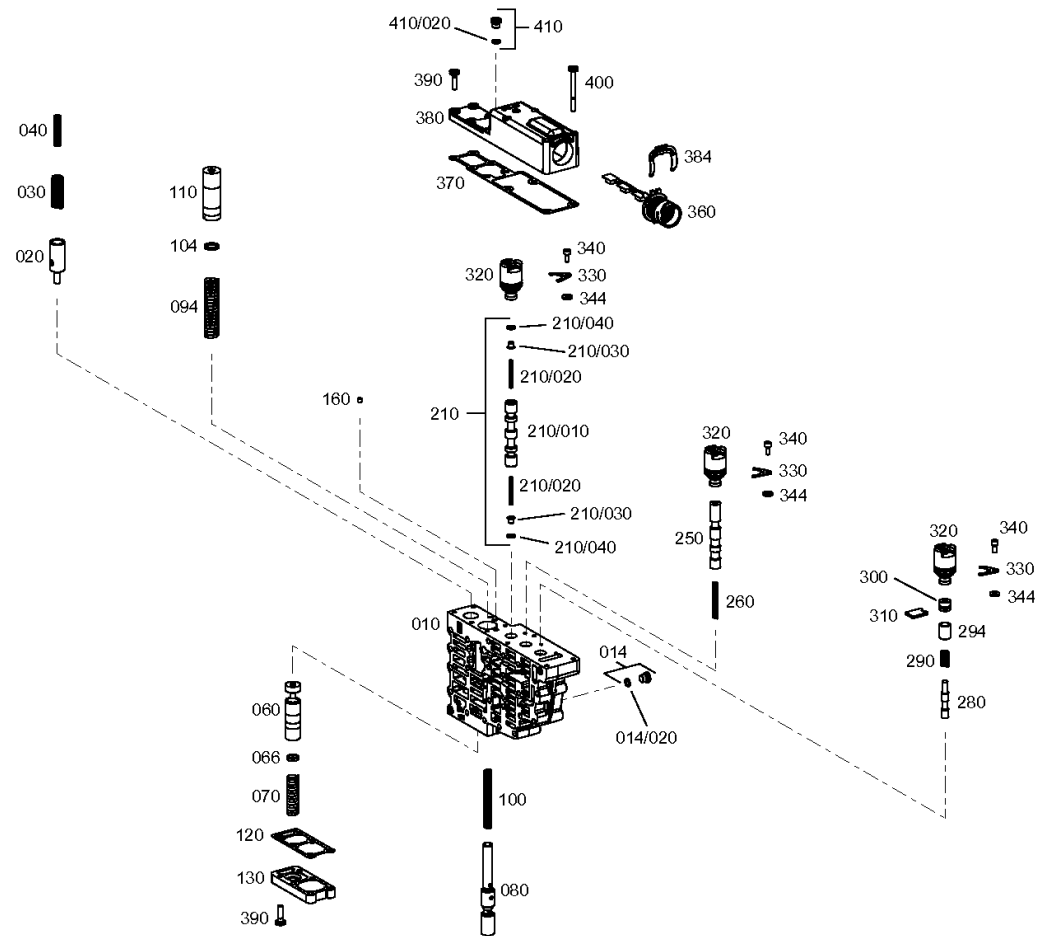
Material number: 4660.003.030

Plant: 466015901800

Material-assembly-group-no: 4660.159.018



5 WG 98 /
SHIFT SYSTEM



Plant

Page 1 from 1

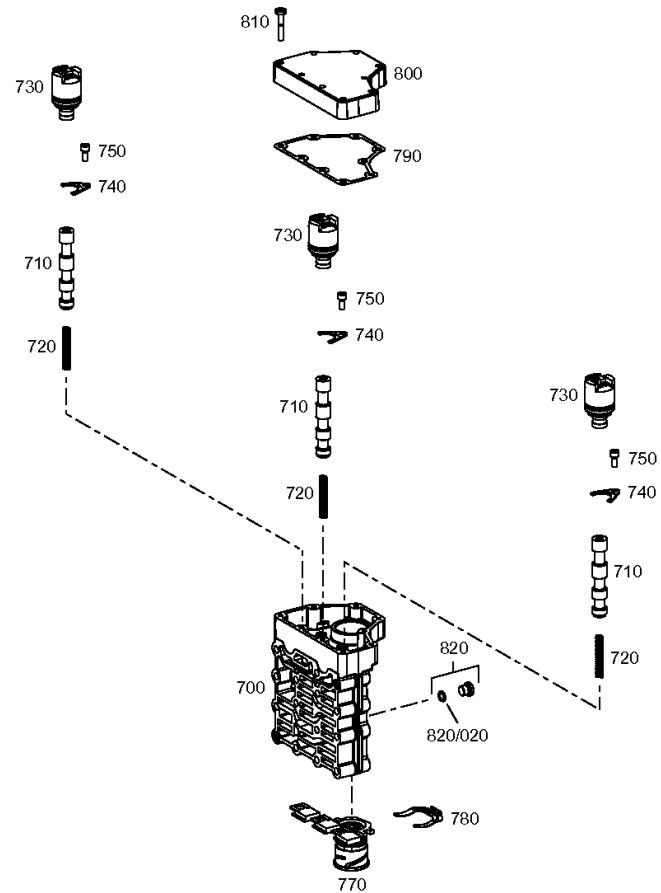
Material number: 4660.003.030

Plant: 466015940100

Material-assembly-group-no: 4660.159.401



5 WG 98 /
SHIFT SYSTEM



Plant

Page 1 from 1

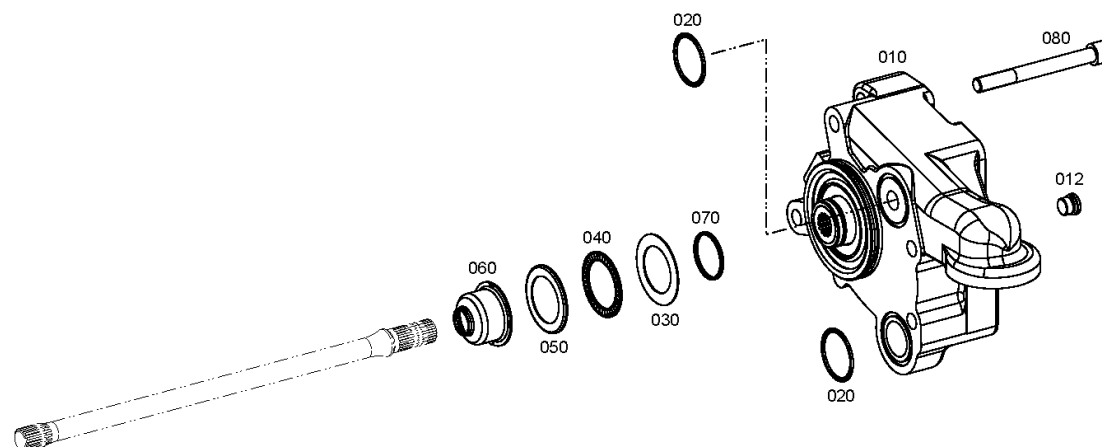
Material number: 4660.003.030

Plant: 466012200900

Material-assembly-group-no: 4660.122.009



5 WG 98 /
PRESSURE OIL PUMP



Plant

Page 1 from 1

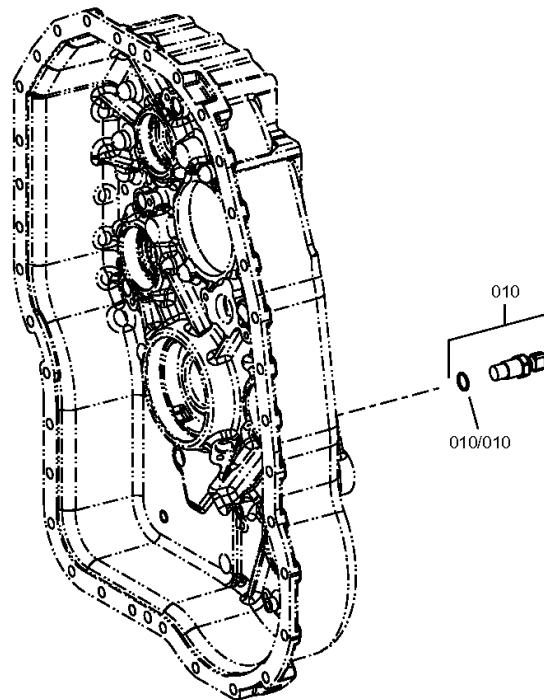
Material number: 4660.003.030

Plant: 466112500350

Material-assembly-group-no: 4661.125.003



5 WG 98 /
INDUCTIVE SENSOR



Plant

Page 1 from 1

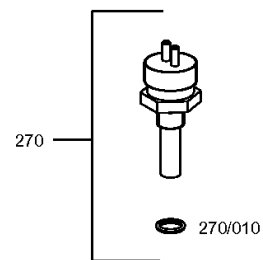
Material number: 4660.003.030

Plant: 466112400700

Material-assembly-group-no: 4661.124.007



5 WG 98 /
TEMPERATURE SENSOR



Plant

Page 1 from 1

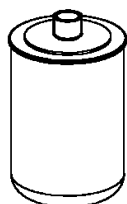
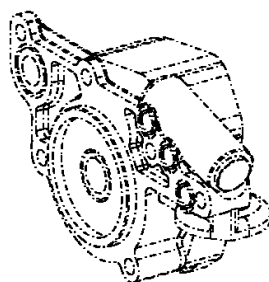
Material number: 4660.003.030

Plant: 466013800200

Material-assembly-group-no: 4660.138.002



5 WG 98 /
FILTER



030