



Spare Parts Catalog

6 S 850

Material number: 1290.055.130

Current date: 19.07.2013

ZF Friedrichshafen AG
Hauptverwaltung
80038 Friedrichshafen
Deutschland

Telefon: +49 7541 77-0

Telefax: +49 7541 77-908000

www.zf.com

zuständiges Werk:
Friedrichshafen

Notes relating to the spare parts catalog

Setup of the spare parts catalog

- Cover sheet
- Technical Cover (only in SDM print)
- Overview of figures
- Figure
- Associated parts list
- Next figure
- Associated parts list
- ...

Figure and parts list



Overview of figures

Bildtafel Figure	Sachnummer Product number	Benennung (Description)	Technische Info Technical info	Description (Benennung)	Menge Quantity	Einheit Unit
068.08.17	1316.170.001	AUSLEGER	WL	SHIFT TURRET	1	Stk
068.08.06	1316.170.031	DECKEL	WL*H-H *VM	COVER	1	Stk
068.08.14	1316.170.808	DECKEL	WL*AUSL+GEH*H-H*HF160N	COVER	1	Stk
08	1316.170.441	ANSCHLUSSTEILE	WL*NG-VORB*RG-SCHL*168N *BAJONETT	CONNECTING PARTS	1	Stk

The "gap" indicates that there is no separate graphics panel (poster) for this assembly
The parts of this assembly are shown with the same mid-section number on the figure

1 Positions and subpositions

Pos.	Sachnummer Product number	Benennung (Description)	Technische Info Technical info	Description (Benennung)	Menge Quantity	Einheit Unit
0370	1315.201.054	RUECKLAUFBOLZEN	KPL.16S151*SG*L= 79	REV.IDLER SHAFT	1	Stk
/0120	0631.329.293	SPANNSTIFT		SLOT. PIN	1	Stk

Positions marked with "/" are the individual items of a completion
For example: Position 0370 contains a centering pin with the position /0120

2 Combinations with standardized parts

Pos.	Sachnummer Product number	Benennung (Description)	Technische Info Technical info	Description (Benennung)	Menge Quantity	Einheit Unit
0630		VERSCHL.SCHR.		SCREW PLUG	1	Stk
	0636.302.067	VERSCHL.SCHR.		SCREW PLUG	1	Stk
	0634.801.249	DICHTRING	A 26 X 31	SEALING RING	1	Stk

The parts list shows the components included in the combination of standardized parts

3 Depiction of position/item number on the figure and in the parts list

01.620 - on the figure 01 relates to the assembly in which the position is included. Due to program-related reasons, it is shown on the figure.

0620 - in the parts list

Pos.	Sachnummer Product number	Benennung (Description)	Technische Info Technical info	Description (Benennung)	Menge Quantity	Einheit Unit
0620	0732.040.736	DRUCKFEDER		COMPRESSION SPRING	1	Stk

4 *-Positions

Positions marked with an * are optional i.e. inclusion in the parts list is not mandatory.
The following note is shown on the figure

je nach Stücklistenausführung
depending on spec. number
*
suivant la nomenclature
secondo la distinta base

5 Parts, dotted display

Parts with dotted display on the figure are only used for orientation of other parts



Pos.	Information	Amendment number
001	Use case -----	
002	Customer MAN	
003	City NN	
004	DUNS	
006	Sales Name L2000	
007	Manufacturer MAN	
008	Engineering Name	
009	Product Use TRUCK	
011	SOP	
012	Engine	
013	Sales Designation	
014	Manufacturer MAN	
015	Eng.Displ.	
016	Cylinder	
017	Nom. power 162 kW	
018	RPM at nom. power 2400 1/min	
019	Nom. torque 850 Nm	
020	RPM at nom. torque 1100 1/min	
021	Classification use case -----	
022	APPROVAL NOTE 1 ERSTEINBAU*UEBERPRUEFUNG ERFORDERLICH	
026	DESIGNATION, CLUTCH MF395	
027	MANUFACTURER, CLUTCH ZF-SACHS	
032	DYNAMIC TYRE RADIUS 372 mm	
033	REAR AXLE RATIO 4.11	
037	PERMISS.GROSS VEHICLE WEIGHT 10 t	
038	PERMISS.GROSS COMBIN.WEIGHT 22 t	
043	Product description -----	
044	INSTALLATION POS TRANSMISSION HORIZONTAL LEFT	
045	TRANSMISSION ATTACHMENT FLANGE-MOUNTED	
047	RATIO, BOTTOM GEAR 6.72	
048	RATIO, TOP GEAR .79	
049	SET OF RATIOS SG	
050	RATIO, 1ST GEAR 6.72	



Pos.	Information	Amendment number
051	RATIO, 2ND GEAR 3.66	
052	RATIO, 3RD GEAR 2.18	
053	RATIO, 4TH GEAR 1.41	
054	RATIO, 5TH GEAR 1	
055	RATIO, 6TH GEAR .79	
056	RATIO, 1ST GEAR REVERSE 6.03	
057	DESIGN GEARING LOW NOISE GEARING	
058	DESIGN, SHIFT SYSTEM TURNING SHAFT	
059	POSITION, GEAR SHIFT SYSTEM HORIZONTAL RIGHT	
062	DESIGN, SEPARATING CLUTCH FULL-SYNCHRONIZED	
064	REFERENCE LENGTH INPUT SHAFT 70.5 mm	
065	DIAMETER, JOURNAL, INPUT SHAFT 25 mm	
066	STANDARD TYPE INPUT SHAFT SAE	
067	NUMBER OF WEDGES INPUT SHAFT 10	
068	TYPE FIT SPIGOTS INPUT SHAFT F7	
071	VERSION OF INPUT SHAFT FORM C	
072	DIAMETER SHAFT OF INPUT SHAFT 42 mm	
073	NOMINAL DIAMETER INPUT SHAFT 1.75 in	
074	BUSH VARIANT INPUT SHAFT WITHOUT GROOVE	
080	DESIGN,CONN., CLUTCH HOUSING SAE 2	
084	NOTE ON RELEASE BEARING FLANGE CENTRAL RELEASE	
087	DESIGN BEARING OUTPUT STANDARD SUSPENSION	
088	OUTER DIA. OUTPUT FLANGE RA 150 mm	
090	NO.OF BORES OUTPUT FLANGE HA1 4	
091	BORE DIA. OUTPUT FLANGE RA 13 mm	
093	REF. LENGTH OUTPUT FLANGE RA 737 mm	
097	DIMENSION SHIFT TURRET DIST. 261 mm	
098	MEAS. LOC. SHIFT TURRET DIST. DRILL HOLE SHIFT LEVER	
104	RADIUS 1 SHIFT LEVER 55 mm	
111	LEVER POSITION SHIFTING OUTPUT C	
115	GEAR SHIFT LEVER ANGLE EPSILON 24 GRAD	
116	SPRING ARRANGEMENT Q9	
117	SPRING FORCE DETENT PLUNGER RG 176 N	



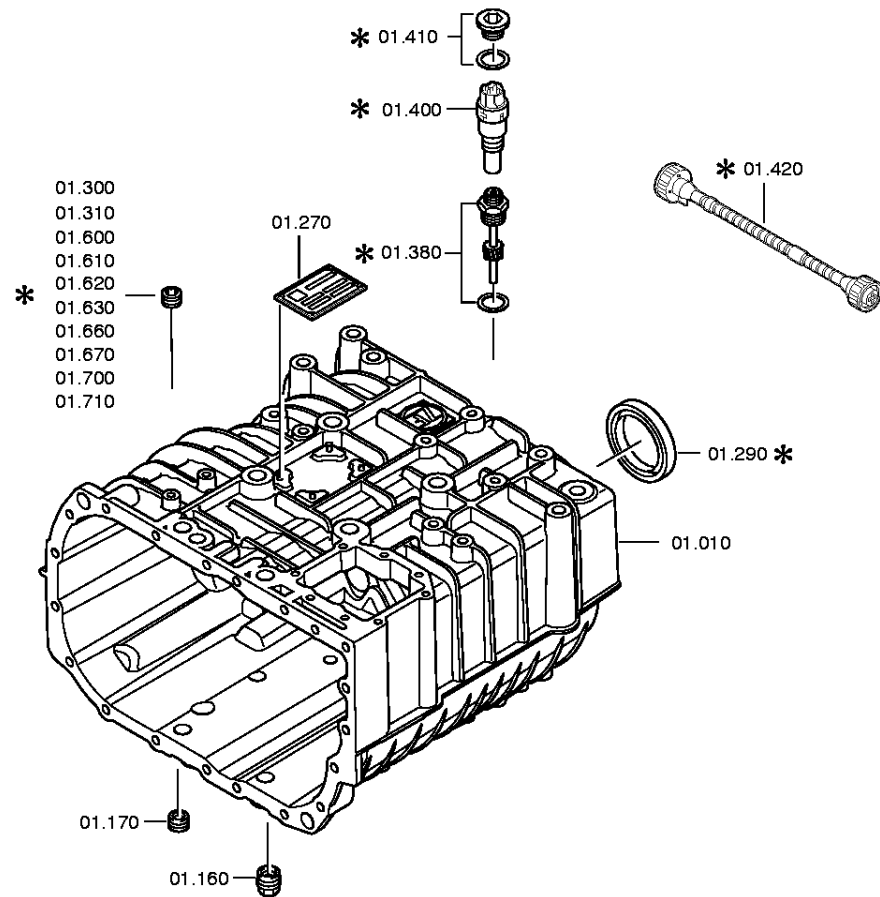
Pos.	Information	Amendment number
120	SELECTION PATTERN VARIANT GEAR SHIFT PATTERN 1	
126	SWITCH, REVERSE GEAR y	
127	DESIGN, RG (REV.GEAR) SWITCH OPENING SWITCH	
128	NOTE ON SWITCH, REVERSE GEAR GEAR SHIFT RAIL	
129	PROT.CAP SWITCH, REVERSE GEAR y	
130	DESIGN, CONNECTION, RG SWITCH DIN BAYONET	
146	VERSION OF CLUTCH HOUSING INTEGRATED	
147	TYPE OF RELEASE MECHANISM CENTRAL	
148	VERSION OF CLUTCH CYLINDER CSC	
153	DESIGN ACTUATION COUPLING DEPRESSED	
155	INSTALL. DIM. CLUTCH HOUSING 107 mm	
158	DIAMETER CLUTCH HOUSING 82 mm	
159	THREAD DIA. MTG BOLT SUSPENSION 14	
161	GEW.STEIGUNG BEF.SCHR KUPL.GEH 1.5 mm	
174	NO. PULSES PULSE SENSOR SFAH68 6 IMP/U	
177	VERSION PULSE SENSOR SFA H68 WITH	
180	PROT.CAP PULSE SENSOR SFA H68 y	
204	OIL CAPACITY, GEARBOX 7.5 dm3	
205	OIL FILL VARIANT EX WORKS	
206	OIL GRADE PERMISSIBLE TITAN EG75 ZF	
208	COLOR JET BLACK	
209	COLOUR CLASSIFICATION ACC. TO RAL 9005	
211	PAINTING, ZF STANDARD 915 W	
213	CODING OUTER CONSERVATION KA1	
214	SCOPE OUTER CONSERVATION T	
215	CODING INNER CONSERVATION KI1	
216	CONSERVATION SPECIFICATION ZFN 916	
217	CODIERUNG STOPFENANZAHL	
218	Documents -----	
219	SCHALTGETRIEBE Drawing 1290.055.700	
220	DREHW.SCHALTUNG Drawing 1290.607.001	
221	6-GANG-GETRIEBE Drawing 1290.655.029	
222	Drawing 1290.700.087	

Plant

Page 1 from 2

Material number: 1290.055.130
Plate: 032.01.05-1
GEARBOX HOUSING

6 S 850 /
GEARBOX HOUSING

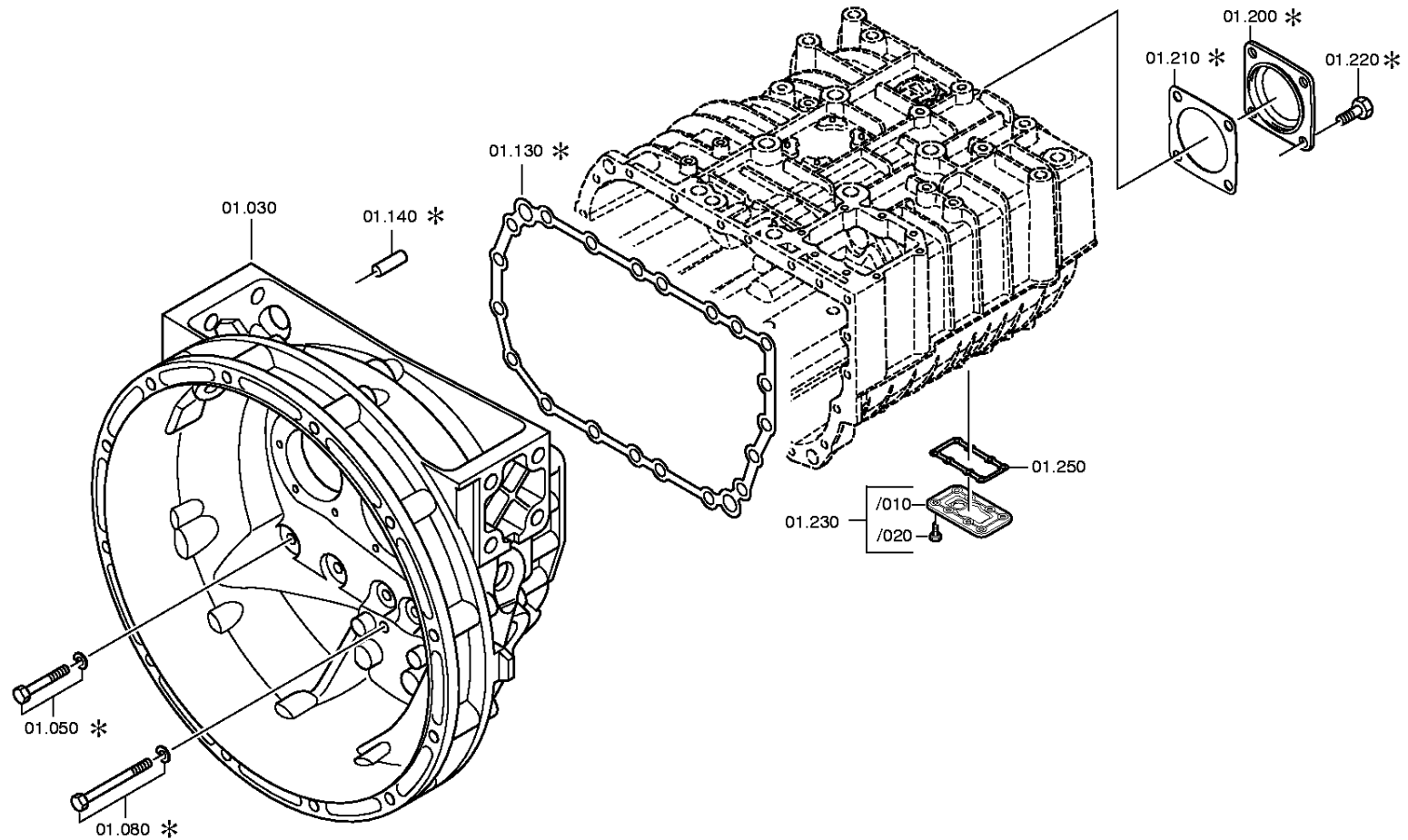


Plant

Page 2 from 2

Material number: 1290.055.130
Plate: 032.01.88-1
GEARBOX HOUSING

6 S 850 /
GEARBOX HOUSING

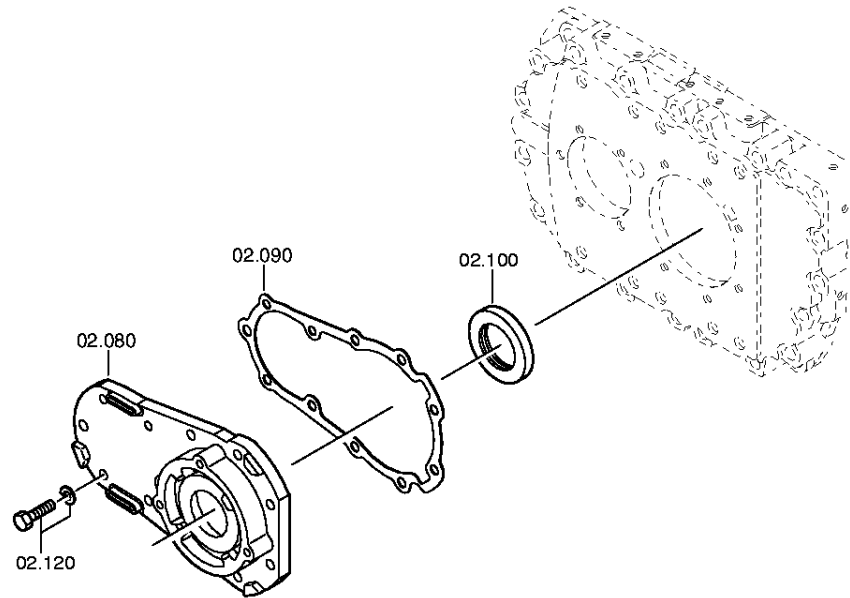


Plant

Page 1 from 2

Material number: 1290.055.130
Plate: 032.02.44-1
INPUT SHAFT

6 S 850 /
CONNPLATE

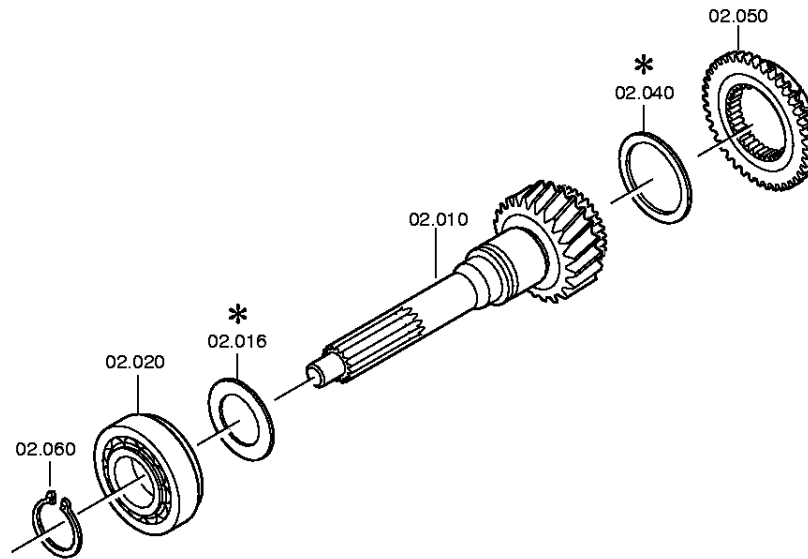


Plant

Page 2 from 2

Material number: 1290.055.130
Plate: 032.02.04-1
INPUT SHAFT

6 S 850 /
CONNPLATE

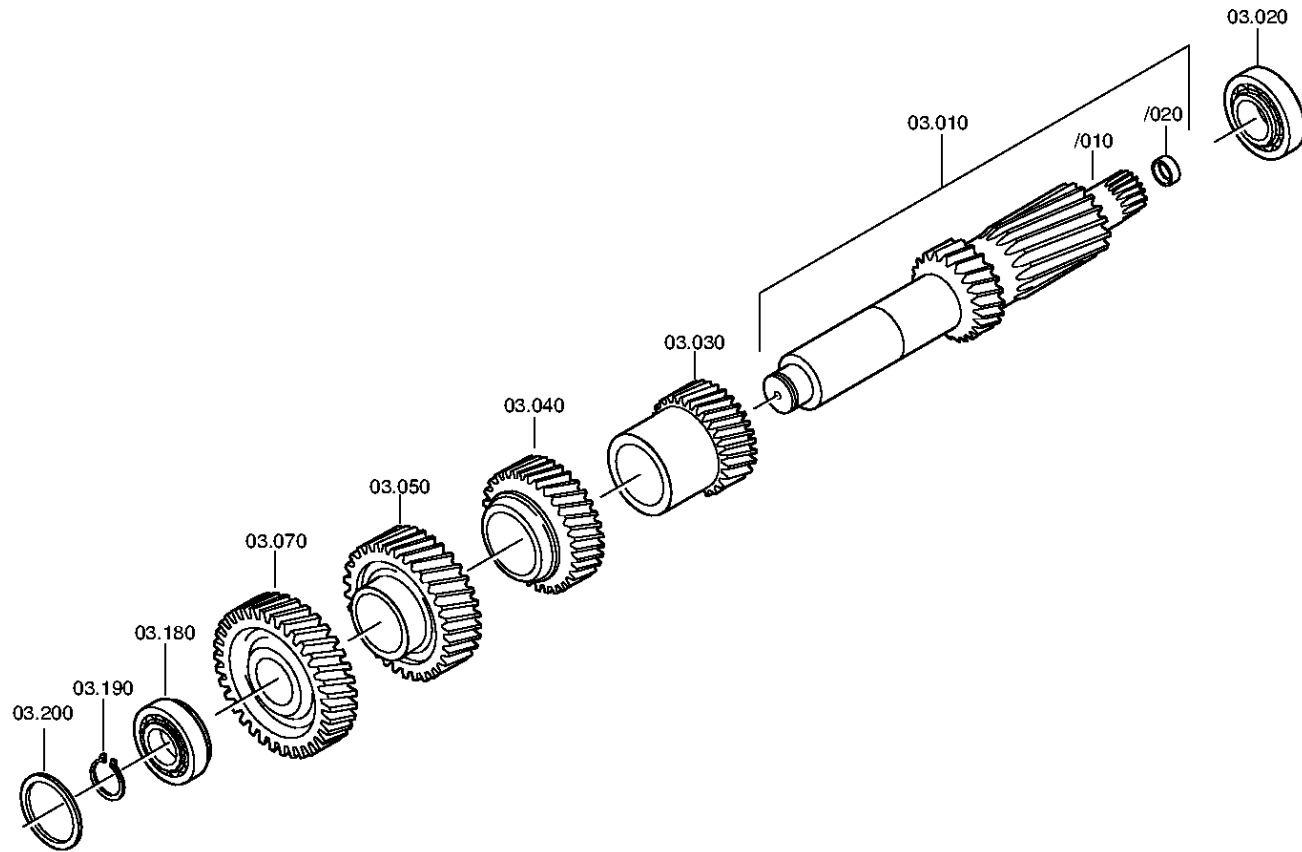


Plant

Page 1 from 1

Material number: 1290.055.130
Plate: 032.03.02-1
LAYSHAFT

6 S 850 /
LAYSHAFT

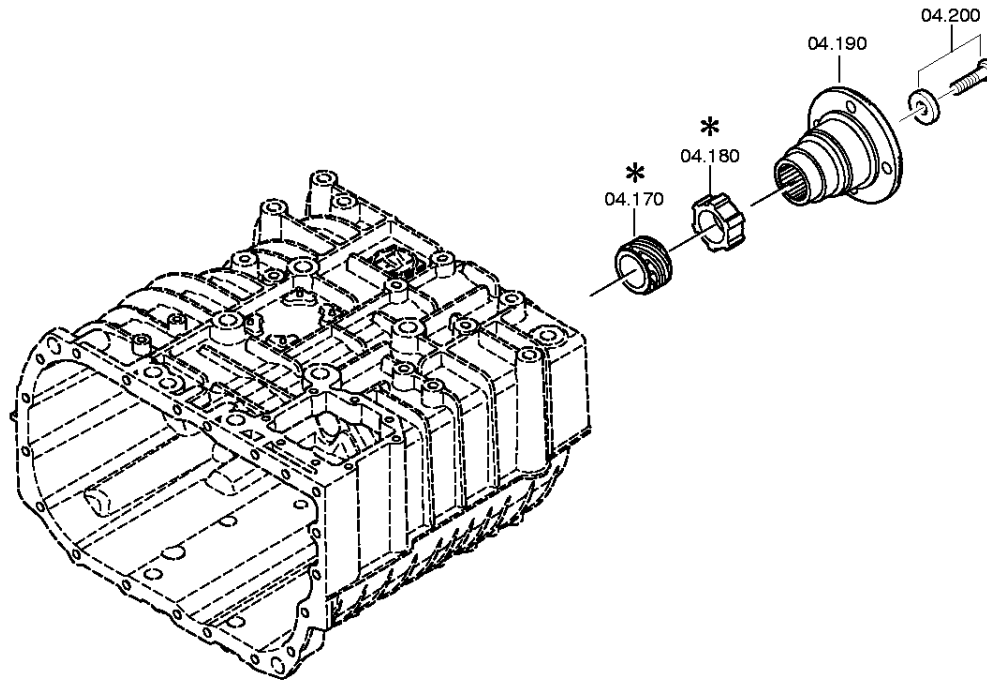


Plant

Page 1 from 2

Material number: 1290.055.130
Plate: 032.04.86-1
MAIN SHAFT

6 S 850 /
MAIN SHAFT

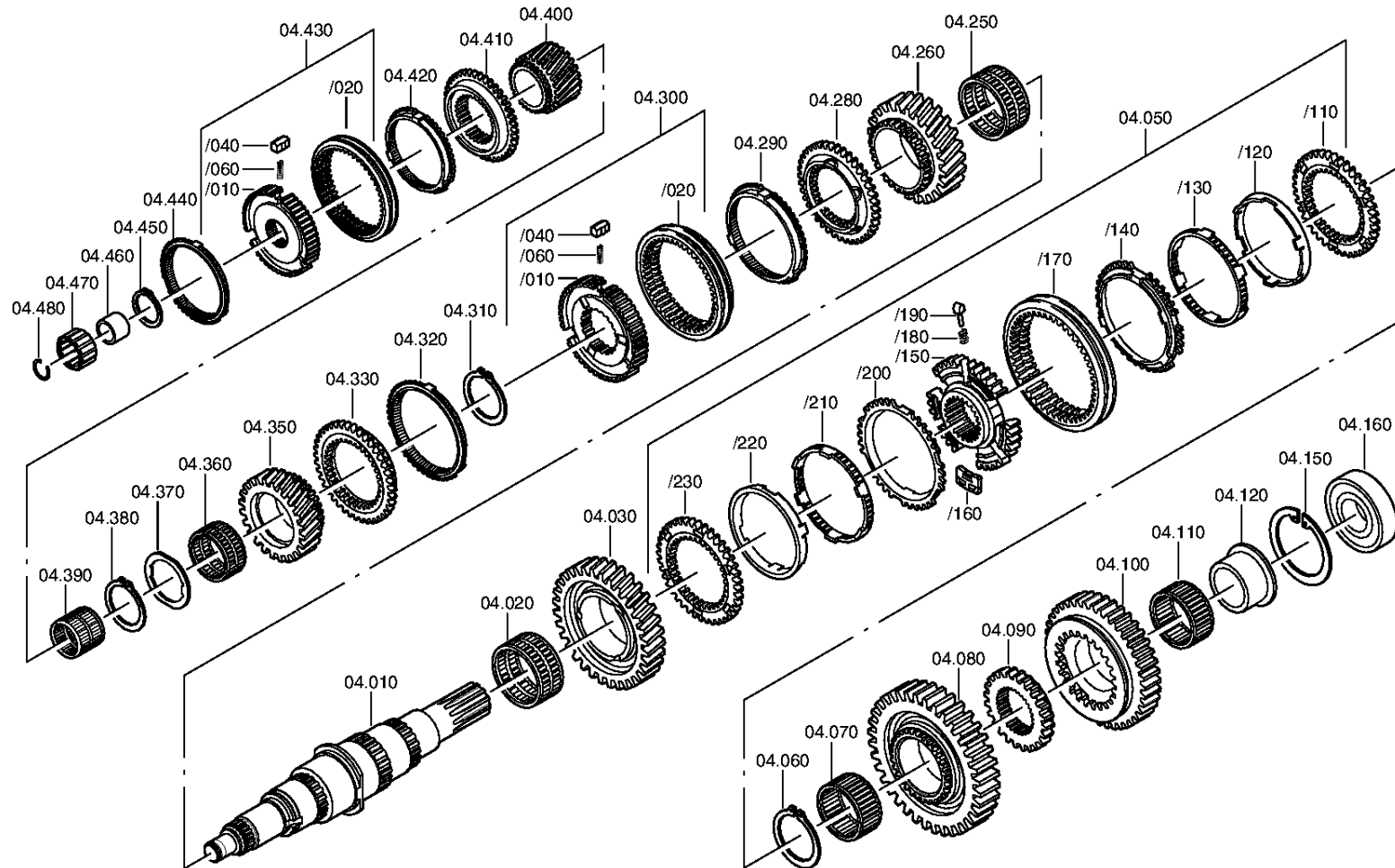


Plant

Page 2 from 2

Material number: 1290.055.130
Plate: 032.04.06-1
MAIN SHAFT

6 S 850 /
MAIN SHAFT



Plant

Page 1 from 1

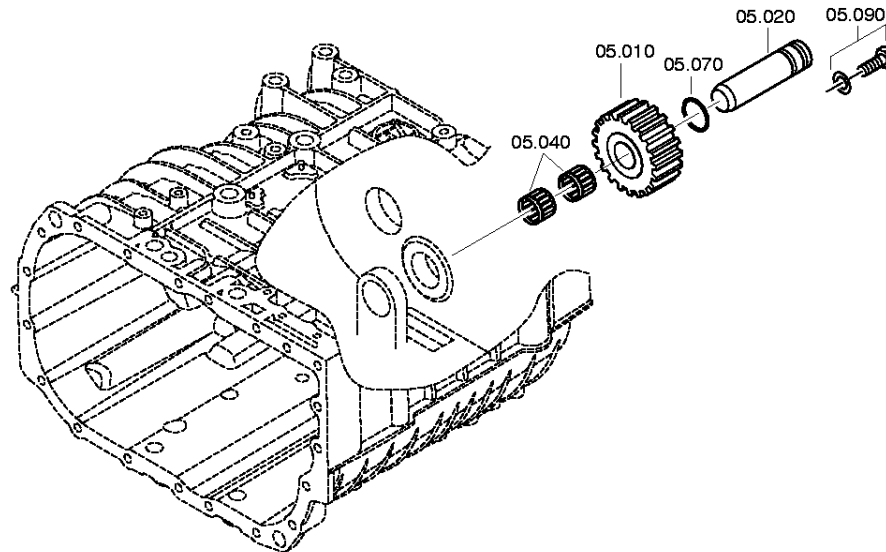
Material number: 1290.055.130

Plate: 032.05.01-1

Material-assembly-group-no: 1290.105.017

6 S 850 /

RETURN

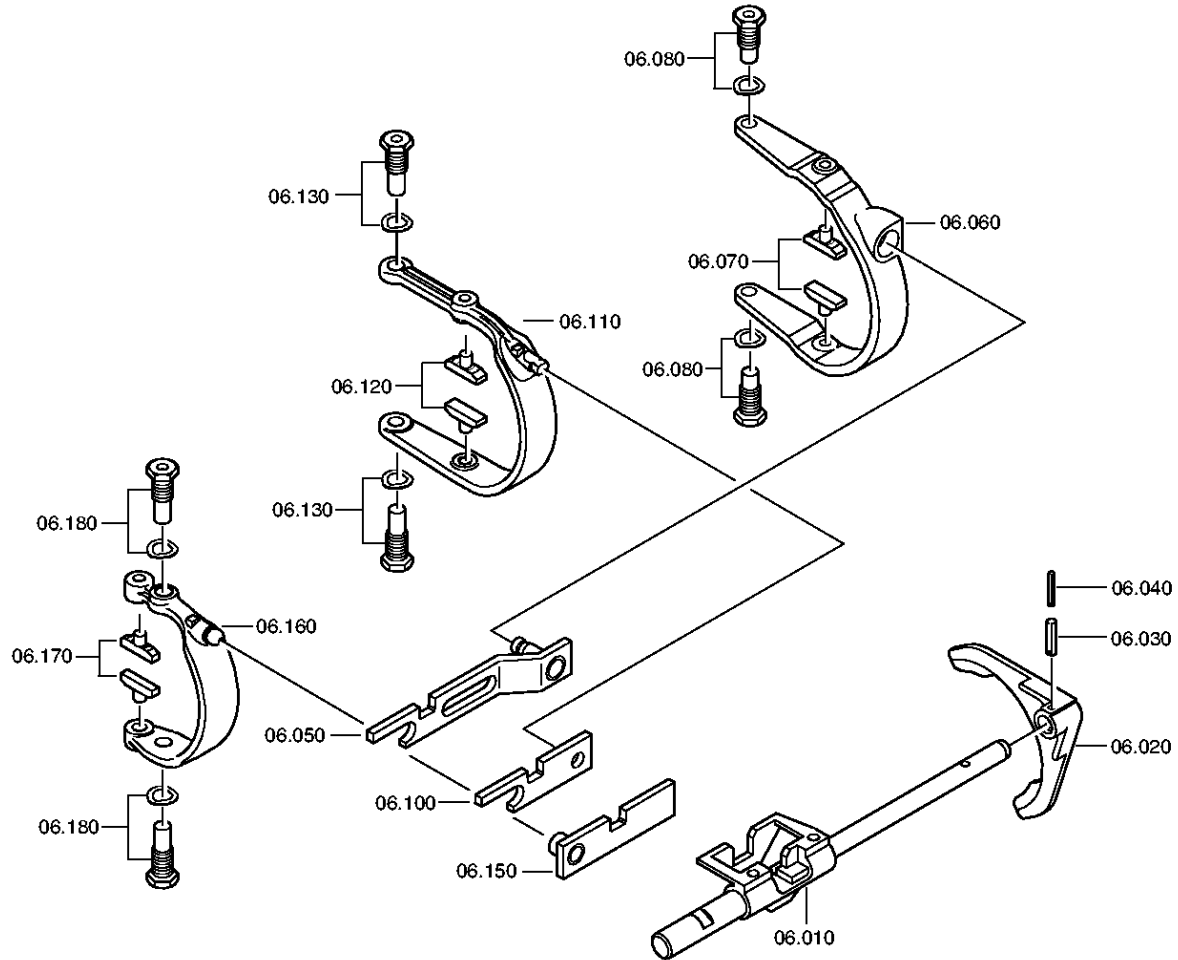


Plant

Page 1 from 2

Material number: 1290.055.130
Plate: 032.06.09-1
GEAR SHIFT SYSTEM

6 S 850 /
GEAR SHIFT SYSTEM

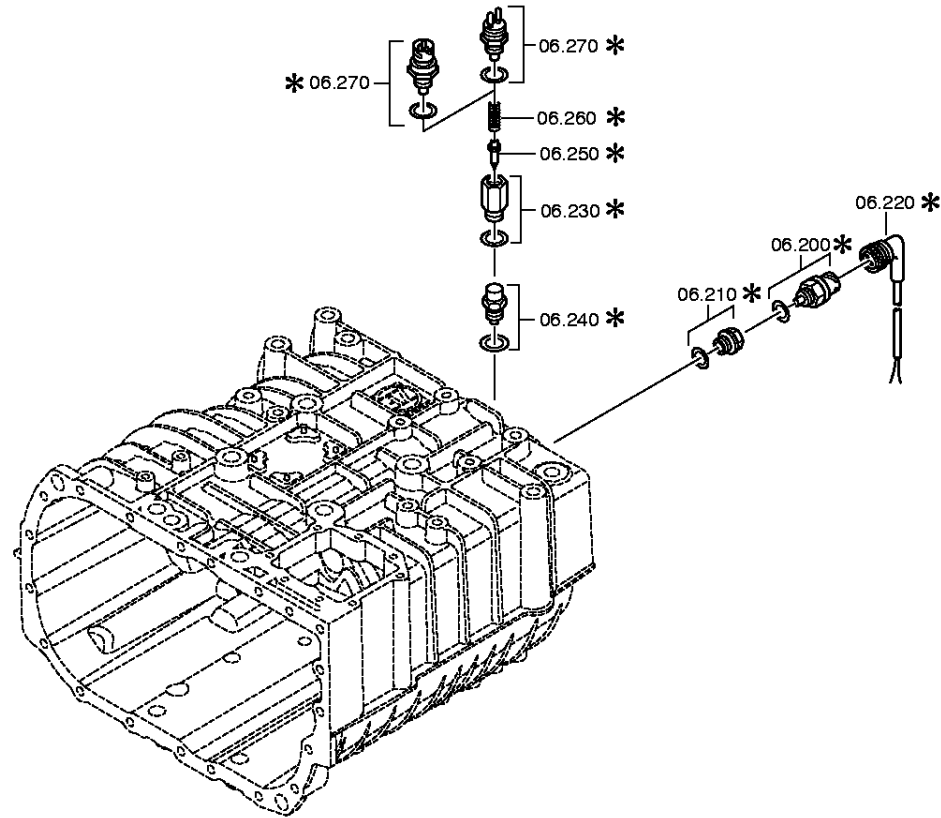


Plant

Page 2 from 2

Material number: 1290.055.130
Plate: 032.06.40-1
GEAR SHIFT SYSTEM

6 S 850 /
GEAR SHIFT SYSTEM



Plant

Page 1 from 1

Material number: 1290.055.130
Plate: 032.07.05-1
GEAR SHIFT HOUSING

6 S 850 /
GEAR SHIFT HOUSING



Bildtafel:
Figure: 032.07.05
Figure:
Figura:

je nach Stückistenausführung
depending on spec number
*
suivant la nomenclature
secondo la distinta base

