



КПП ZF

16S 109 (16S109)

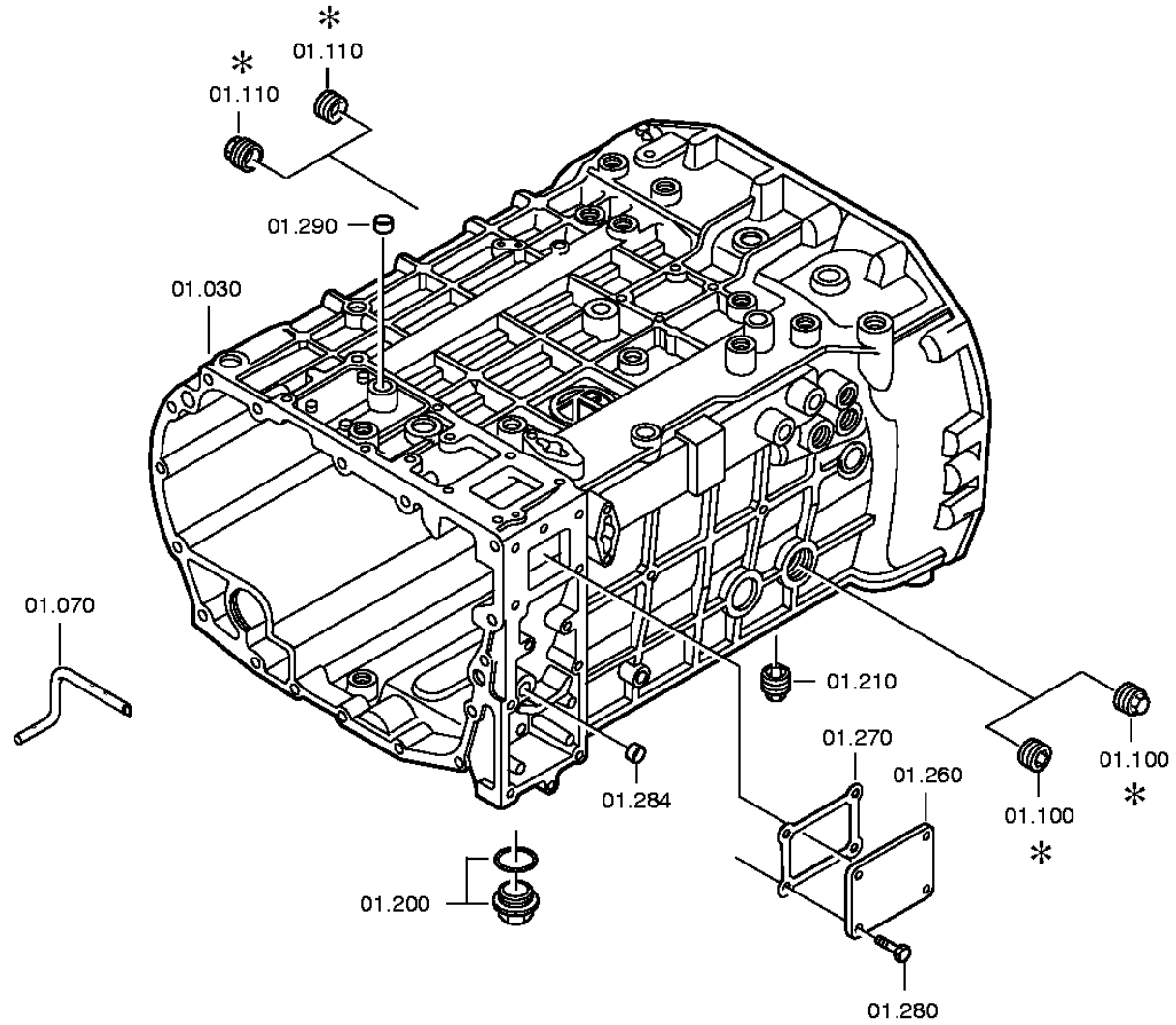
1310 050 026 (1310050026)

STEYR

Каталог запчастей

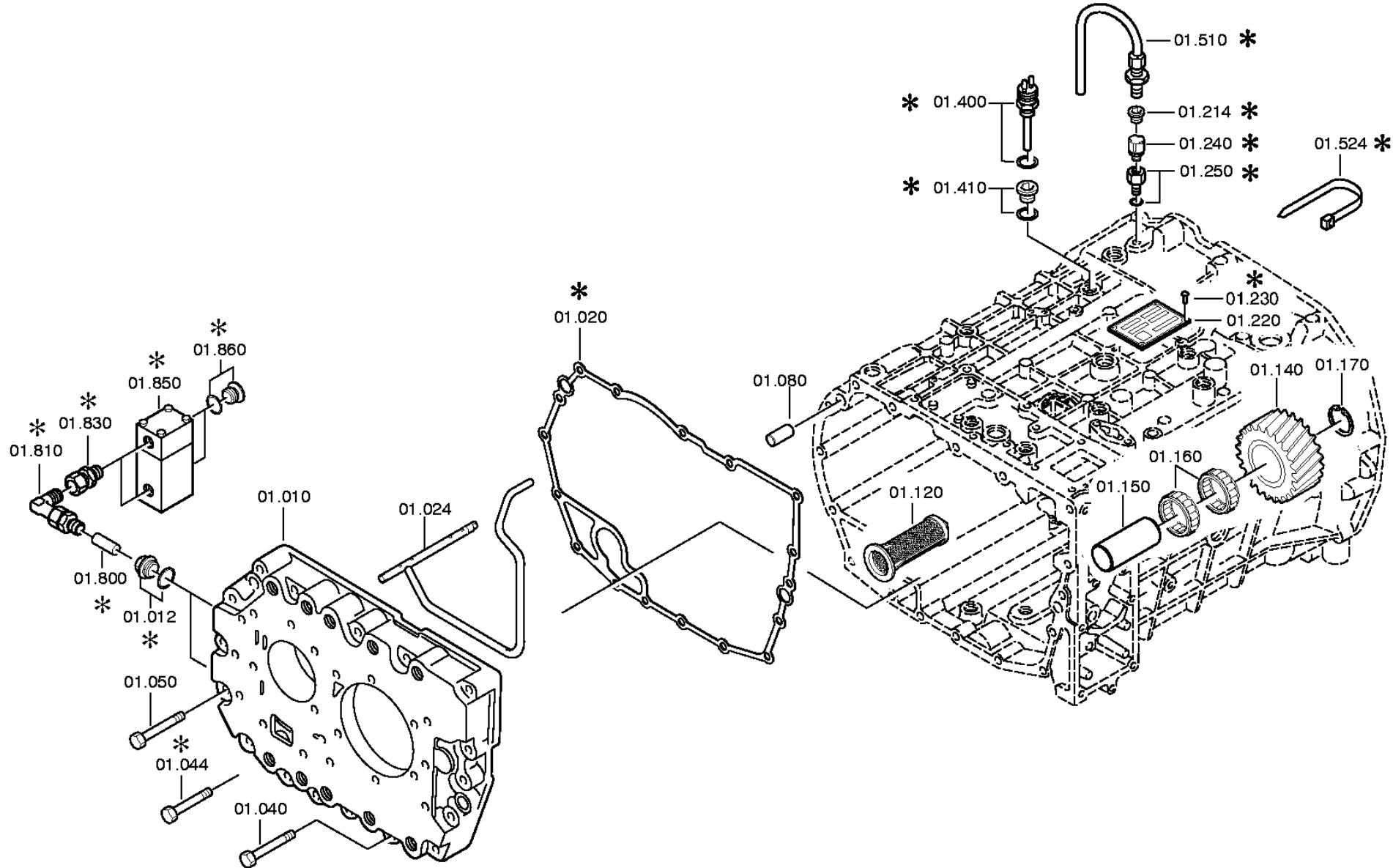
distinta base: 1304 050 026 16 S 109 / SG*LL*ANGEFL*DW-WL H-H / STEYR NUTZFAHRZEUGE AG
figura: 062.01.11 SCATOLA CAMBIO

* secondo la distinta base



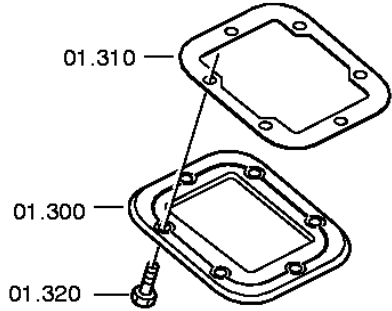
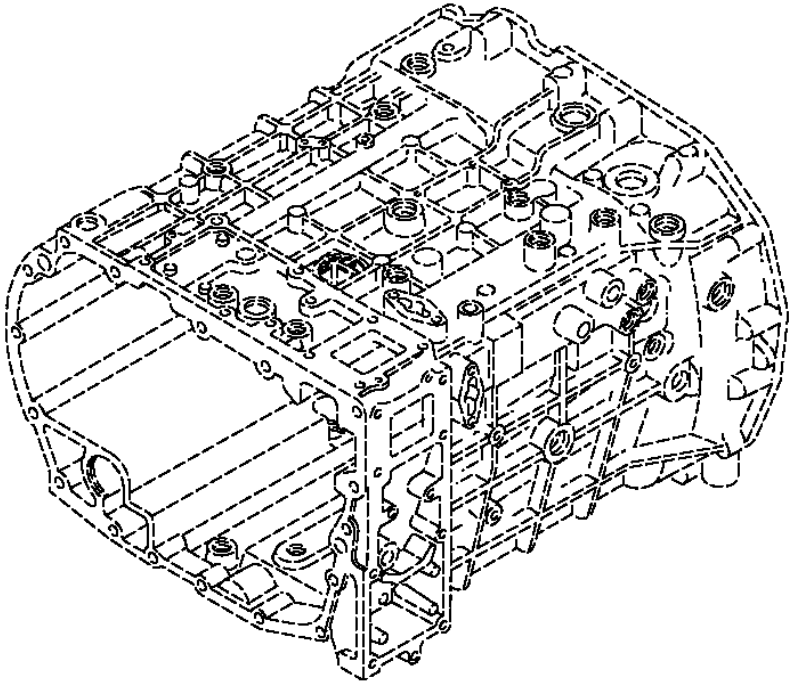
distinta base: 1304 050 026 16 S 109 / SG*LL*ANGEFL*DW-WL H-H / STEYR NUTZFAHRZEUGE AG
figura: 062.01.84 SCATOLA CAMBIO

* secondo la distinta base



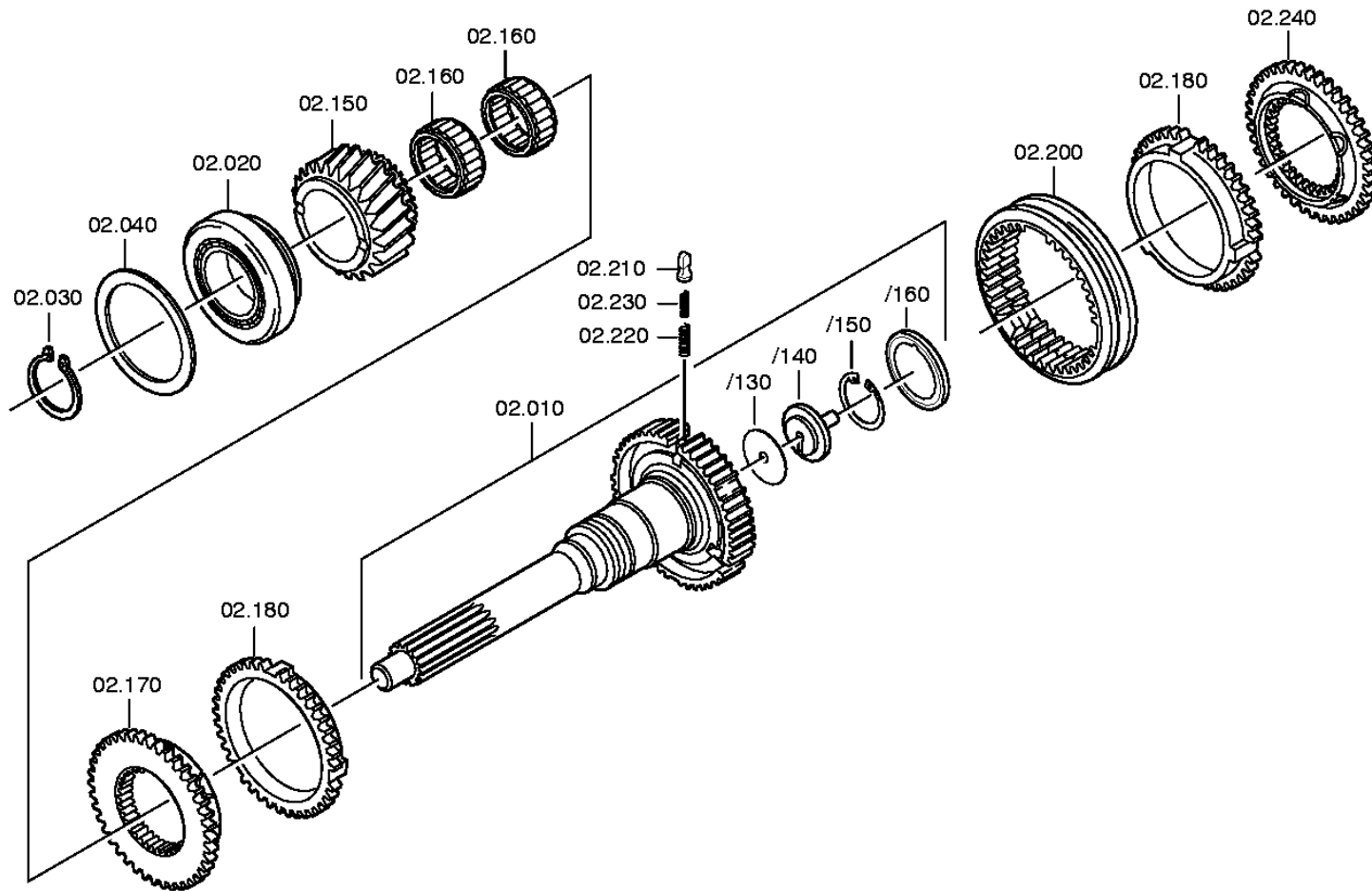
distinta base: 1304 050 026 16 S 109 / SG*LL*ANGEFL*DW-WL H-H / STEYR NUTZFAHRZEUGE AG
figura: 062.01.90 PARTI P. CHIUS.

* secondo la distinta base



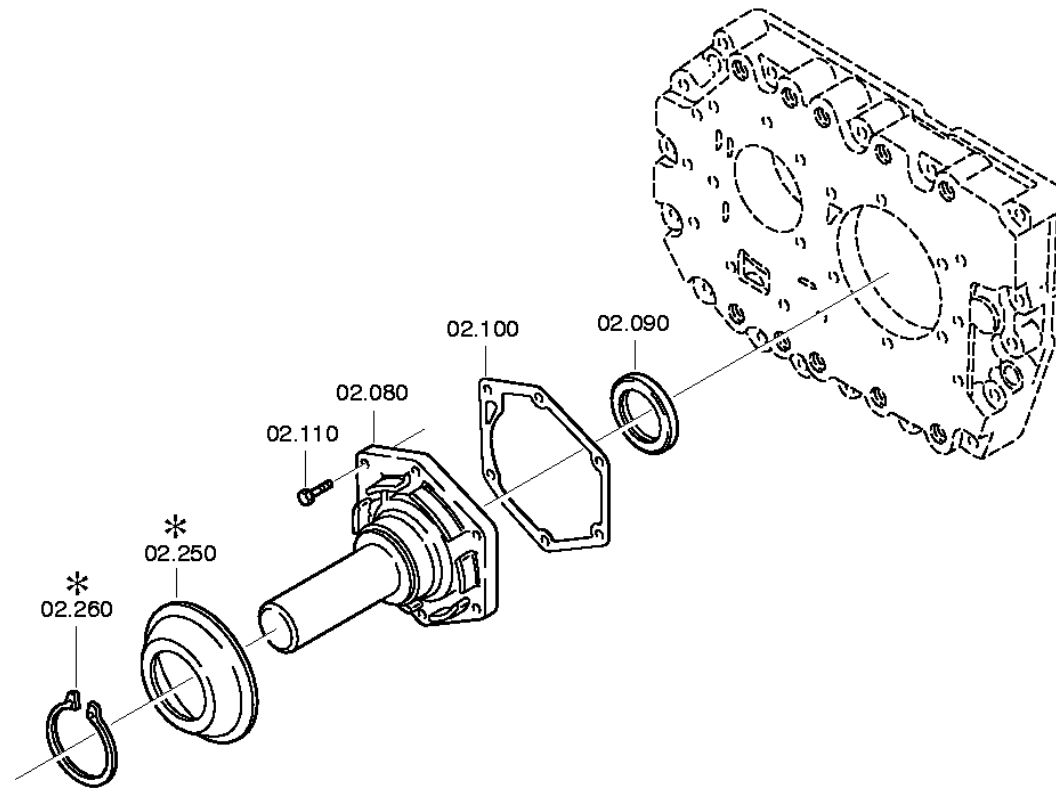
distinta base: 1304 050 026 16 S 109 / SG*LL*ANGEFL*DW-WL H-H / STEYR NUTZFAHRZEUGE AG
figura: 062.02.03 ALBERO ENTRATA

* secondo la distinta base



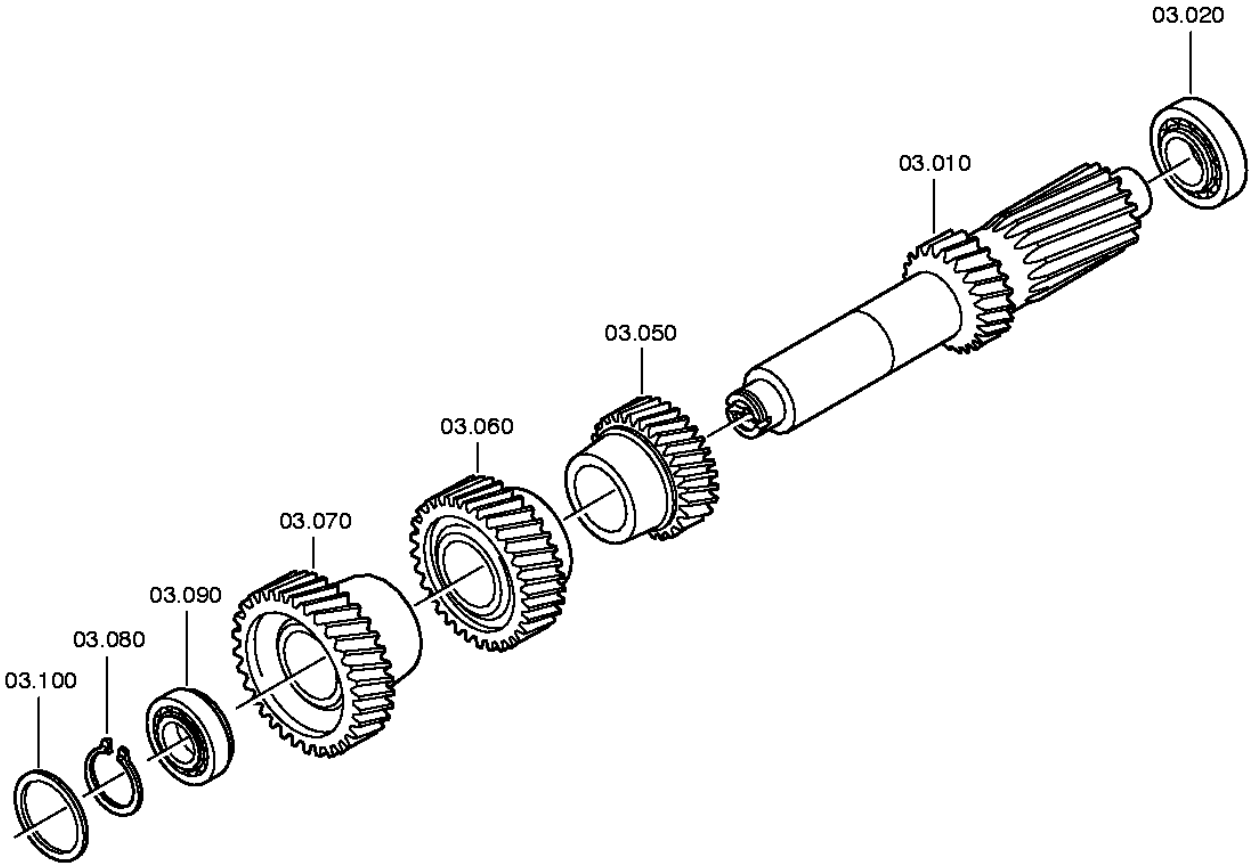
distinta base: 1304 050 026 16 S 109 / SG*LL*ANGEFL*DW-WL H-H / STEYR NUTZFAHRZEUGE AG
figura: 062.02.40 PIASTRA RACCORD

* secondo la distinta base



distinta base: 1304 050 026 16 S 109 / SG*LL*ANGEFL*DW-WL H-H / STEYR NUTZFAHRZEUGE AG
figura: 062.03.05 ALBERO RINVIO

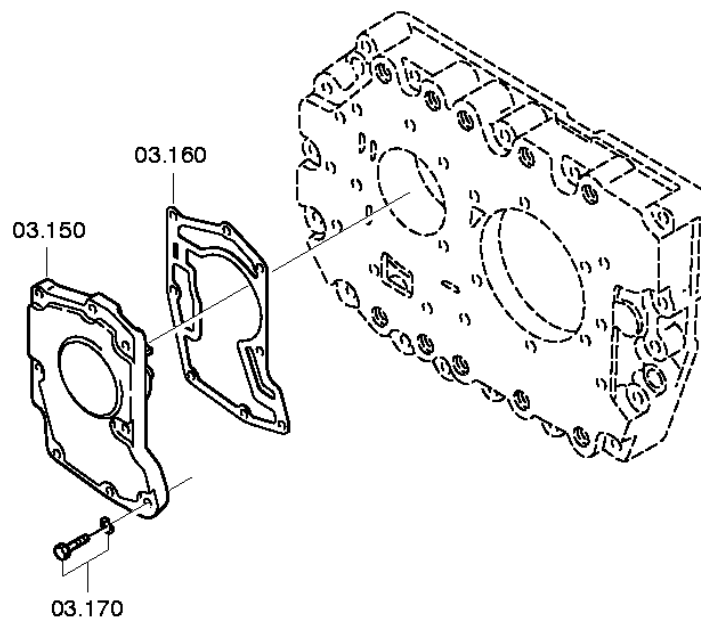
* secondo la distinta base



distinta base: 1304 050 026 16 S 109 / SG*LL*ANGEFL*DW-WL H-H / STEYR NUTZFAHRZEUGE AG

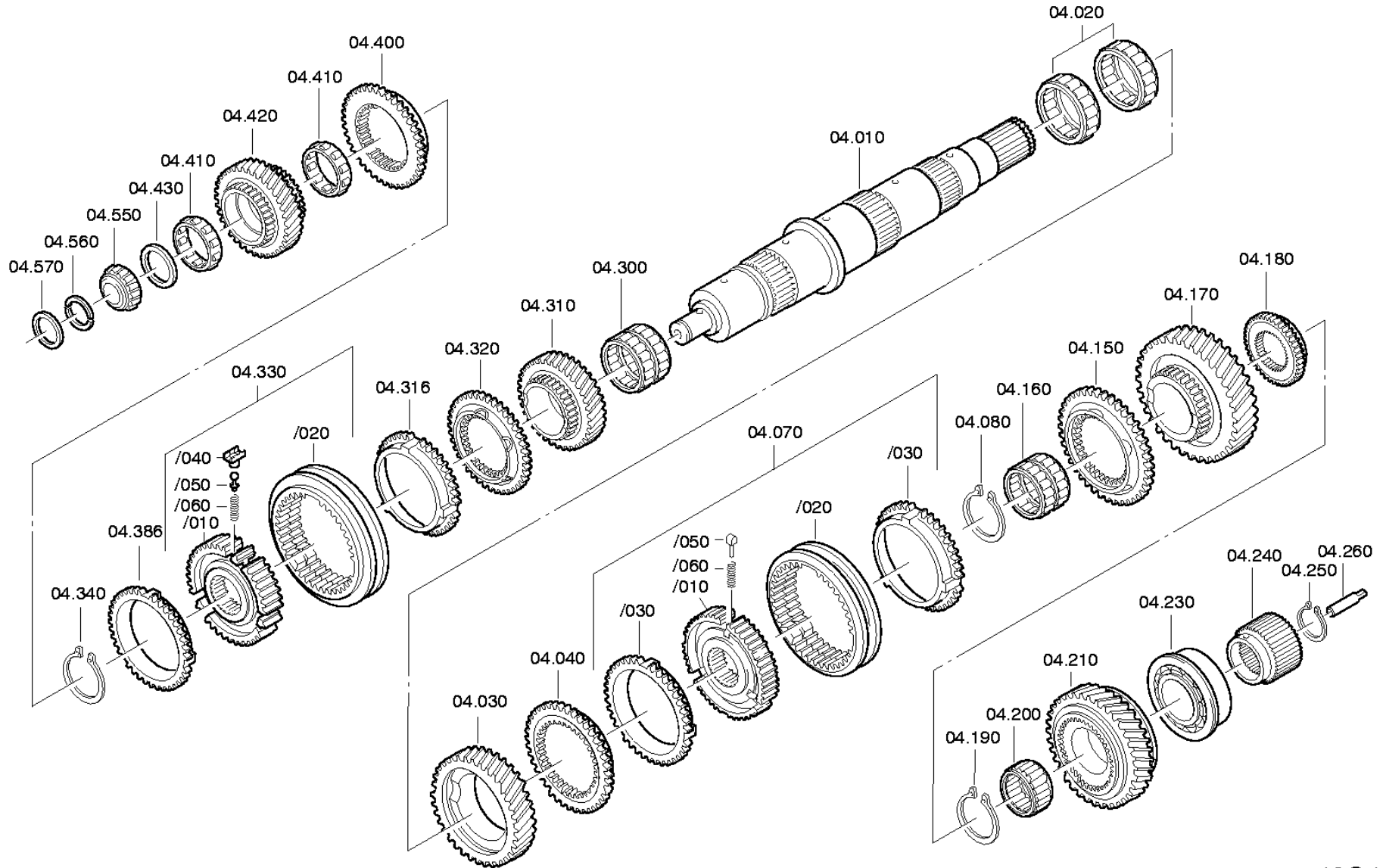
figura: 062.03.80 ALBERO RINVIO

* secondo la distinta base



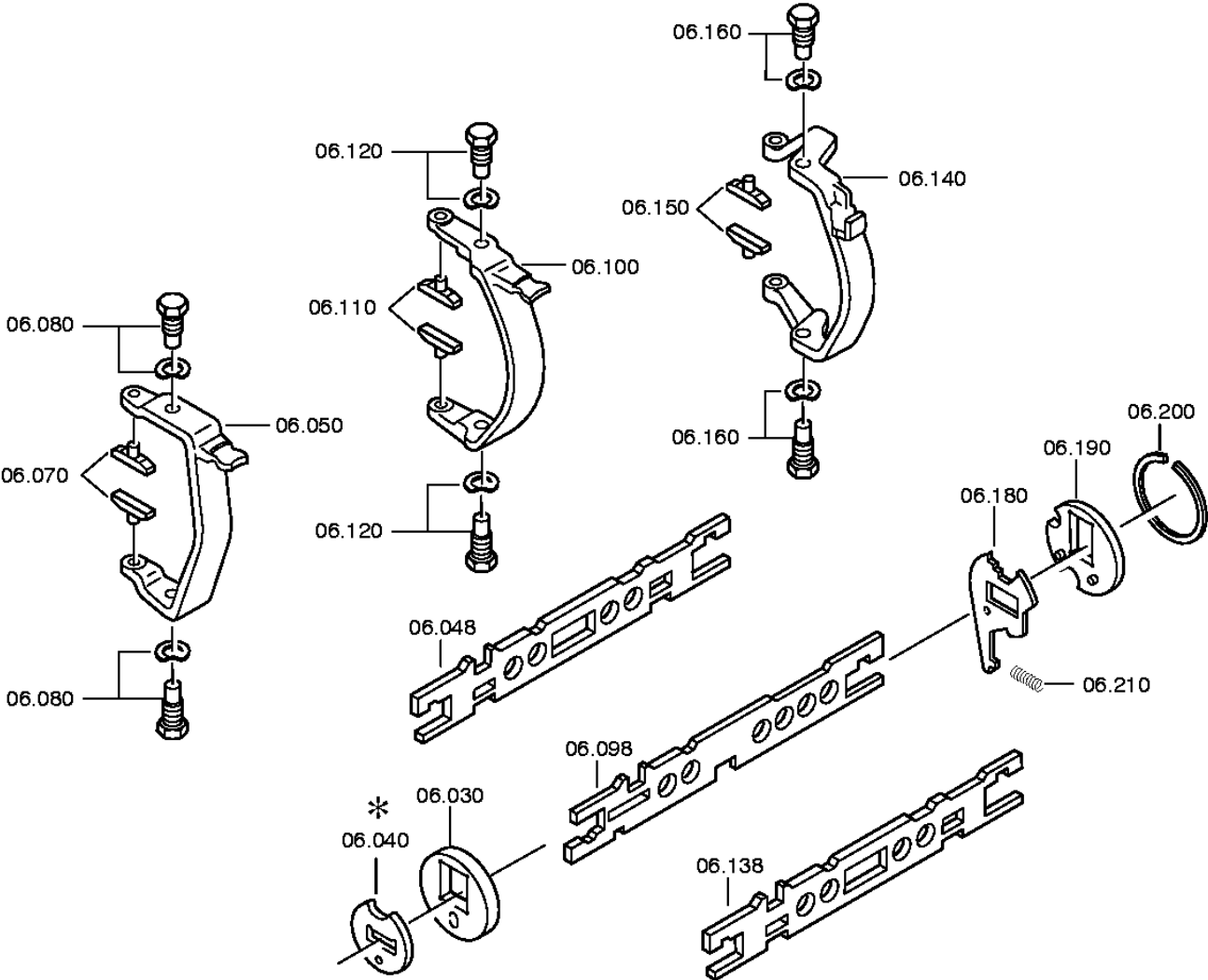
distinta base: 1304 050 026 16 S 109 / SG*LL*ANGEFL*DW-WL H-H / STEYR NUTZFAHRZEUGE AG
figura: 062.04.05 ALBERO PRIMARIO

* secondo la distinta base



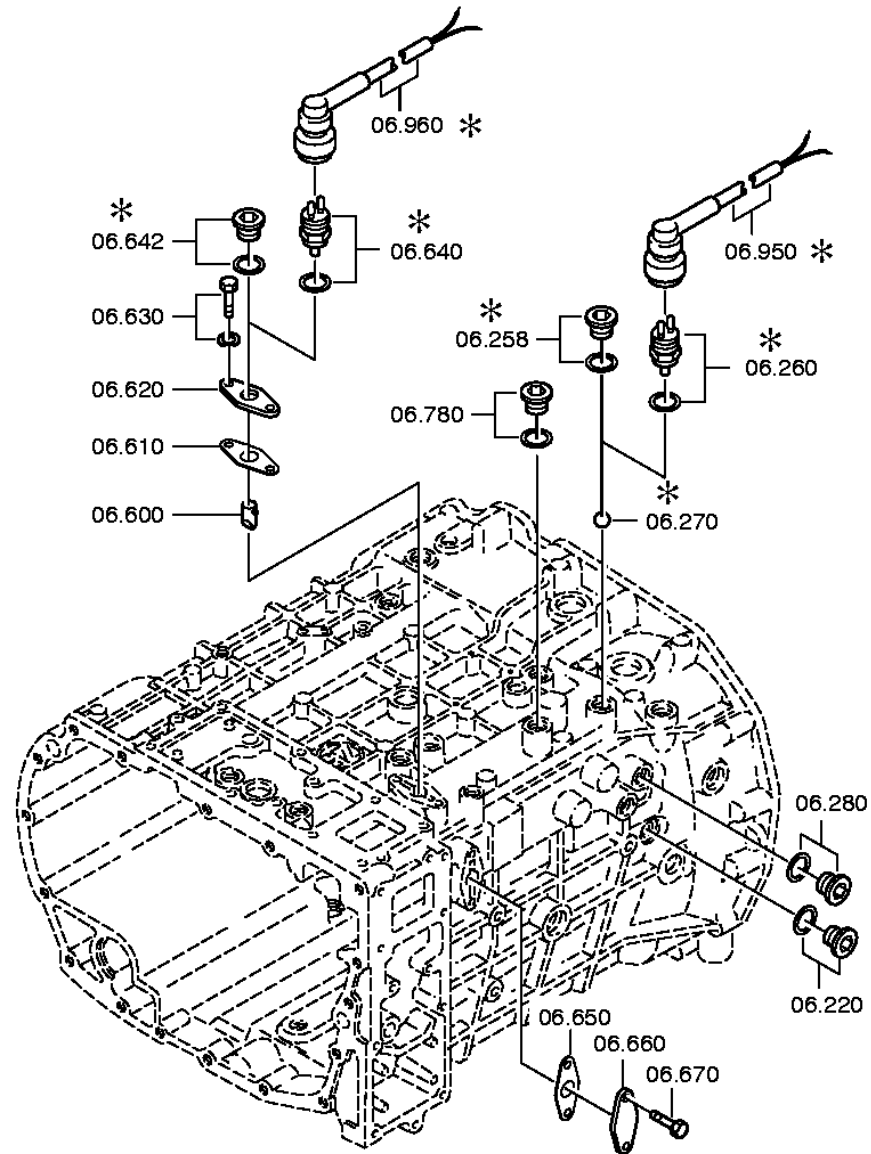
distinta base: 1304 050 026 16 S 109 / SG*LL*ANGEFL*DW-WL H-H / STEYR NUTZFAHRZEUGE AG
figura: 062.06.22 COMANDO

* secondo la distinta base



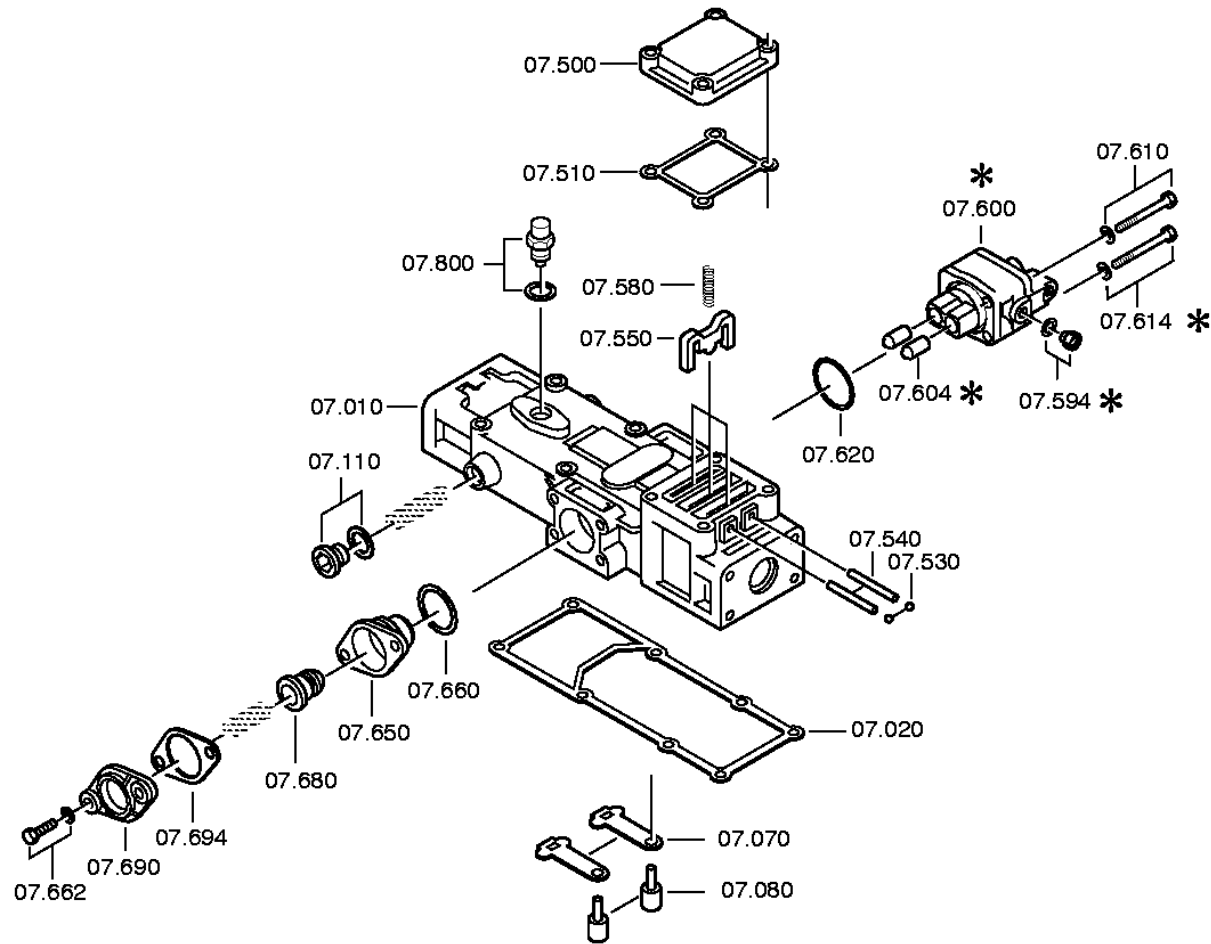
distinta base: 1304 050 026 16 S 109 / SG*LL*ANGEFL*DW-WL H-H / STEYR NUTZFAHRZEUGE AG
figura: 062.06.46 PARTIC.RACCORDO

* secondo la distinta base



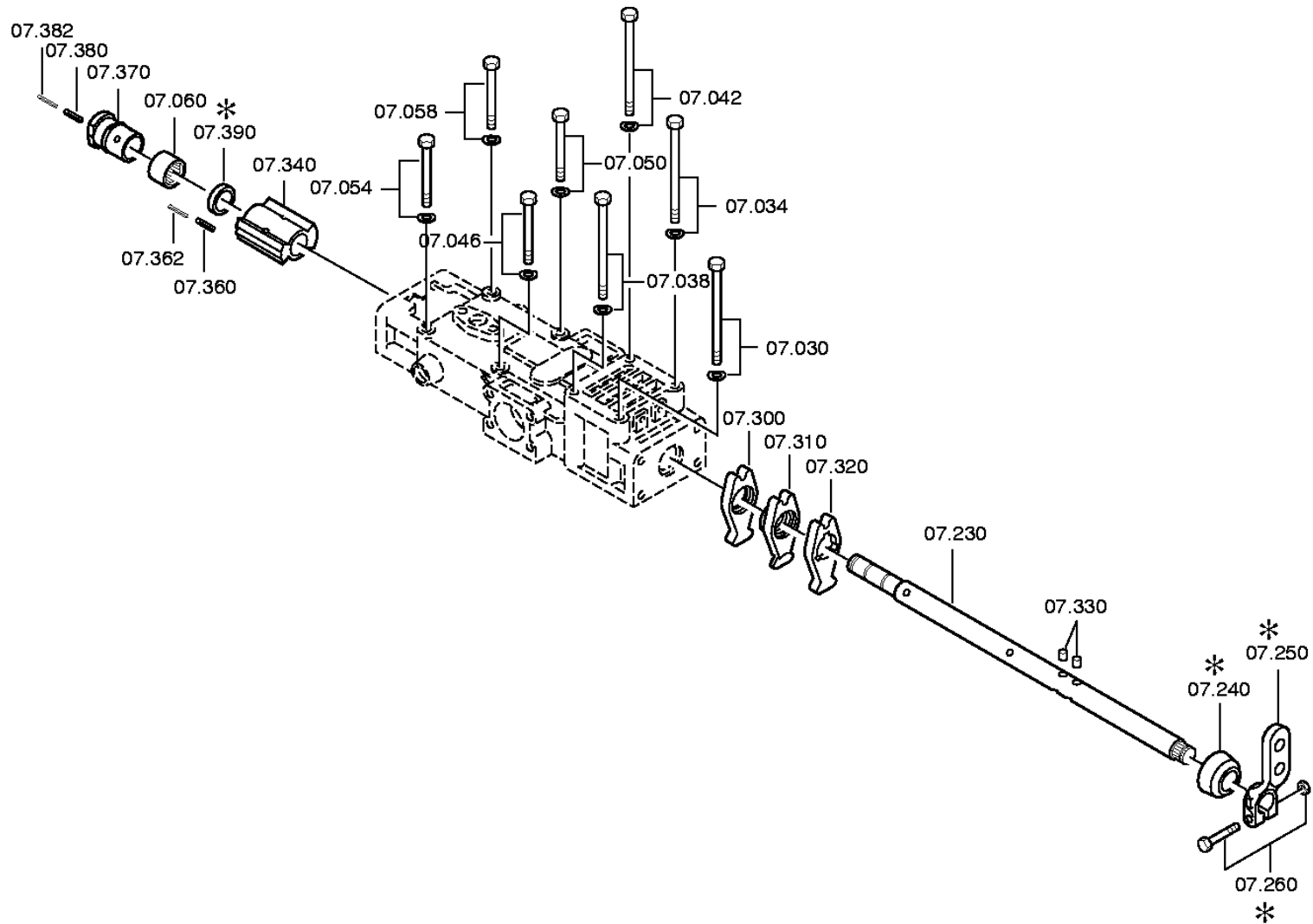
distinta base: 1304 050 026 16 S 109 / SG*LL*ANGEFL*DW-WL H-H / STEYR NUTZFAHRZEUGE AG
figura: 062.07.03 SCATOLA COMANDO

* secondo la distinta base



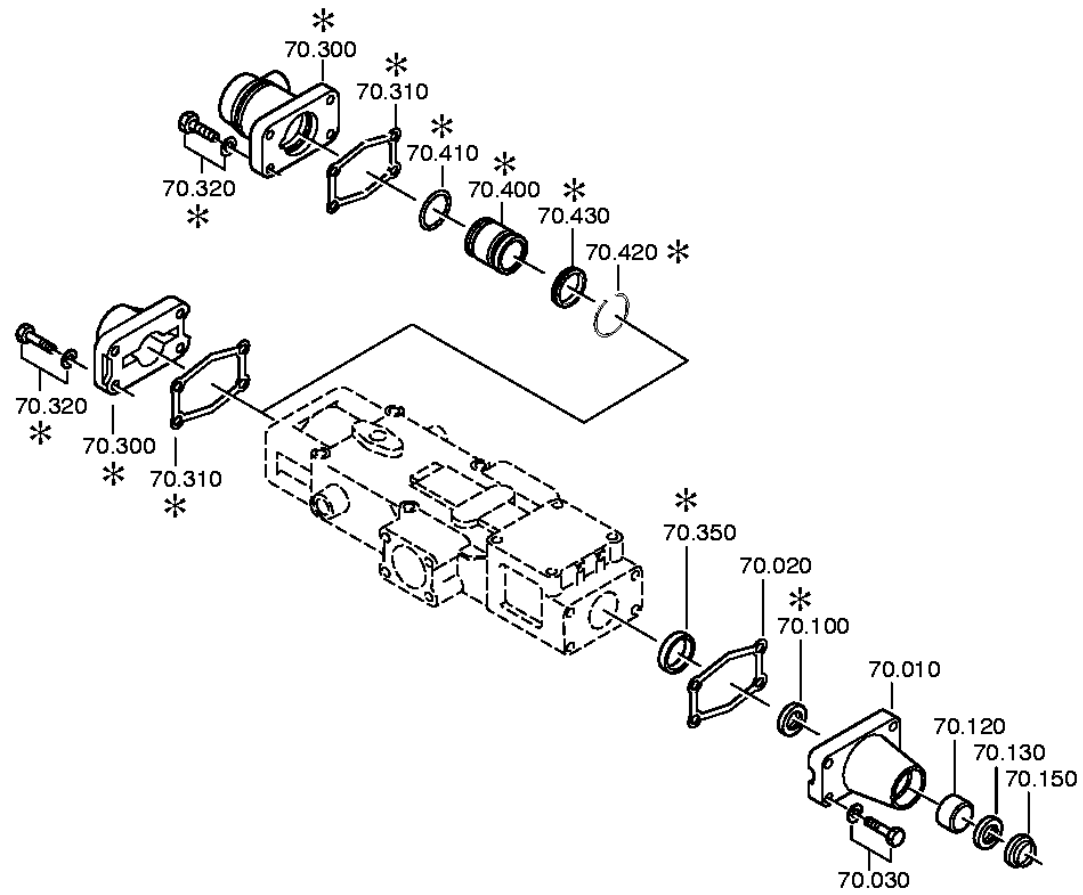
distinta base: 1304 050 026 16 S 109 / SG*LL*ANGEFL*DW-WL H-H / STEYR NUTZFAHRZEUGE AG
figura: 062.07.47 ALBERO COMANDO

* secondo la distinta base



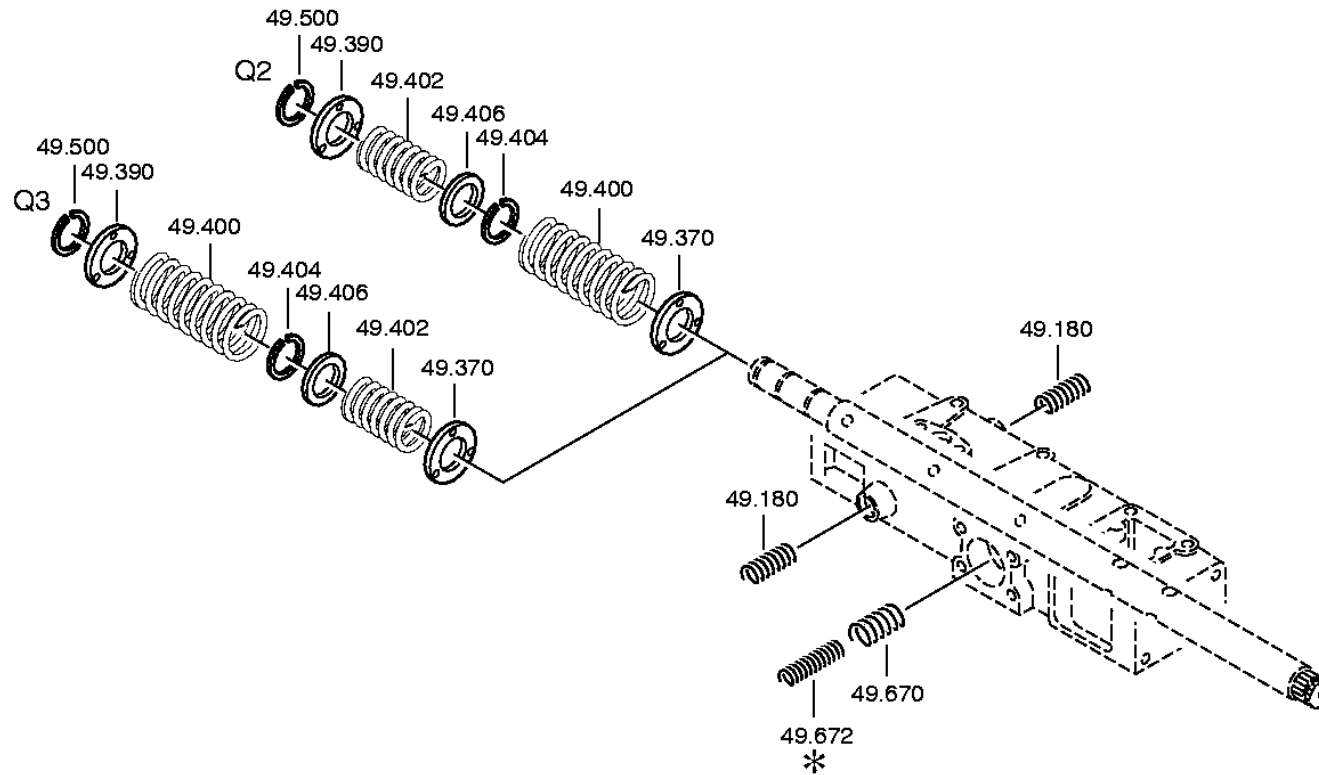
distinta base: 1304 050 026 16 S 109 / SG*LL*ANGEFL*DW-WL H-H / STEYR NUTZFAHRZEUGE AG
figura: 062.08.01 BRACCIO COMANDO

* secondo la distinta base



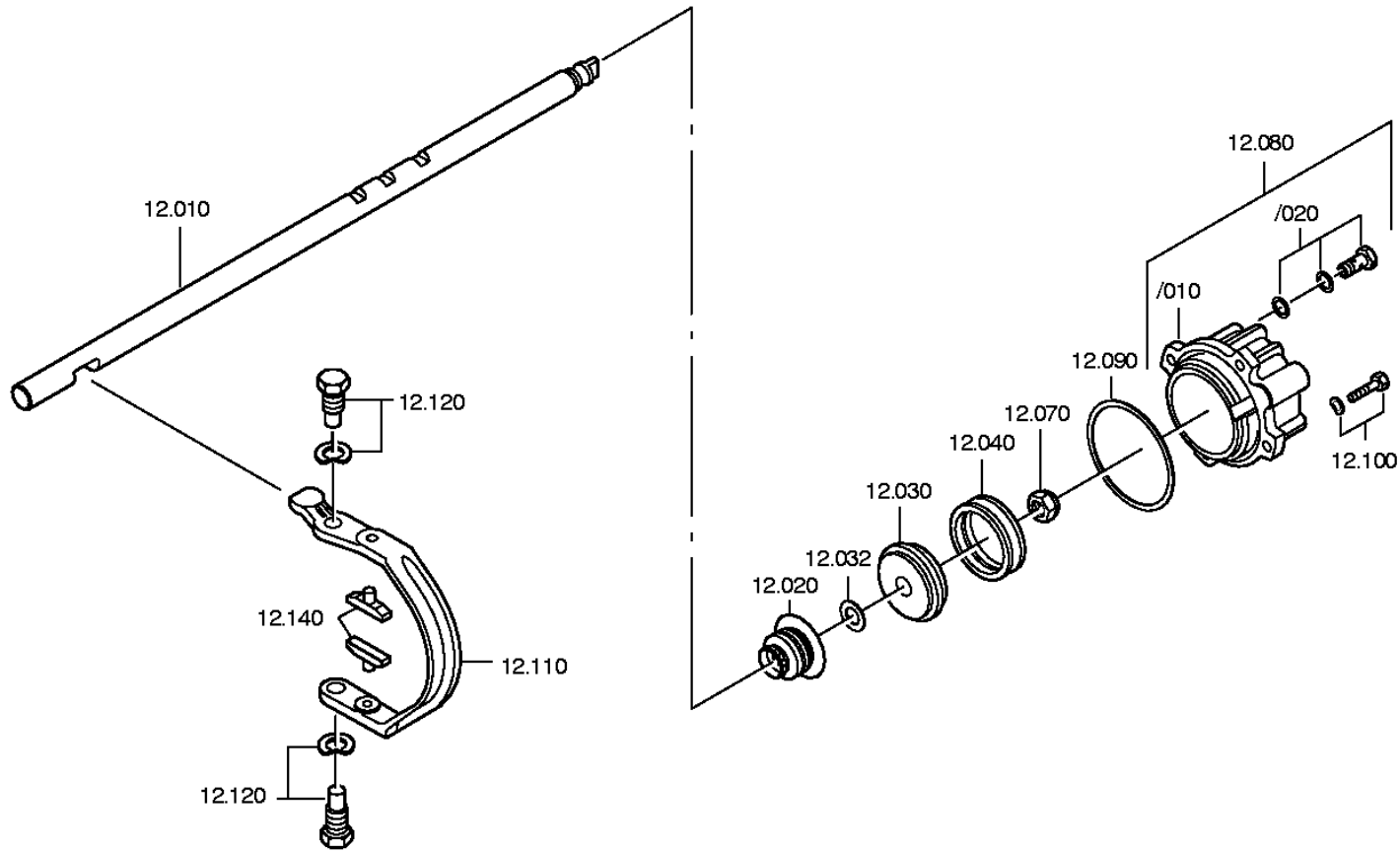
distinta base: 1304 050 026 16 S 109 / SG*LL*ANGEFL*DW-WL H-H / STEYR NUTZFAHRZEUGE AG
figura: 062.12.05 GRUPPO MOLLE

* secondo la distinta base



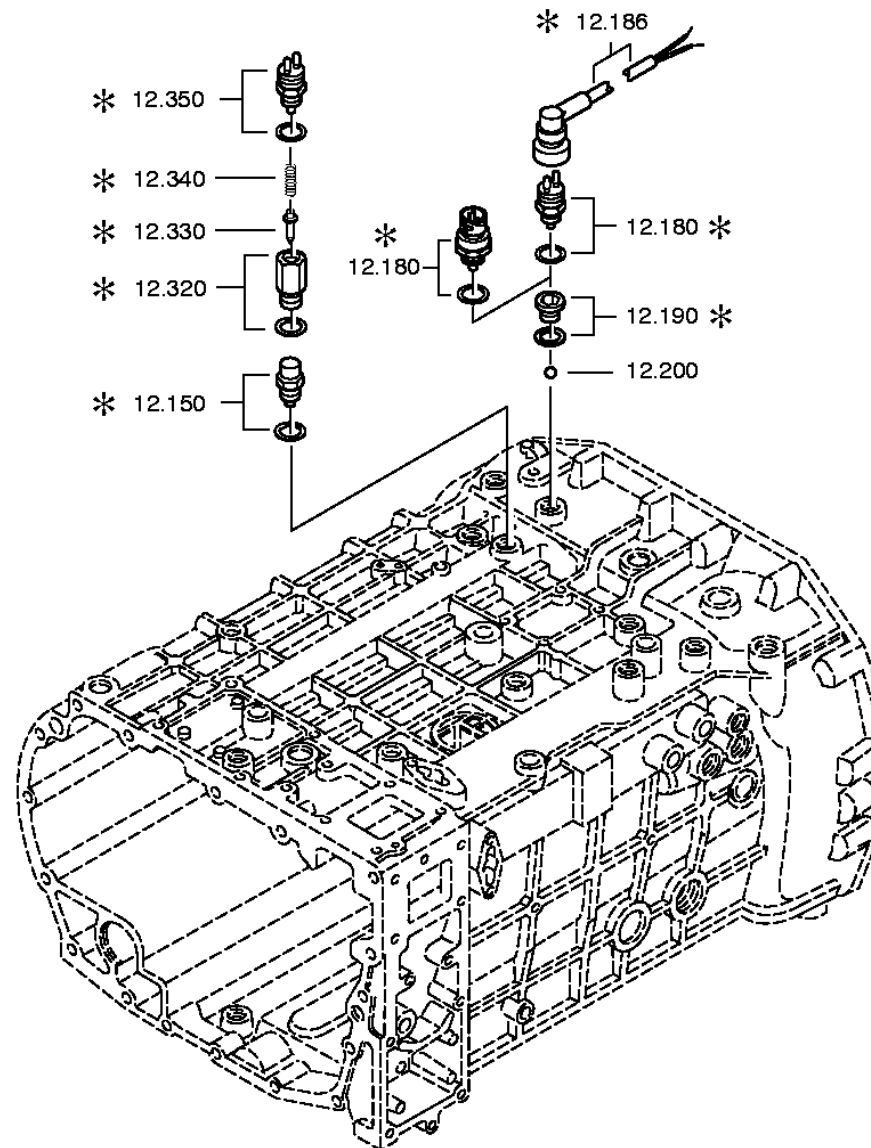
distinta base: 1304 050 026 16 S 109 / SG*LL*ANGEFL*DW-WL H-H / STEYR NUTZFAHRZEUGE AG
figura: 062.40.01 COMANDO GV

* secondo la distinta base



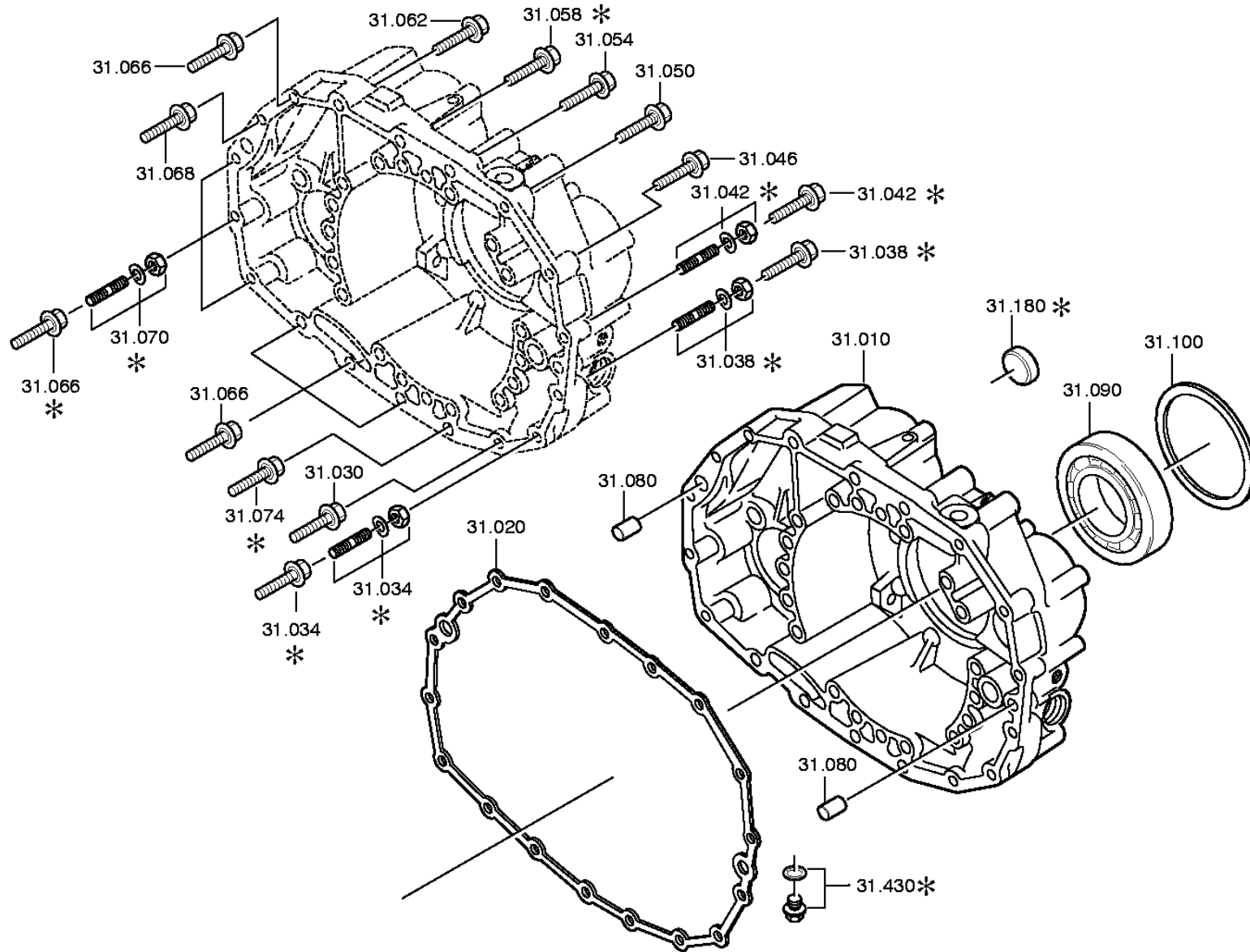
distinta base: 1304 050 026 16 S 109 / SG*LL*ANGEFL*DW-WL H-H / STEYR NUTZFAHRZEUGE AG
figura: 062.40.40 PARTIC.RACCORDO

* secondo la distinta base



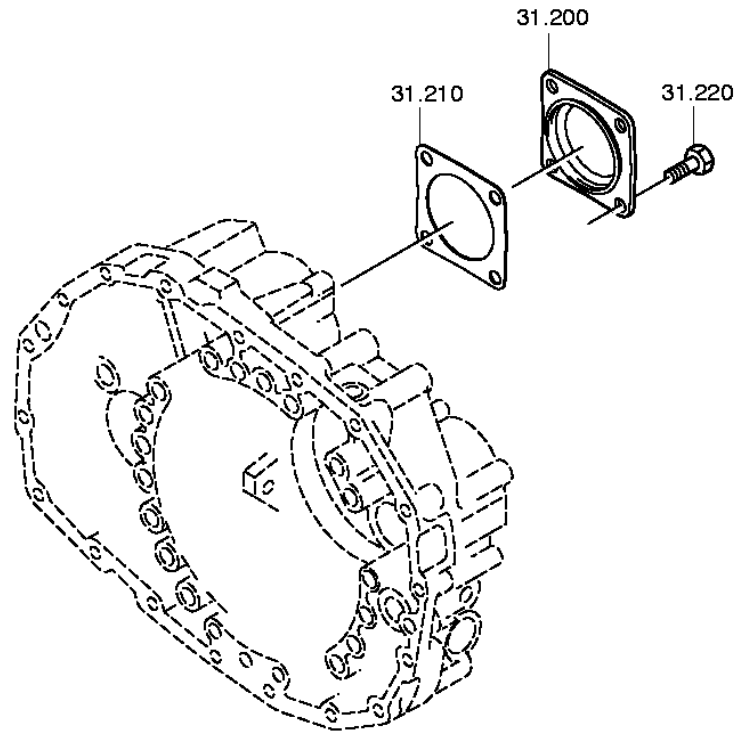
distinta base: 1304 050 026 16 S 109 / SG*LL*ANGEFL*DW-WL H-H / STEYR NUTZFAHRZEUGE AG
figura: 062.43.02 SCATOLA GP

* secondo la distinta base



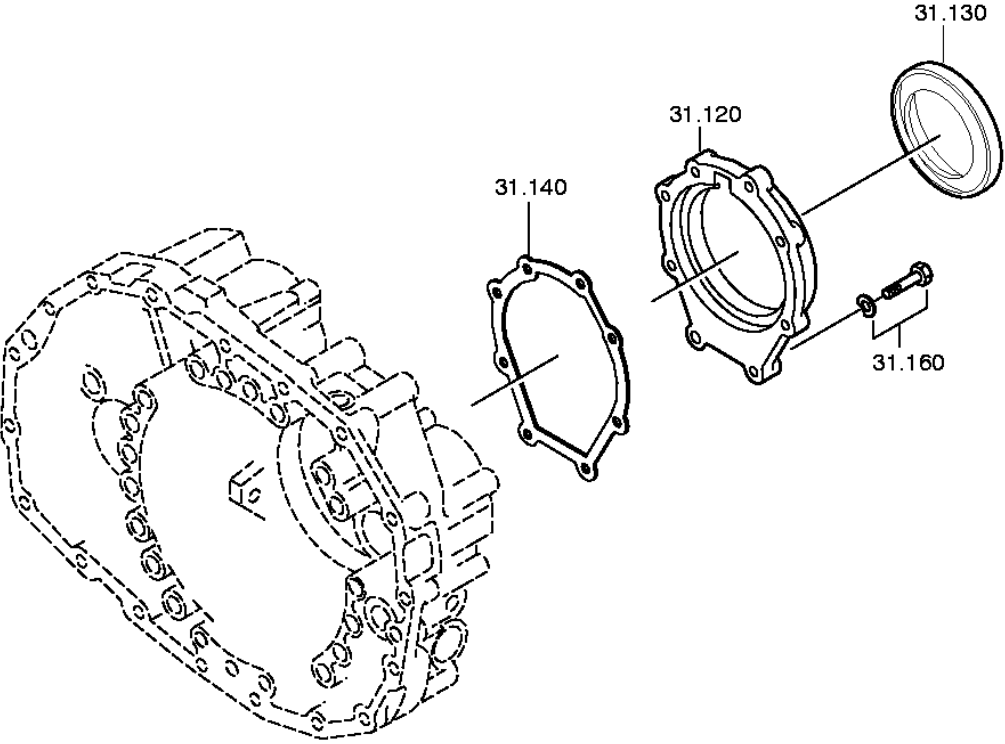
distinta base: 1304 050 026 16 S 109 / SG*LL*ANGEFL*DW-WL H-H / STEYR NUTZFAHRZEUGE AG
figura: 062.43.40 PARTI P. CHIUS.

* secondo la distinta base



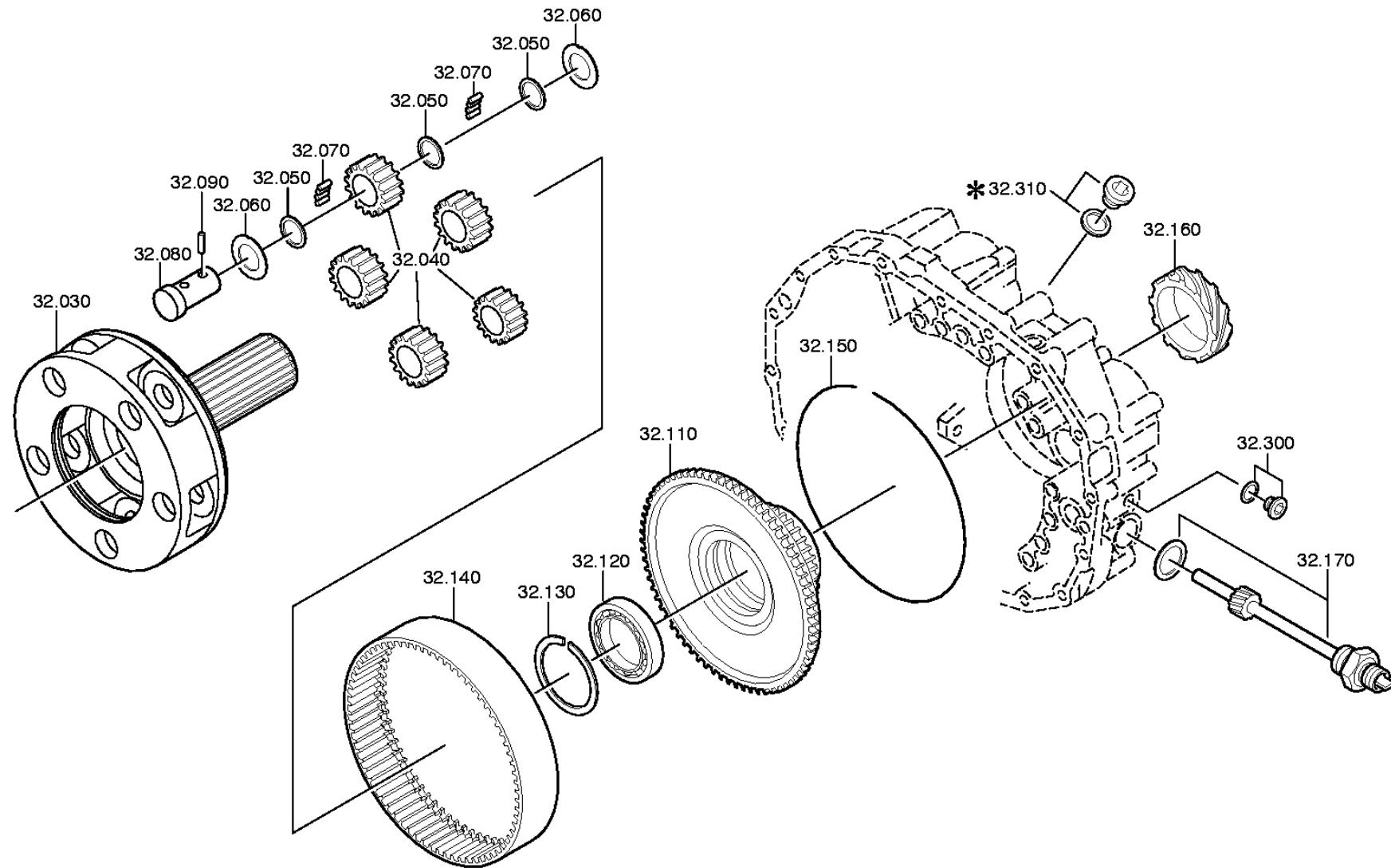
distinta base: 1304 050 026 16 S 109 / SG*LL*ANGEFL*DW-WL H-H / STEYR NUTZFAHRZEUGE AG
figura: 062.43.41 COPERCHIO

* secondo la distinta base



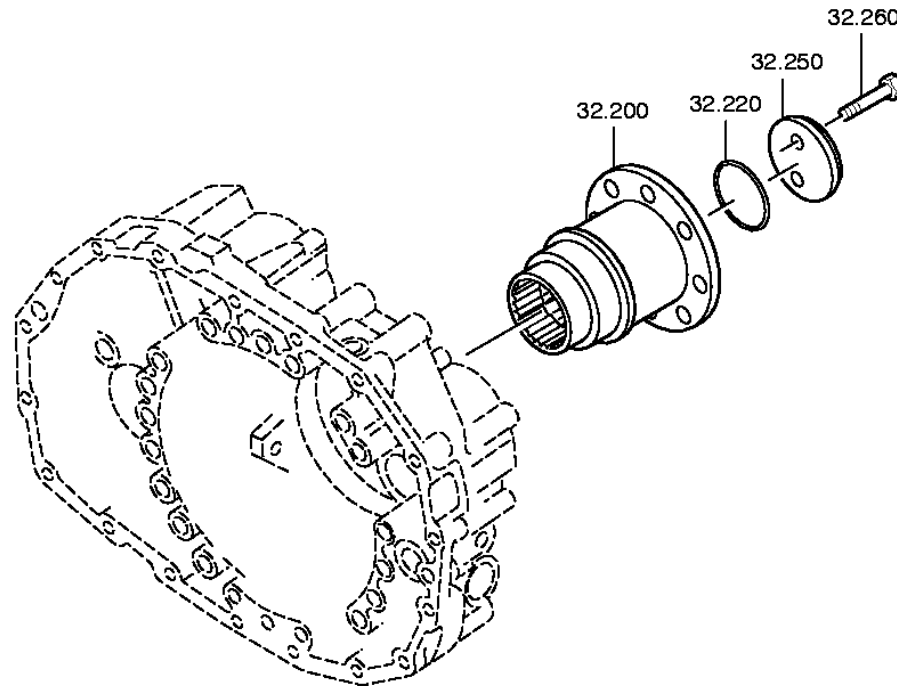
distinta base: 1304 050 026 16 S 109 / SG*LL*ANGEFL*DW-WL H-H / STEYR NUTZFAHRZEUGE AG
figura: 062.44.05 RUOTISMO EPICIC

* secondo la distinta base



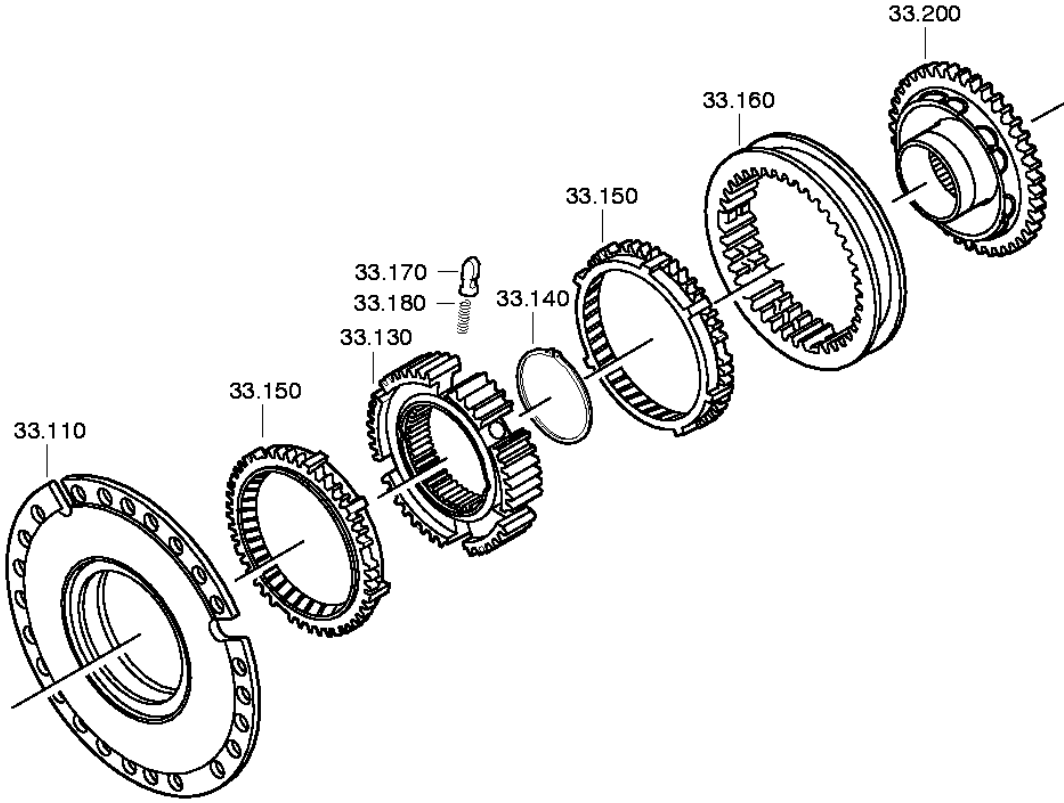
distinta base: 1304 050 026 16 S 109 / SG*LL*ANGEFL*DW-WL H-H / STEYR NUTZFAHRZEUGE AG
figura: 062.44.43 RUOTISMO EPICIC

* secondo la distinta base



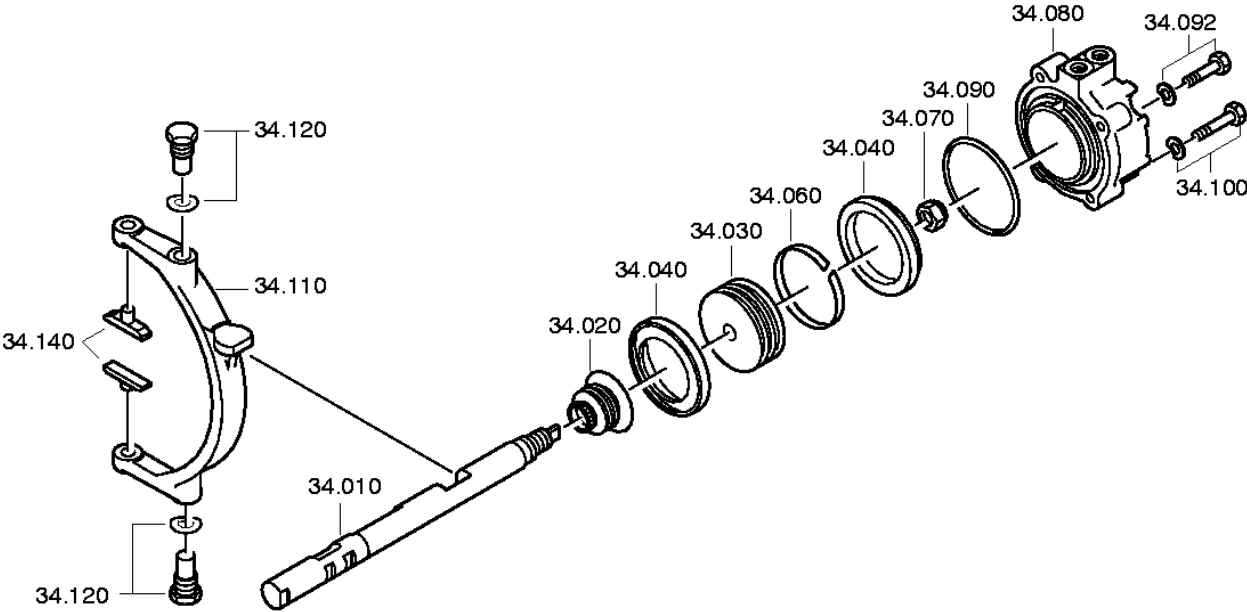
distinta base: 1304 050 026 16 S 109 / SG*LL*ANGEFL*DW-WL H-H / STEYR NUTZFAHRZEUGE AG
figura: 062.45.01 SINCRONIZZATORE

* secondo la distinta base



distinta base: 1304 050 026 16 S 109 / SG*LL*ANGEFL*DW-WL H-H / STEYR NUTZFAHRZEUGE AG
figura: 062.46.01 COMANDO GP

* secondo la distinta base



distinta base: 1304 050 026 16 S 109 / SG*LL*ANGEFL*DW-WL H-H / STEYR NUTZFAHRZEUGE AG
figura: 062.46.40 PARTIC.RACCORDO

* secondo la distinta base

