



Spare Parts Catalog

16 S 181

Material number: 1316.055.009

Current date: 03.02.2015

ZF Friedrichshafen AG
Hauptverwaltung
80038 Friedrichshafen
Deutschland

Telefon: +49 7541 77-0

Telefax: +49 7541 77-908000

www.zf.com

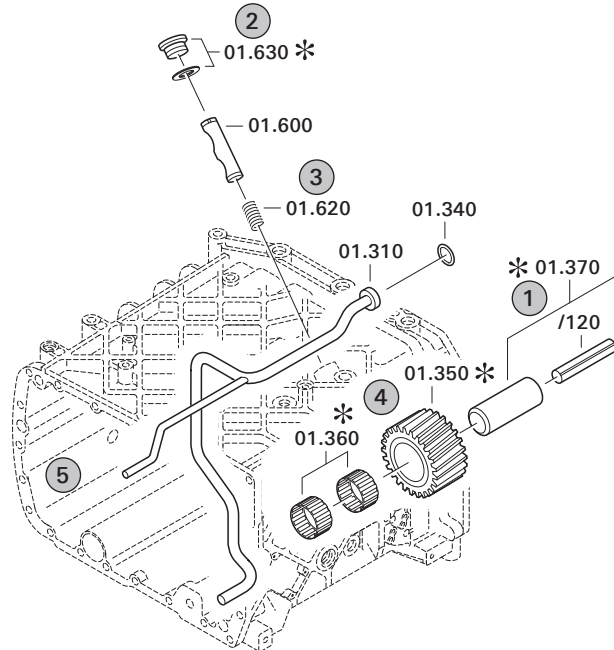
zuständiges Werk:
Friedrichshafen

Notes relating to the spare parts catalog

Setup of the spare parts catalog

- Cover sheet
- Technical Cover (only in SDM print)
- Overview of figures
- Figure
- Associated parts list
- Next figure
- Associated parts list
- ...

Figure and parts list



Overview of figures

Bildtafel Figure	Sachnummer Product number	Benennung (Description)	Technische Info Technical info	Description (Benennung)	Menge Quantity	Einheit Unit
068.08.17	1316.170.001	AUSLEGER	WL	SHIFT TURRET	1	Stk
068.08.06	1316.170.031	DECKEL	WL*H-H*VM	COVER	1	Stk
068.08.14	1316.170.808	DECKEL	WL*AUSL+GEH*H-H*HF160N	COVER	1	Stk
08	1316.170.441	ANSCHLUSSTEILE	WL*NG-VORB*RG-SCHL*168N*BAJONETT	CONNECTING PARTS	1	Stk

The "gap" indicates that there is no separate graphics panel (poster) for this assembly
The parts of this assembly are shown with the same mid-section number on the figure

1 Positions and subpositions

Pos.	Sachnummer Product number	Benennung (Description)	Technische Info Technical info	Description (Benennung)	Menge Quantity	Einheit Unit
0370	1315.201.054	RUECKLAUFBOLZEN	KPL.16S151*SG*L= 79	REV.IDLER SHAFT	1	Stk
/0120	0631.329.293	SPANNSTIFT		SLOT. PIN	1	Stk

Positions marked with "/" are the individual items of a completion
For example: Position 0370 contains a centering pin with the position /0120

2 Combinations with standardized parts

Pos.	Sachnummer Product number	Benennung (Description)	Technische Info Technical info	Description (Benennung)	Menge Quantity	Einheit Unit
0630		VERSCHL.SCHR.		SCREW PLUG	1	Stk
	0636.302.067	VERSCHL.SCHR.		SCREW PLUG	1	Stk
	0634.801.249	DICHTRING	A 26 X 31	SEALING RING	1	Stk

The parts list shows the components included in the combination of standardized parts

3 Depiction of position/item number on the figure and in the parts list

01.620 - on the figure 01 relates to the assembly in which the position is included. Due to program-related reasons, it is shown on the figure.

0620 - in the parts list

Pos.	Sachnummer Product number	Benennung (Description)	Technische Info Technical info	Description (Benennung)	Menge Quantity	Einheit Unit
0620	0732.040.736	DRUCKFEDER		COMPRESSION SPRING	1	Stk

4 *-Positions

Positions marked with an * are optional i.e. inclusion in the parts list is not mandatory.
The following note is shown on the figure

je nach Stücklistenausführung
depending on spec. number
*
suivant la nomenclature
secondo la distinta base

5 Parts, dotted display

Parts with dotted display on the figure are only used for orientation of other parts



Pos.	Information	Amendment number
001	Use case -----	
002	Customer DAF TRUCKS N.V.	
003	City EINDHOVEN	
004	DUNS 41-579-9402	
005	Vehicle / Apparatus -----	
006	Sales Name F85	
007	Manufacturer DAF TRUCKS N.V.	
008	Engineering Name	
009	Product Use TRUCK	
010	Vehicle/Hardware Type TRAILER TRUCK	
011	SOP	
012	Engine	
013	Sales Designation	
014	Manufacturer DAF TRUCKS N.V.	
015	Eng.Displ.	
016	Cylinder	
017	Nom. power 315 kW	
018	RPM at nom. power 2000 1/min	
019	Nom. torque 1900 Nm	
020	RPM at nom. torque 1500 1/min	
021	Classification use case -----	
024	TOTAL NUMBER OF WHEELS 4	
025	NUMBER OF DRIVING WHEELS 2	
026	DYNAMIC TYRE RADIUS 525 mm	
027	REAR AXLE RATIO 3.31	
032	PERMISS.GROSS COMBIN.WEIGHT 44 t	
033	Product description -----	
034	INSTALLATION POS TRANSMISSION HORIZONTAL LEFT	
035	TRANSMISSION ATTACHMENT FLANGE-MOUNTED	
036	RATIO, BOTTOM GEAR 16.41	
037	RATIO, TOP GEAR 1	
038	RATIO, 1ST GEAR 16.41	
039	RATIO, 2ND GEAR 13.8	



Pos.	Information	Amendment number
040	RATIO, 3RD GEAR 11.28	
041	RATIO, 4TH GEAR 9.49	
042	RATIO, 5TH GEAR 7.76	
043	RATIO, 6TH GEAR 6.53	
044	RATIO, 7TH GEAR 5.43	
045	RATIO, 8TH GEAR 4.57	
046	RATIO, 9TH GEAR 3.59	
047	RATIO, 10TH GEAR 3.02	
048	RATIO, 11TH GEAR 2.47	
049	RATIO, 12TH GEAR 2.08	
050	RATIO, 13TH GEAR 1.7	
051	RATIO, 14TH GEAR 1.43	
052	RATIO, 15TH GEAR 1.19	
053	RATIO, 16TH GEAR 1	
054	RATIO, 1ST GEAR REVERSE 15.36	
055	RATIO, 2ND GEAR REVERSE 12.92	
056	SET OF RATIOS DG	
057	RATIO RANGE BASIC DG	
058	NUMBER OF PLANETARY GEARS 5	
059	RATIO PLANETARY GEAR SET 4.565	
060	VER. SPLINE PLANETARY GEAR SET OBLIQUE TOOTHING	
061	DESIGN, SHIFT SYSTEM TURNING SHAFT	
062	POSITION, GEAR SHIFT SYSTEM HORIZONTAL LEFT	
063	DESIGN, SHIFT PATTERN UEH	
064	VERSION SHIFT SUPPORT WITHOUT GROOVE	
065	VERSION ACTUATION SHIFT SYSTEM MECHANICAL	
070	DESIGN DOWNSHIFT GATE INTERLOCK AIR CONN.9 O/CLOCK	
078	DESIGN, THROTTLE, CUT-OFF VALVE D=2.00	
079	DESIGN AIR CONNECT. CUT-OFF VALVE F	
080	ASSEMBLY NOTE CUT-OFF VALVE CUT-OFF VALVE	
083	SELECTION PATTERN VARIANT GEAR SHIFT PATTERN 1	
084	ATTACHM.POS. DEVIATION LHD/R	
086	DESIGN, SEPARATING CLUTCH FULL-SYNCHRONIZED	



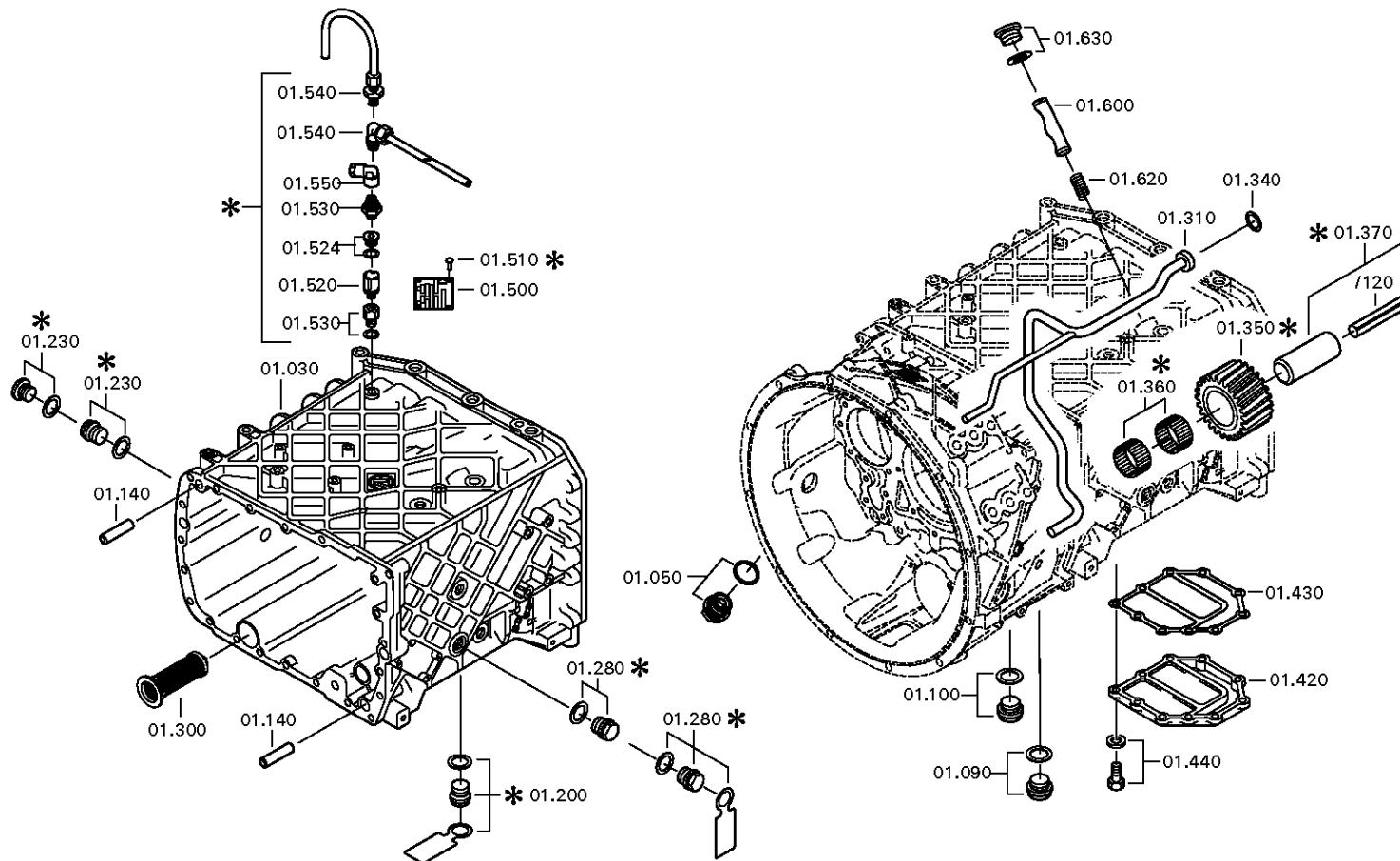
Pos.	Information	Amendment number
087	VERSION OF SYNCHRONIZER 1 1.+2.GEAR DK-SYNCHRONIZATION	
088	VERSION OF SYNCHRONIZER 2 3.+4.GEAR BK-SYNCHRONIZATION	
089	REFERENCE LENGTH INPUT SHAFT 109 mm	
090	STANDARD TYPE INPUT SHAFT SAE	
091	NUMBER OF WEDGES INPUT SHAFT 10	
092	VERSION OF INPUT SHAFT FORM C	
093	NOMINAL DIAMETER INPUT SHAFT 2 in	
094	DIAMETER, JOURNAL, INPUT SHAFT 25 mm	
095	TYPE FIT SPIGOTS INPUT SHAFT F7	
096	VER. BEAR. SPIGOTS INPUT SHAFT TAPER ROLLER	
097	LENGTH, INPUT SHAFT 395.5 mm	
098	DIAMETER SHAFT OF INPUT SHAFT 50.3 mm	
099	LENGTH, PROFILE, INPUT SHAFT 120 mm	
100	BUSH VARIANT INPUT SHAFT WITHOUT GROOVE	
101	VERSION BEARING CONSTANT 1 GL	
102	DIAMETER BEARING INPUT SHAFT 99.916 mm	
103	TYPE FIT BEAR. INPUT SHAFT H5	
104	DESIGN,CONN., CLUTCH HOUSING SAE 1	
108	VERSION OF CLUTCH HOUSING INTEGRATED	
109	DESIGN BEARING OUTPUT STANDARD SUSPENSION	
111	POSITION MOUNT. FACE HOUSING 2 LEFT HAND	
115	REF.LENGTH,RELEASE BEAR.FLAN -7 mm	
116	DIAMETER, RELEASE FLANGE 60 mm	
117	TYPE FIT RELEASE BEARING FLA. F8	
120	ASSEMBLY POS. CLUTCH CYLINDER 6	
121	OUTER DIA. OUTPUT FLANGE RA 180 mm	
122	NO.OF BORES OUTPUT FLANGE HA1 4	
124	BORE DIA. OUTPUT FLANGE RA 15 mm	
129	REF. LENGTH OUTPUT FLANGE RA 211.5 mm	
136	DIMENSION SHIFT TURRET DIST. 288 mm	
137	MEAS. LOC. SHIFT TURRET DIST. SHIFT LEVER-LOCATION	
142	DESIGN, SHIFT LEVER WITHOUT GROOVE	
146	SHIFT LEVER CONNECTION GROVE	



Pos.	Information	Amendment number
152	SPRING ARRANGEMENT Q1	
153	SPRING FORCE DETENT PLUNGER RG 90 N	
158	SELECTOR SPRING FORCE, OUTSIDE 100 N	
160	SPRING FORCE,GEAR DETENT NG+GG 191 N	
161	SPRING FORCE OUTS. DETENT NEUT 200 N	
169	SWITCH, REVERSE GEAR y	
170	DESIGN, RG (REV.GEAR) SWITCH PREPARED	
173	PROT.CAP SWITCH, REVERSE GEAR n	
175	NOTE ON SWITCH, REVERSE GEAR GEAR SHIFT RAIL	
176	SWITCH, NEUTRAL GEAR y	
177	DESIGN,NG(NEUTRAL GEAR)SWITCH PREPARED	
180	PROT.CAP SWITCH, NEUTRAL GEAR n	
182	RG-GATE-IDENTIFICATION SWITCH n	
183	DES.RG-GATE-IDENTIF.SWITCH PREPARED	
192	FUNCTION DETENT RG-SWITCH	
193	DESIGN DETENT RG-SWITCH	
196	INSTRUCTION DETENT RG-SWITCH	
197	FUNCTION OF R/C SWITCH GP	
198	DESIGN, GP SWITCH PREPARED	
201	PROTECTING CAP GP SWITCH n	
203	FUNCTION OF S/G SWITCH GV	
204	DESIGN, GV SWITCH PREPARED	
207	PROTECTING CAP GV SWITCH n	
249	ATTACHM.POS.HEAT EXCHANGER IN FRONT LEFT PREPARED	
262	VERSION PULSE SENSOR SFA H68 WITHOUT GROOVE	
266	PROT.CAP PULSE SENSOR SFA H68 n	
267	NO. PULSES PULSE SENSOR SFAH68 6 IMP/U	
272	VER. PULSE SENSOR TRANSM. H70 WITHOUT GROOVE	
276	PROT.CAP PULSE SENSOR TM H70 n	
277	NO PULSES PULSE SENSOR TM H70 6 IMP/U	
278	ASSEMBLY POS PULSE SENSOR H70 1	
279	NOTE ASS. POS PULSE SENSOR H70 INSTALLATION DRAWING	
294	POSITION, OIL FILLER HOUSING LEFT+RIGHT	



Pos.	Information	Amendment number
295	NOTE ON OIL FILL FILL IN OVERFLOW	
296	OIL CAPACITY, GEARBOX 13 dm3	
298	OIL GRADE PERMISSIBLE ACC. TO TE-ML02	
299	OIL CLASS FIRST FILLING H	
300	CODING OUTER CONSERVATION KA1+2	
301	SCOPE OUTER CONSERVATION T	
302	CODING INNER CONSERVATION KI2	
303	CONSERVATION SPECIFICATION ZFN 916	
305	COLOR NOT	
312	Alias ID -----	
313	DAF TRUCKS N.V. 1315766	



Plant

Page 2 from 2

Material number: 1316.055.009

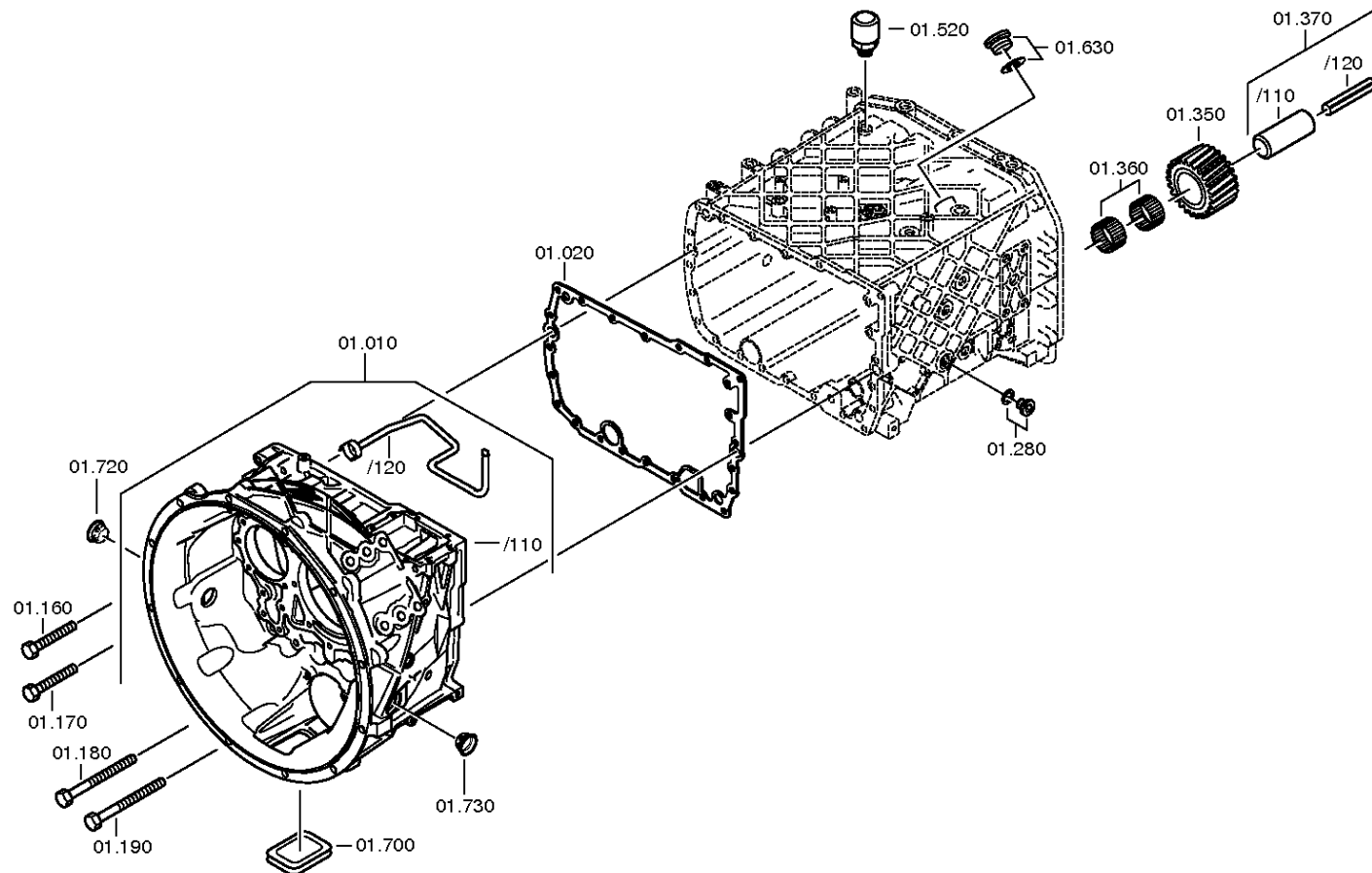
Plant: 068.01.51-1

TRANSMISSION HOUSING



16 S 181 /

TRANSMISSION HOUSING



Plant

Page 1 from 3

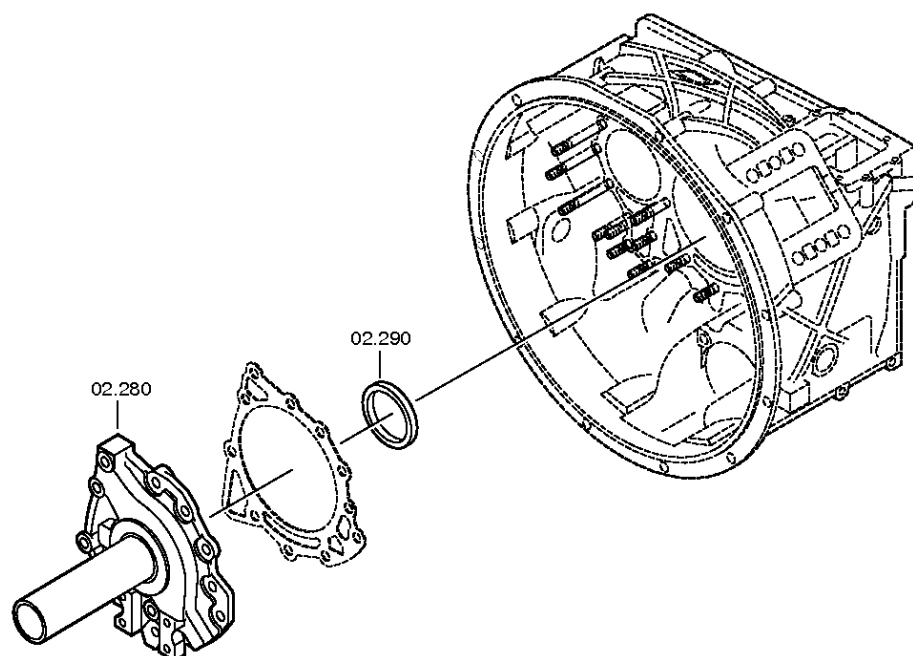
Material number: 1316.055.009

Plant: 068.02.54-1

CONNECTION PLATE



16 S 181 /
CONNECTION PLATE



Plant

Page 2 from 3

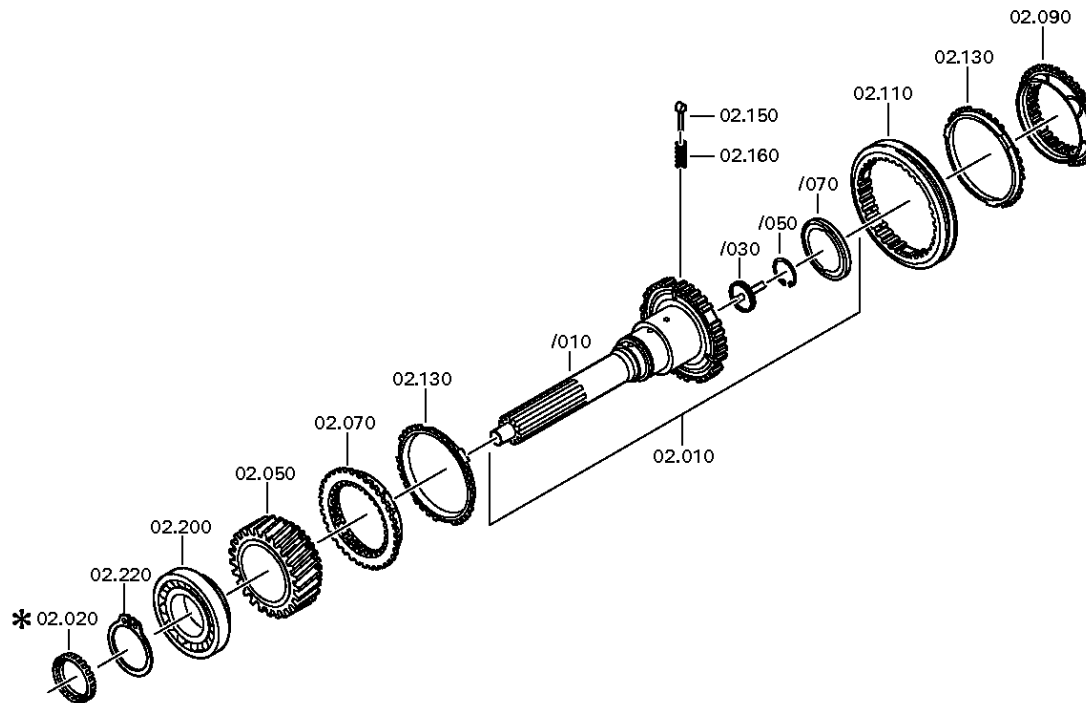
Material number: 1316.055.009

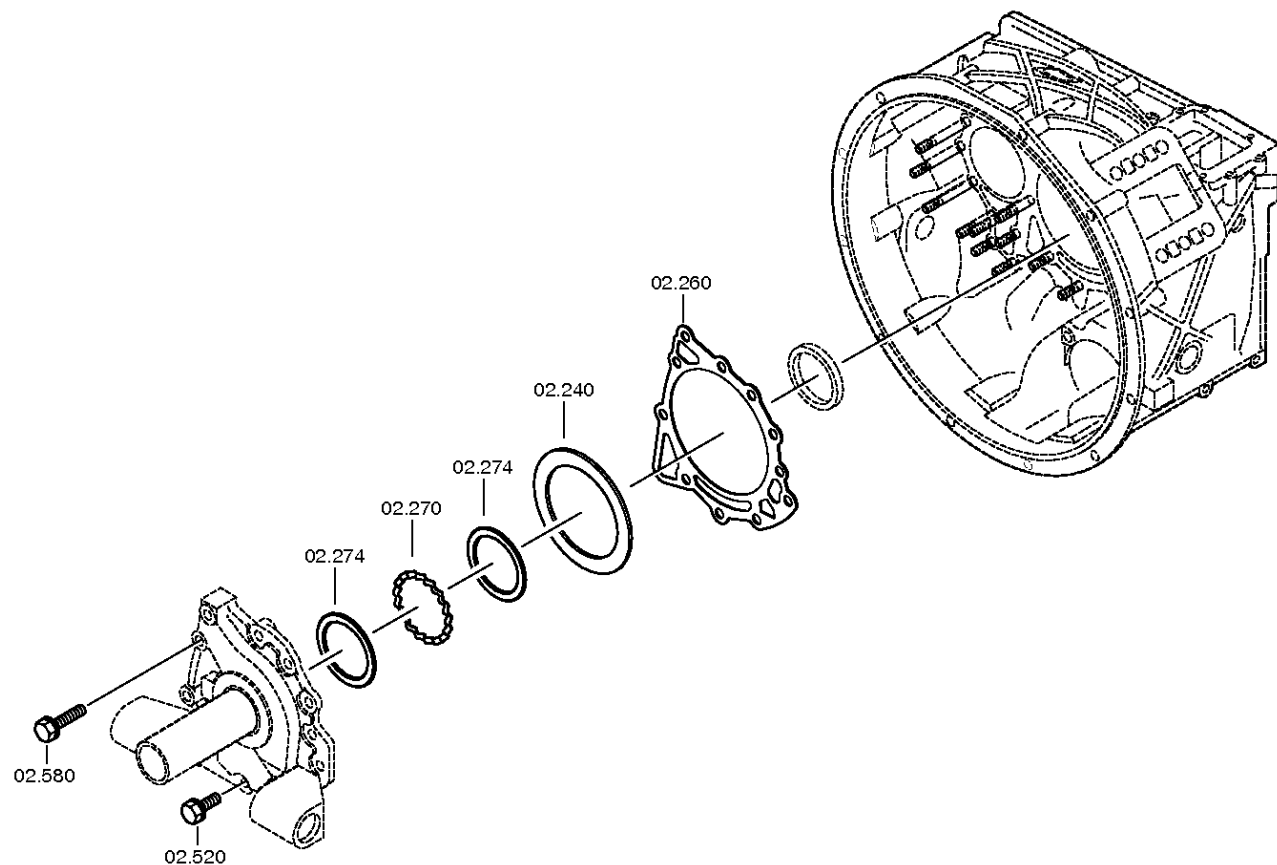
Plant: 068.02.02-1

CONNECTION PLATE



16 S 181 /
CONNECTION PLATE





Plant

Page 1 from 2

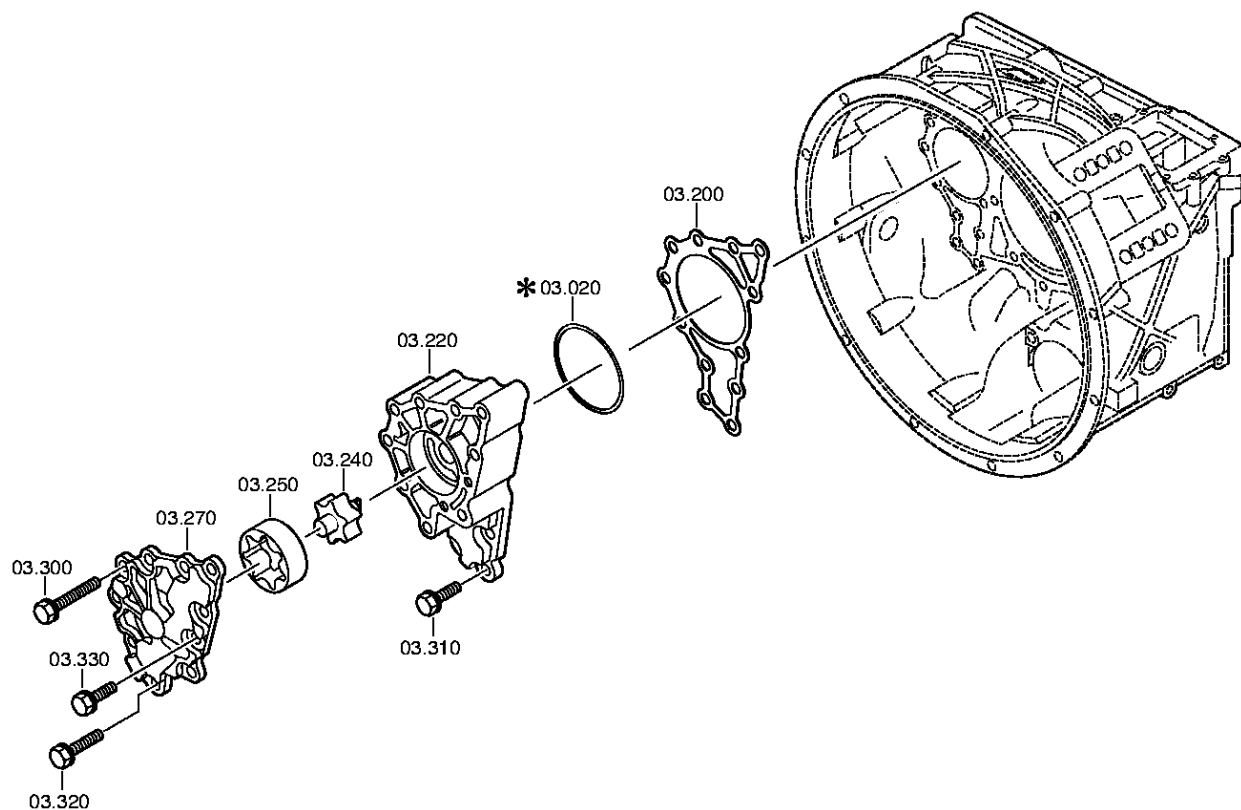
Material number: 1316.055.009

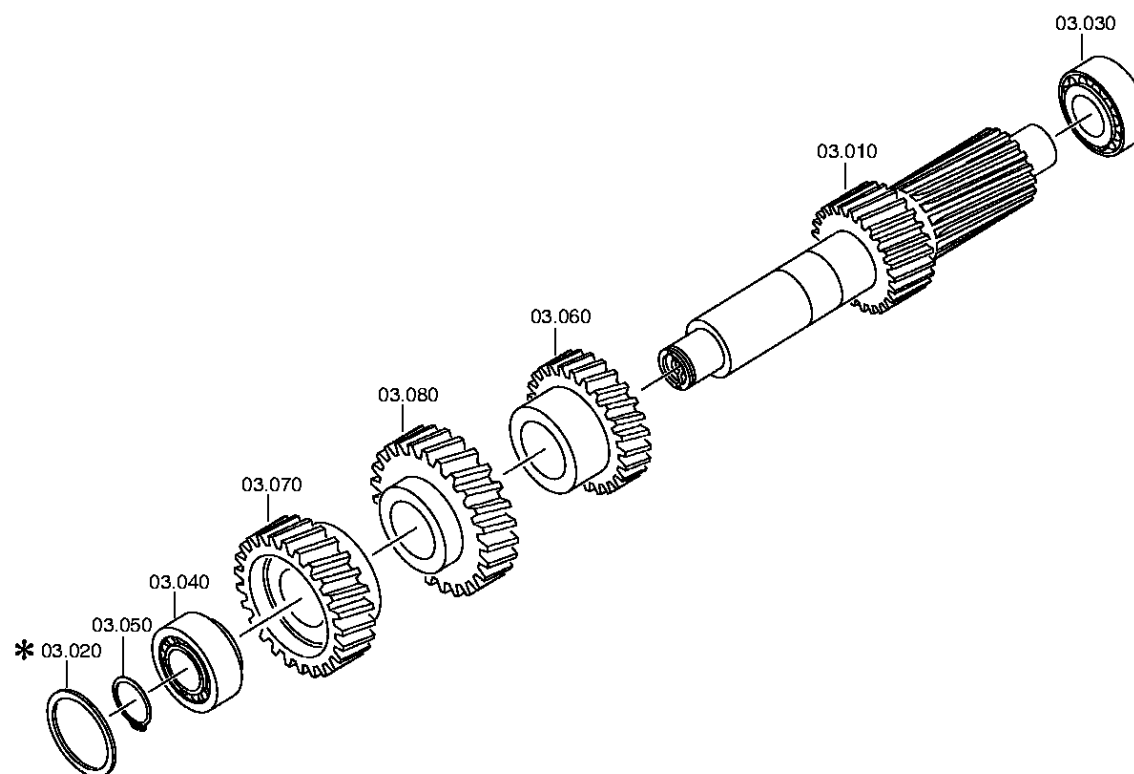
Plant: 068.03.80-1

COUNTERSHAFT



16 S 181 /
COUNTERSHAFT





Page 1 from 1

Plant: 068.04.12-1



This diagram illustrates the exploded view of a mechanical assembly, showing the relationship between various components. The parts are labeled with numbers, including 04.520, 04.500, 04.480, 04.460, 04.410, 04.420, 04.430, 04.440, 04.390, 04.370, 04.350, 04.330, 04.090, 04.270, 04.280, 04.260, 04.220, 04.210, 04.200, 04.180, 04.160, 04.150, 04.140, 04.120, 04.110, 04.100, 04.080, 04.070, 04.060, 04.050, 04.040, 04.030, 04.020, 04.010, 04.000, 03.990, 03.980, 03.970, 03.960, 03.950, 03.940, 03.930, 03.920, 03.910, 03.900, 03.890, 03.880, 03.870, 03.860, 03.850, 03.840, 03.830, 03.820, 03.810, 03.800, 03.790, 03.780, 03.770, 03.760, 03.750, 03.740, 03.730, 03.720, 03.710, 03.700, 03.690, 03.680, 03.670, 03.660, 03.650, 03.640, 03.630, 03.620, 03.610, 03.600, 03.590, 03.580, 03.570, 03.560, 03.550, 03.540, 03.530, 03.520, 03.510, 03.500, 03.490, 03.480, 03.470, 03.460, 03.450, 03.440, 03.430, 03.420, 03.410, 03.400, 03.390, 03.380, 03.370, 03.360, 03.350, 03.340, 03.330, 03.320, 03.310, 03.300, 03.290, 03.280, 03.270, 03.260, 03.250, 03.240, 03.230, 03.220, 03.210, 03.200, 03.190, 03.180, 03.170, 03.160, 03.150, 03.140, 03.130, 03.120, 03.110, 03.100, 03.090, 03.080, 03.070, 03.060, 03.050, 03.040, 03.030, 03.020, 03.010, 03.000, 02.990, 02.980, 02.970, 02.960, 02.950, 02.940, 02.930, 02.920, 02.910, 02.900, 02.890, 02.880, 02.870, 02.860, 02.850, 02.840, 02.830, 02.820, 02.810, 02.800, 02.790, 02.780, 02.770, 02.760, 02.750, 02.740, 02.730, 02.720, 02.710, 02.700, 02.690, 02.680, 02.670, 02.660, 02.650, 02.640, 02.630, 02.620, 02.610, 02.600, 02.590, 02.580, 02.570, 02.560, 02.550, 02.540, 02.530, 02.520, 02.510, 02.500, 02.490, 02.480, 02.470, 02.460, 02.450, 02.440, 02.430, 02.420, 02.410, 02.400, 02.390, 02.380, 02.370, 02.360, 02.350, 02.340, 02.330, 02.320, 02.310, 02.300, 02.290, 02.280, 02.270, 02.260, 02.250, 02.240, 02.230, 02.220, 02.210, 02.200, 02.190, 02.180, 02.170, 02.160, 02.150, 02.140, 02.130, 02.120, 02.110, 02.100, 02.090, 02.080, 02.070, 02.060, 02.050, 02.040, 02.030, 02.020, 02.010, 02.000, 01.990, 01.980, 01.970, 01.960, 01.950, 01.940, 01.930, 01.920, 01.910, 01.900, 01.890, 01.880, 01.870, 01.860, 01.850, 01.840, 01.830, 01.820, 01.810, 01.800, 01.790, 01.780, 01.770, 01.760, 01.750, 01.740, 01.730, 01.720, 01.710, 01.700, 01.690, 01.680, 01.670, 01.660, 01.650, 01.640, 01.630, 01.620, 01.610, 01.600, 01.590, 01.580, 01.570, 01.560, 01.550, 01.540, 01.530, 01.520, 01.510, 01.500, 01.490, 01.480, 01.470, 01.460, 01.450, 01.440, 01.430, 01.420, 01.410, 01.400, 01.390, 01.380, 01.370, 01.360, 01.350, 01.340, 01.330, 01.320, 01.310, 01.300, 01.290, 01.280, 01.270, 01.260, 01.250, 01.240, 01.230, 01.220, 01.210, 01.200, 01.190, 01.180, 01.170, 01.160, 01.150, 01.140, 01.130, 01.120, 01.110, 01.100, 01.090, 01.080, 01.070, 01.060, 01.050, 01.040, 01.030, 01.020, 01.010, 01.000, 00.990, 00.980, 00.970, 00.960, 00.950, 00.940, 00.930, 00.920, 00.910, 00.900, 00.890, 00.880, 00.870, 00.860, 00.850, 00.840, 00.830, 00.820, 00.810, 00.800, 00.790, 00.780, 00.770, 00.760, 00.750, 00.740, 00.730, 00.720, 00.710, 00.700, 00.690, 00.680, 00.670, 00.660, 00.650, 00.640, 00.630, 00.620, 00.610, 00.600, 00.590, 00.580, 00.570, 00.560, 00.550, 00.540, 00.530, 00.520, 00.510, 00.500, 00.490, 00.480, 00.470, 00.460, 00.450, 00.440, 00.430, 00.420, 00.410, 00.400, 00.390, 00.380, 00.370, 00.360, 00.350, 00.340, 00.330, 00.320, 00.310, 00.300, 00.290, 00.280, 00.270, 00.260, 00.250, 00.240, 00.230, 00.220, 00.210, 00.200, 00.190, 00.180, 00.170, 00.160, 00.150, 00.140, 00.130, 00.120, 00.110, 00.100, 00.090, 00.080, 00.070, 00.060, 00.050, 00.040, 00.030, 00.020, 00.010, 00.000.

Plant

Page 1 from 3

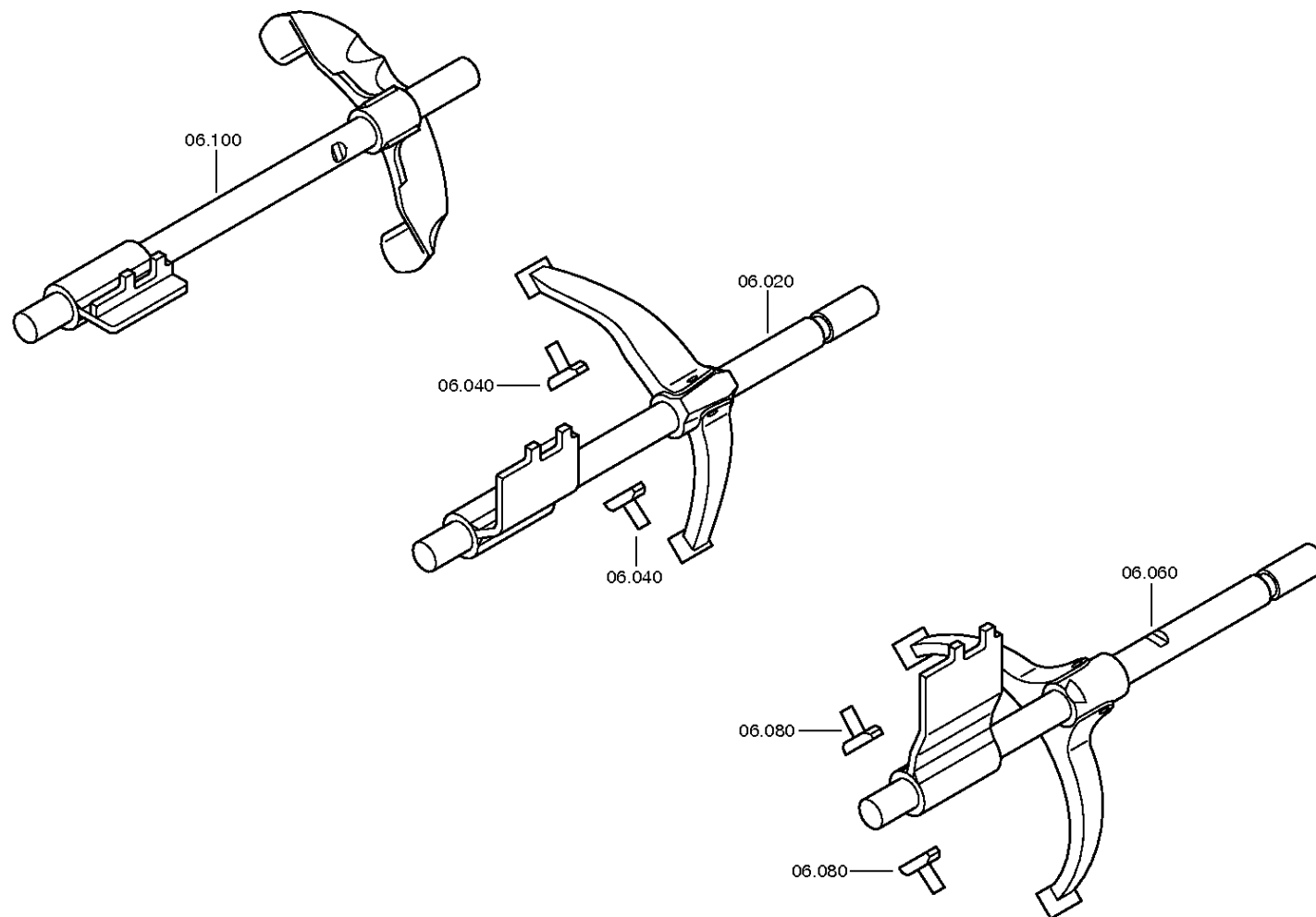
Material number: 1316.055.009

Plant: 068.06.01-1

SHIFT SYSTEM



16 S 181 /
SHIFT SYSTEM



Plant

Page 2 from 3

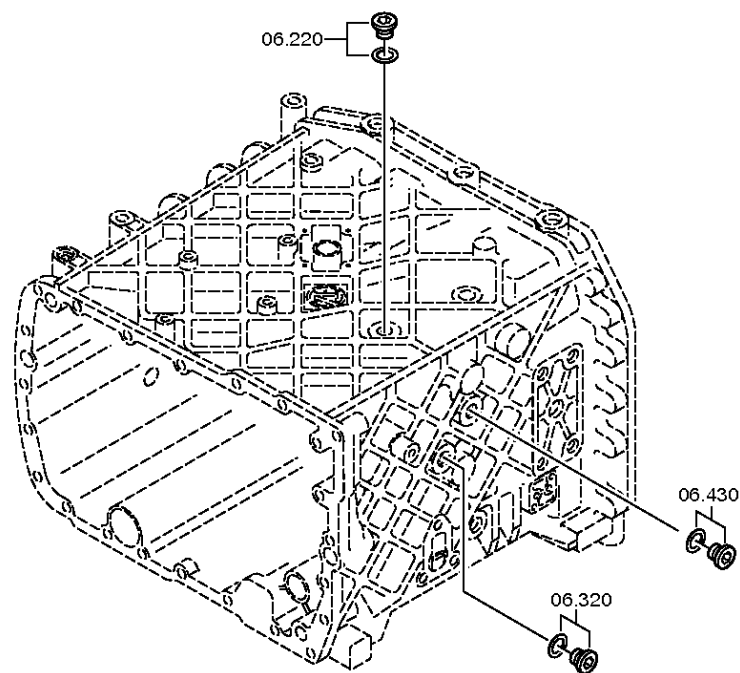
Material number: 1316.055.009

Plant: 068.06.40-1

SHIFT SYSTEM



16 S 181 /
SHIFT SYSTEM



Plant

Page 3 from 3

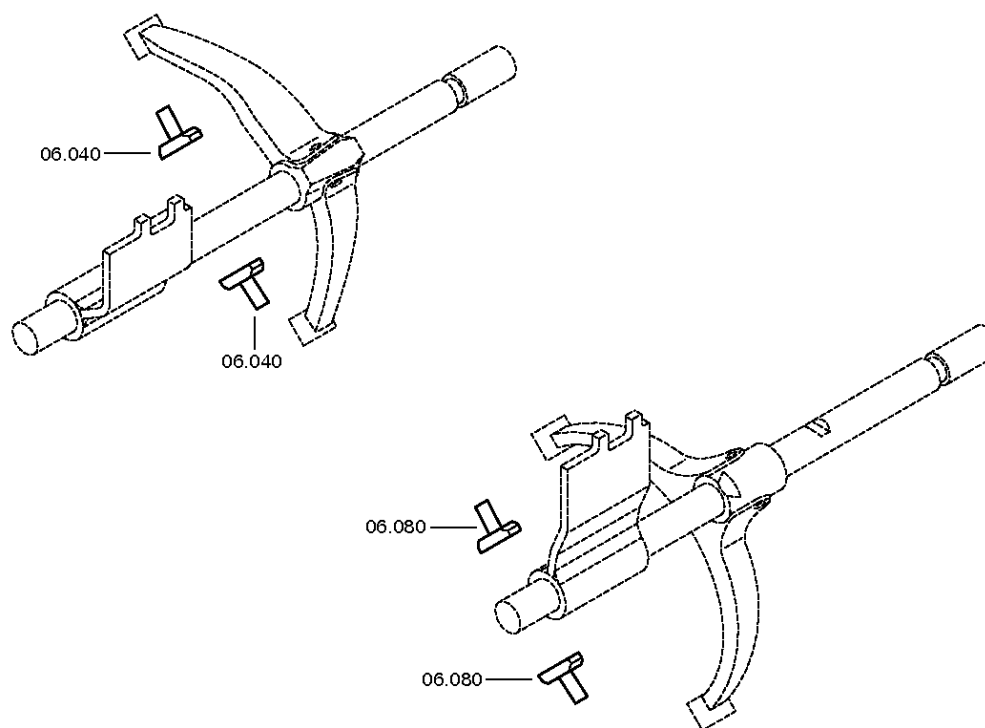
Material number: 1316.055.009

Plant: 068.06.80-1

SHIFT SYSTEM



16 S 181 /
SHIFT SYSTEM



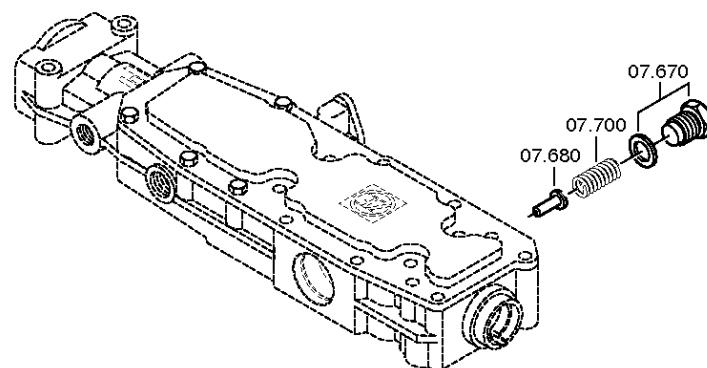
Material number: 1316.055.009

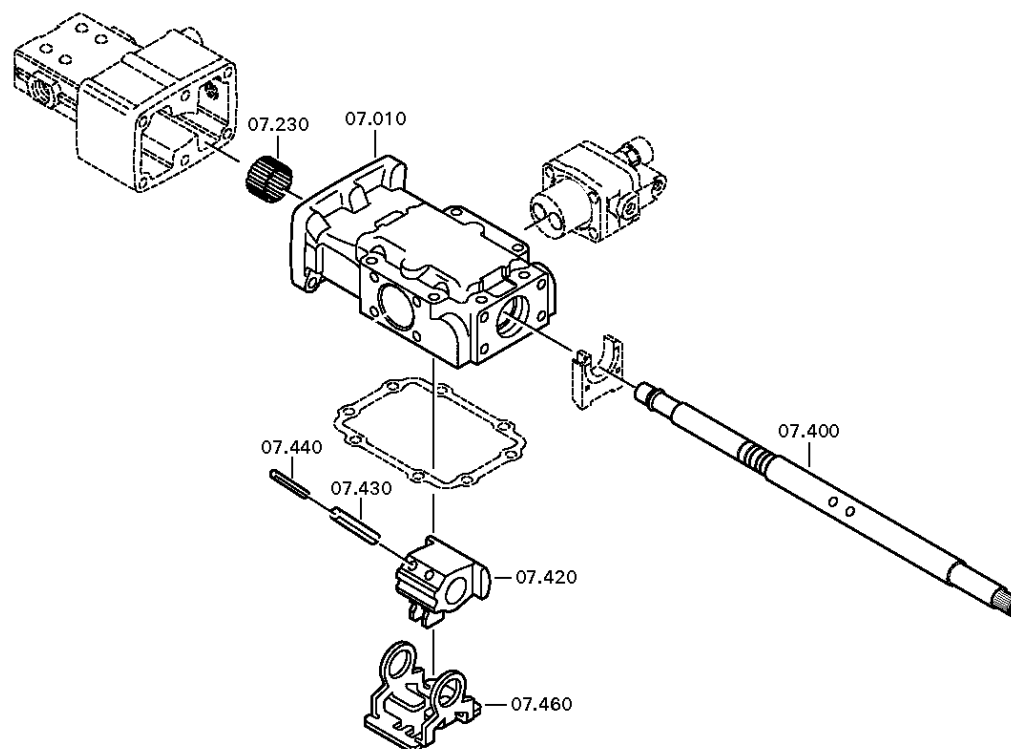
Plant: 068.07.09-1

GEAR SHIFT HOUSING



16 S 181 /
GEAR SHIFT HOUSING





Plant

Page 3 from 3

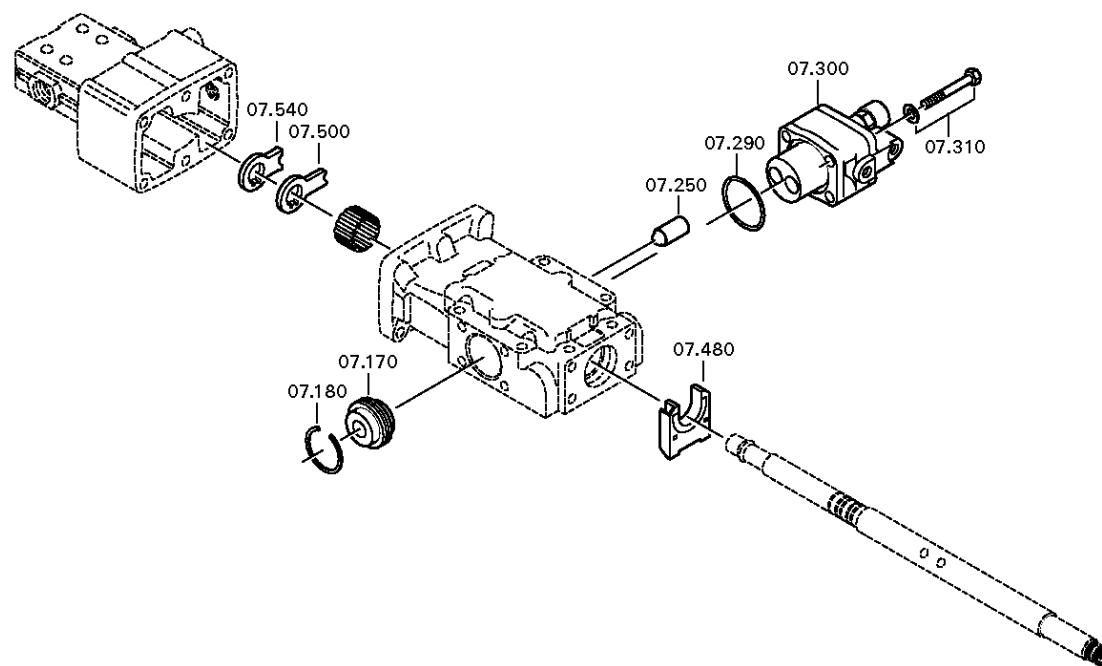
Material number: 1316.055.009

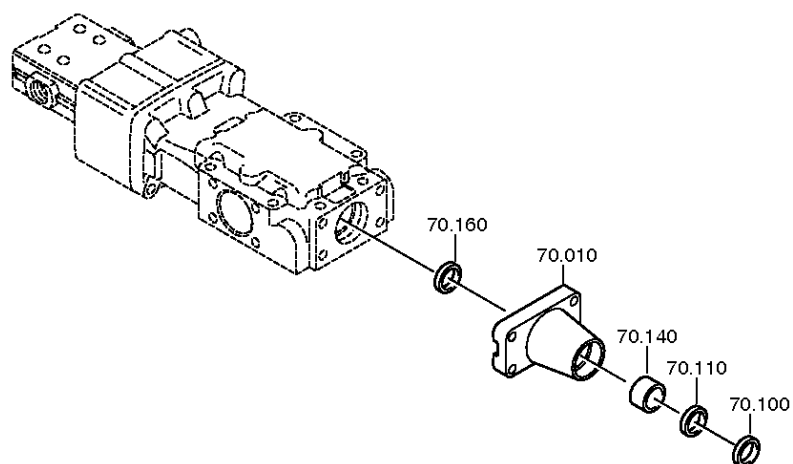
Plant: 068.07.15-1

GEAR SHIFT HOUSING



16 S 181 /
GEAR SHIFT HOUSING





Plant

Page 2 from 2

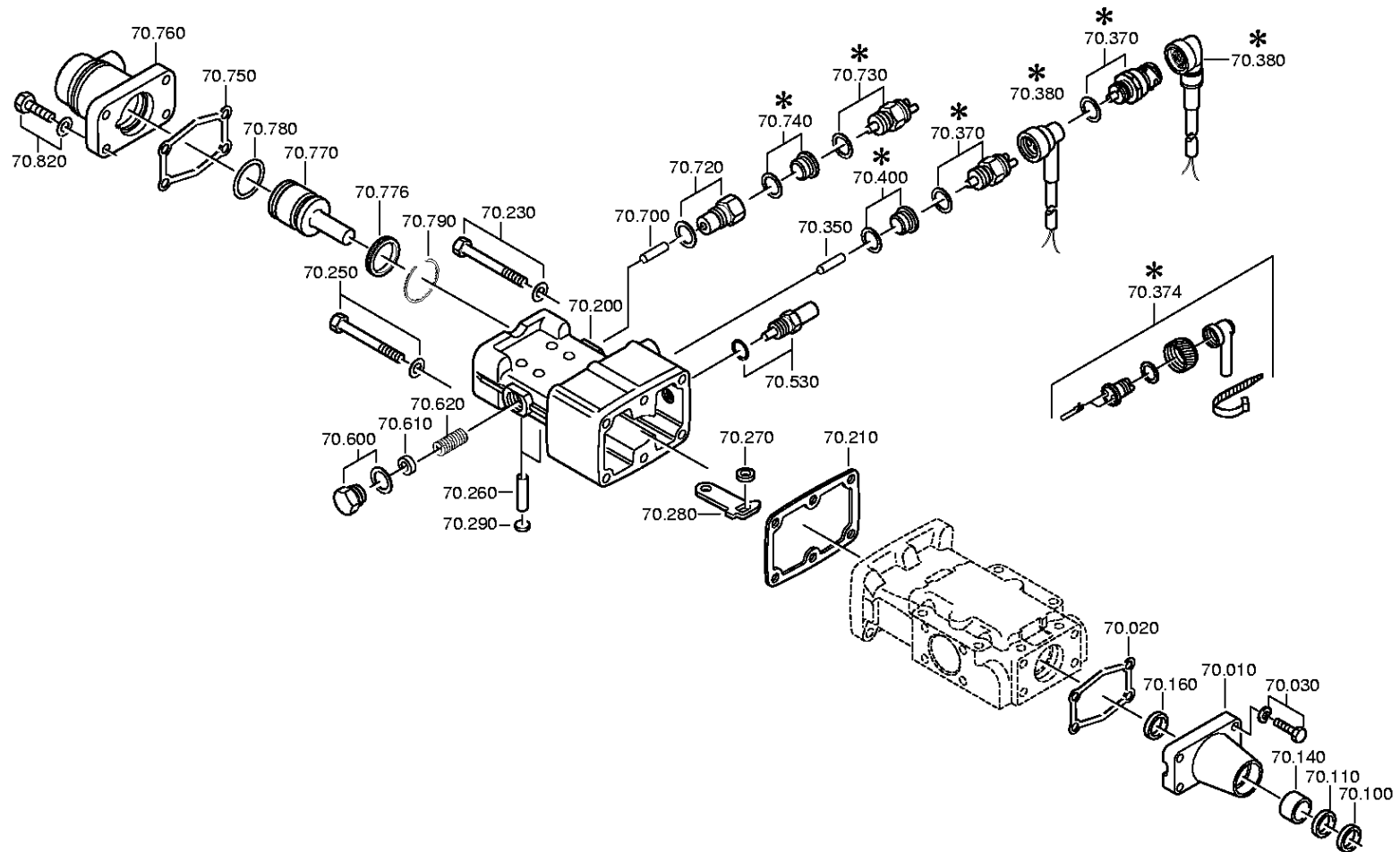
Material number: 1316.055.009

Plant: 068.08.08-1

SHIFT TURRET



16 S 181 /
SHIFT TURRET



Plant

Page 1 from 1

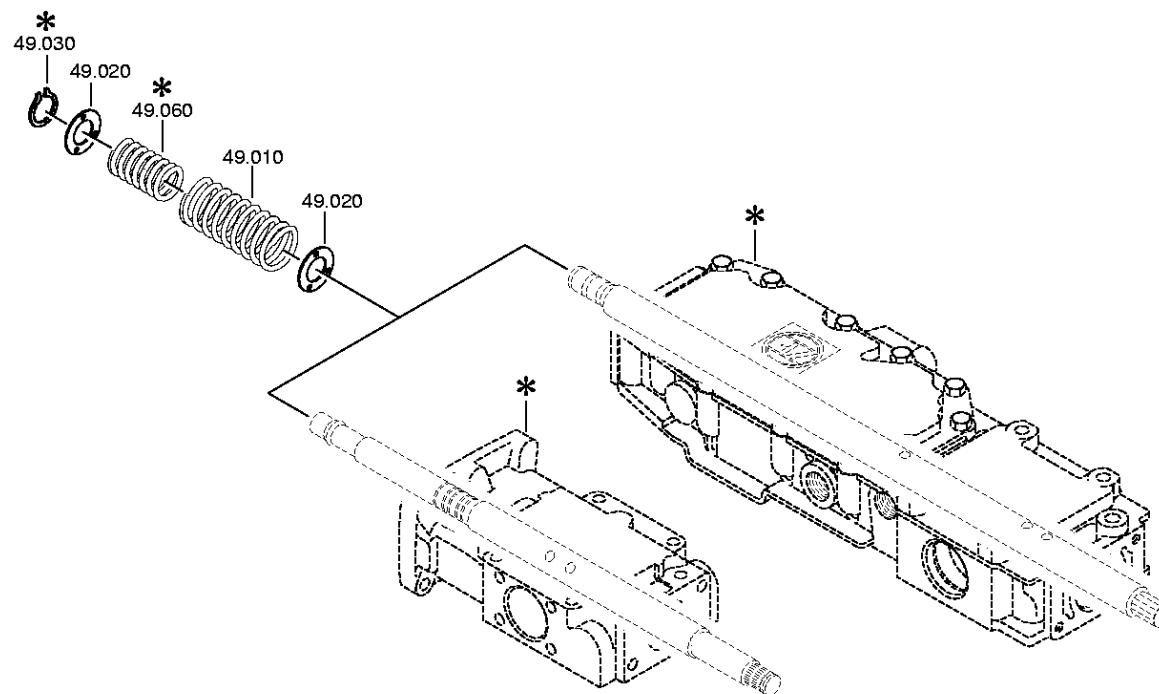
Material number: 1316.055.009

Plant: 068.12.01-1

Material-assembly-group-no: 1316.149.001



16 S 181 /
SET OF SPRINGS



Plant

Page 1 from 2

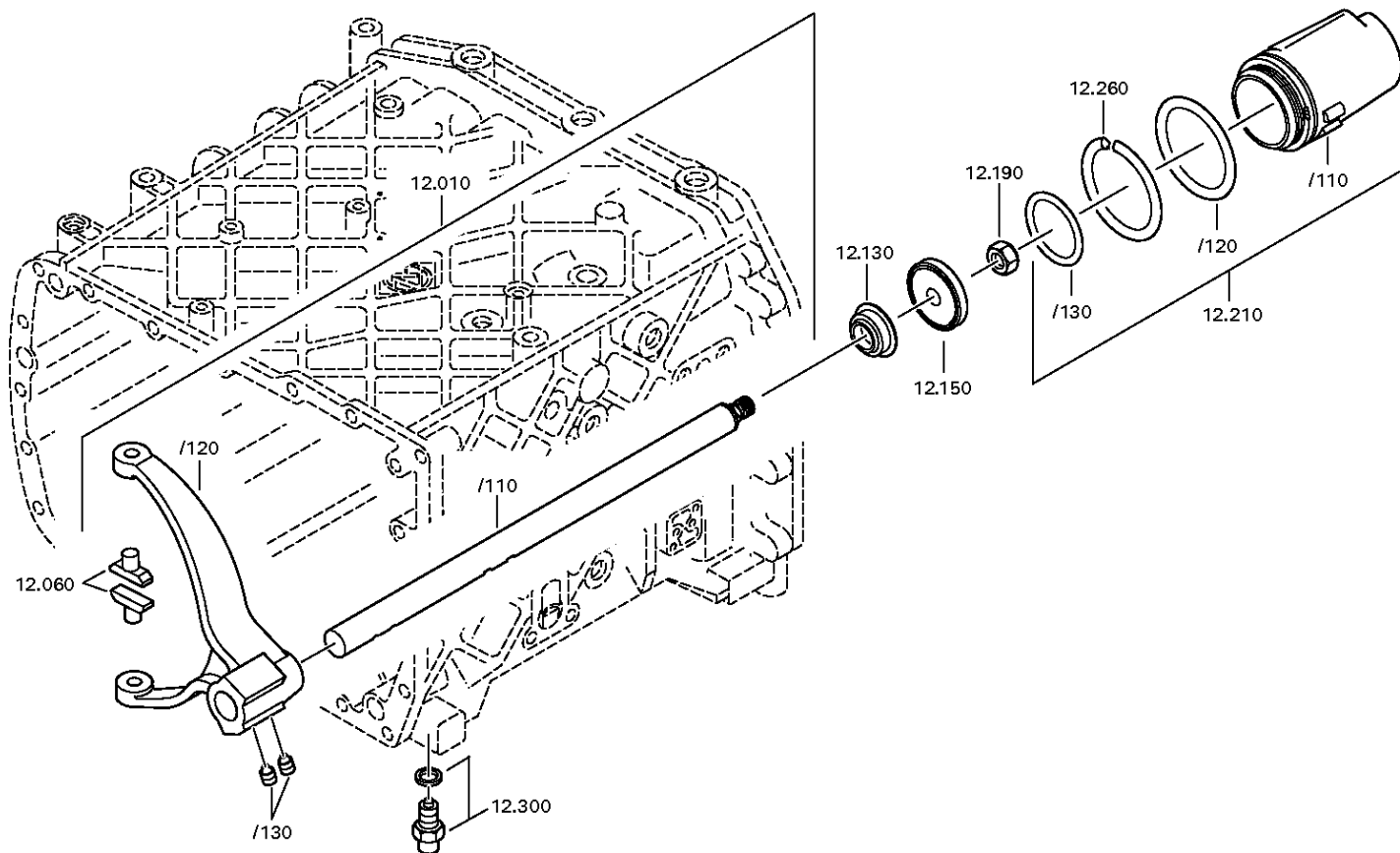
Material number: 1316.055.009

Plant: 068.40.04-1

GV-SHIFT SYSTEM



16 S 181 /
GV-SHIFT SYSTEM



Plant

Page 2 from 2

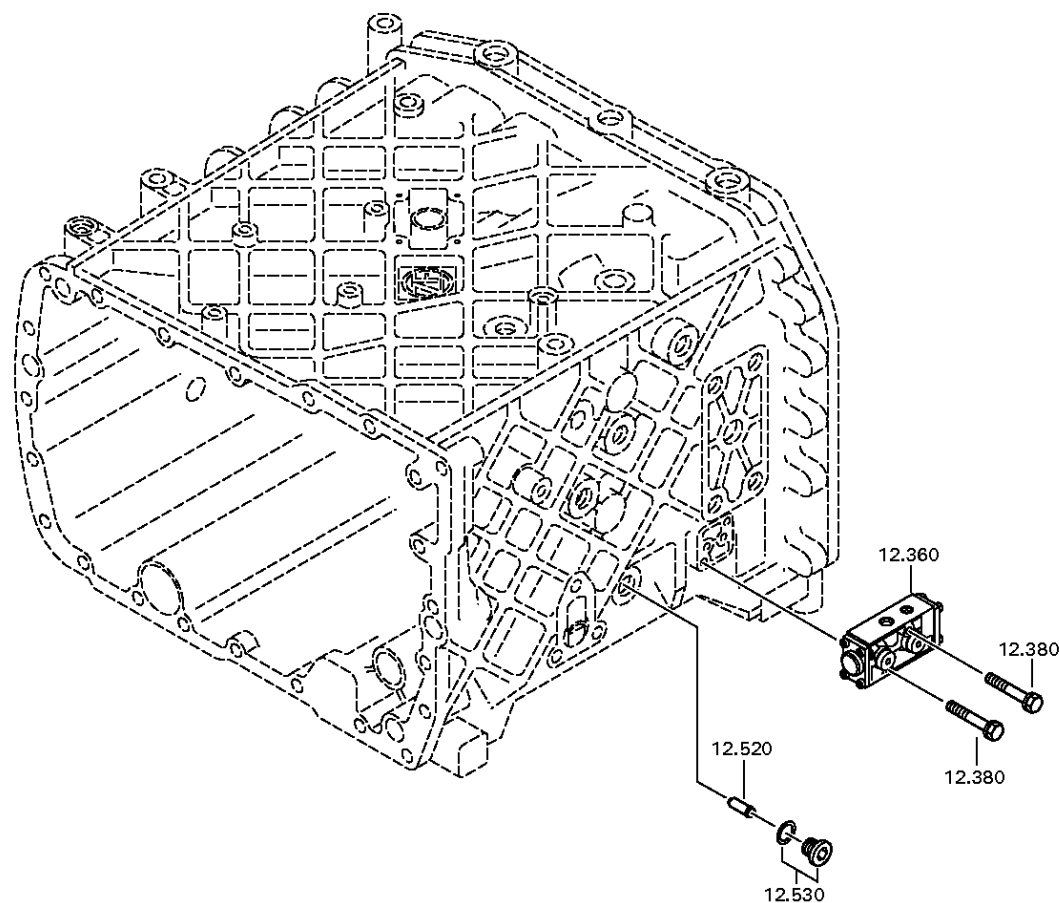
Material number: 1316.055.009

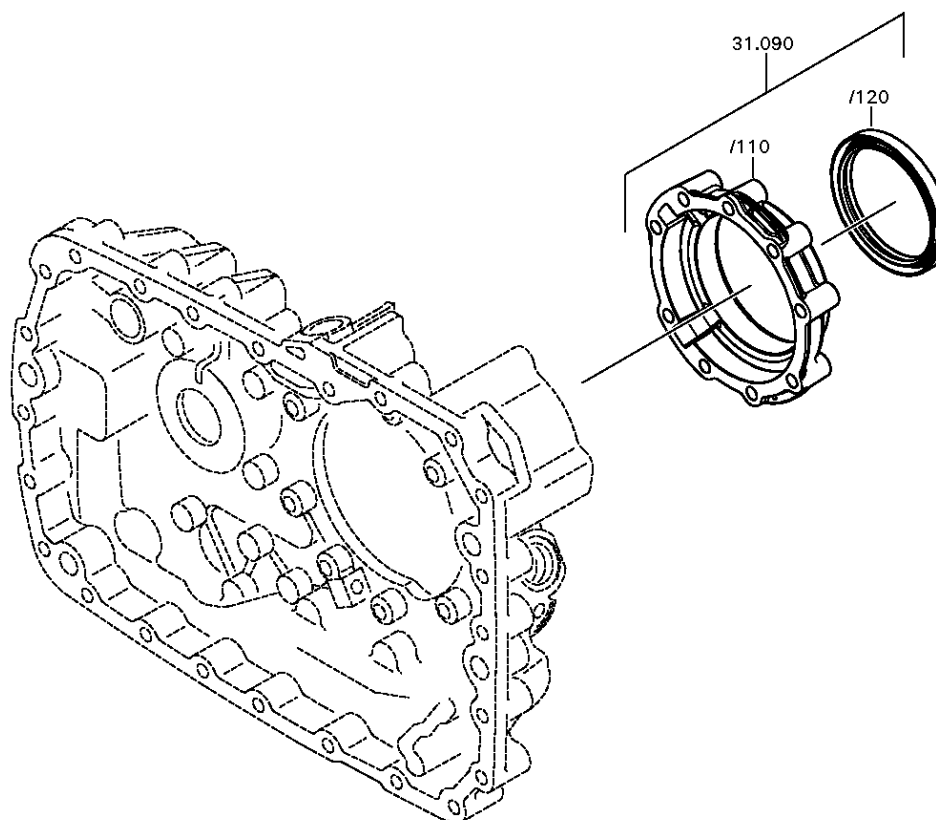
Plant: 068.40.40-1

GV-SHIFT SYSTEM



16 S 181 /
GV-SHIFT SYSTEM





Plant

Page 2 from 5

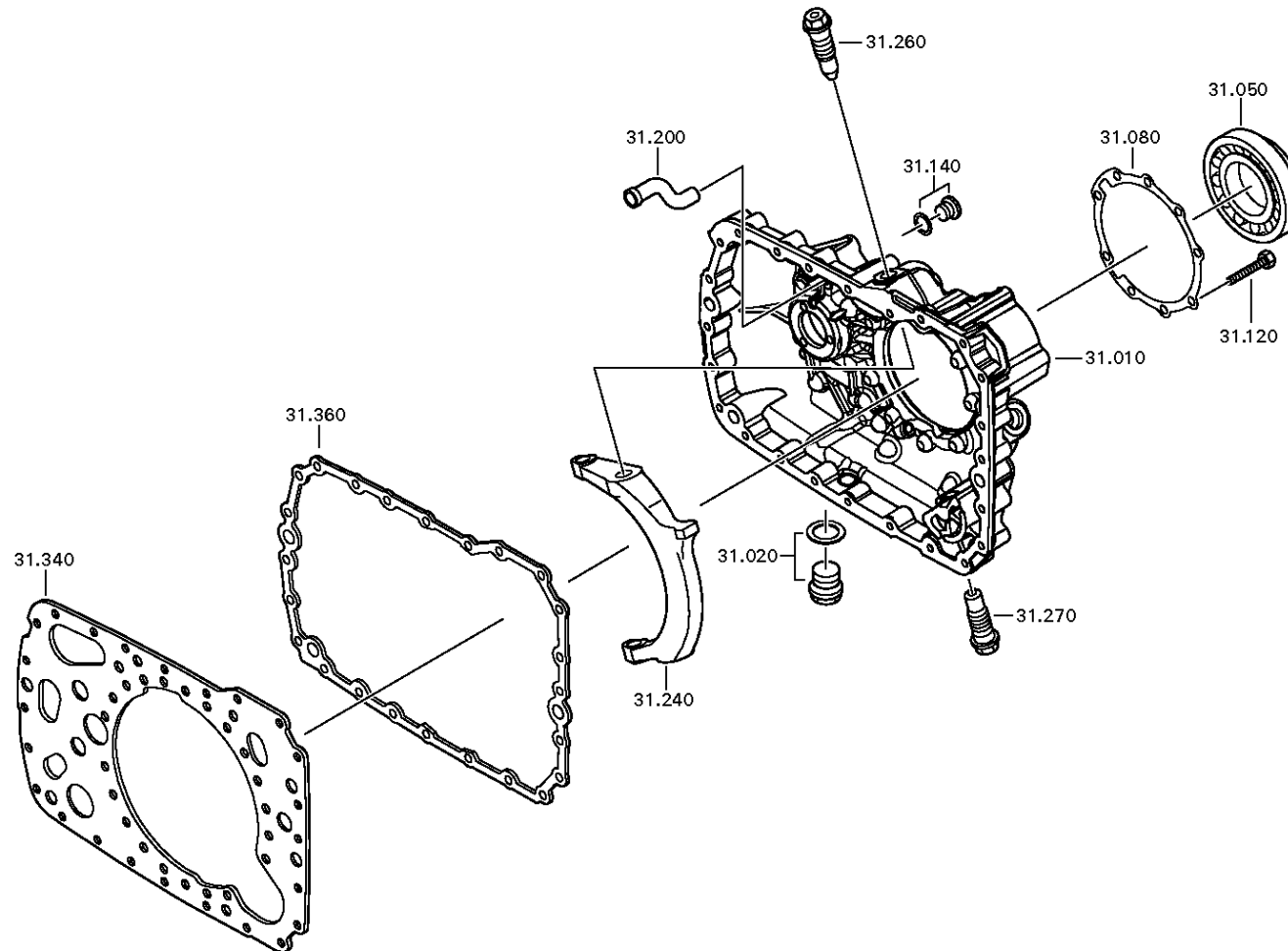
Material number: 1316.055.009

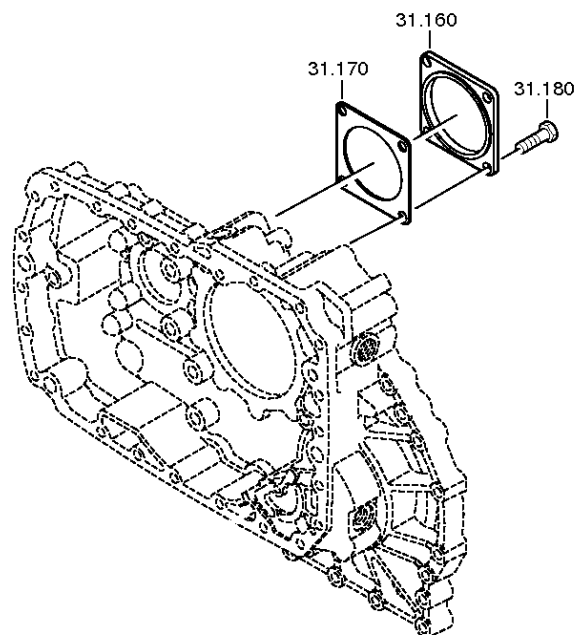
Plant: 068.43.06-1

COVER



16 S 181 /
COVER





Plant

Page 4 from 5

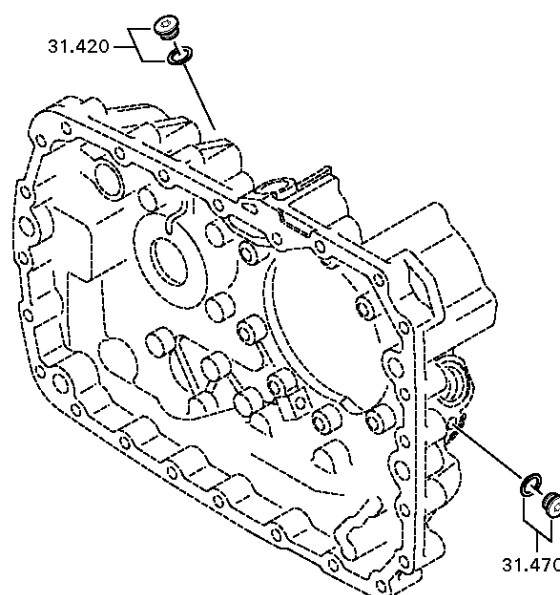
Material number: 1316.055.009

Plant: 068.43.45-1

COVER



16 S 181 /
COVER



Plant

Page 5 from 5

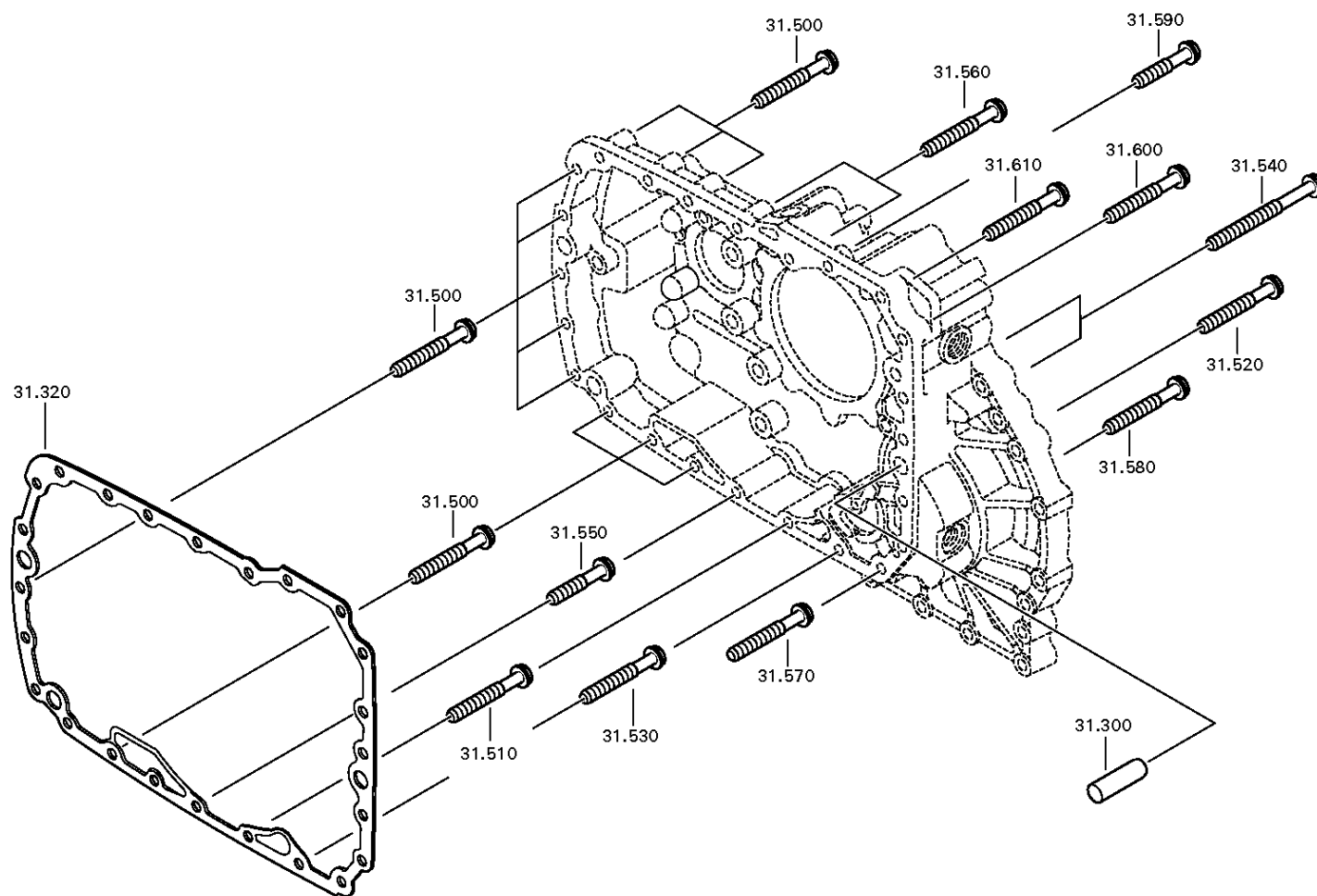
Material number: 1316.055.009

Plant: 068.43.80-1

COVER



16 S 181 /
COVER



Plant

Page 1 from 2

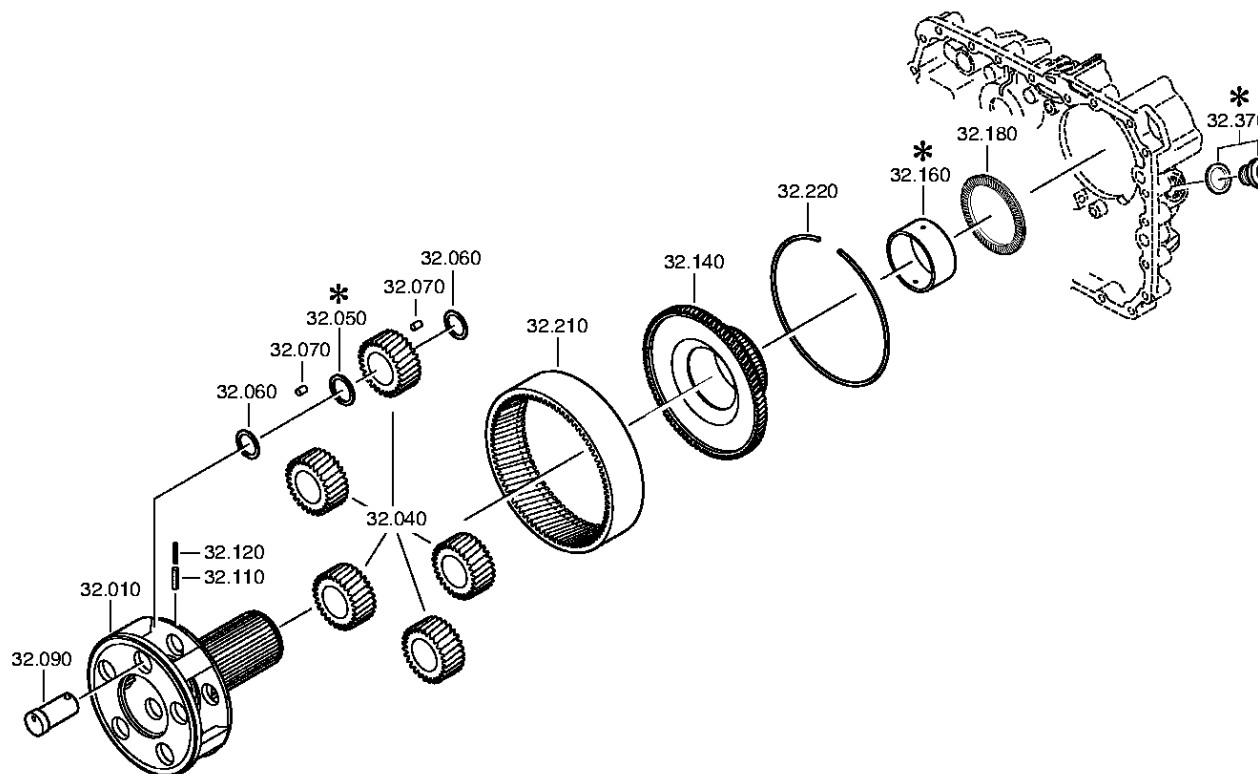
Material number: 1316.055.009

Plant: 068.44.07-1

PLANETARY DRIVE



16 S 181 /
PLANETARY DRIVE



Plant

Page 2 from 2

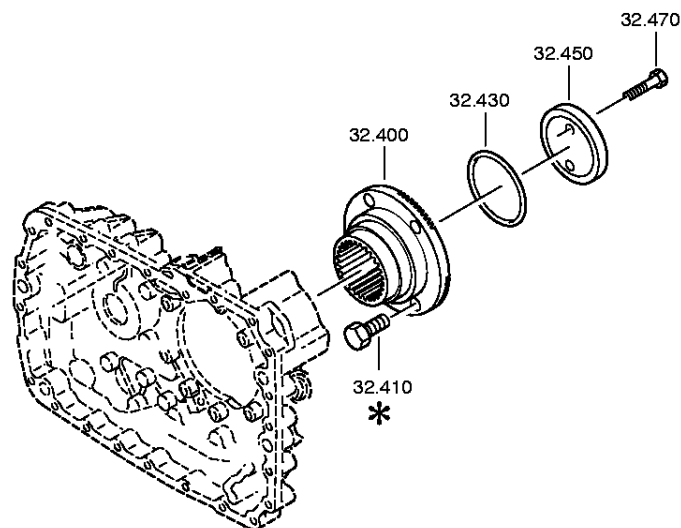
Material number: 1316.055.009

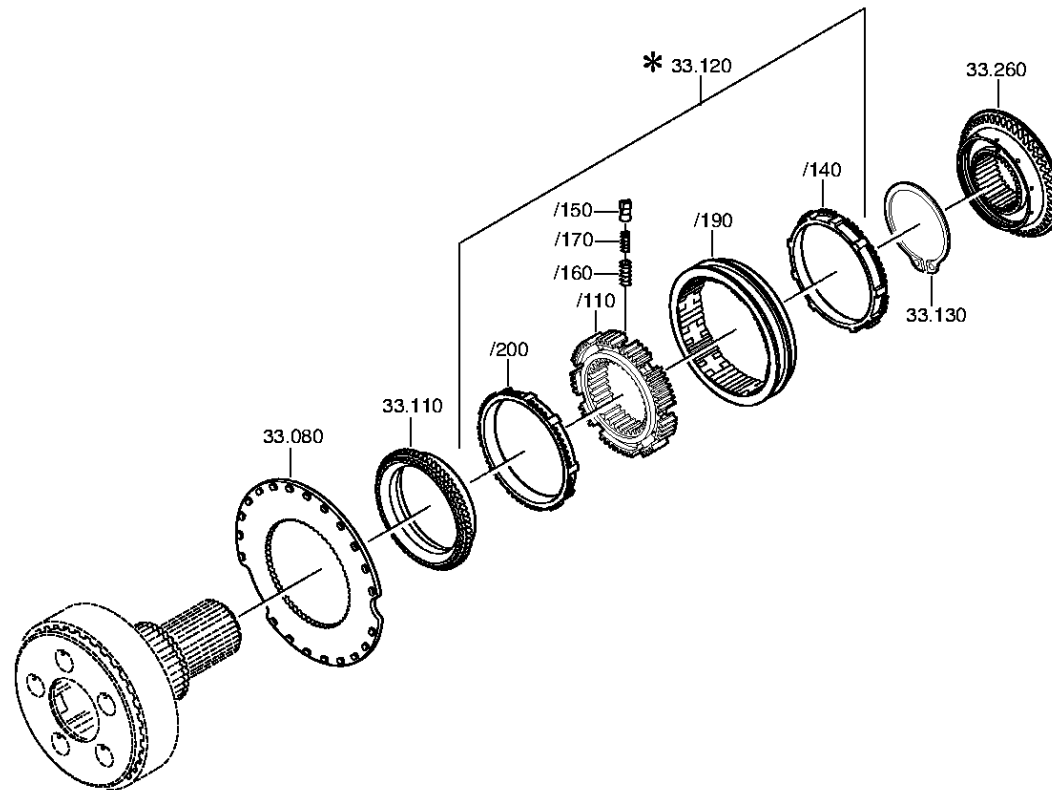
Plant: 068.44.41-1

PLANETARY DRIVE



16 S 181 /
PLANETARY DRIVE





Plant

Page 2 from 2

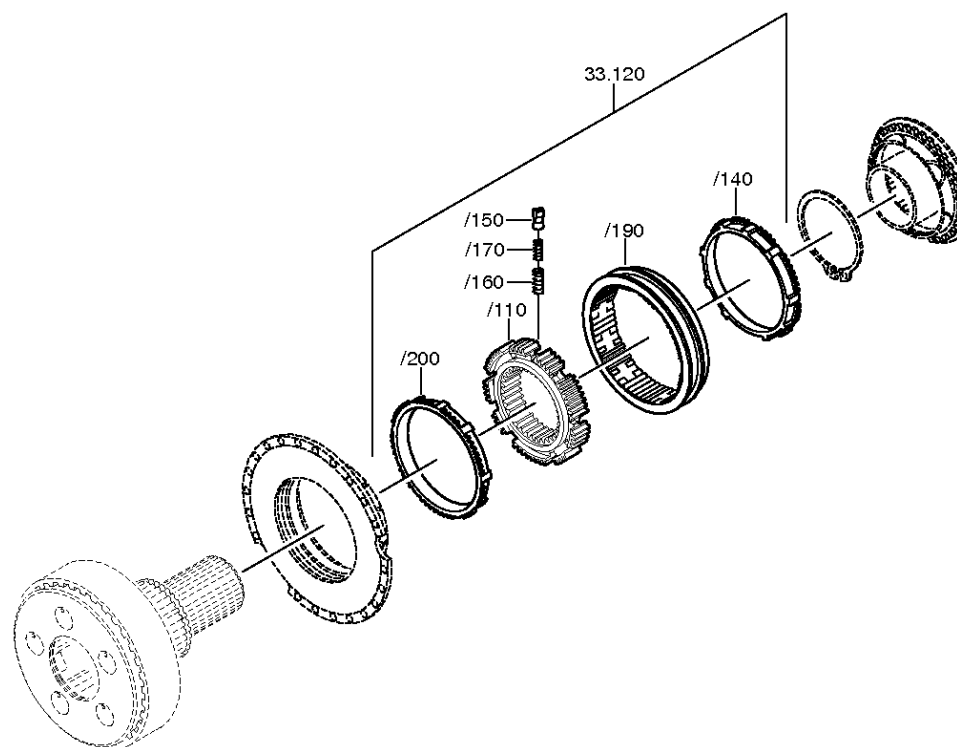
Material number: 1316.055.009

Plant: 068.45.40-1

SYNCHRONIZER



16 S 181 /
SYNCHRONIZER



Plant

Page 1 from 1

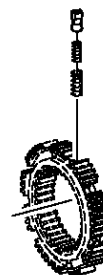
Material number: 1316.055.009

Plant: 073.98.01-1

Material-assembly-group-no: 1272.298.934



16 S 181 /
SMALL COMP.SET



Plant

Page 1 from 2

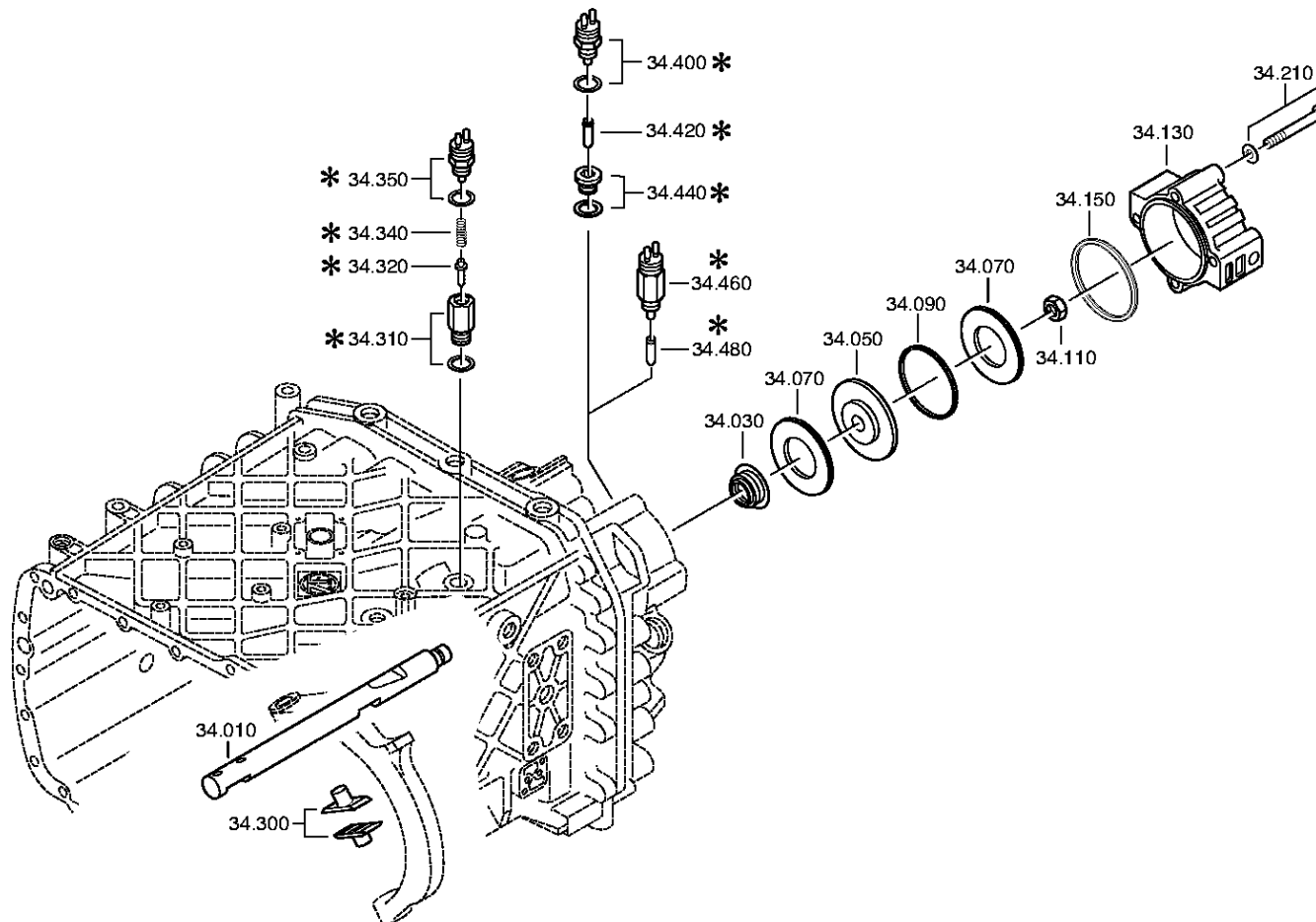
Material number: 1316.055.009

Plant: 068.46.02-1

GP SHIFT SYSTEM



16 S 181 /
GP SHIFT SYSTEM



Plant

Page 2 from 2

Material number: 1316.055.009

Plant: 068.46.41-1

GP SHIFT SYSTEM



16 S 181 /
GP SHIFT SYSTEM

