



# Spare Parts Catalog

12 AS 2301 IT (##### #: 14.01.2013)

Material number: 1327.040.034

ZF Friedrichshafen AG

Hauptverwaltung

80038 Friedrichshafen

Deutschland

Telefon: +49 7541 77-0

Telefax: +49 7541 77-908000

[www.zf.com](http://www.zf.com)

zuständiges Werk:

Friedrichshafen



| Pos. | Information   | Amendment number |
|------|---|------------------|
| 001  | Use case -----  |                  |
| 002  | Customer MAN  |                  |
| 003  | City NN   |                  |
| 004  | DUNS  |                  |
| 005  | Classification use case -----                         |                  |
| 006  | APPROVAL NOTE 1 ERSTEINBAU*UEBERPRUEFUNG ERFORDERLICH |                  |
| 008  | Product description -----                             |                  |
| 009  | ATTACHED AGRREGATES 1 IT ASTRONIC                     |                  |
| 011  | OUTER DIA. OUTPUT FLANGE RA 180 mm                    |                  |
| 013  | NO.OF SCREWS OUTPUT FLANGE RA 4                       |                  |
| 015  | DIA. THREAD OUTPUT FL. SCR. RA M14                    |                  |
| 016  | THREAD PITCH OUTPUT FL SCR. RA 1.5 mm                 |                  |
| 017  | THREAD LENGTH OUTP.FL SCREW RA 50 mm                  |                  |
| 018  | REF. LENGTH OUTPUT FLANGE RA 109.5 mm                 |                  |
| 019  | DIMENSION OUTPUT FLANGE SCREW M14X1,5X50              |                  |
| 020  | CONNECT.LENGTH, OUTPUT FLANGE 109.5 mm                |                  |
| 022  | NUMBER OF FLANGE BOLTS 4                              |                  |
| 023  | OUTSIDE DIA., OUTPUT FLANGE 180 mm                    |                  |
| 025  | ATTACHM.VAR,EMERG.STRG PUMP WITHOUT GROOVE            |                  |
| 032  | ATTACHM.POS.HEAT EXCHANGER BACK LEFT                  |                  |
| 033  | 1.INST.INSTRUCTION HEAT EXCHANGER WITH                |                  |
| 034  | OIL CAPACITY, GEARBOX 21 dm3                          |                  |
| 035  | OIL FILL VARIANT EX WORKS                             |                  |
| 036  | OIL GRADE PERMISSIBLE ACC. TO TE-ML02                 |                  |
| 037  | CODING OUTER CONSERVATION KA1+2                       |                  |
| 038  | SCOPE OUTER CONSERVATION T                            |                  |
| 039  | CODING INNER CONSERVATION KI1                         |                  |
| 040  | CONSERVATION SPECIFICATION ZFN 916                    |                  |
| 041  | NUMBER OF PLUGS 17                                    |                  |
| 042  | CODIERUNG STOPFENANZAHL                               |                  |
| 043  | COLOR JET BLACK                                       |                  |
| 044  | COLOUR CLASSIFICATION ACC. TO RAL 9005                |                  |



| Pos. | Information                               | Amendment number |
|------|---|------------------|
| 045  | PAINTING, ZF STANDARD 915 W               |                  |
| 047  | TRANSMISSION VARIANT INTARDER             |                  |
| 048  | NUMBER OF GEARS 12                        |                  |
| 049  | CHECK INFO NG GESCHALTET NACH FUNKTIONSL. |                  |
| 050  | HINWEIS PRUEFPROGRAMM 12GEAR OD           |                  |
| 052  | CLEANNESS SPECIFICATION ZFN 5015          |                  |
| 073  | CLEANNESS SCALE NUMBER 1 20               |                  |
| 074  | CLEANNESS SCALE NUMBER 2 16               |                  |
| 075  | Documents -----                           |                  |
| 076  | GEARBOX Assembly 1327.600.012             |                  |
| 077  | GEARBOX Drawing 1327.600.012              |                  |
| 078  | Alias ID -----                            |                  |
| 079  | MAN 81.32003-6655                         |                  |

## Plant

Page 1 from 1

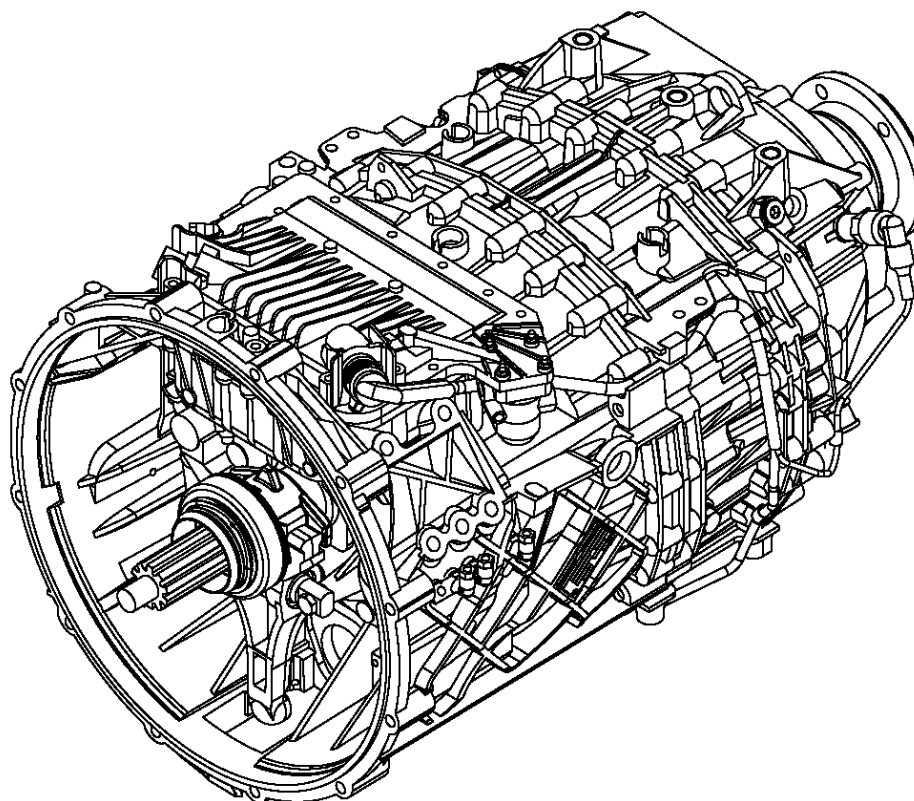
Material number: 1327.040.034

Plant: 105.A1.01-1

Material-assembly-group-no: 1327.001.062

12 AS 2301 IT (текущая дата: 14.01.2013) /

12 AS TD/TO



## Plant

Page 1 from 1

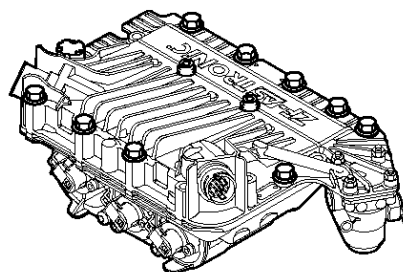
Material number: 1327.040.034

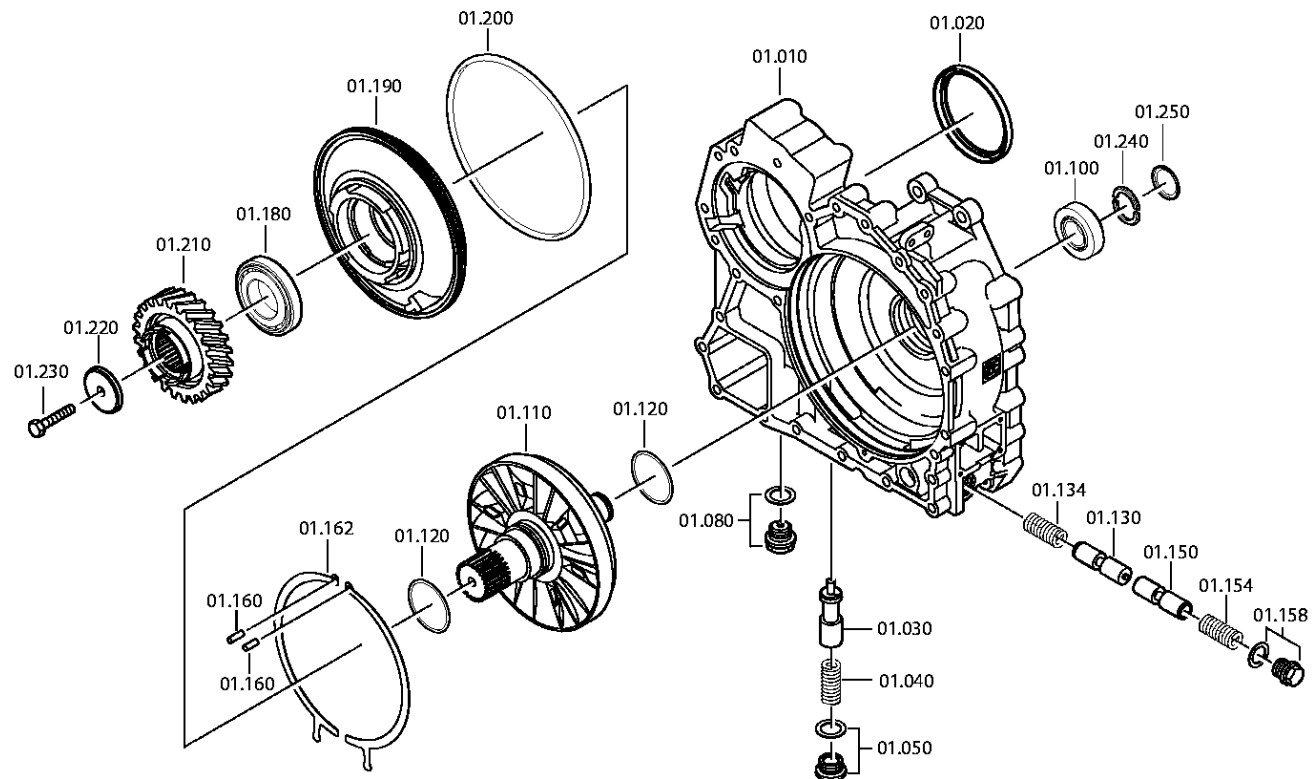
Plant: 105.B3.01-1

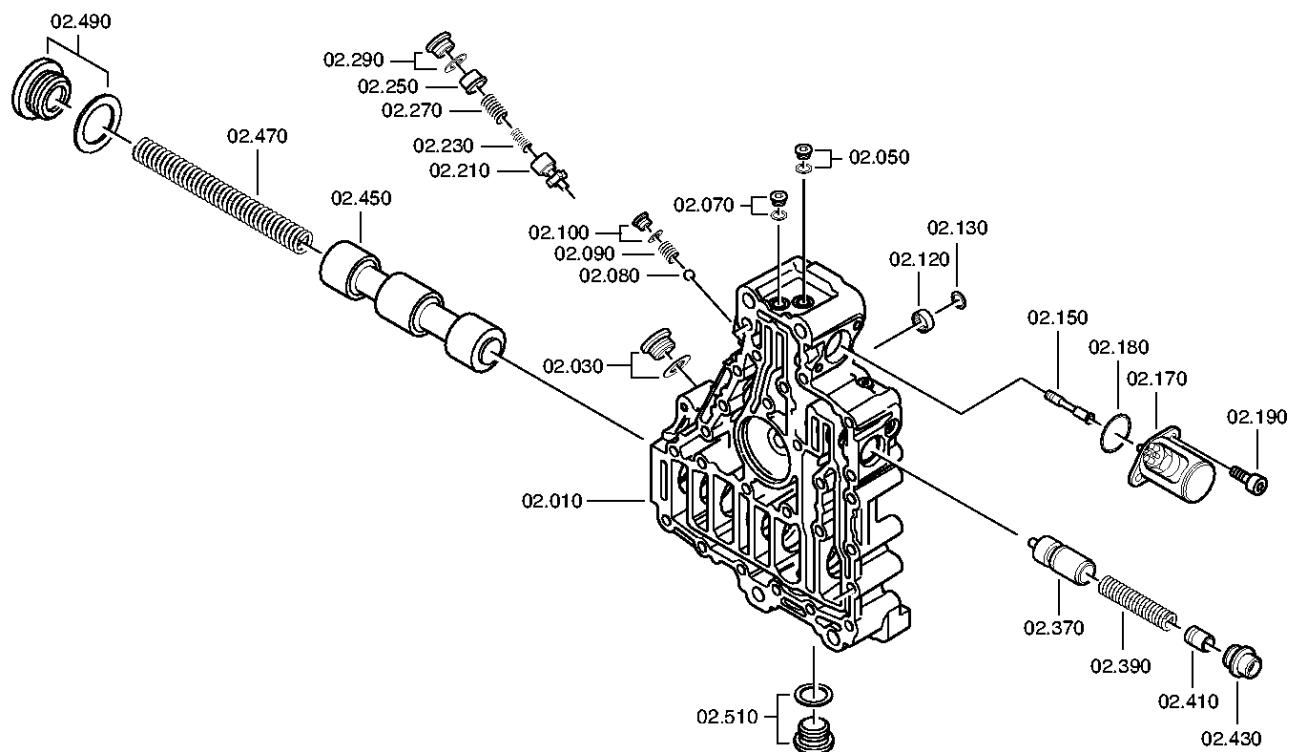
Material-assembly-group-no: 6009.074.094

12 AS 2301 IT (текущая дата: 14.01.2013) /

GS 3





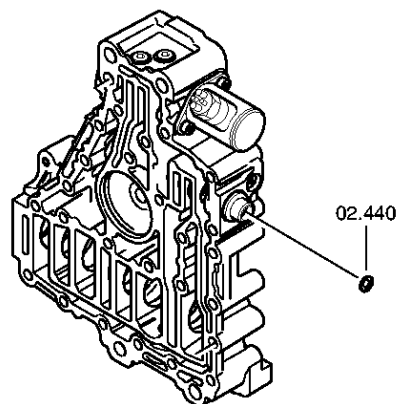


## Plant

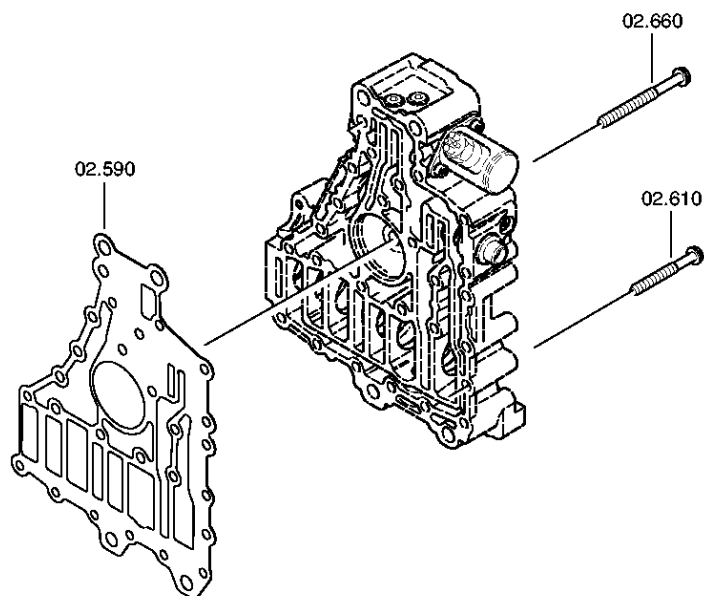
Page 2 from 3

Material number: 1327.040.034  
Plant: 078.02.79-1  
**CONTROL UNIT**

12 AS 2301 IT (текущая дата: 14.01.2013) /  
**CONTROL UNIT**





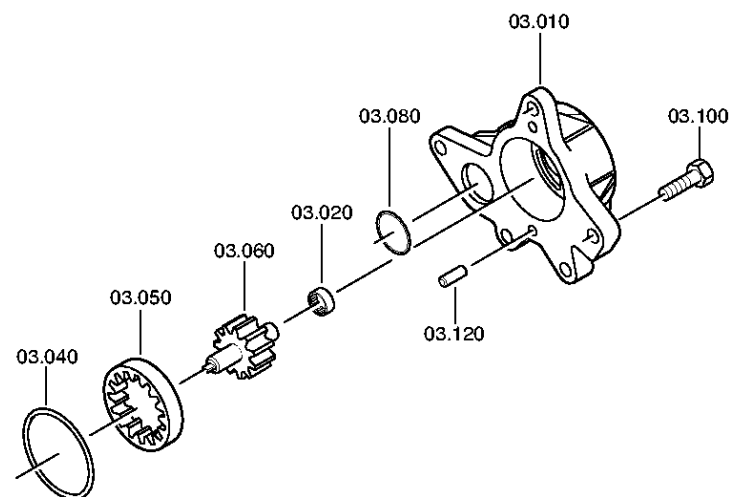


# Plant

Page 1 from 2

Material number: 1327.040.034  
Plant: 078.03.01-1  
PUMP

12 AS 2301 IT (текущая дата: 14.01.2013) /  
PUMP

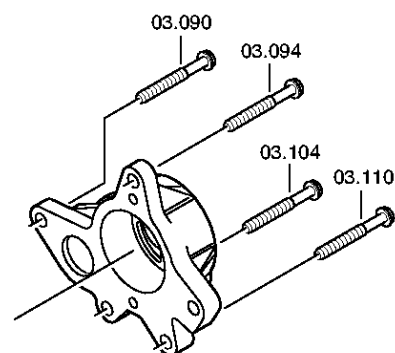


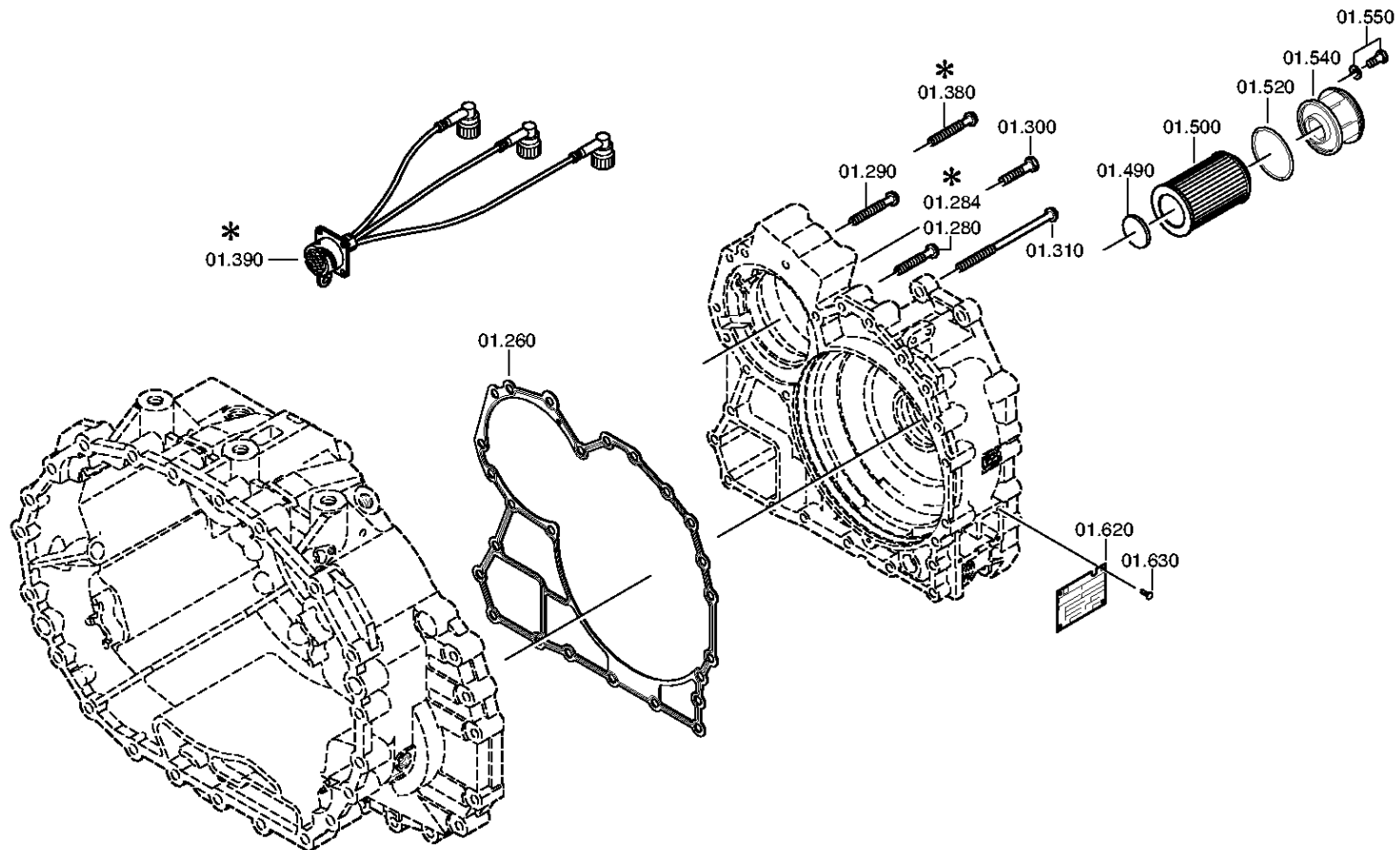
## Plant

Page 2 from 2

Material number: 1327.040.034  
Plant: 078.03.80-1  
PUMP

12 AS 2301 IT (текущая дата: 14.01.2013) /  
PUMP





## Plant

Page 1 from 1

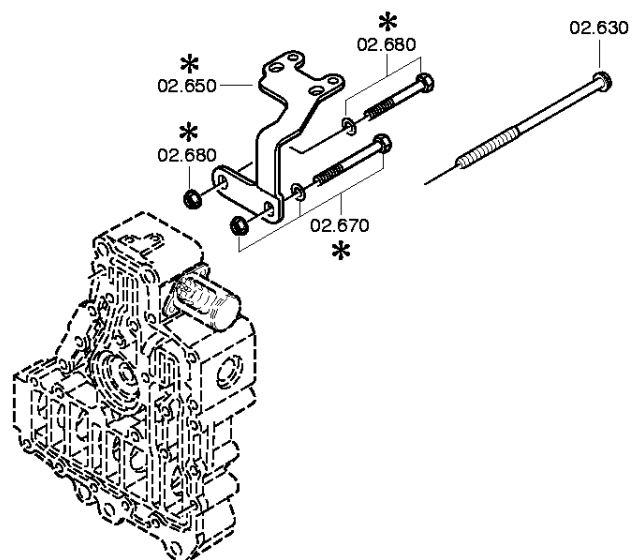
Material number: 1327.040.034

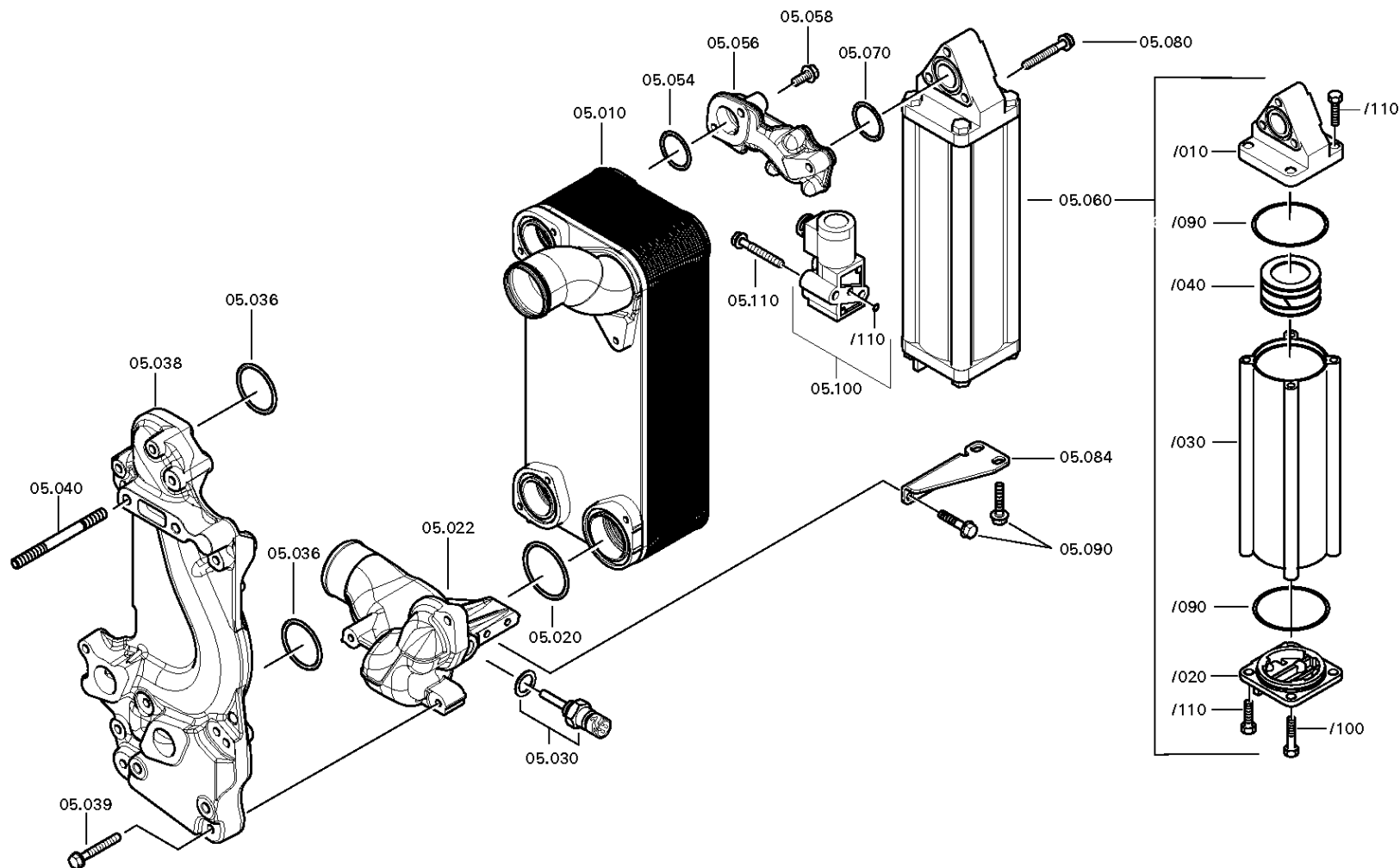
Plant: 078.02.80-1

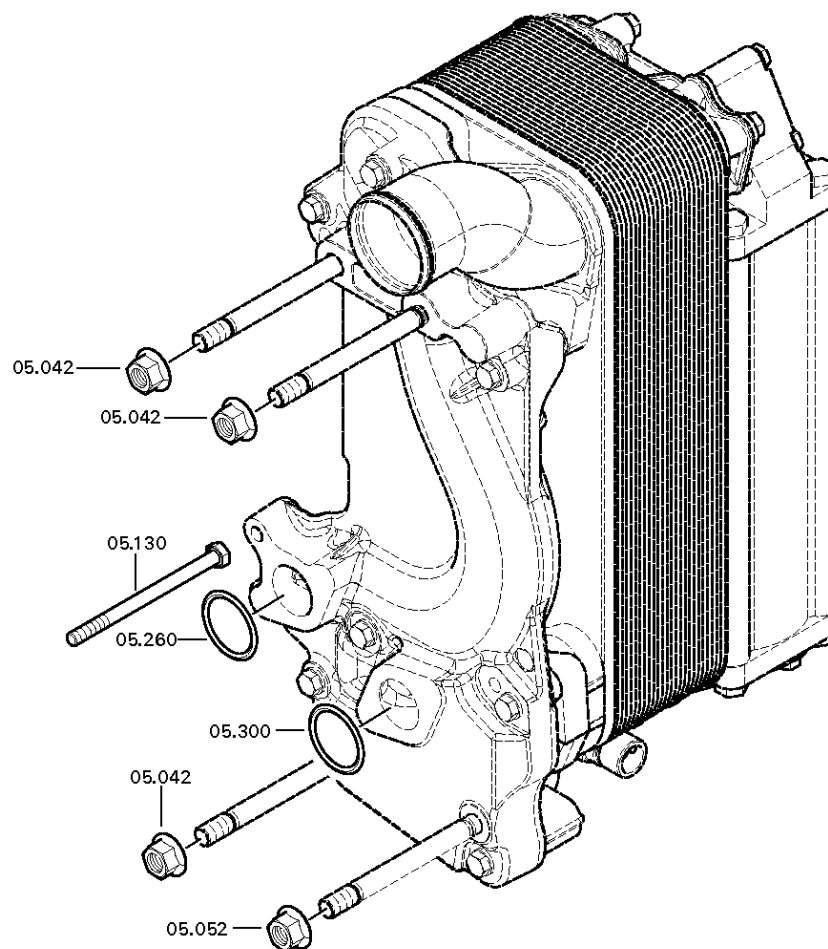
Material-assembly-group-no: 6085.102.821

12 AS 2301 IT (текущая дата: 14.01.2013) /

CONTROL UNIT







## Plant

Page 1 from 1

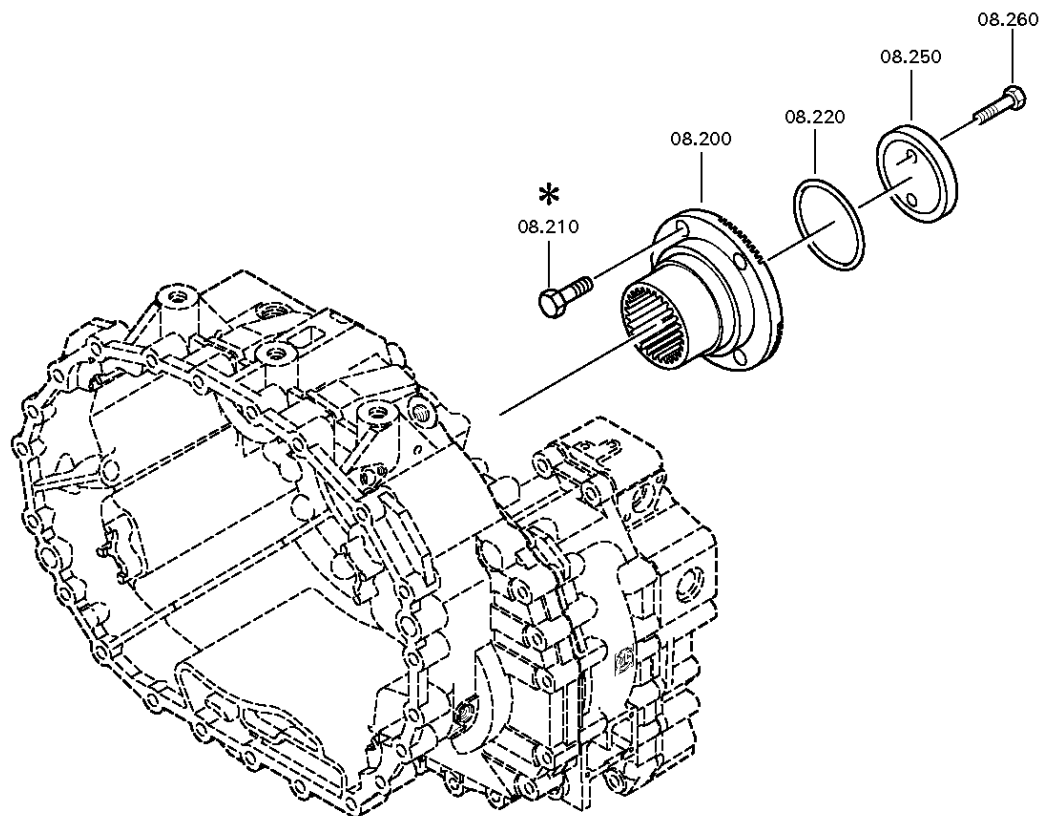
Material number: 1327.040.034

Plant: 078.08.04-1

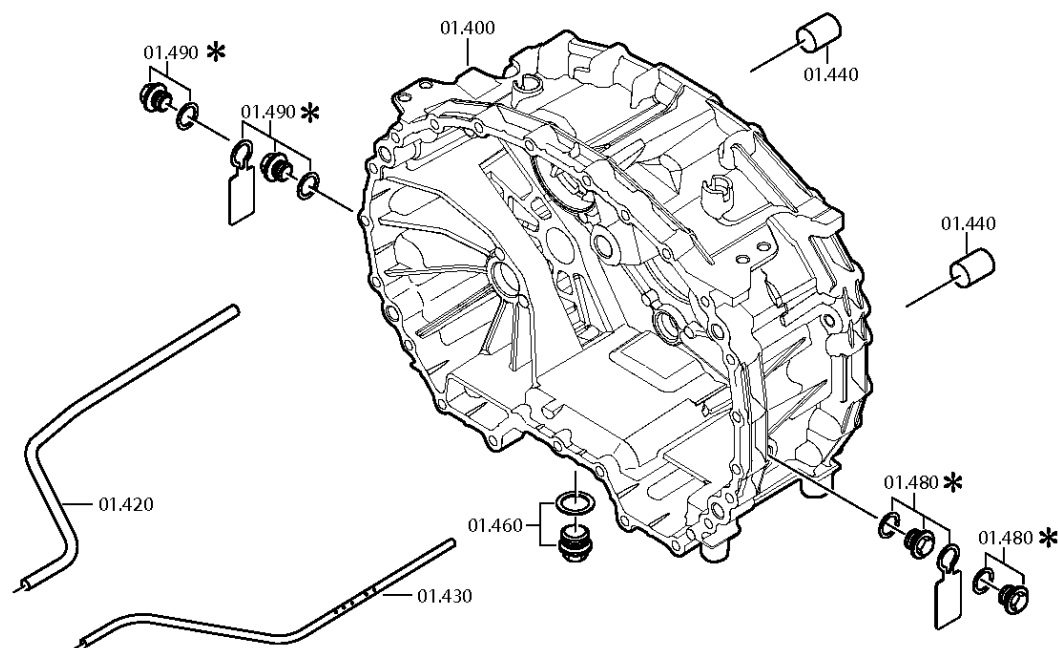
Material-assembly-group-no: 6085.108.016

12 AS 2301 IT (текущая дата: 14.01.2013) /

OUTPUT





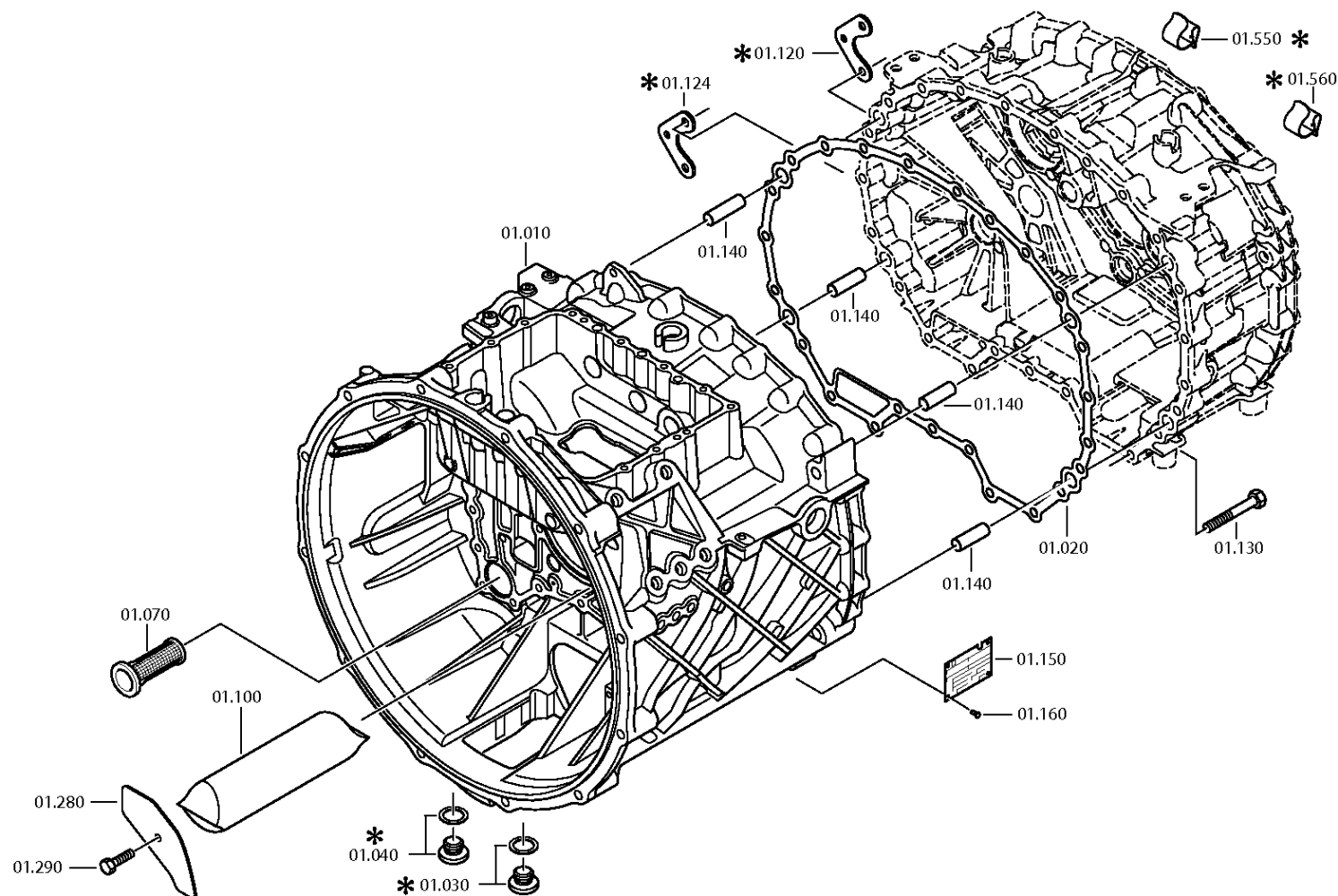


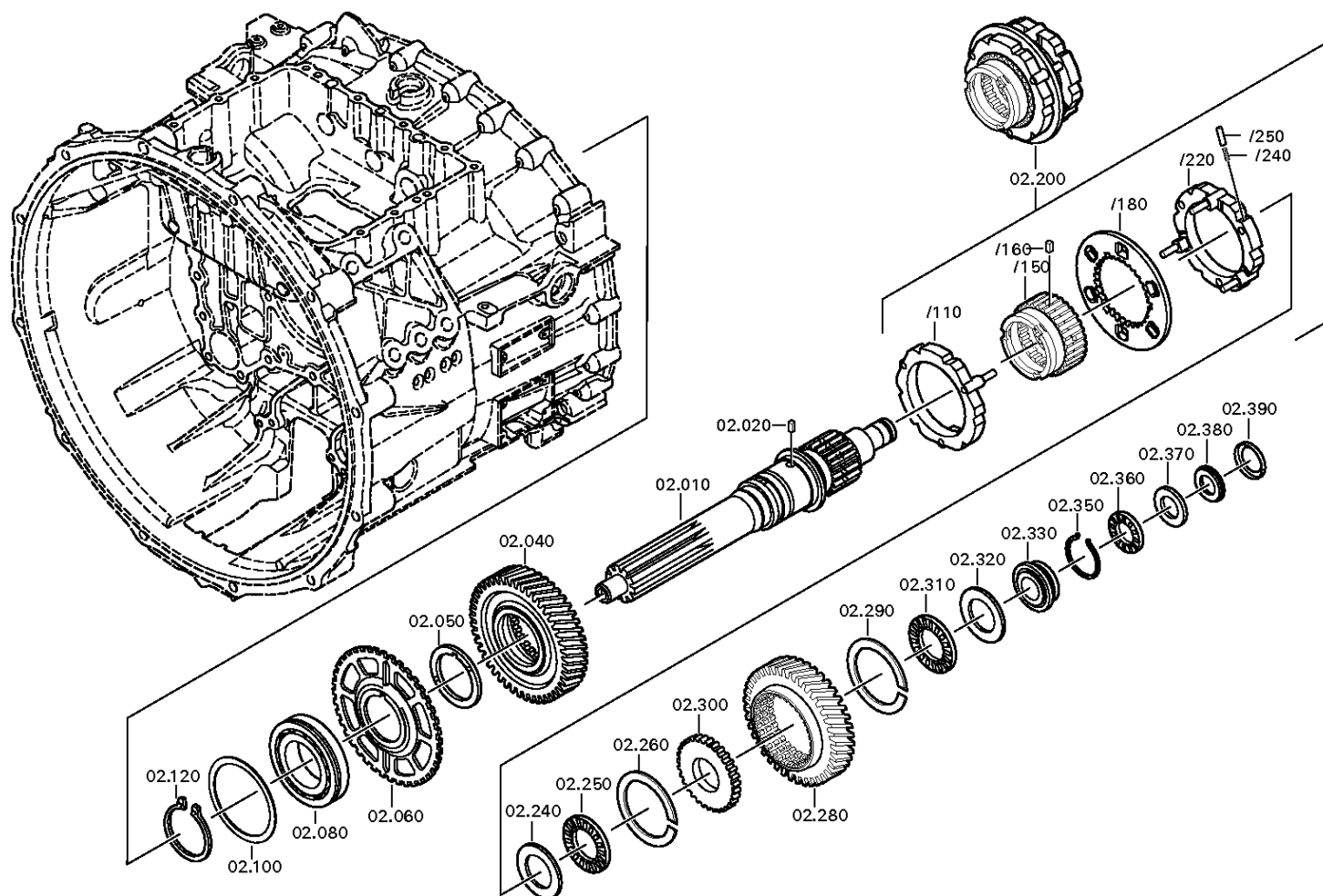
# Plant

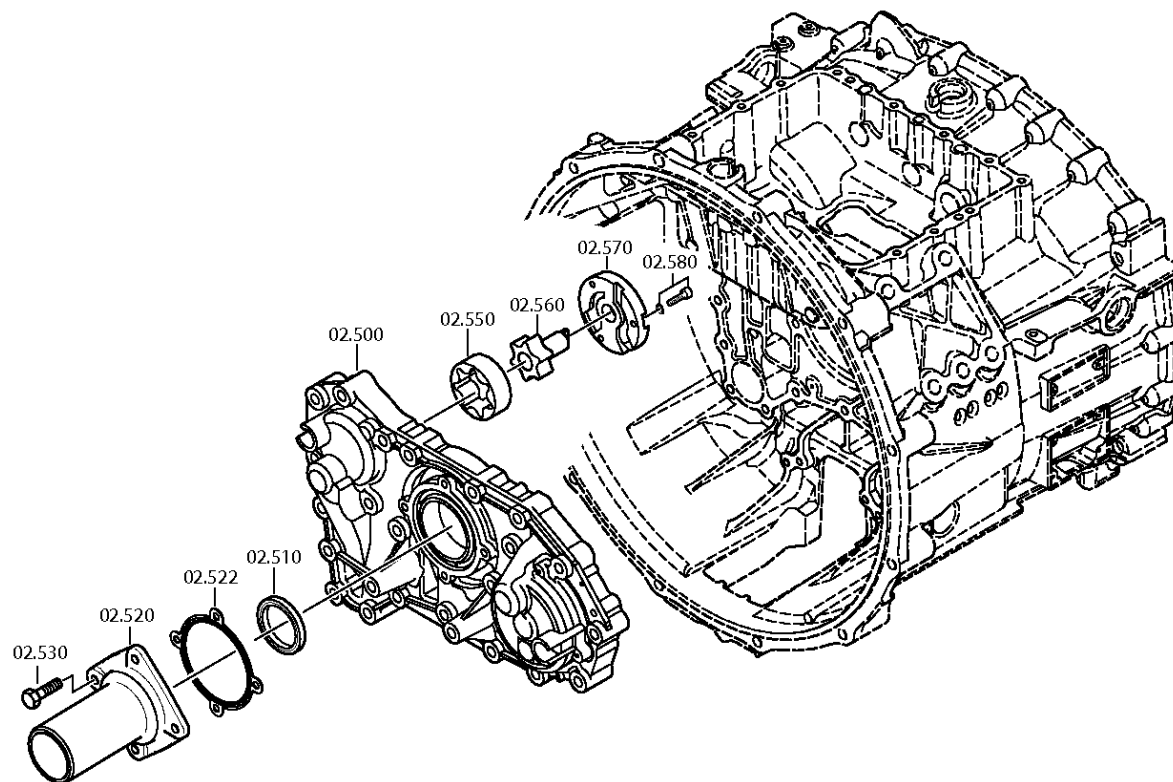
Page 2 from 2

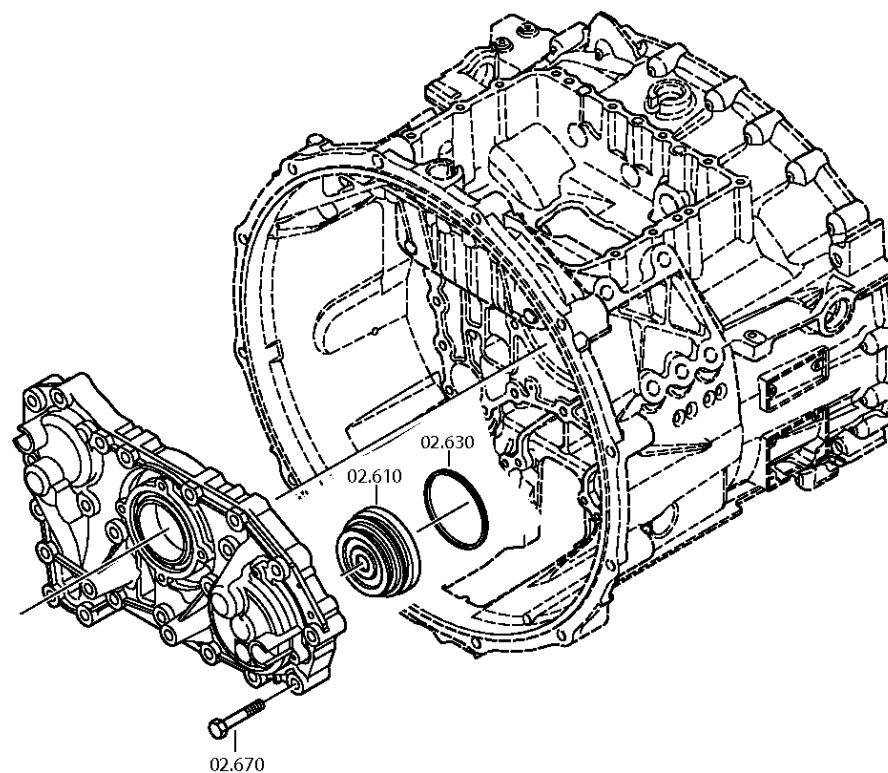
Material number: 1327.001.062  
Plant: 105.01.05-1  
**GEARBOX HOUSING**

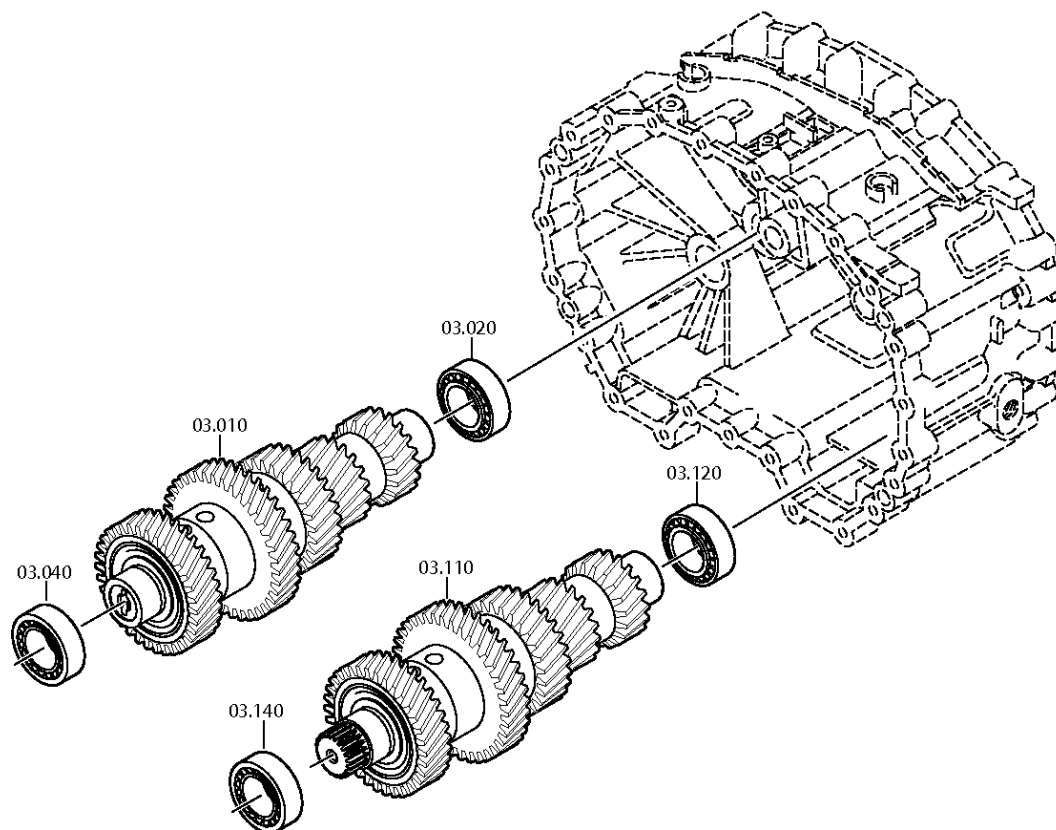
12 AS 2301 IT (текущая дата: 14.01.2013) /  
**GEARBOX HOUSING**

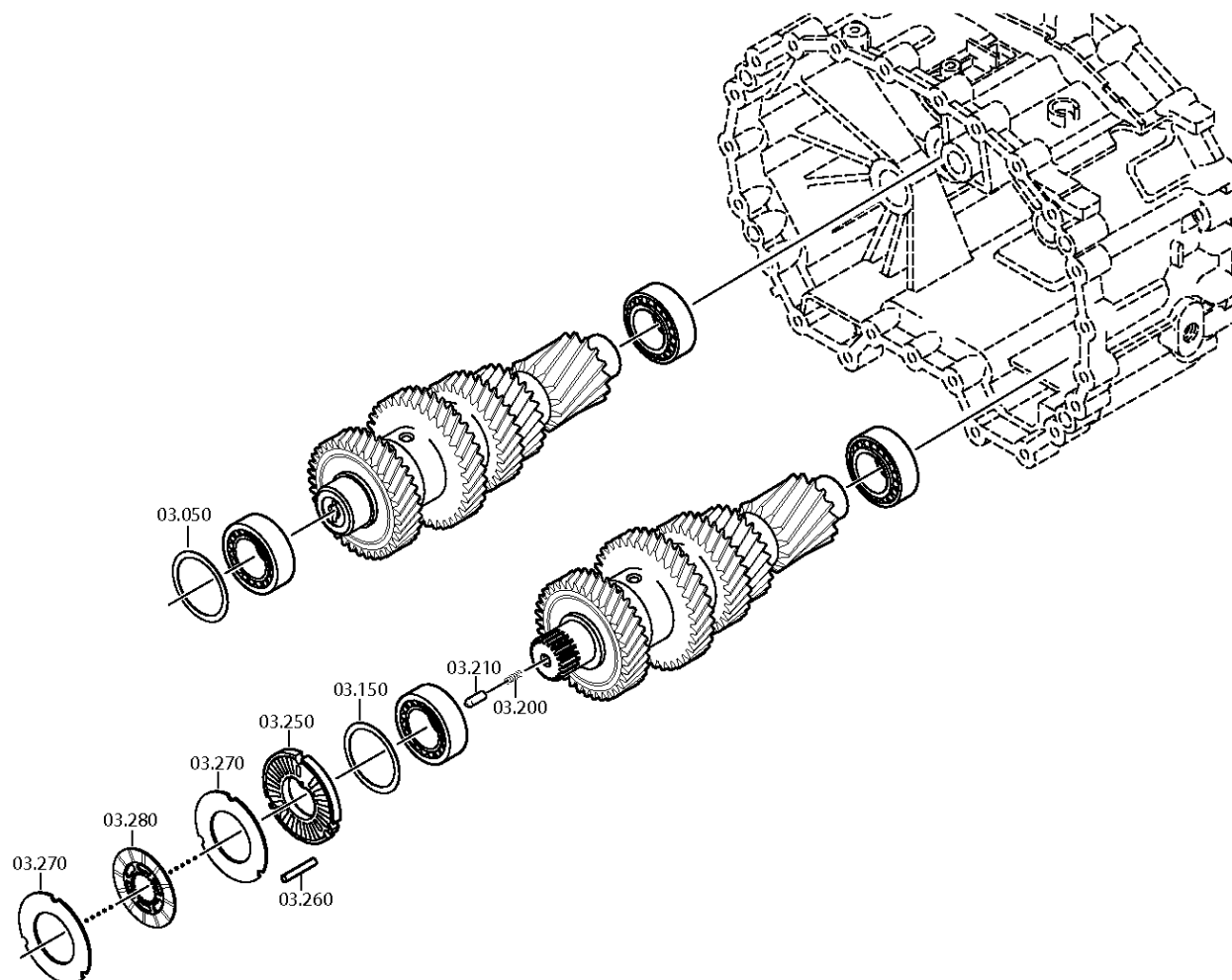


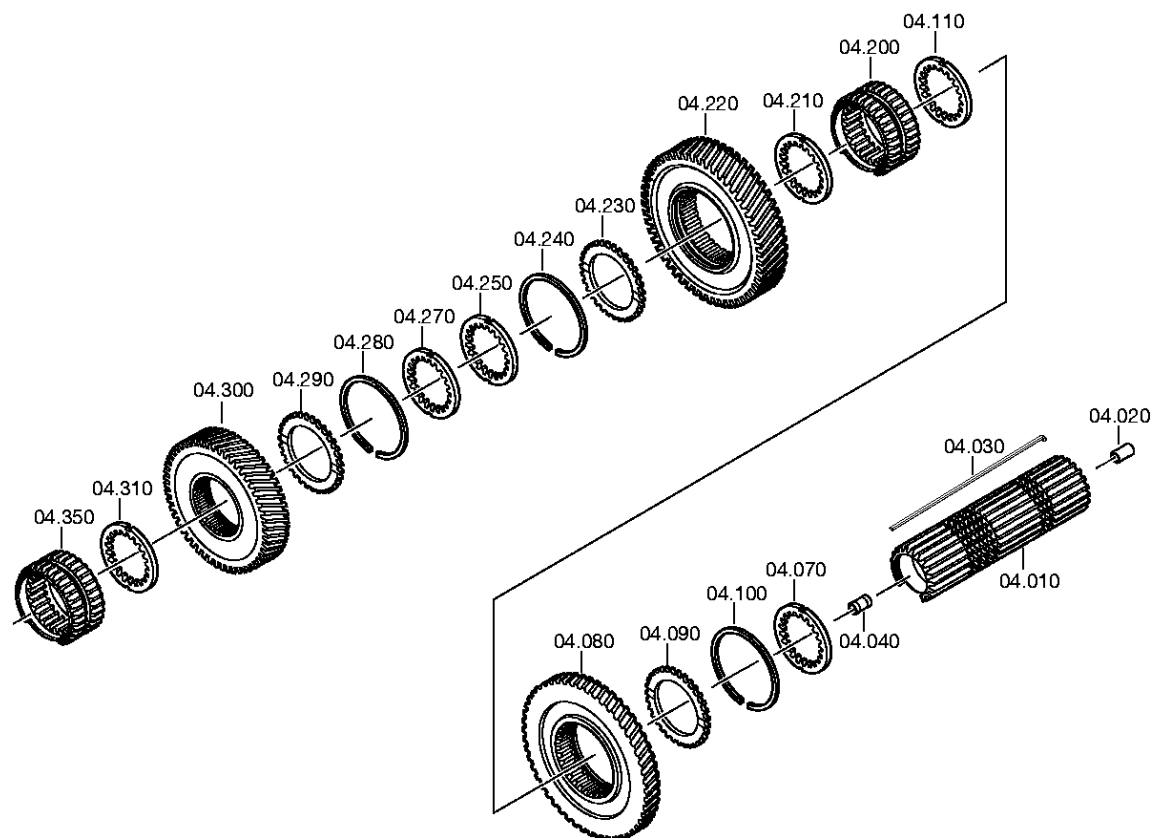














# Plant

Page 1 from 1

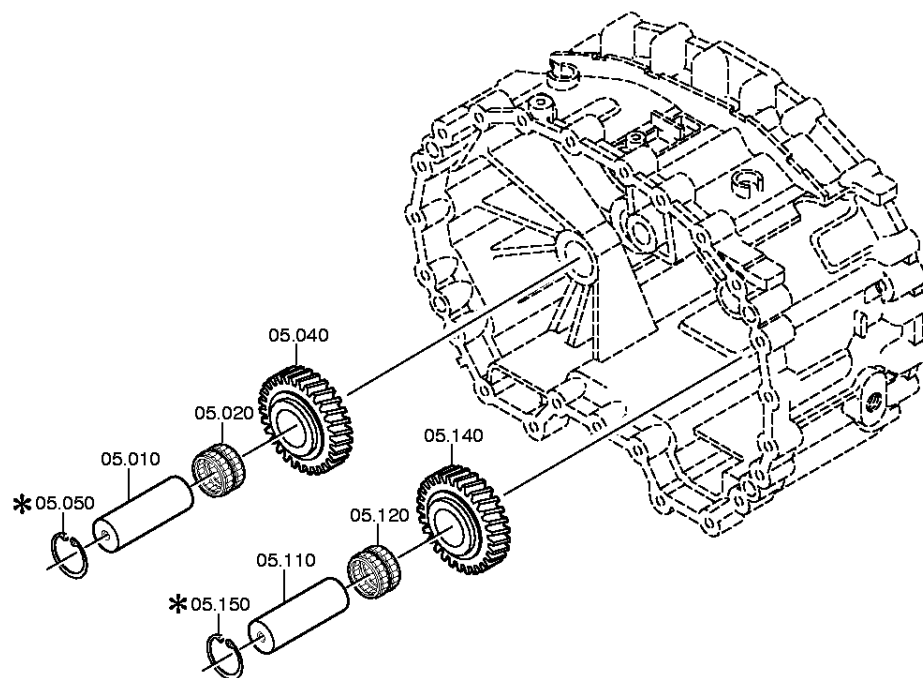
Material number: 1327.001.062

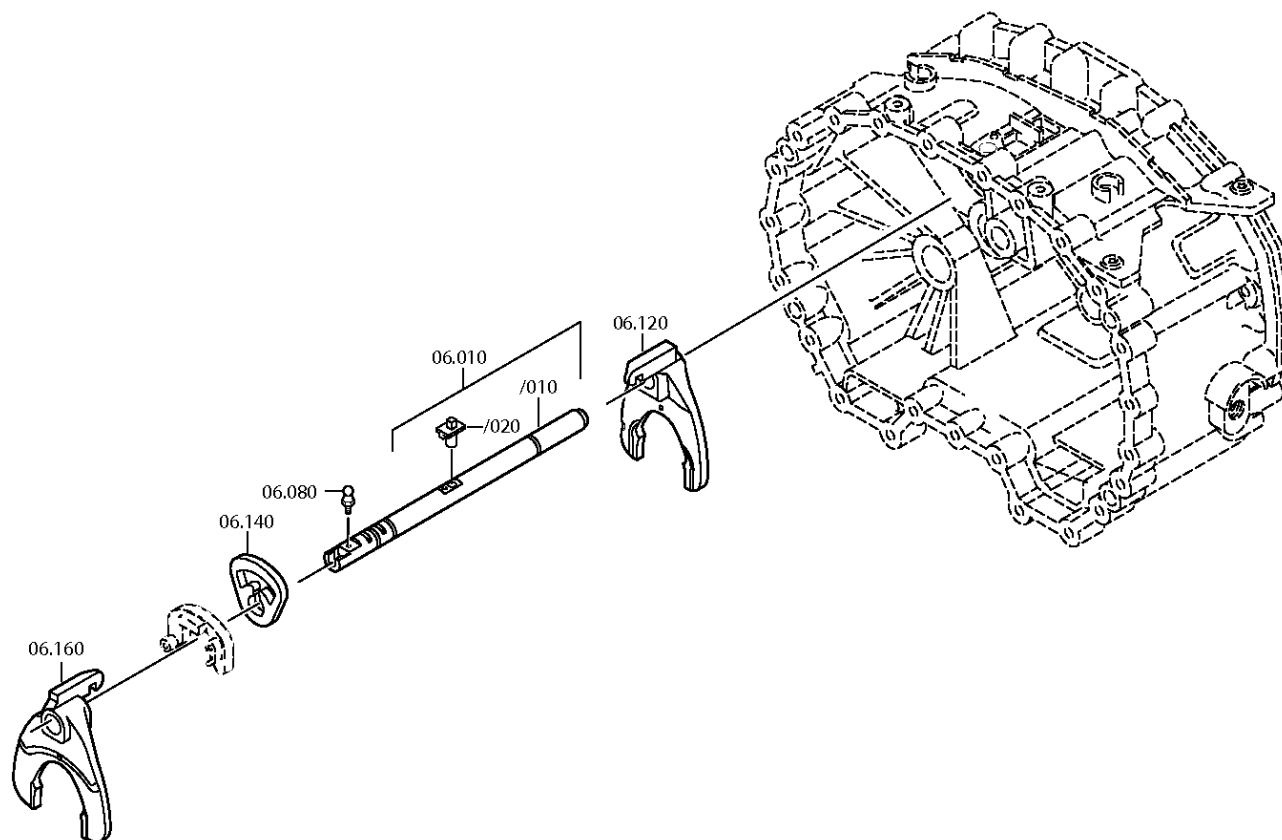
Plant: 105.05.01-1

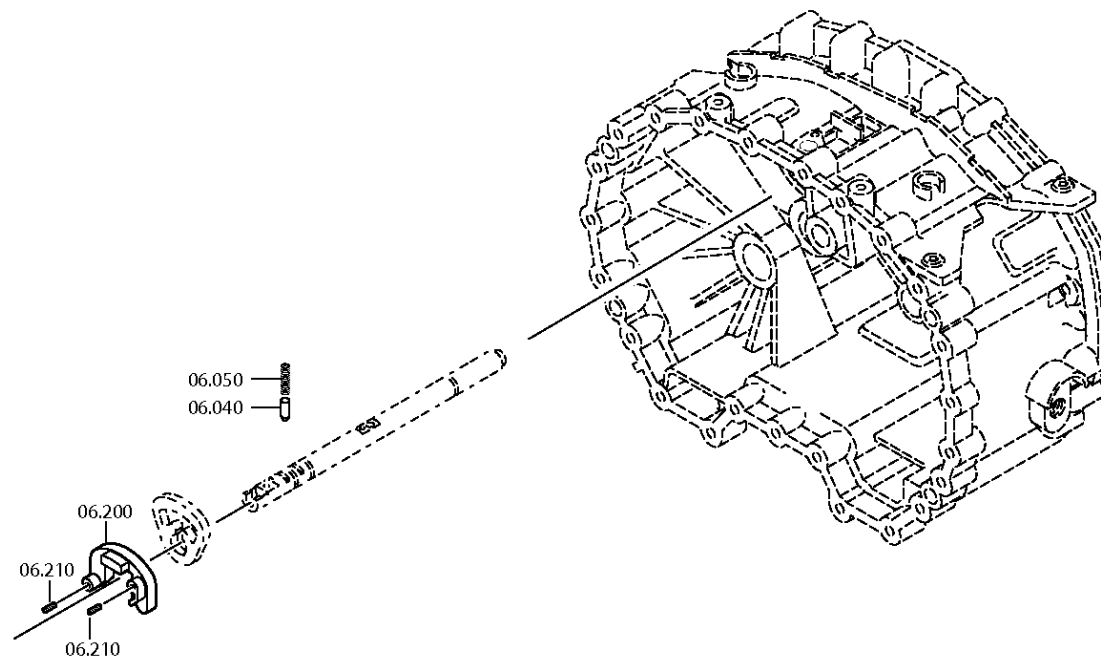
Material-assembly-group-no: 1328.105.005

12 AS 2301 IT (текущая дата: 14.01.2013) /

RETURN







# Plant

Page 1 from 1

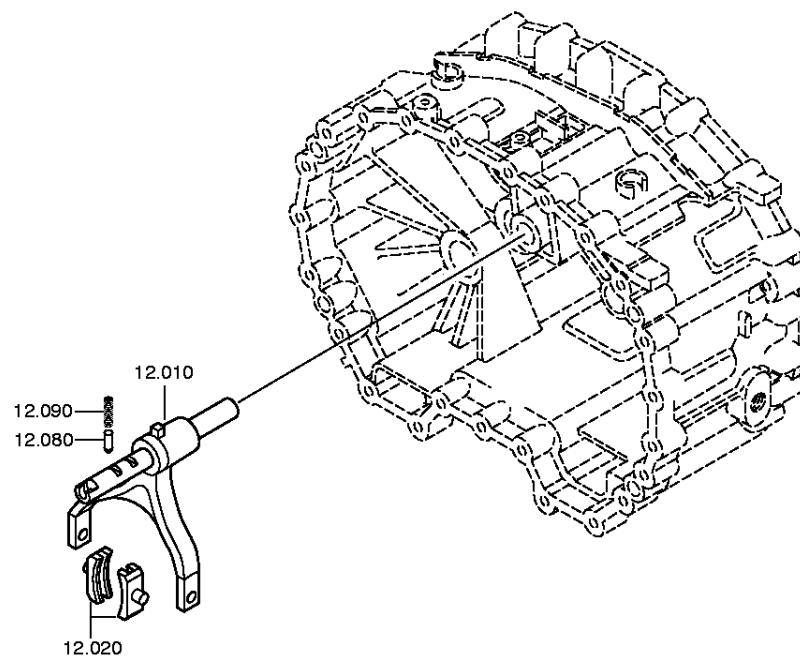
Material number: 1327.001.062

Plant: 105.40.05-1

Material-assembly-group-no: 1328.112.004

12 AS 2301 IT (текущая дата: 14.01.2013) /

GV-SHIFT SYSTEM

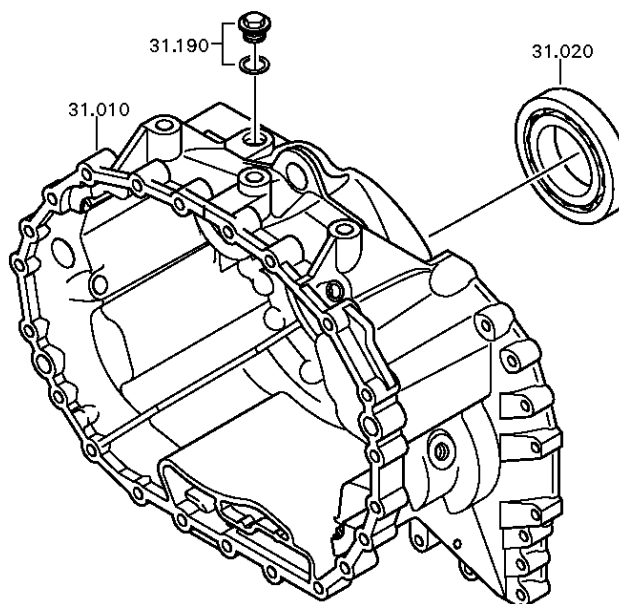


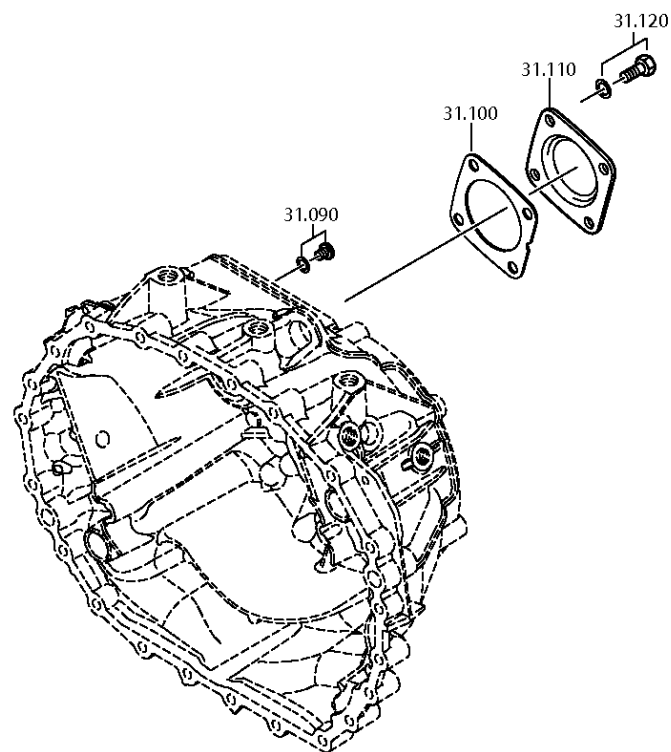
## Plant

Page 1 from 4

Material number: 1327.001.062  
Plant: 069.43.04-1  
GP HOUSING

12 AS 2301 IT (текущая дата: 14.01.2013) /  
GP HOUSING



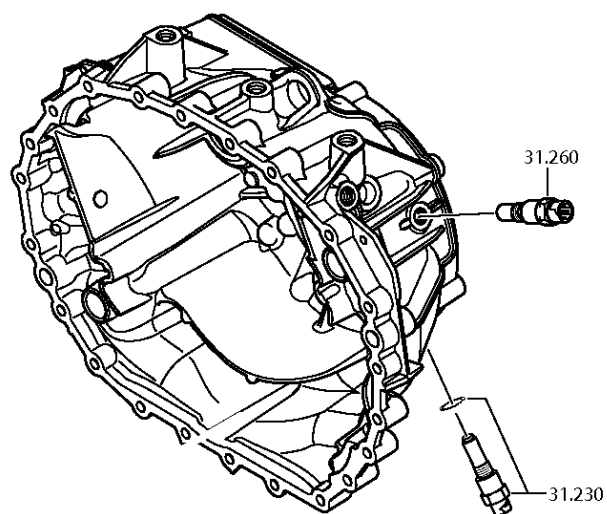


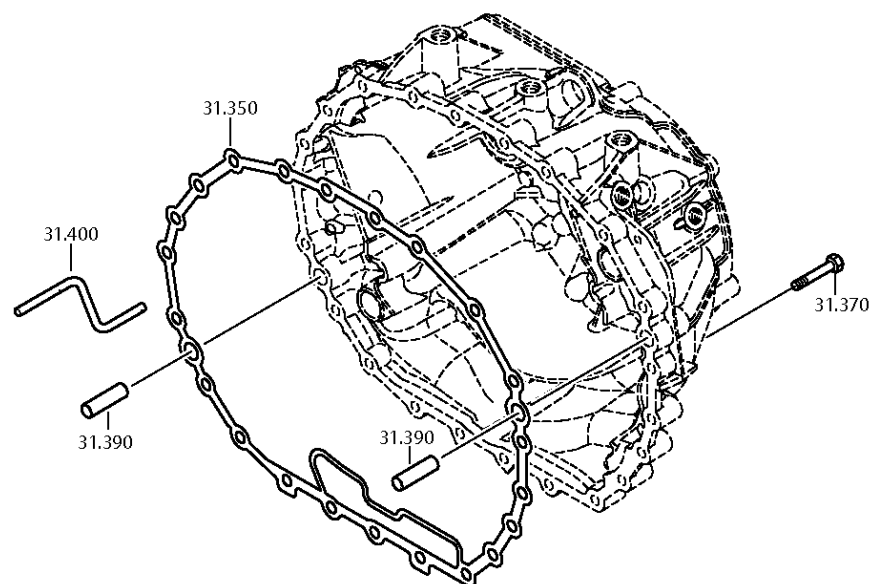
## Plant

Page 3 from 4

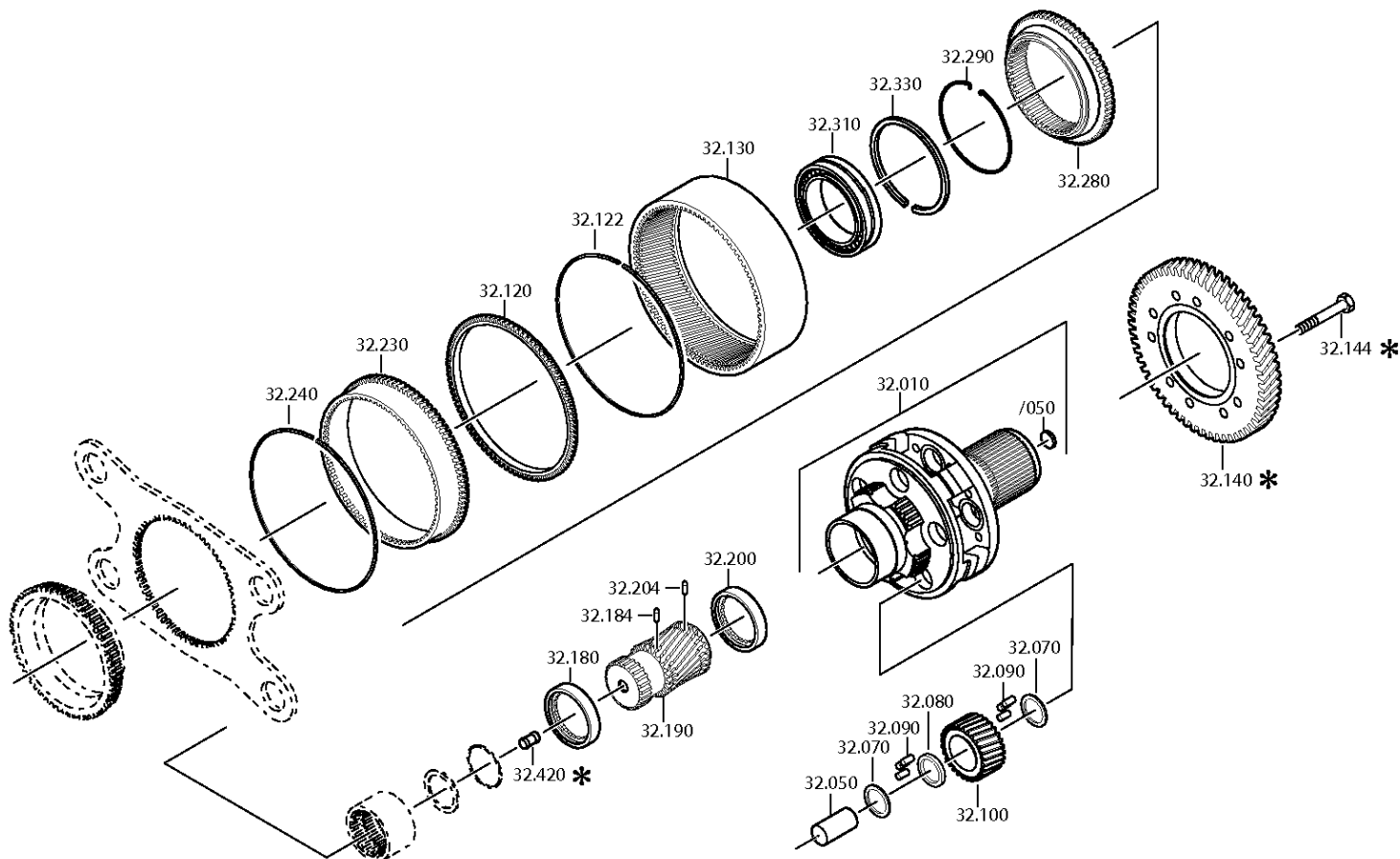
Material number: 1327.001.062  
Plant: 105.43.42-1  
GP HOUSING

12 AS 2301 IT (текущая дата: 14.01.2013) /  
GP HOUSING







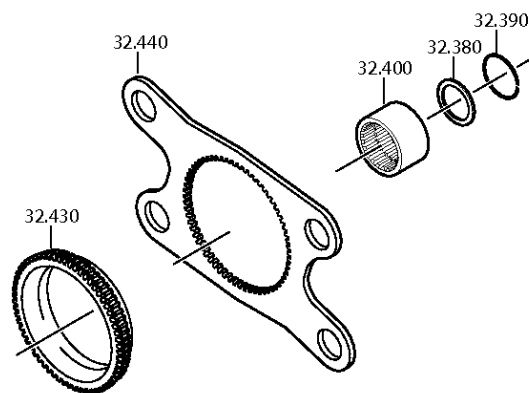


## Plant

Page 2 from 2

Material number: 1327.001.062  
Plant: 105.44.80-1  
PLANETARY DRIVE

12 AS 2301 IT (текущая дата: 14.01.2013) /  
PLANETARY DRIVE



# Plant

Page 1 from 1

Material number: 1327.001.062

Plant: 105.45.01-1

Material-assembly-group-no: 1328.133.003

12 AS 2301 IT (текущая дата: 14.01.2013) /

SYNCHRONIZER

