



Spare Parts Catalog

16 AS 2231 TD

Material number: 1328.042.009

Current date: 17.09.2013

ZF Friedrichshafen AG
Hauptverwaltung
80038 Friedrichshafen
Deutschland

Telefon: +49 7541 77-0

Telefax: +49 7541 77-908000

www.zf.com

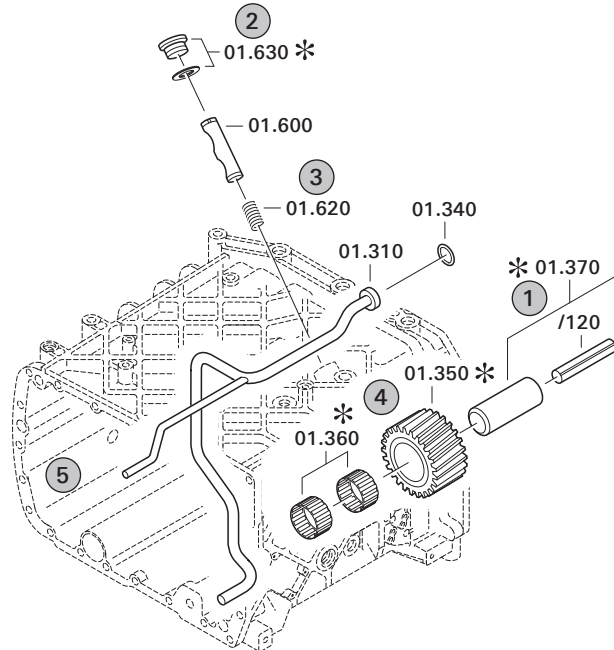
zuständiges Werk:
Friedrichshafen

Notes relating to the spare parts catalog

Setup of the spare parts catalog

- Cover sheet
- Technical Cover (only in SDM print)
- Overview of figures
- Figure
- Associated parts list
- Next figure
- Associated parts list
- ...

Figure and parts list



Overview of figures

Bildtafel Figure	Sachnummer Product number	Benennung (Description)	Technische Info Technical info	Description (Benennung)	Menge Quantity	Einheit Unit
068.08.17	1316.170.001	AUSLEGER	WL	SHIFT TURRET	1	Stk
068.08.06	1316.170.031	DECKEL	WL*H-H*VM	COVER	1	Stk
068.08.14	1316.170.808	DECKEL	WL*AUSL+GEH*H-H*HF160N	COVER	1	Stk
08	1316.170.441	ANSCHLUSSTEILE	WL*NG-VORB*RG-SCHL*168N*BAJONETT	CONNECTING PARTS	1	Stk

The "gap" indicates that there is no separate graphics panel (poster) for this assembly
The parts of this assembly are shown with the same mid-section number on the figure

1 Positions and subpositions

Pos.	Sachnummer Product number	Benennung (Description)	Technische Info Technical info	Description (Benennung)	Menge Quantity	Einheit Unit
0370	1315.201.054	RUECKLAUFBOLZEN	KPL.16S151*SG*L= 79	REV.IDLER SHAFT	1	Stk
/0120	0631.329.293	SPANNSTIFT		SLOT. PIN	1	Stk

Positions marked with "/" are the individual items of a completion
For example: Position 0370 contains a centering pin with the position /0120

2 Combinations with standardized parts

Pos.	Sachnummer Product number	Benennung (Description)	Technische Info Technical info	Description (Benennung)	Menge Quantity	Einheit Unit
0630		VERSCHL.SCHR.		SCREW PLUG	1	Stk
	0636.302.067	VERSCHL.SCHR.		SCREW PLUG	1	Stk
	0634.801.249	DICHTRING	A 26 X 31	SEALING RING	1	Stk

The parts list shows the components included in the combination of standardized parts

3 Depiction of position/item number on the figure and in the parts list

01.620 - on the figure 01 relates to the assembly in which the position is included. Due to program-related reasons, it is shown on the figure.

0620 - in the parts list

Pos.	Sachnummer Product number	Benennung (Description)	Technische Info Technical info	Description (Benennung)	Menge Quantity	Einheit Unit
0620	0732.040.736	DRUCKFEDER		COMPRESSION SPRING	1	Stk

4 *-Positions

Positions marked with an * are optional i.e. inclusion in the parts list is not mandatory.
The following note is shown on the figure

je nach Stücklistenausführung
depending on spec. number
*
suivant la nomenclature
secondo la distinta base

5 Parts, dotted display

Parts with dotted display on the figure are only used for orientation of other parts



Pos.	Information	Amendment number
001	Use case -----	
002	Customer DAF TRUCKS N.V.	
003	City EINDHOVEN	
004	DUNS 41-579-9402	
005	Classification use case -----	
006	APPROVAL NOTE 1 ERSTEINBAU*UEBERPRUEFUNG ERFORDERLICH	
008	Product description -----	
009	ATTACHED AGRREGATES 1 IT ASTRONIC	
011	OUTER DIA. OUTPUT FLANGE RA 180 mm	
013	NO.OF SCREWS OUTPUT FLANGE RA 4	
015	DIA. THREAD OUTPUT FL. SCR. RA M14	
017	THREAD LENGTH OUTP.FL SCREW RA 50 mm	
018	REF. LENGTH OUTPUT FLANGE RA 109.5 mm	
019	DIMENSION OUTPUT FLANGE SCREW M14X2X50	
020	CONNECT.LENGTH, OUTPUT FLANGE 109.5 mm	
022	NUMBER OF FLANGE BOLTS 4	
023	OUTSIDE DIA., OUTPUT FLANGE 180 mm	
025	ATTACHM.VAR,EMERG.STRG PUMP WITHOUT GROOVE	
032	ATTACHM.POS.HEAT EXCHANGER BACK UNDERSIDE	
033	1.INST.INSTRUCTION HEAT EXCHANGER WITH	
034	OIL CAPACITY, GEARBOX 23 dm3	
035	OIL FILL VARIANT EX WORKS	
036	OIL GRADE PERMISSIBLE ACC. TO TE-ML02	
037	CODING OUTER CONSERVATION KA1+2	
038	SCOPE OUTER CONSERVATION T	
039	CODING INNER CONSERVATION KI1	
040	CONSERVATION SPECIFICATION ZFN 916	
041	NUMBER OF PLUGS 15	
042	CODIERUNG STOPFENANZAHL	
043	COLOR NOT	
047	TRANSMISSION VARIANT INTARDER	
048	NUMBER OF GEARS 16	
049	CHECK INFO HG GESCHALTET NACH FUNKTIONSL.	



Pos.	Information	Amendment number
050	HINWEIS PRUEFPROGRAMM 16GEAR DD	
052	CLEANNESS SPECIFICATION ZFN 5015	
073	CLEANNESS SCALE NUMBER 1 20	
074	CLEANNESS SCALE NUMBER 2 16	
075	Documents -----	
076	16-GANG-GETR. Assembly 1328.642.001	
077	16-GANG-GETR. Drawing 1328.642.001	
078	1328.189.002 Drawing 1328.189.002	
079	Alias ID -----	
080	DAF TRUCKS N.V. 1681299	

Plant

Page 1 from 1

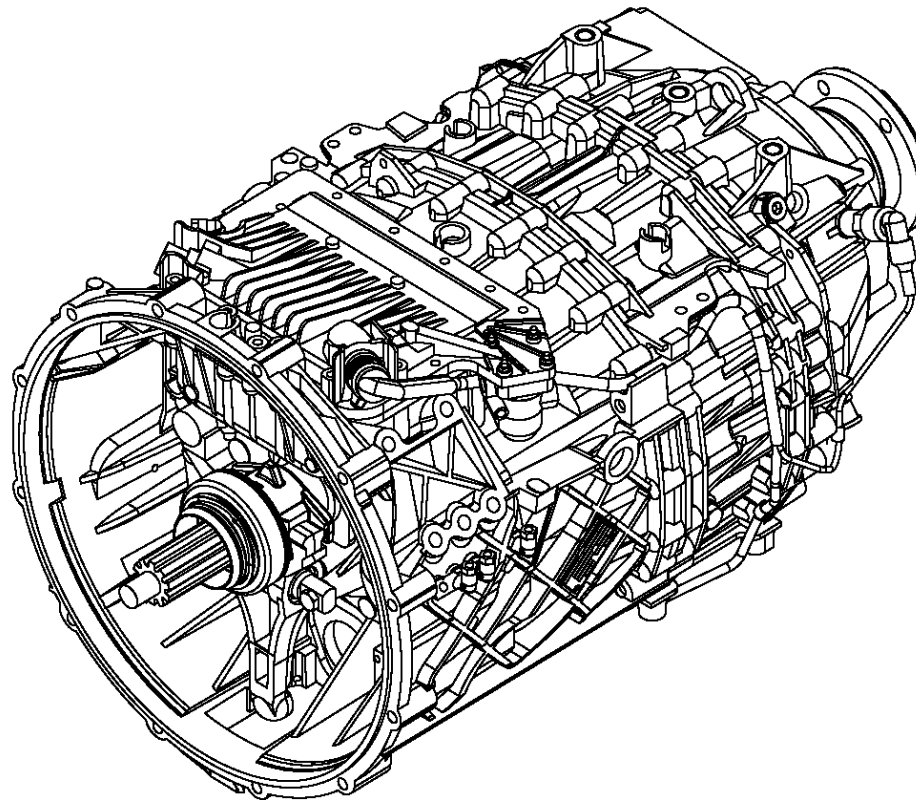
Material number: 1328.042.009

Plate: 105.A1.01-1

Material-assembly-group-no: 1328.003.004

16 AS 2231 TD /

16 AS TD IT



Plant

Page 1 from 1

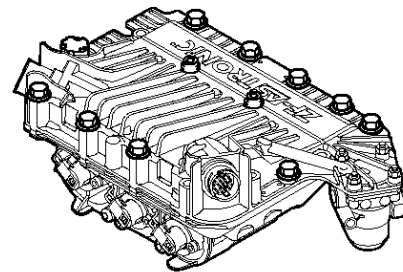
Material number: 1328.042.009

Plate: 105.B3.01-1

Material-assembly-group-no: 6009.074.700

16 AS 2231 TD /

GS 3



Plant

Page 1 from 1

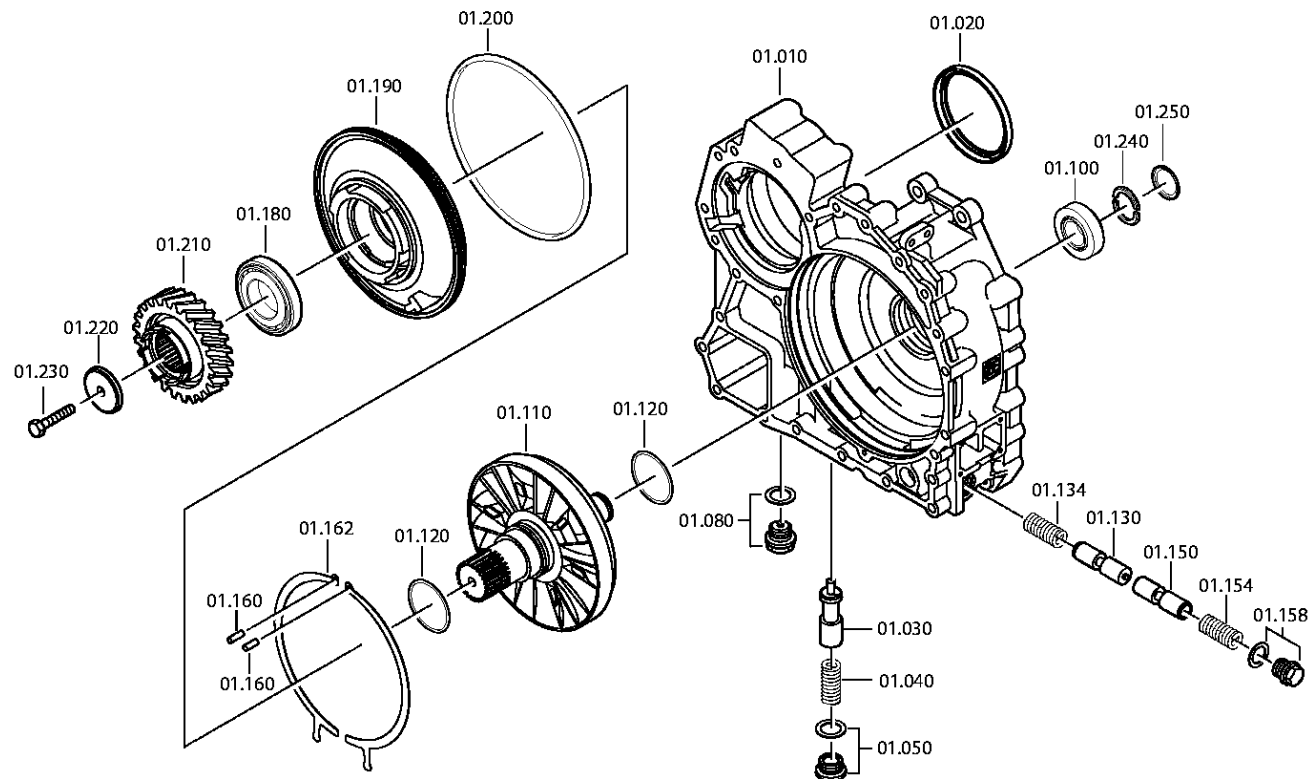
Material number: 1328.042.009

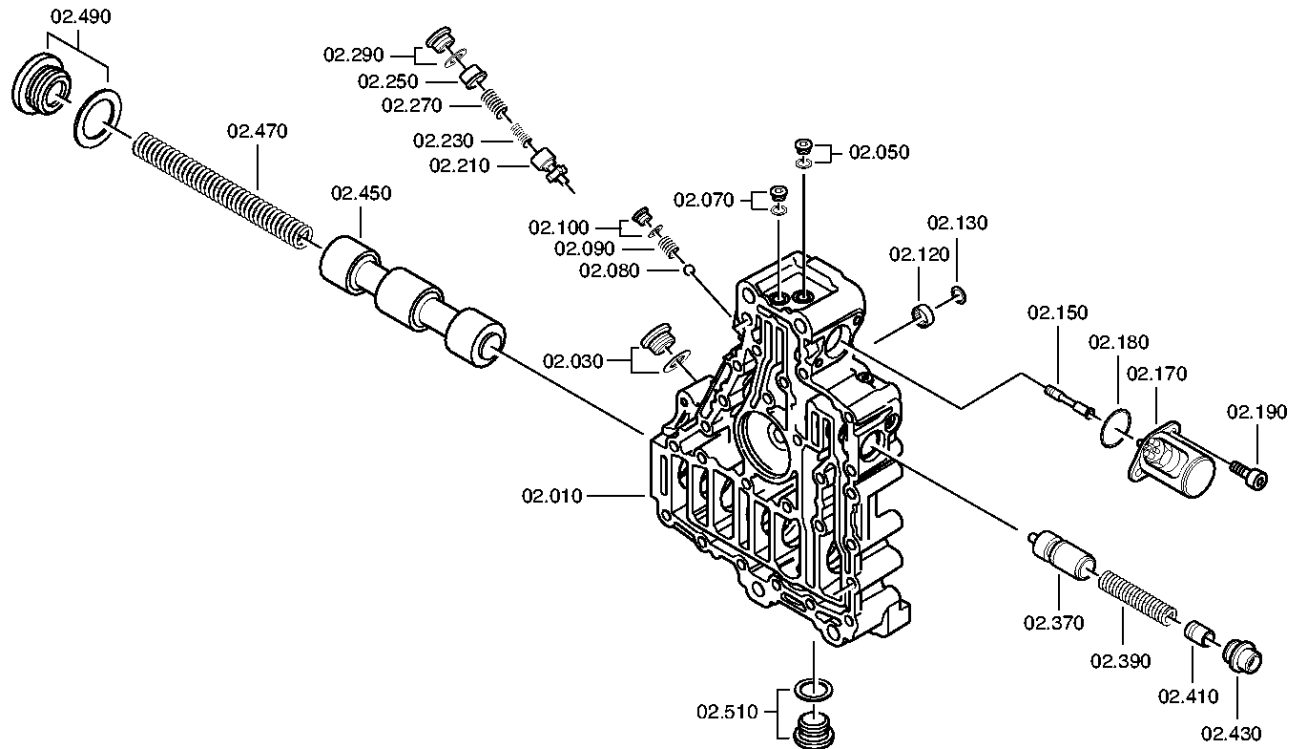
Plate: 078.01.11-1

Material-assembly-group-no: 6085.101.039

16 AS 2231 TD /

HOUSING



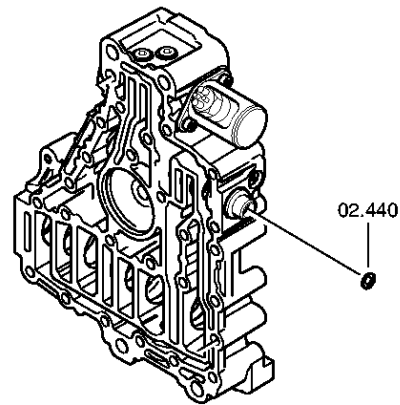


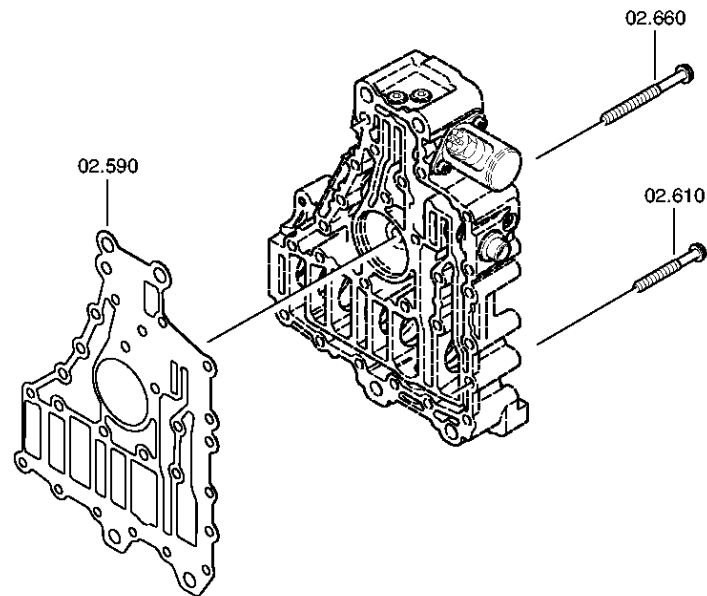
Plant

Page 2 from 3

Material number: 1328.042.009
Plate: 078.02.79-1
CONTROL UNIT

16 AS 2231 TD /
CONTROL UNIT



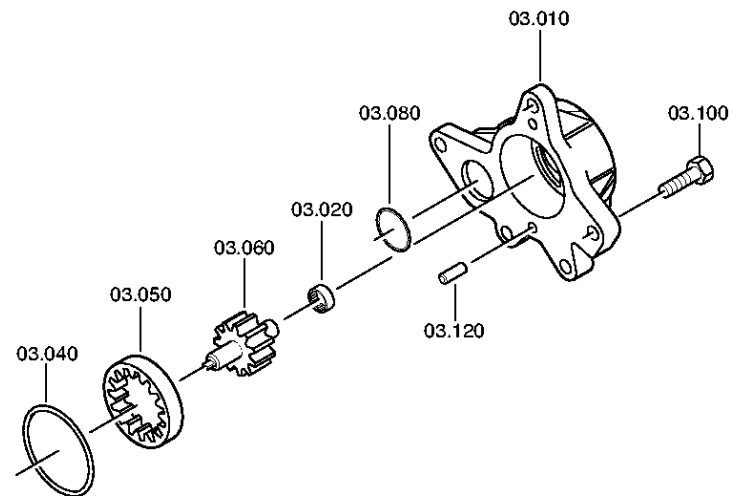


Plant

Page 1 from 2

Material number: 1328.042.009
Plate: 078.03.01-1
PUMP

16 AS 2231 TD /
PUMP

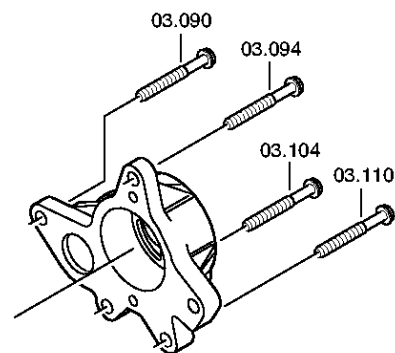


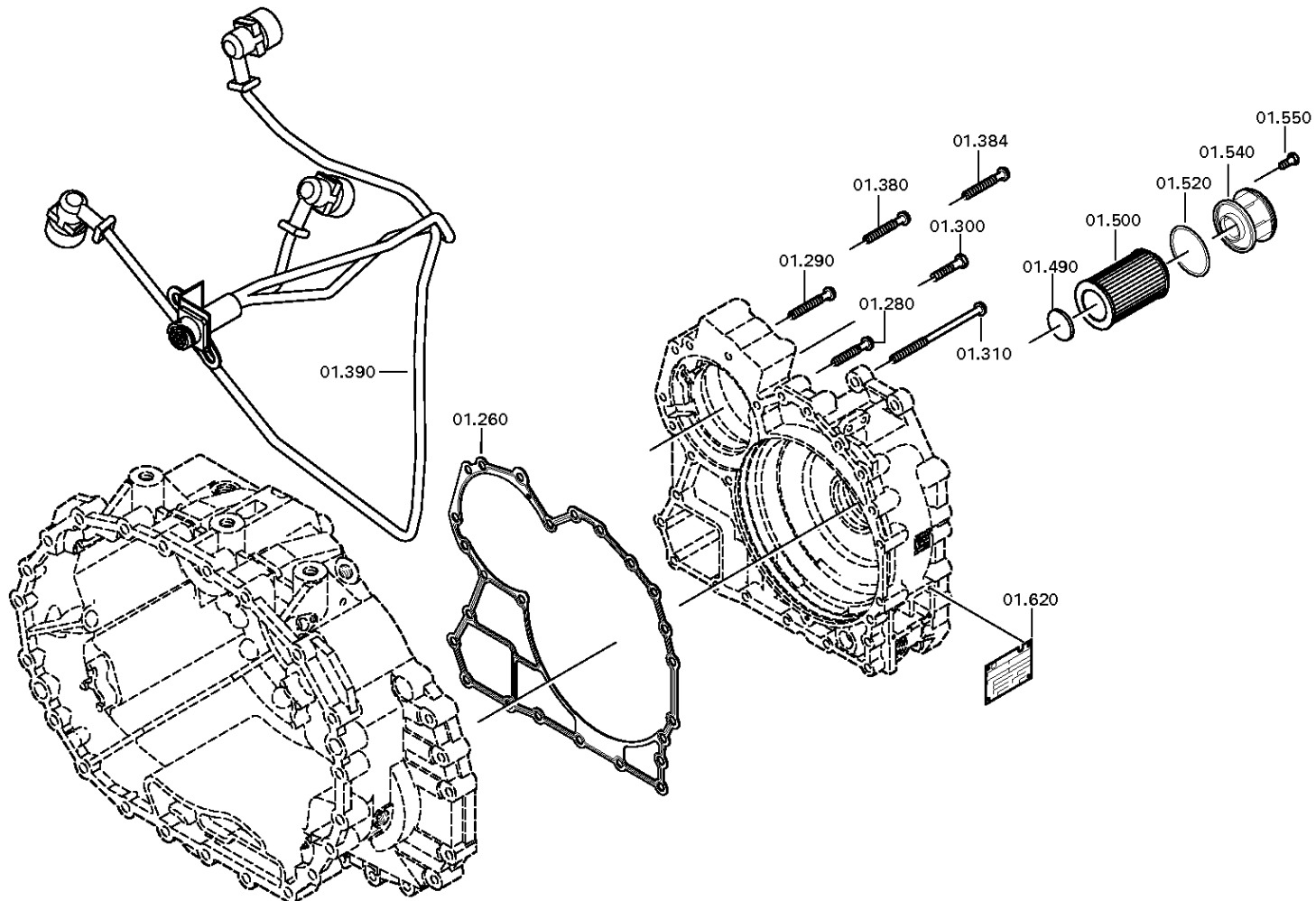
Plant

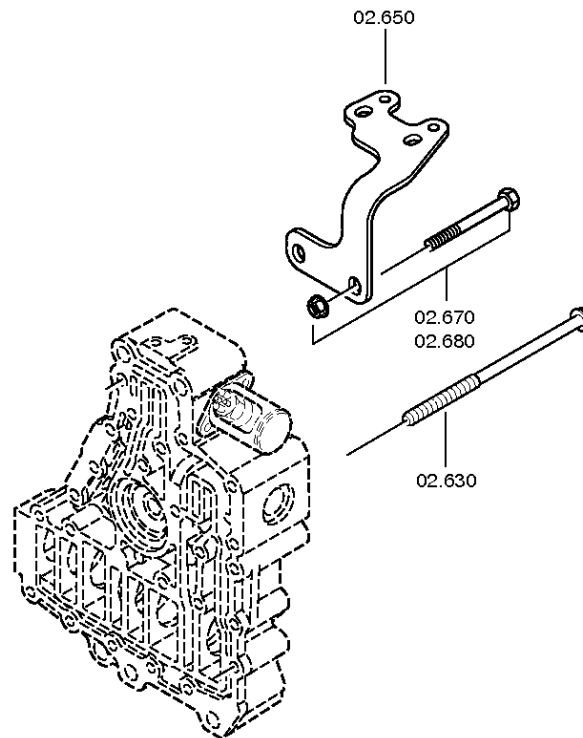
Page 2 from 2

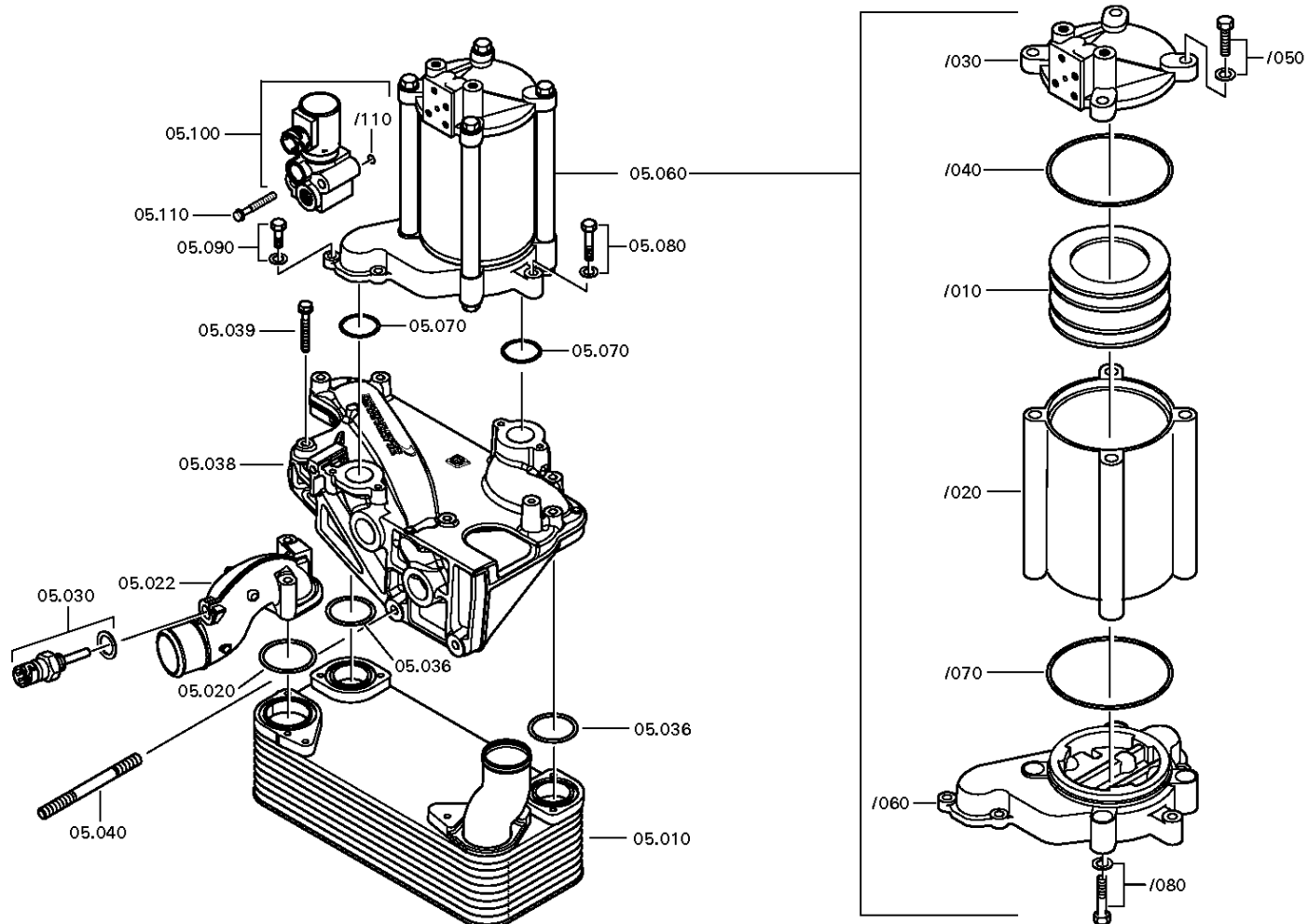
Material number: 1328.042.009
Plate: 078.03.80-1
PUMP

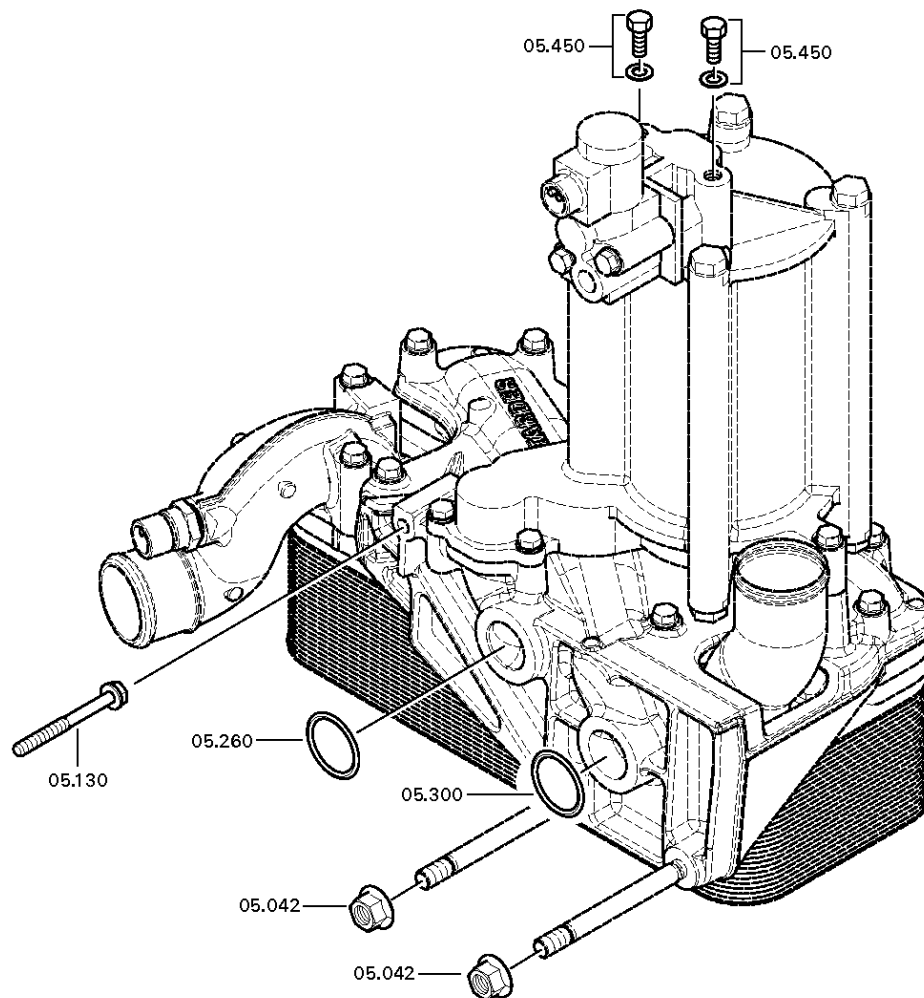
16 AS 2231 TD /
PUMP

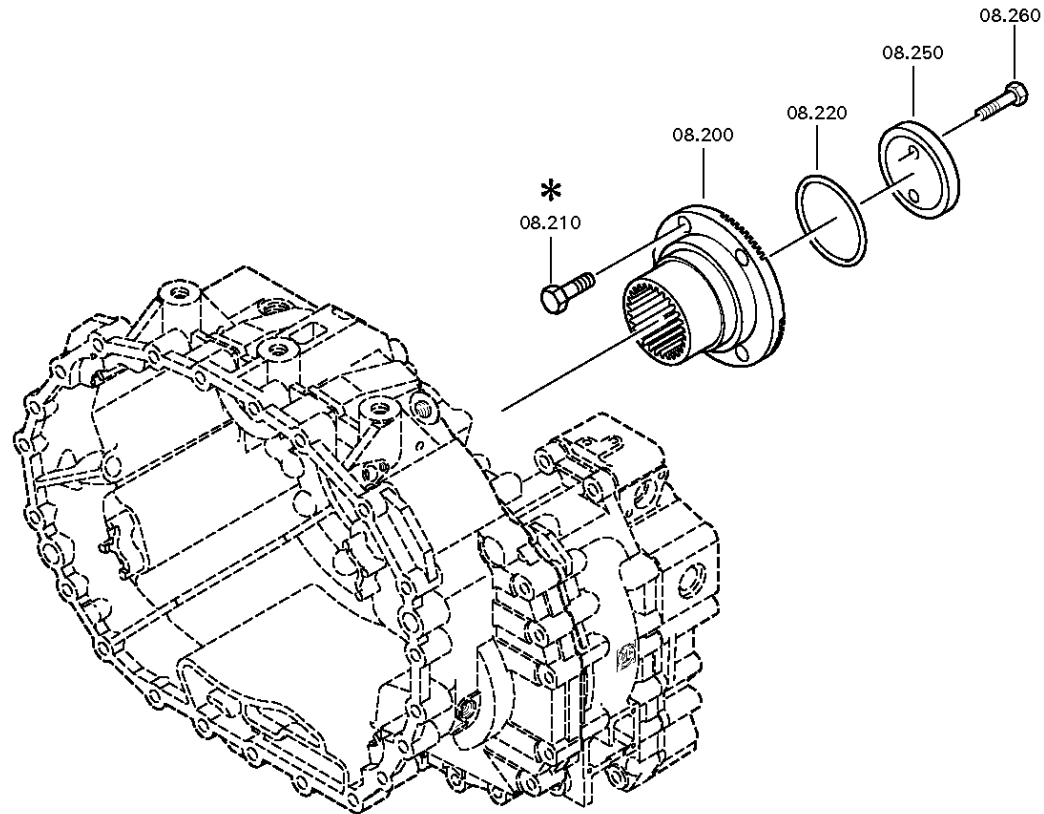


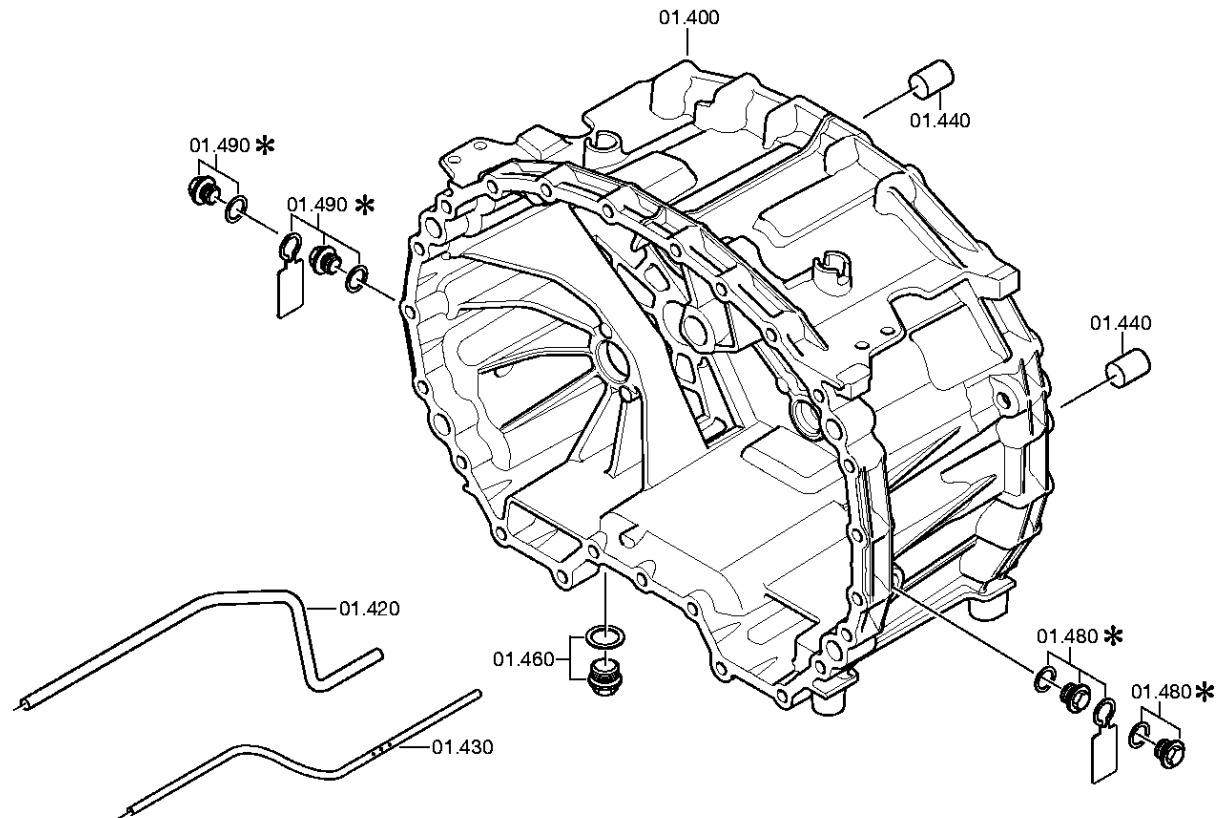


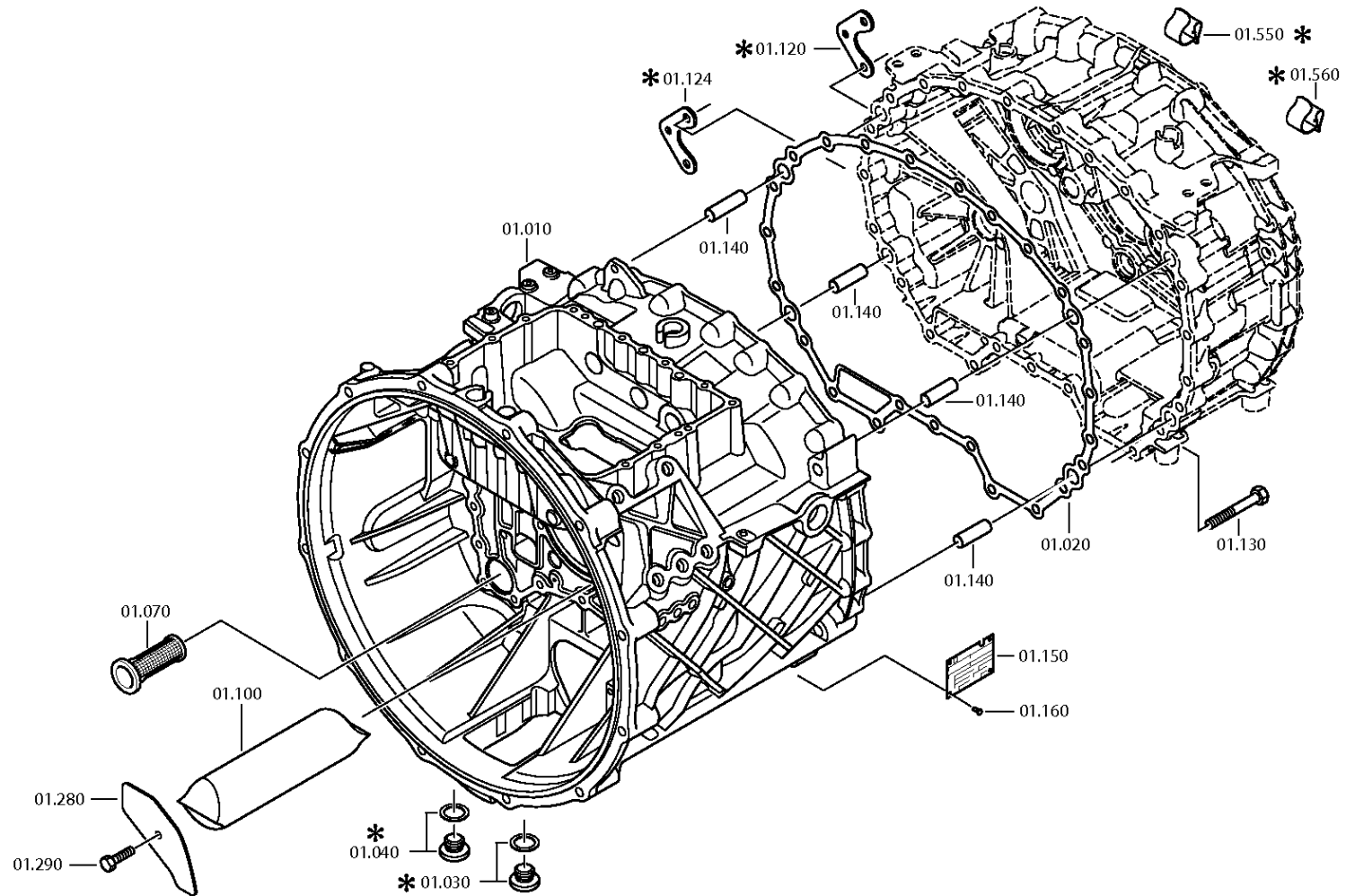


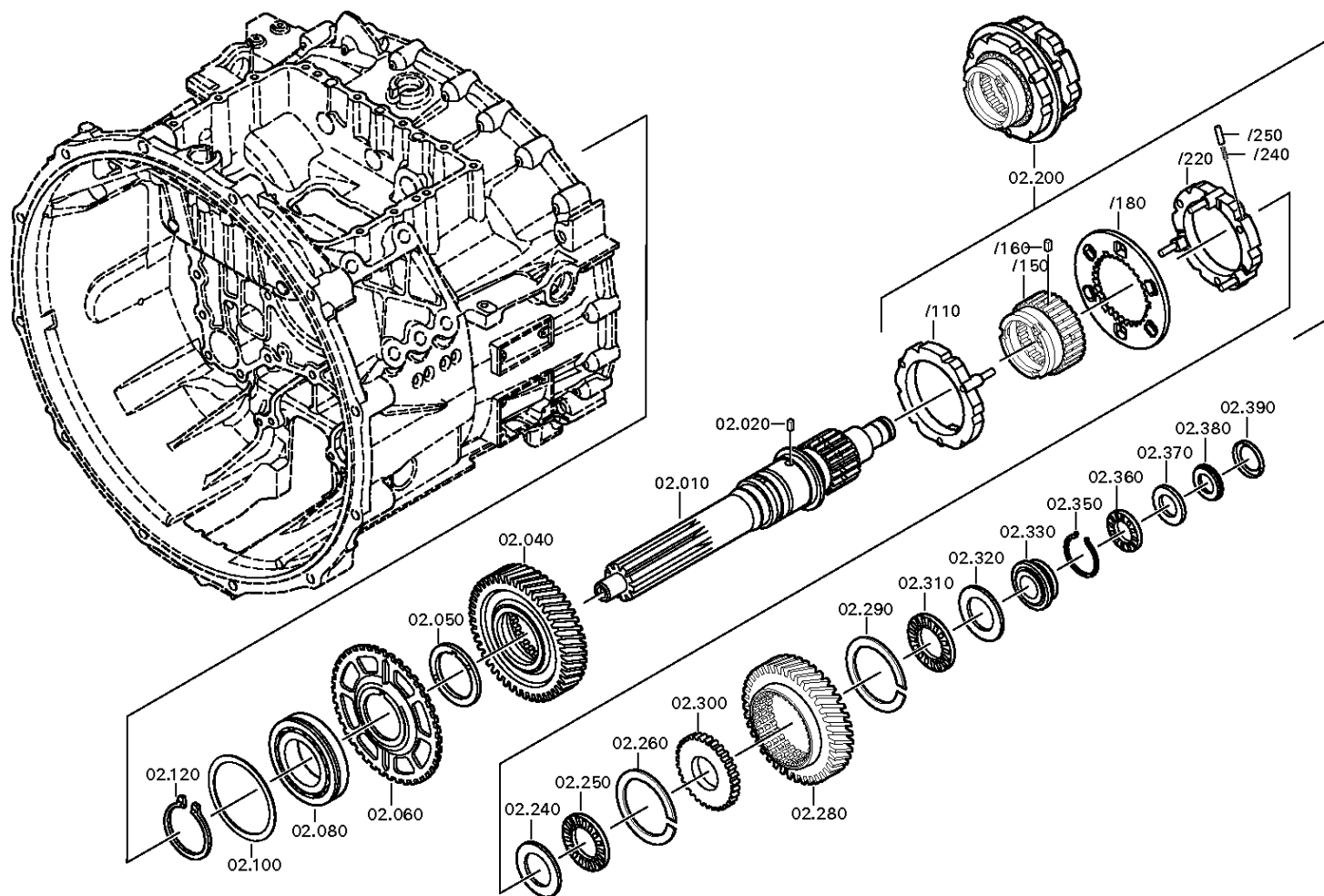










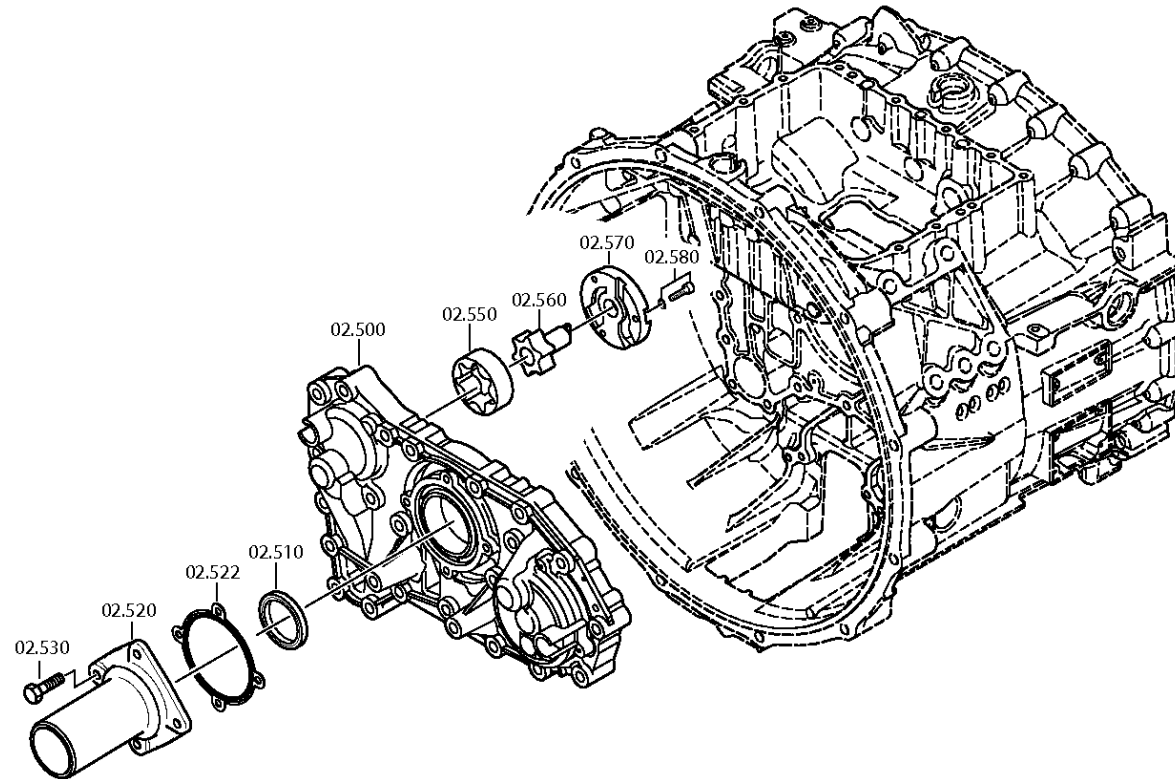


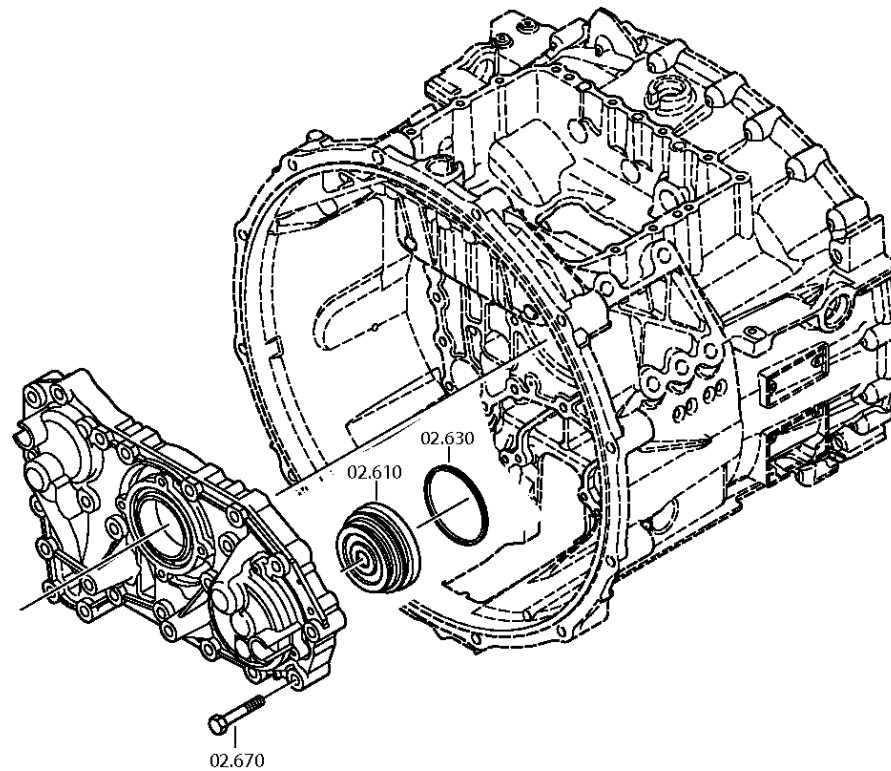
Plant

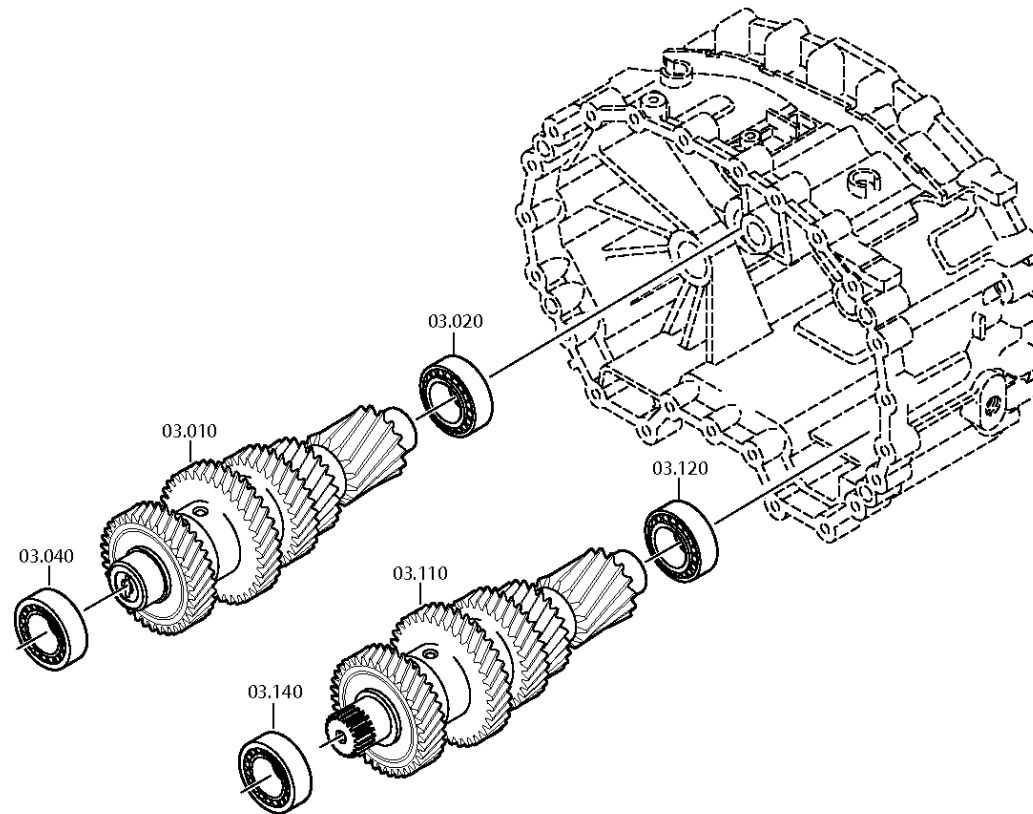
Page 2 from 3

Material number: 1328.003.004
Plate: 105.02.40-1
INPUT SHAFT

16 AS 2231 TD /
INPUT SHAFT





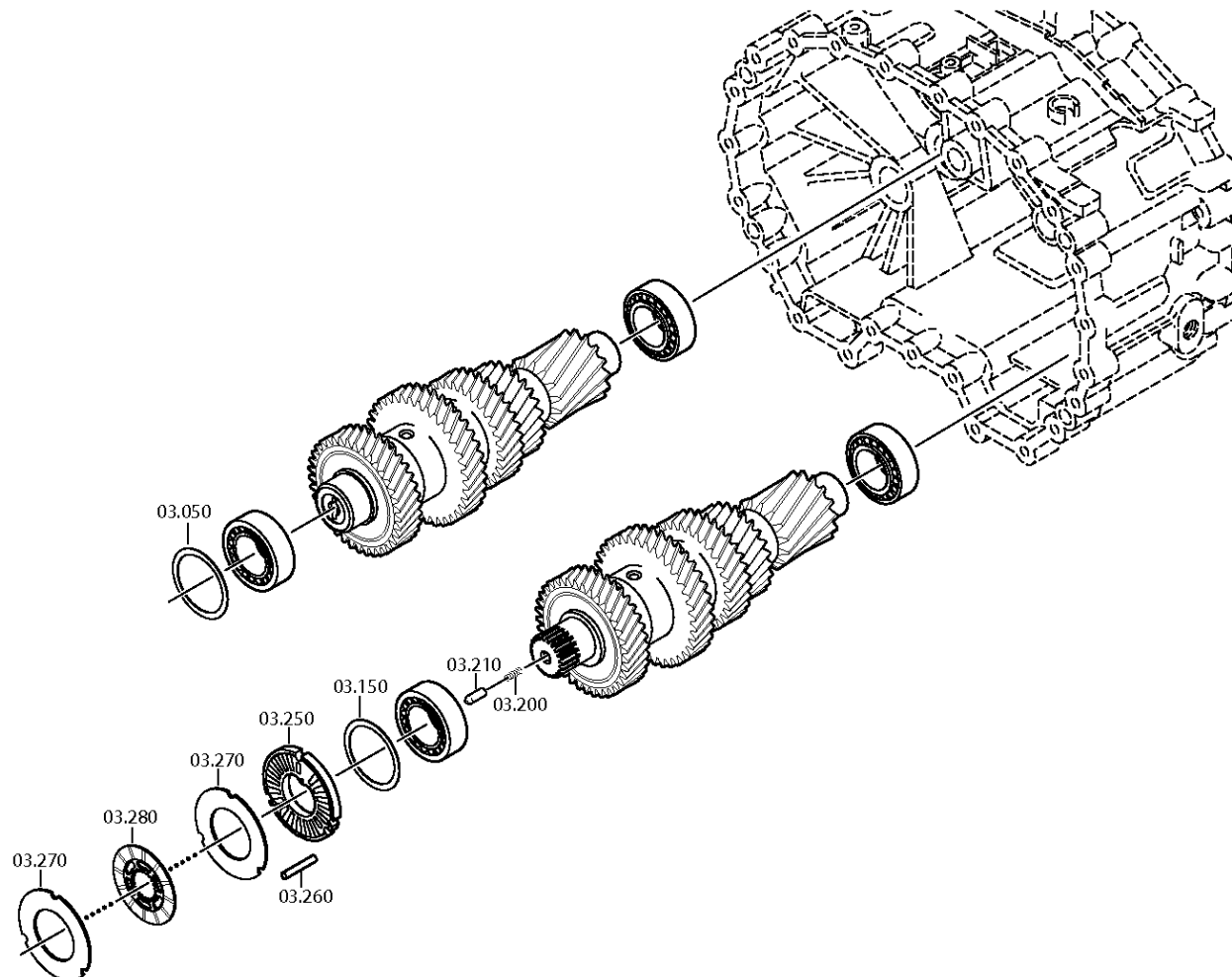


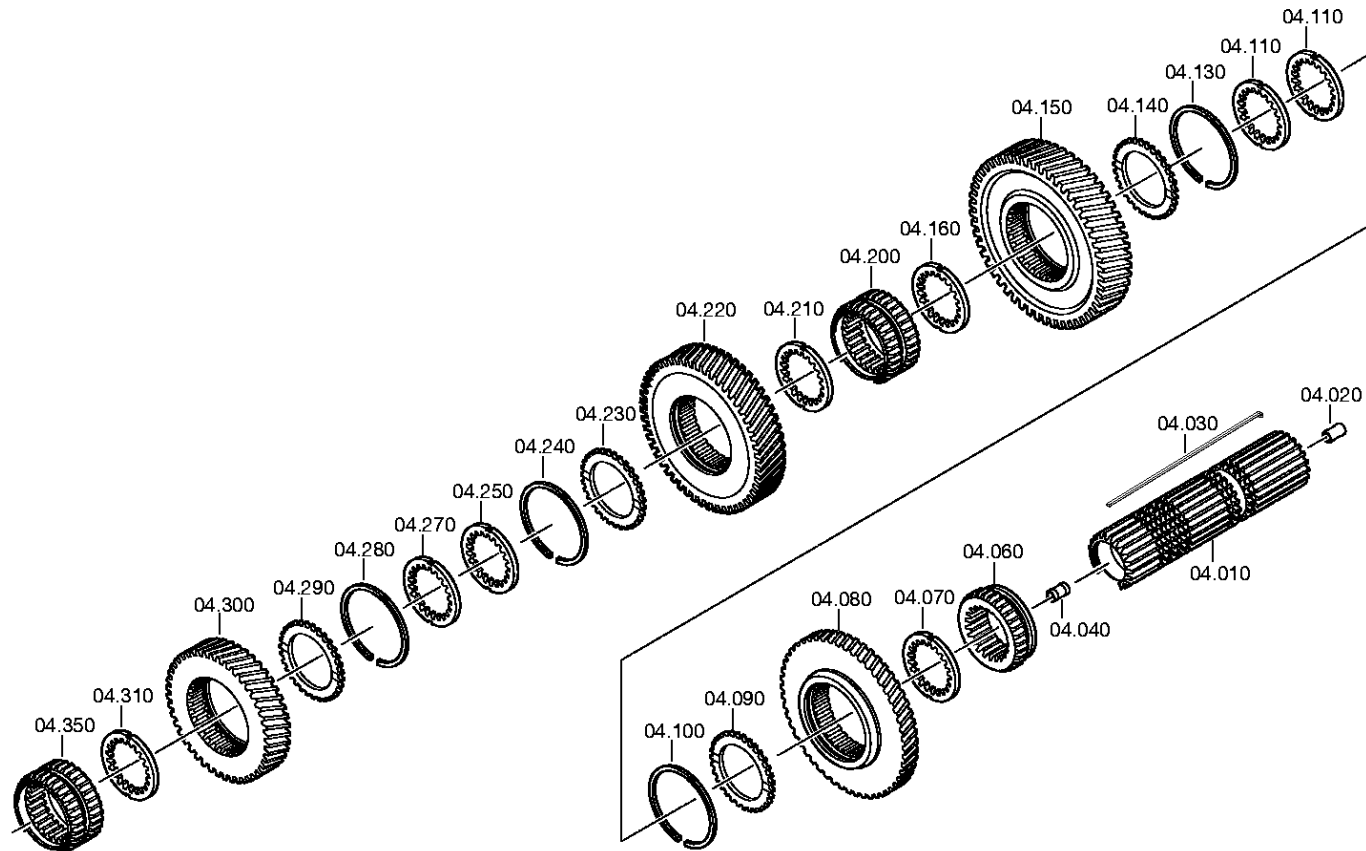
Plant

Page 2 from 2

Material number: 1328.003.004
Plate: 105.03.80-1
LAYSHAFT

16 AS 2231 TD /
LAYSHAFT





Plant

Page 1 from 1

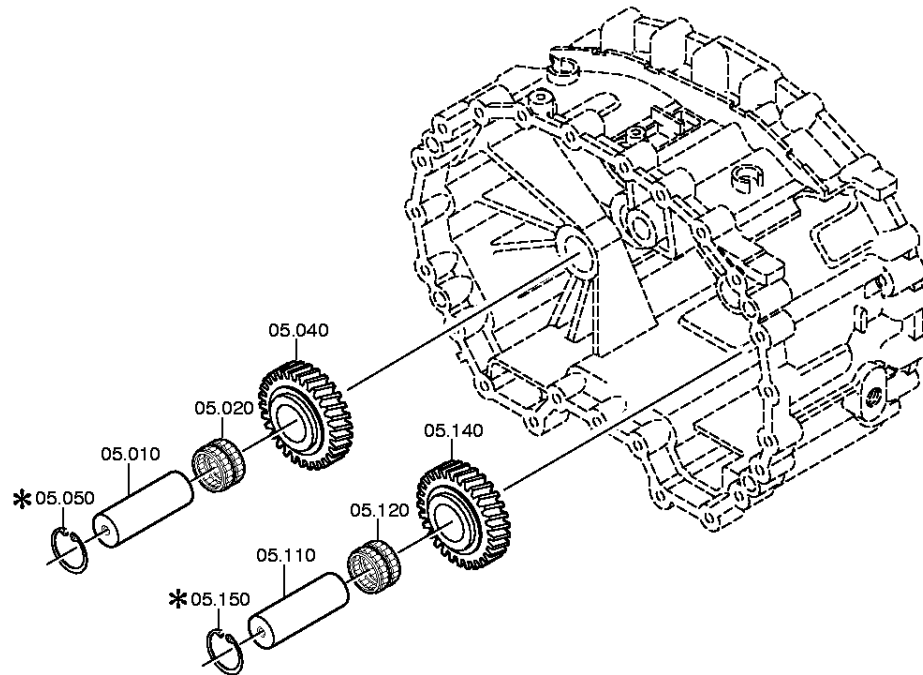
Material number: 1328.003.004

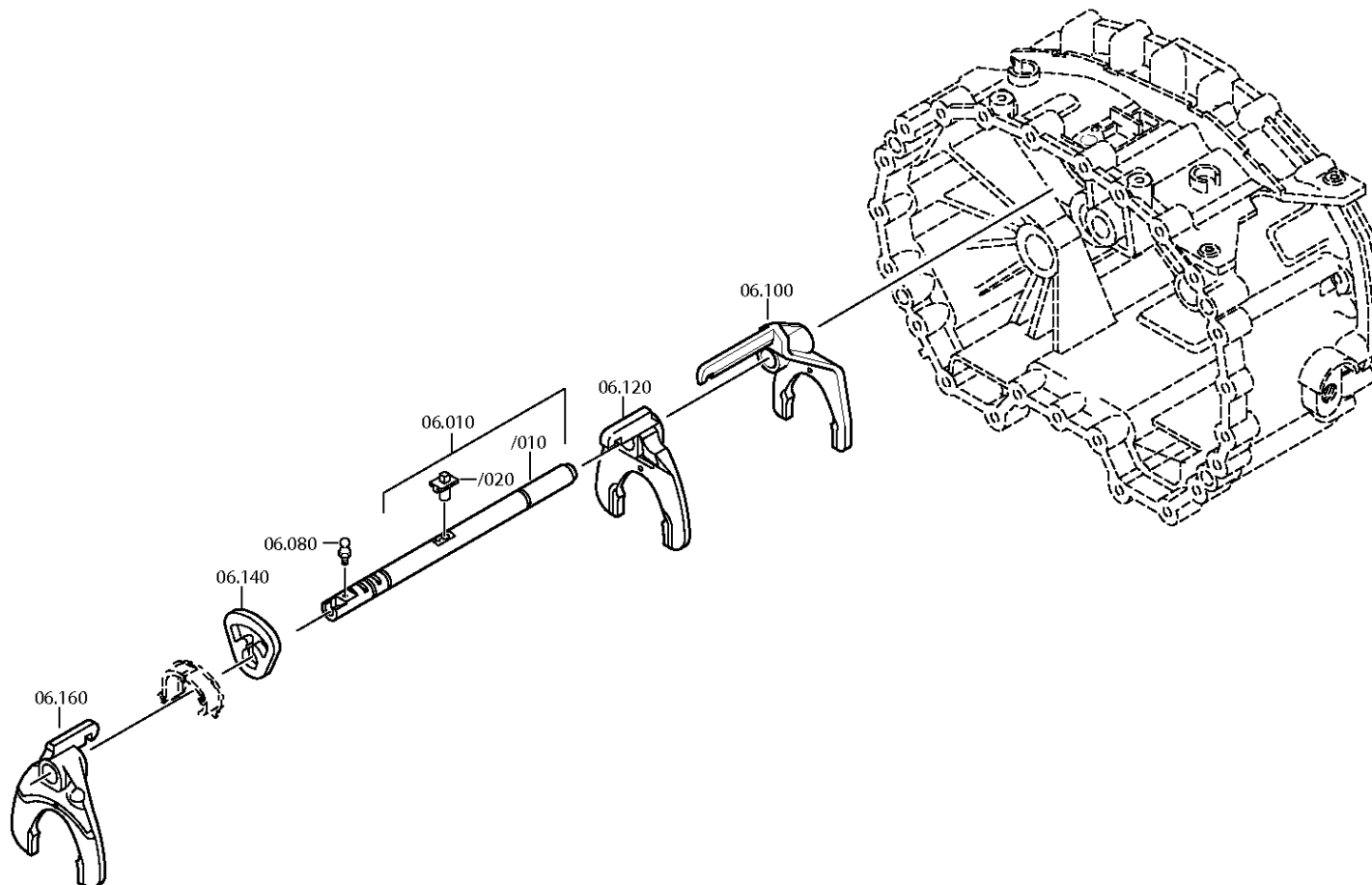
Plate: 105.05.01-1

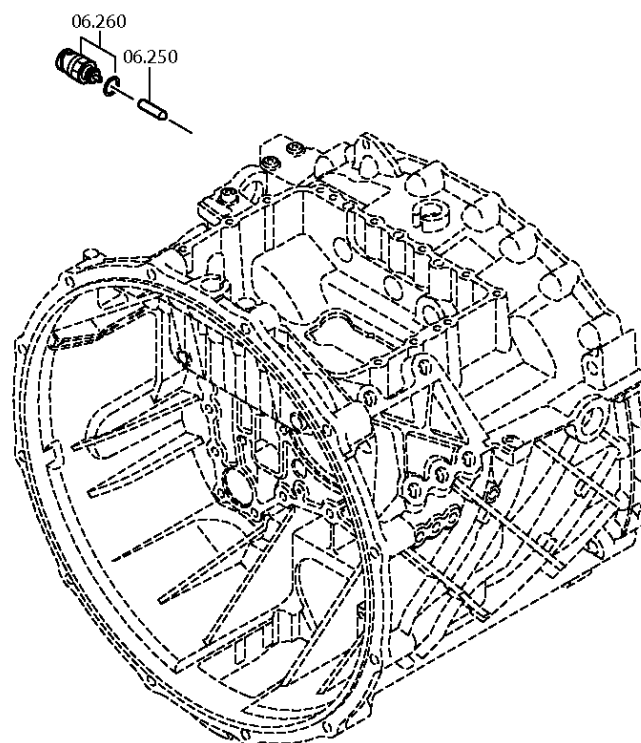
Material-assembly-group-no: 1328.105.005

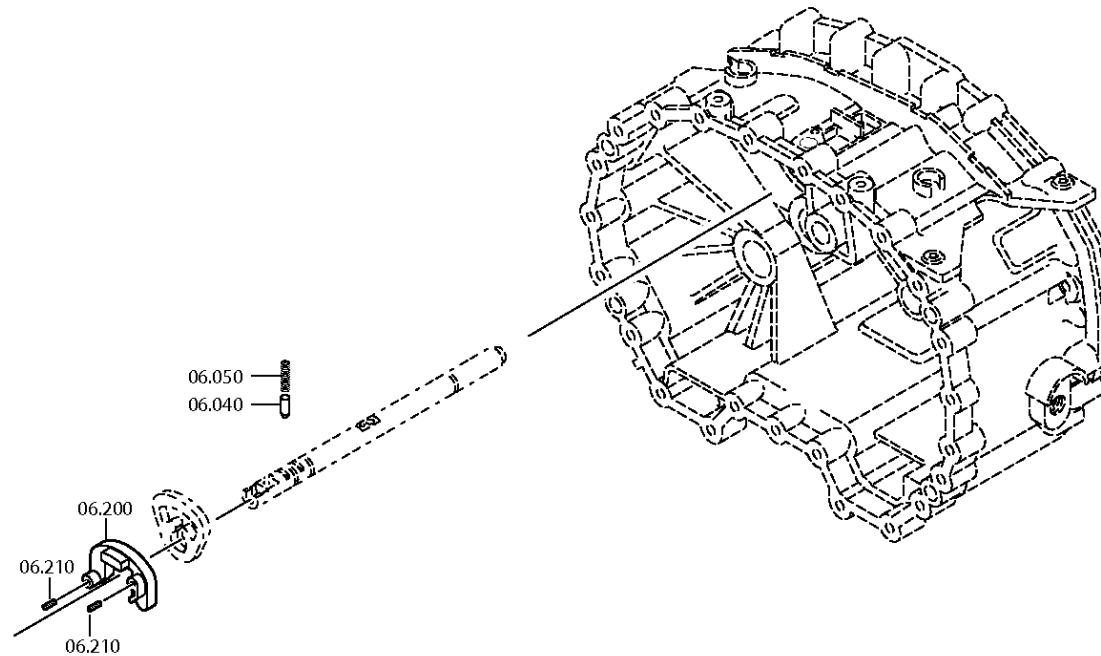
16 AS 2231 TD /

RETURN









Plant

Page 1 from 1

Material number: 1328.003.004

Plate: 105.40.05-1

Material-assembly-group-no: 1328.112.004

16 AS 2231 TD /
GV-SHIFT SYSTEM

