



# Spare Parts Catalog

MT-L 3020

Material number: 4472.025.215

Current date: 20.06.2018

ZF Friedrichshafen AG  
Hauptverwaltung  
80038 Friedrichshafen  
Deutschland

Telefon: +49 7541 77-0

Telefax: +49 7541 77-908000

[www.zf.com](http://www.zf.com)

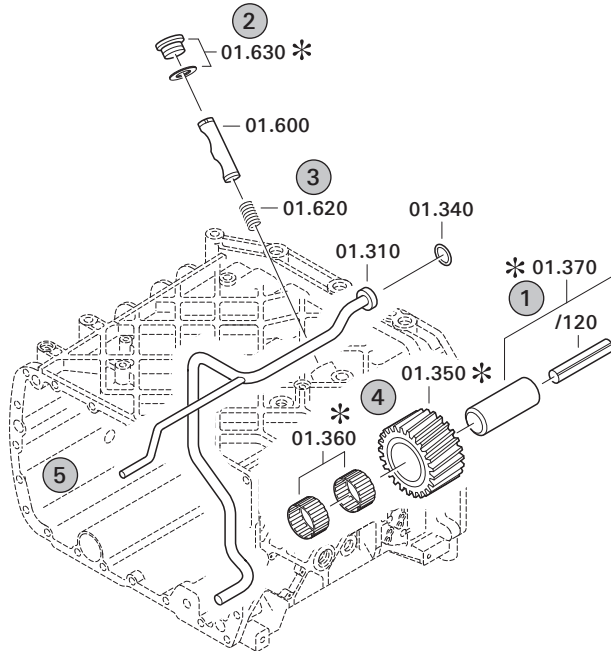
zuständiges Werk:  
Passau

# Notes relating to the spare parts catalog

## Setup of the spare parts catalog

- Cover sheet
- Technical Cover (only in SDM print)
- Overview of figures
- Figure
- Associated parts list
- Next figure
- Associated parts list
- ...

## Figure and parts list



## Overview of figures

Bildtafel Figure	Sachnummer Product number	Benennung (Description)	Technische Info Technical info	Description (Benennung)	Menge Quantity	Einheit Unit
068.08.17	1316.170.001	AUSLEGER	WL	SHIFT TURRET	1	Stk
068.08.06	1316.170.031	DECKEL	WL*H-H *VM	COVER	1	Stk
068.08.14	1316.170.808	DECKEL	WL*AUSL+GEH*H-H*HF160N	COVER	1	Stk
08	1316.170.441	ANSCHLUSSTEILE	WL*NG-VORB*RG-SCHL*168N *BAJONETT	CONNECTING PARTS	1	Stk

The "gap" indicates that there is no separate graphics panel (poster) for this assembly  
The parts of this assembly are shown with the same mid-section number on the figure

### 1 Positions and subpositions

Pos.	Sachnummer Product number	Benennung (Description)	Technische Info Technical info	Description (Benennung)	Menge Quantity	Einheit Unit
0370	1315.201.054	RUECKLAUFBOLZEN	KPL.16S151*SG*L= 79	REV.IDLER SHAFT	1	Stk
/0120	0631.329.293	SPANNSTIFT		SLOT. PIN	1	Stk

Positions marked with "/" are the individual items of a completion  
For example: Position 0370 contains a centering pin with the position /0120

### 2 Combinations with standardized parts

Pos.	Sachnummer Product number	Benennung (Description)	Technische Info Technical info	Description (Benennung)	Menge Quantity	Einheit Unit
0630		VERSCHL.SCHR.		SCREW PLUG	1	Stk
	0636.302.067	VERSCHL.SCHR.		SCREW PLUG	1	Stk
	0634.801.249	DICHTRING	A 26 X 31	SEALING RING	1	Stk

The parts list shows the components included in the combination of standardized parts

### 3 Depiction of position/item number on the figure and in the parts list

01.620 - on the figure      01 relates to the assembly in which the position is included. Due to program-related reasons, it is shown on the figure.

0620 - in the parts list

Pos.	Sachnummer Product number	Benennung (Description)	Technische Info Technical info	Description (Benennung)	Menge Quantity	Einheit Unit
0620	0732.040.736	DRUCKFEDER		COMPRESSION SPRING	1	Stk

### 4 \*-Positions

Positions marked with an \* are optional i.e. inclusion in the parts list is not mandatory.  
The following note is shown on the figure

je nach Stücklistenausführung  
depending on spec. number  
\*  
suivant la nomenclature  
secondo la distinta base

### 5 Parts, dotted display

Parts with dotted display on the figure are only used for orientation of other parts

# Technical Cover

Page 1 from 2

Material number: 4472.025.215



MT-L 3020 /

Pos.	Information	Amendment number
	KUNDE: SCHAEFFER	
	IDENT-NO.: WITHOUT	
	QUESTIONNAIRE:	
	PROJECT-NO.:	
	VEHICLE DATA:	
	TELESKOPLADER 870T	
	REIFEN: 400/60 26,5	
	R.DYN. 0,514M	
	RIM PITCH CIRCLE DIA: 275 MM	
	ENDGESCHWINDIGK.: 20,0 / 32,0 KM/H	
	PRODUCT DESCRIPTION:	
	ACHSANORDNUNG: STARRACHSE VORNE	
	UEBERSETZUNG GES:I= 17,34	
	PLANETENTRIEB: I= 6,00 P3-190-36	
	BEVELGEAR SET: I= 2,89 Z=26/9	
	BEFESTIGUNG: FEDERSPUR L= 770/900/1030/1160	
	FLANSCHMASS: L=1422	
	BRAKE:	
	TROMMELBREMSE HYDR. SERVO 203X60	
	BREMSBERECH.: 4472 716 292(0)	
	DIFF.CARRIER:	
	TYP/GROESSE: AE 250KVS	
	SENS OF ROTATION: CLOCKWISE	
	RING GEAR: SPIRAL DIRECTION RIGHT	
	POSITION OF RING GEAR: LEFT	
	FLANGE CONN: AD=120 * LZ= 8 * D=M10	
	DIFFERENTIAL:	
	TYPE: DZ= 250	
	BEVEL SIDE GEAR SPLINE: N 28X1,25	
	INTERLOCK VALUE: 45 PER CENT (%)	
	DRAWINGS:	
	SCHNITT: 4472 004 200()	
	EINBAU: 4472 625 014(0)	

# Technical Cover

Page 2 from 2

Material number: 4472.025.215



MT-L 3020 /

Pos.	Information	Amendment number
	TEST SPECIFICATION: 4472 760 014(0)	
	INSTALLATION INSTRUCTION: 4472 700 020	
	ASSEMBLY INSTRUCTION:	
	OIL CAPACITY:	
	ACHSBRUECKE: CA. 3,70L	
	PLAET.DRIVE/JE:CA.0,70 L	
	GESAMT: CA. 5,10L	
	OIL FILLING: YES	
	OIL SPECIFICATION: TE ML 05	
	BRAKE CONTROL: ATF-OIL/MOTOROIL 10 W	
	GESAMT-TROCKENMASSE: 222KG	
	COLOR: 6 ANTHRAZITGRAU RAL 7016	
	MISCELLANEOUS/REMARKS:	
	*	

# Plant

Page 1 from 1

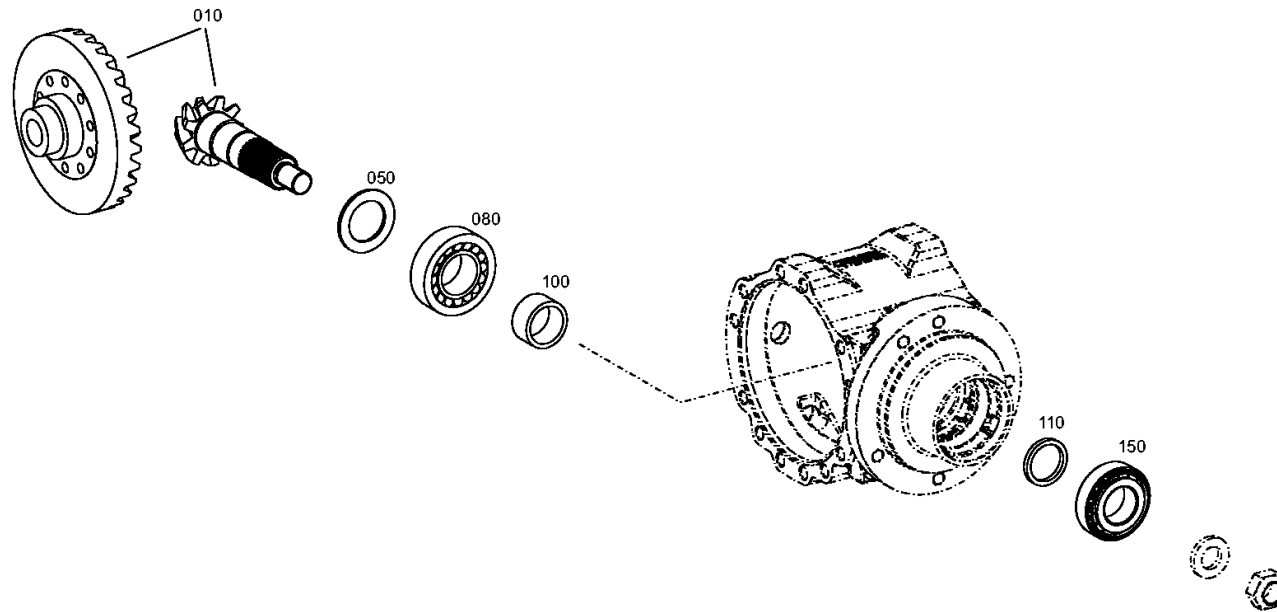
Material number: 4472.025.215

Plant: 447210221300

Material-assembly-group-no: 4472.102.213



MT-L 3020 /  
INPUT



# Plant

Page 1 from 1

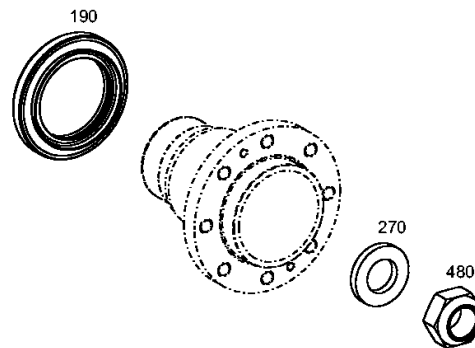
Material number: 4472.025.215

Plant: 447210252700

Material-assembly-group-no: 4472.102.527



MT-L 3020 /  
INPUT



# Plant

Page 1 from 1

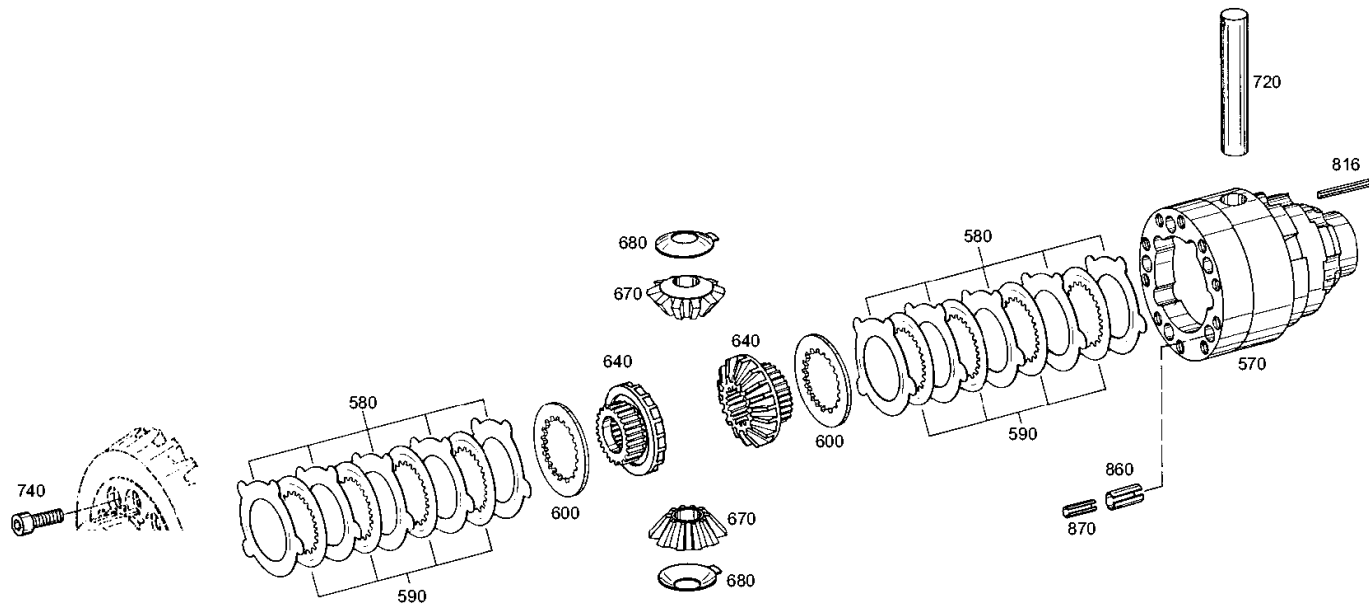
Material number: 4472.025.215

Plant: 448113304700

Material-assembly-group-no: 4481.133.047



MT-L 3020 /  
DIFFERENTIAL



# Plant

Page 1 from 1

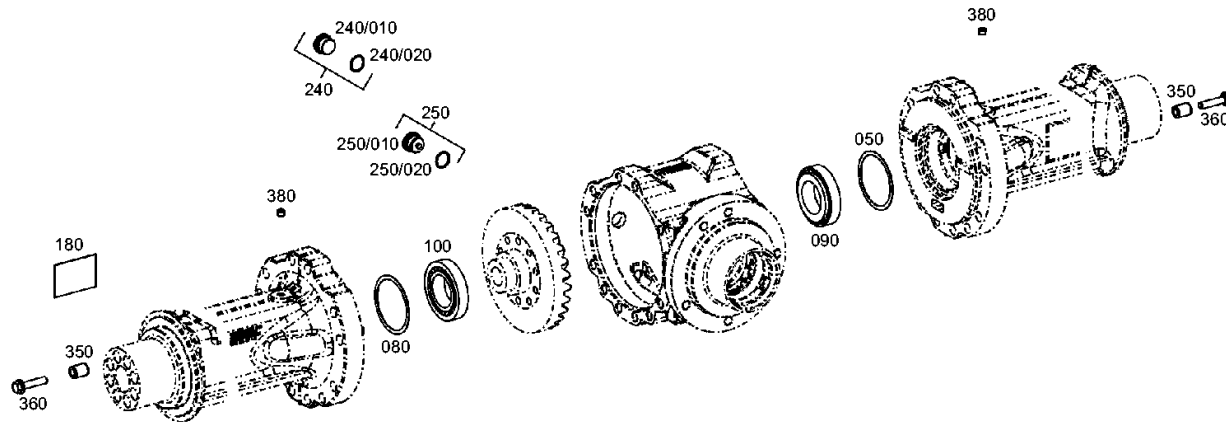
Material number: 4472.025.215

Plant: 447211711700

Material-assembly-group-no: 4472.117.117



MT-L 3020 /  
AXLE CASING





# Plant

Page 1 from 1

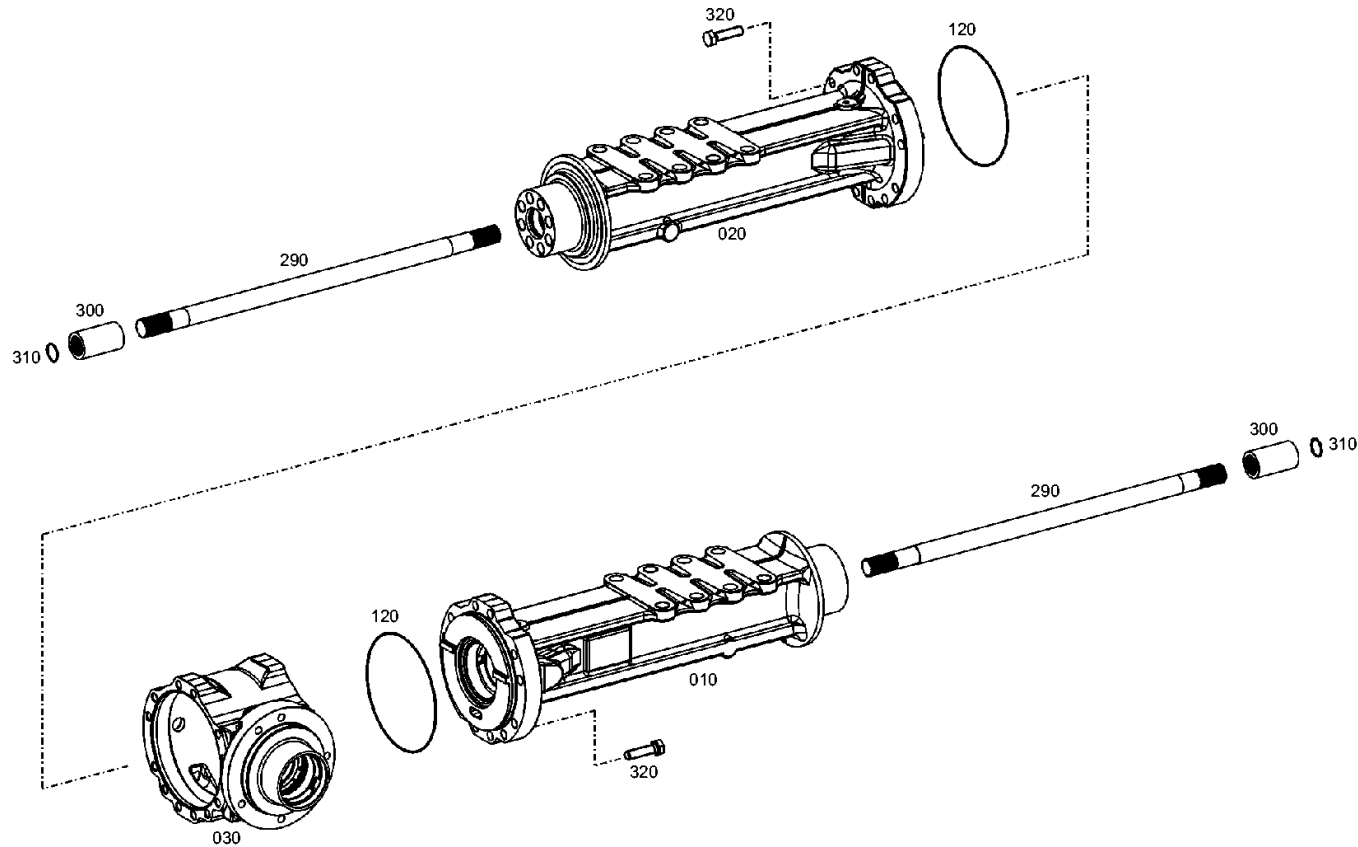
Material number: 4472.025.215

Plant: 447212746900

Material-assembly-group-no: 4472.127.469



MT-L 3020 /  
AXLE CASING



# Plant

Page 1 from 1

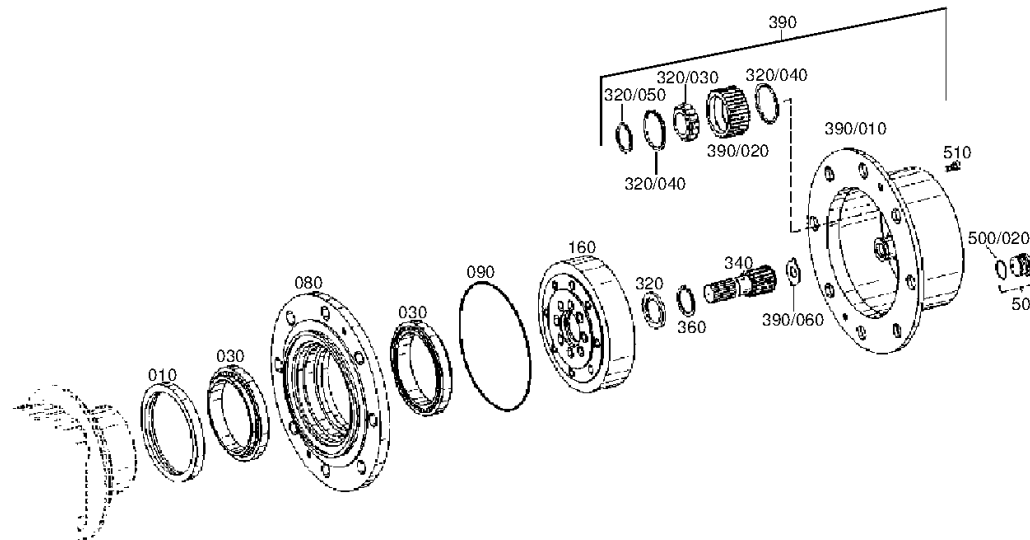
Material number: 4472.025.215

Plant: 447211910800

Material-assembly-group-no: 4472.119.108



MT-L 3020 /  
OUTPUT



# Plant

Page 1 from 1

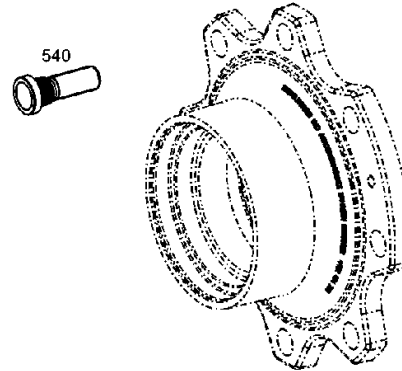
Material number: 4472.025.215

Plant: 447211959400

Material-assembly-group-no: 4472.119.594



MT-L 3020 /  
OUTPUT



# Plant

Page 1 from 1

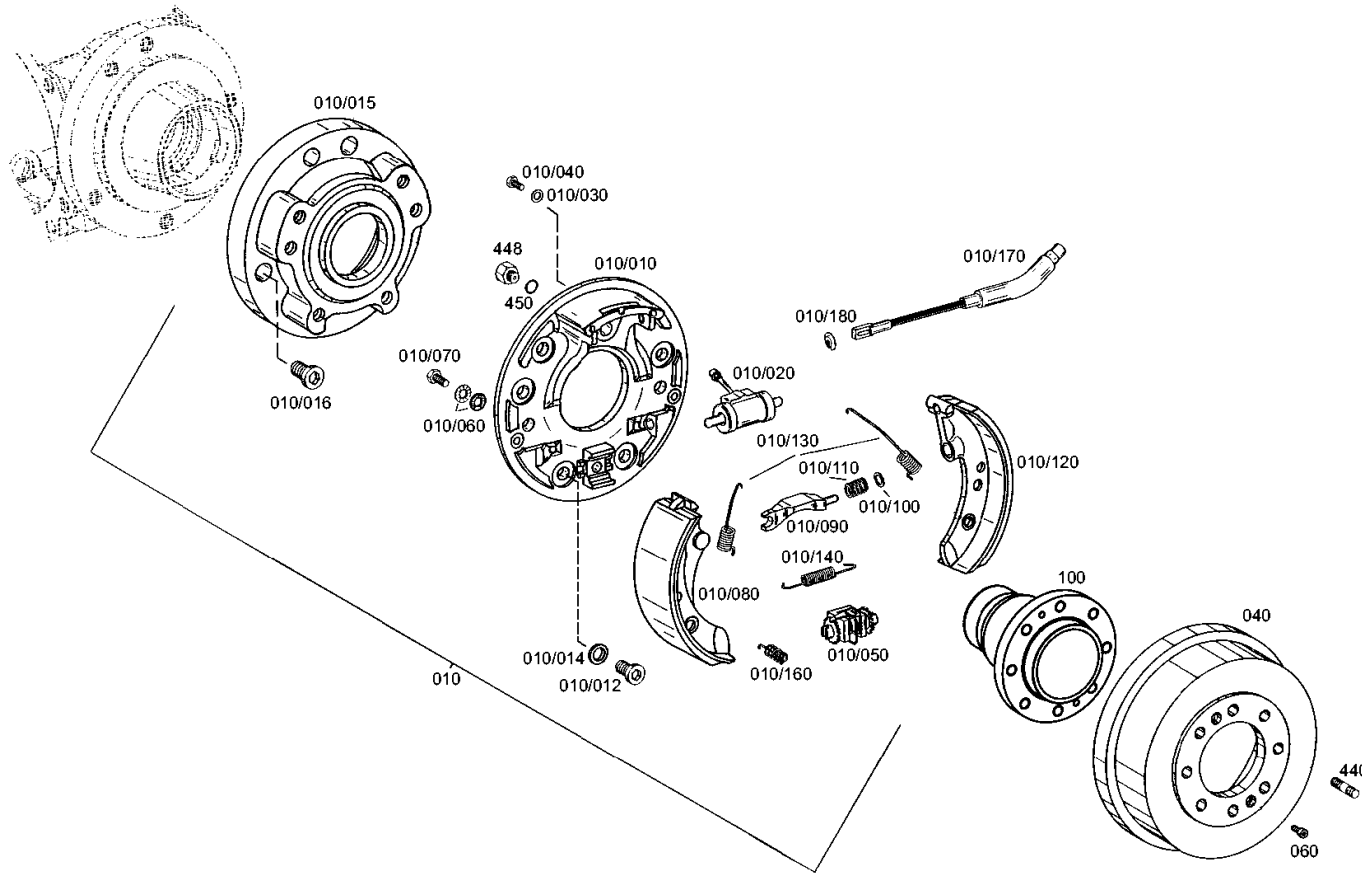
Material number: 4472.025.215

Plant: 446212298300

Material-assembly-group-no: 4462.122.983



MT-L 3020 /  
BRAKE



# Plant

Page 1 from 1

Material number: 4472.025.215

Plant: 414313900100

Material-assembly-group-no: 4143.139.001



MT-L 3020 /  
TYPE PLATE



010