



Spare Parts Catalog

AP-420 R

Material number: 4474.009.202

Current date: 15.01.2018

ZF Friedrichshafen AG
Hauptverwaltung
80038 Friedrichshafen
Deutschland

Telefon: +49 7541 77-0

Telefax: +49 7541 77-908000

www.zf.com

zuständiges Werk:
Passau

Notes relating to the spare parts catalog

Setup of the spare parts catalog

- Cover sheet
- Technical Cover (only in SDM print)
- Overview of figures
- Figure
- Associated parts list
- Next figure
- Associated parts list
- ...

Figure and parts list



Overview of figures

Bildtafel Figure	Sachnummer Product number	Benennung (Description)	Technische Info Technical info	Description (Benennung)	Menge Quantity	Einheit Unit
068.08.17	1316.170.001	AUSLEGER	WL	SHIFT TURRET	1	Stk
068.08.06	1316.170.031	DECKEL	WL*H-H *VM	COVER	1	Stk
068.08.14	1316.170.808	DECKEL	WL*AUSL+GEH*H-H*HF160N	COVER	1	Stk
08	1316.170.441	ANSCHLUSSTEILE	WL*NG-VORB*RG-SCHL*168N *BAJONETT	CONNECTING PARTS	1	Stk

The "gap" indicates that there is no separate graphics panel (poster) for this assembly
The parts of this assembly are shown with the same mid-section number on the figure

1 Positions and subpositions

Pos.	Sachnummer Product number	Benennung (Description)	Technische Info Technical info	Description (Benennung)	Menge Quantity	Einheit Unit
0370	1315.201.054	RUECKLAUFBOLZEN	KPL.16S151*SG*L= 79	REV.IDLER SHAFT	1	Stk
/0120	0631.329.293	SPANNSTIFT		SLOT. PIN	1	Stk

Positions marked with "/" are the individual items of a completion
For example: Position 0370 contains a centering pin with the position /0120

2 Combinations with standardized parts

Pos.	Sachnummer Product number	Benennung (Description)	Technische Info Technical info	Description (Benennung)	Menge Quantity	Einheit Unit
0630		VERSCHL.SCHR.		SCREW PLUG	1	Stk
	0636.302.067	VERSCHL.SCHR.		SCREW PLUG	1	Stk
	0634.801.249	DICHTRING	A 26 X 31	SEALING RING	1	Stk

The parts list shows the components included in the combination of standardized parts

3 Depiction of position/item number on the figure and in the parts list

01.620 - on the figure 01 relates to the assembly in which the position is included. Due to program-related reasons, it is shown on the figure.

0620 - in the parts list

Pos.	Sachnummer Product number	Benennung (Description)	Technische Info Technical info	Description (Benennung)	Menge Quantity	Einheit Unit
0620	0732.040.736	DRUCKFEDER		COMPRESSION SPRING	1	Stk

4 *-Positions

Positions marked with an * are optional i.e. inclusion in the parts list is not mandatory.
The following note is shown on the figure

je nach Stücklistenausführung
depending on spec. number
*
suivant la nomenclature
secondo la distinta base

5 Parts, dotted display

Parts with dotted display on the figure are only used for orientation of other parts

Technical Cover

Page 1 from 4

Material number: 4474.009.202



AP-420 R /

Pos.	Information	Amendment number
	CUSTOMER:HYUNDAI HEAVY INDUSTRIES CO LTD	
	CUSTOMER:	
	IDENT-NO.: WITHOUT	
	CUSTOMER-NUMBER: WITHOUT	
	TECHN.FRAGEBOGEN: VOM 16.05.94	
	QUESTIONNAIRE	
	WORK FLOW NR.20000501	
	PROJECT-NO.:	
	VEHICLE DATA:	
	VEHICLE DATA:	
	WHEEL LOADER HL780	
	WHEEL-LOADER	
	ENGINE: CUMMINS N14-C	
	ENGINE/MAKE/TYPER:	
	ENGINE POWER: P=250 KW IN N=2100 UPM	
	ENGINE POWER:	
	INPUT TORQUE: T=1627 NM IN N=1400 RPM	
	INPUT TORQUE:	
	TORQUE-CONVERTER: CLARK C86902	
	TORQUE CONVERTER:	
	TRANSMISSION: CLARK 6421	
	TRANSMISSION:	
	TRANSFER CASE:	
	TRANSFER CASE	
	TYRES: SINGLE	
	SET OF TIRES: SINGLE	
	REIFEN: 29,5-25 22PRL5/29,5-R25XHA/26,5-25/32PR L-3	
	TIRES:	
	RIM PITCH CIRCLE DIA: 500 MM	
	RIM PITCH CIRCLE DIA	
	ENDGESCHWINDIGK.: 31,0 KM/H	
	MAX.SPEED:	
	PRODUCT DESCRIPTION:	

Technical Cover

Page 2 from 4

Material number: 4474.009.202



AP-420 R /

Pos.	Information	Amendment number
	DESCRIPTION:	
	MOUNTING POSITION:FRONT AXLE	
	FITTING POSITION:FRONT AXLE	
	RATIO TOTAL: I=27,00	
	RATIO TOTAL	
	PLANETARY DRIVE:I=6,35 P4-390-86	
	PLANETARY DRIVE: I= 6,00 P4-360-50	
	BEVELGEAR SET: I= 4,25 T=34/8	
	BEVELGEAR SET	
	FIXING:SPRING DETENT L= 900/1140/1380	
	MOUNTING: CENTRAL	
	FLANGE DISTANCE: L=2832	
	FLANGE DISTANCE	
	WHEEL TRACK: L=2420	
	WHEEL TRACK:	
	SPUR GEAR DRIVE: WITHOUT	
	SPUR GEAR DRIVE: WITHOUT	
	BRAKE:	
	BRAKE:	
	MULTILPE-DISC BRAKE: 340X230	
	MULTILPE-DISC BRAKE/HYDR.	
	PARKING BRAKE: WITH	
	PARKING BRAKE:	
	LINED DISC: 4 PIECES	
	LINING	
	LEVERAGE: WITHOUT	
	SLACK ADJUSTER	
	BRAKE CALCULATION	
	BRAKE CALCULATION	
	DIFF.CARRIER:	
	DIFF.CARRIER	
	TYPE: R	
	BEVEL SIDE GEAR SPLINE: N 38X1,25	



Pos.	Information	Amendment number
	SENS OF ROTATION:CLOCKWISE	
	SENS OF ROTATION:CLOCKWISE	
	RING GEAR: SPIRAL DIRECTION RIGHT	
	RING GEAR: SPIRAL DIRECTION RIGHT	
	POSITION OF RING GEAR: LEFT	
	POSITION OF RING GEAR/LEFT	
	FL.LAGE HYPOID: RECHTS OBEN	
	FLANGE POSITION: HYPOID DRIVE	
	FLANSCH: MECH. 9C	
	FLANGE CONN:	
	DIFFERENTIAL:	
	LIMITED-SLIP DIFFERENTIAL	
	LIM.SLIP.DIFF:	
	TYP/GROESSE: DL 4000	
	BEVEL SIDE GEAR SPLINE: N 38X1,25	
	BEVEL SIDE GEAR SPLINE: N 60X1,25	
	BEVEL SIDE GEAR SPLINE:	
	INTERLOCK VALUE: 45 PER CENT (%)	
	BLOCKAGE EFFECT	
	DRAWINGS:	
	DRAWINGS:	
	SECTIONAL: 4474 009 193 (0)	
	SECT.DRAWING:	
	EINBAU: 4474 609 067 (0)	
	INST.DRAWING:	
	TEST SPECIFICATION: 4474 760 003(3)	
	TEST SPECIFICATION: 4474 760 003(2)	
	ASSEMBLY INSTRUCTION:	
	MOUNTING HINTS:	
	PISTON STROKE 3,2-3,6 MM	
	PISTON STORKE	
	SETTING INSTRUCTION PISTON STROKE 4474 700 002	
	RADBOLZENGWINDE IST VOR FARBE ZU SCHUETZEN. *	

Technical Cover

Page 4 from 4

Material number: 4474.009.202



AP-420 R /

Pos.	Information	Amendment number
	SCHUTZHUELSE 210 VERWENDEN.	
	OIL CAPACITY:	
	OIL CAPACITY:	
	AXLE: APPROX:.....L	
	AXLE:	
	PLANETARY DRIVE/JE:CA.....L	
	PLANETARY DRIVE: I= 6,00 P4-360-50	
	TOTAL APPROX.L	
	TOTAL: CA.29,00L	
	OIL FILLING: NO	
	OIL FILLING: NO	
	OIL SPECIFICATION ML 05 C/D	
	OIL SPECIFICATION	
	BRAKE CONTROL: ATF-OIL/MOTOROIL 10 W	
	BRAKE CONTROL WITH OIL	
	WEIGHT-TOTAL: ...KG	
	WEIGHT TOTAL	
	COLOR: 2 YELLOW RAL 1006	
	COLOR:	
	PACKING:	
	PACKING:	
	MISCELLANEOUS/REMARKS:	
	MISCELLANEOUS/REMARKS	
	PREPRODUCTION UNITS: AP-420/R TO PL 4474 009 094	

Plant

Page 1 from 1

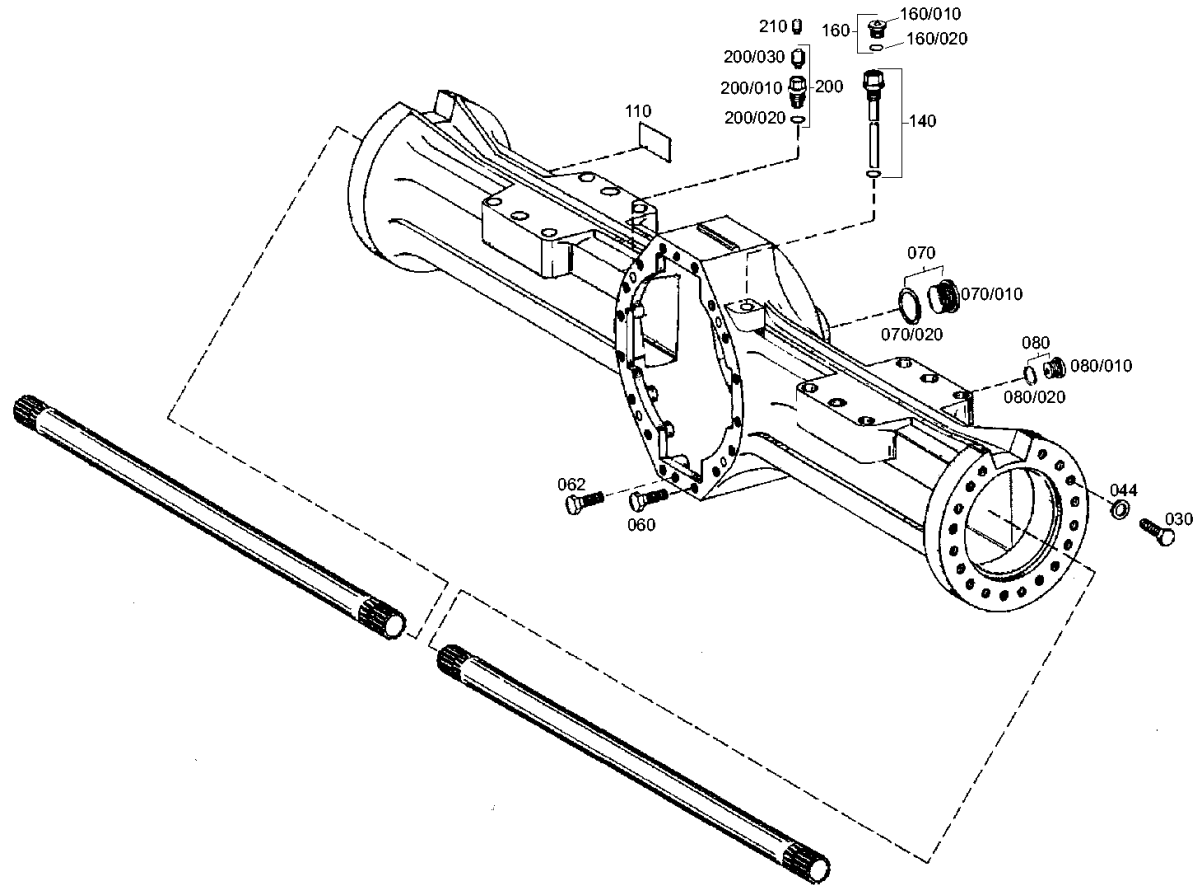
Material number: 4474.009.202

Plant: 447410116000

Material-assembly-group-no: 4474.101.160



AP-420 R /
AXLE CASING



Plant

Page 1 from 1

Material number: 4474.009.202

Plant: 447410110100

Material-assembly-group-no: 4474.101.576



AP-420 R /
AXLE CASING

There is presently no plate available for this parts list/ assembly.

Plant

Page 1 from 1

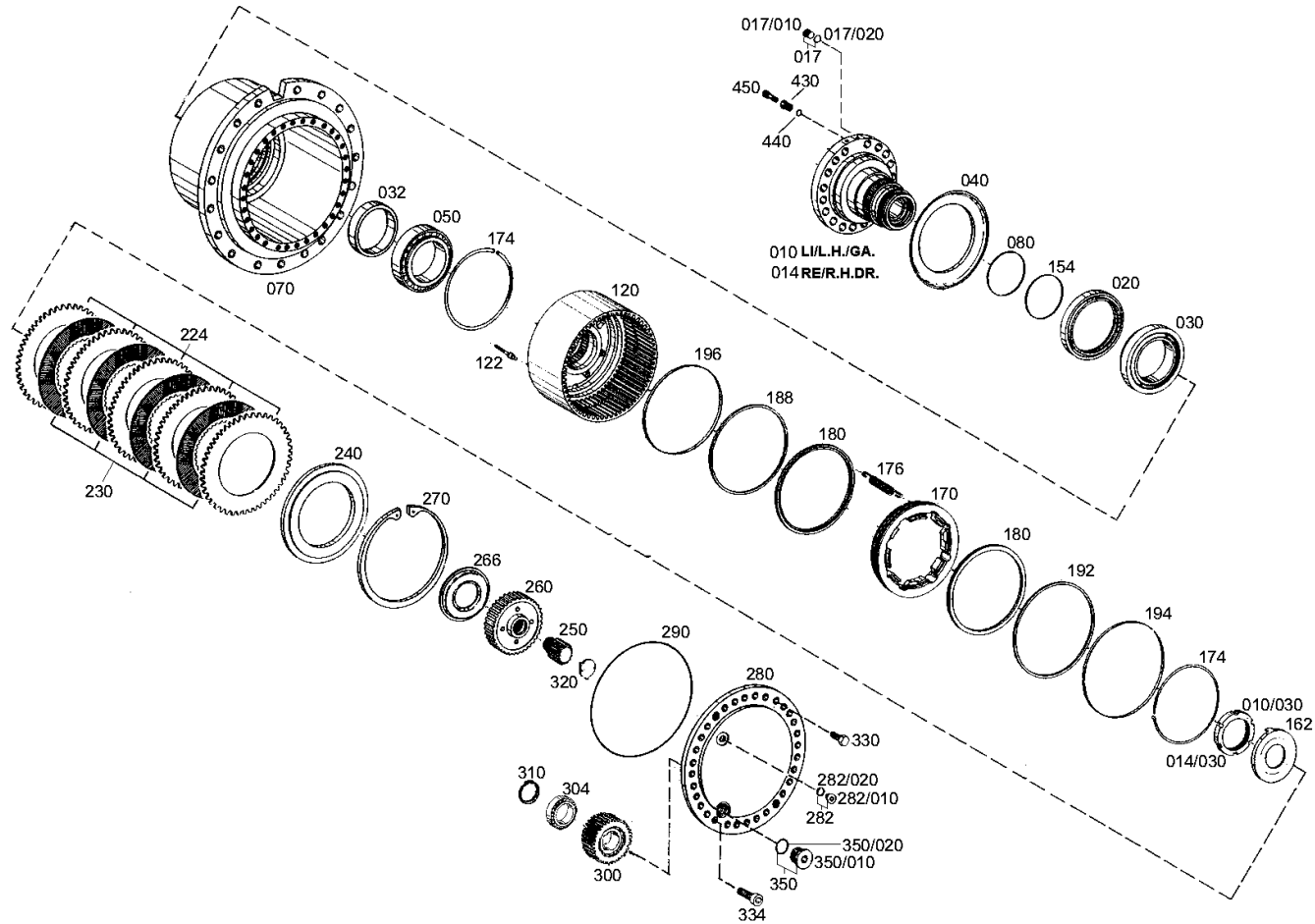
Material number: 4474.009.202

Plant: 447410225500

Material-assembly-group-no: 4474.102.255



AP-420 R /
OUTPUT



Plant

Page 1 from 1

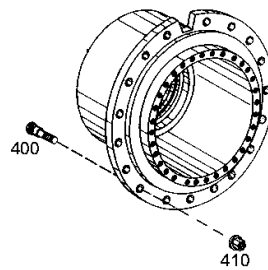
Material number: 4474.009.202

Plant: 447410246800

Material-assembly-group-no: 4474.102.468



AP-420 R /
OUTPUT



Plant

Page 1 from 2

Material number: 4474.009.202

Plant: 446212110001

Material-assembly-group-no: 4462.121.070



AP-420 R /
PARKING BRAKE

There is presently no plate available for this parts list/ assembly.

Plant

Page 2 from 2

Material number: 4474.009.202

Plant: 446212110002

Material-assembly-group-no: 4462.121.070



AP-420 R /
PARKING BRAKE

There is presently no plate available for this parts list/ assembly.

Technical Cover

Page 1 from 1

Material number: 4460.031.262



AXLE INSERT /

Pos.	Information	Amendment number
	PRODUCT DESCRIPTION:	
	BEVELGEAR SET: I= 4,25 T=34/8	
	TYPE: R	
	SENS OF ROTATION:CLOCKWISE	
	RING GEAR: SPIRAL DIRECTION RIGHT	
	POSITION OF RING GEAR: LEFT	
	FLANSCH-LAGE: RECHTS OBEN	
	FLANSCH MECH. 9C	
	LIMITED-SLIP DIFFERENTIAL	
	TYPE: DL-4000	
	RATIO SPREAD: I=5,00 OR SMALLER	
	BEVEL SIDE GEAR SPLINE: N 60X1,25	
	INTERLOCK VALUE: 45 PER CENT (%)	
	DRAWINGS:	
	OIL SPECIFICATION: TE ML 05	
	WEIGHT-TOTAL: ...KG	
	MISCELLANEOUS/REMARKS:	

Plant

Page 1 from 1

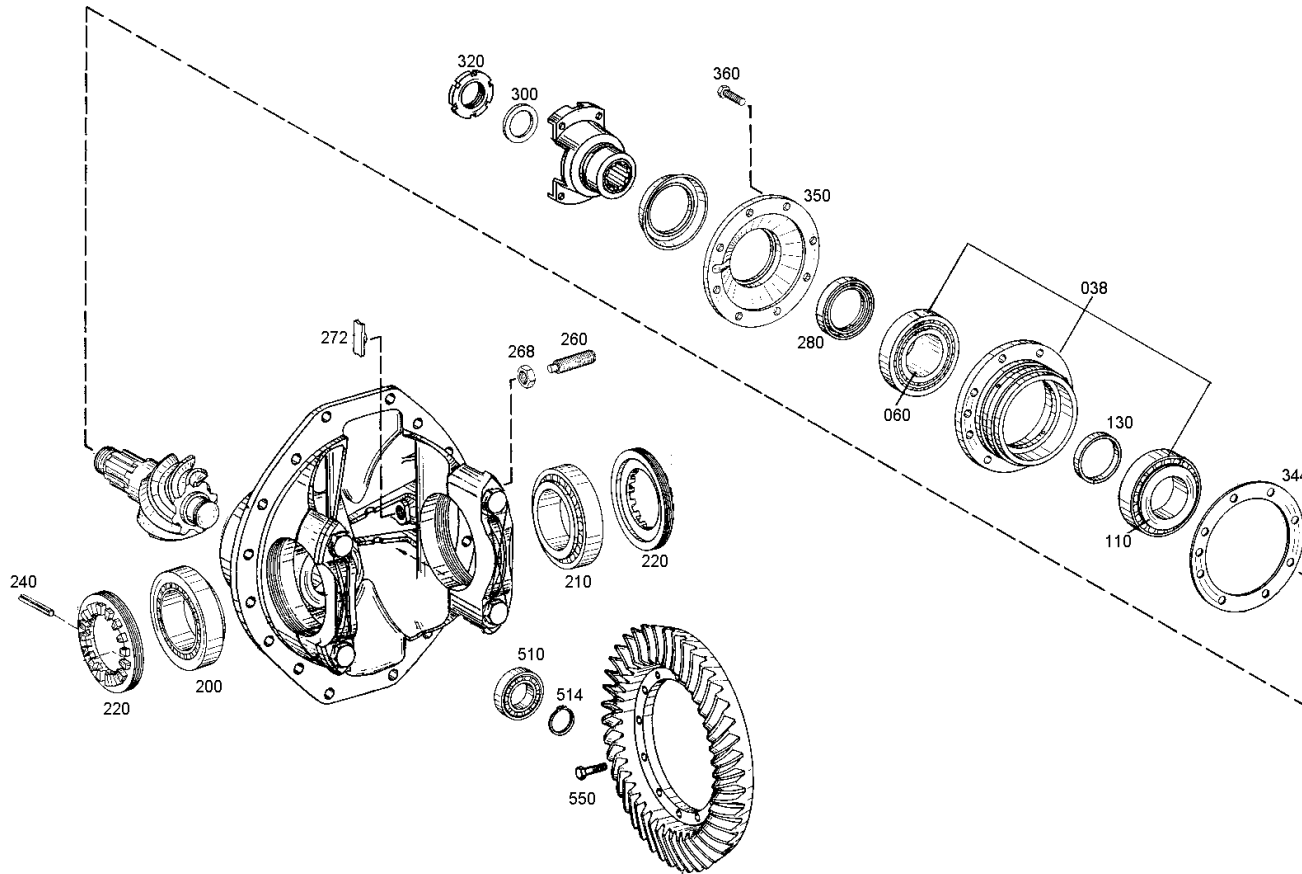
Material number: 4460.031.262

Plant: 446013110000

Material-assembly-group-no: 4460.131.070



AP-420 R /
HOUSING



Plant

Page 1 from 1

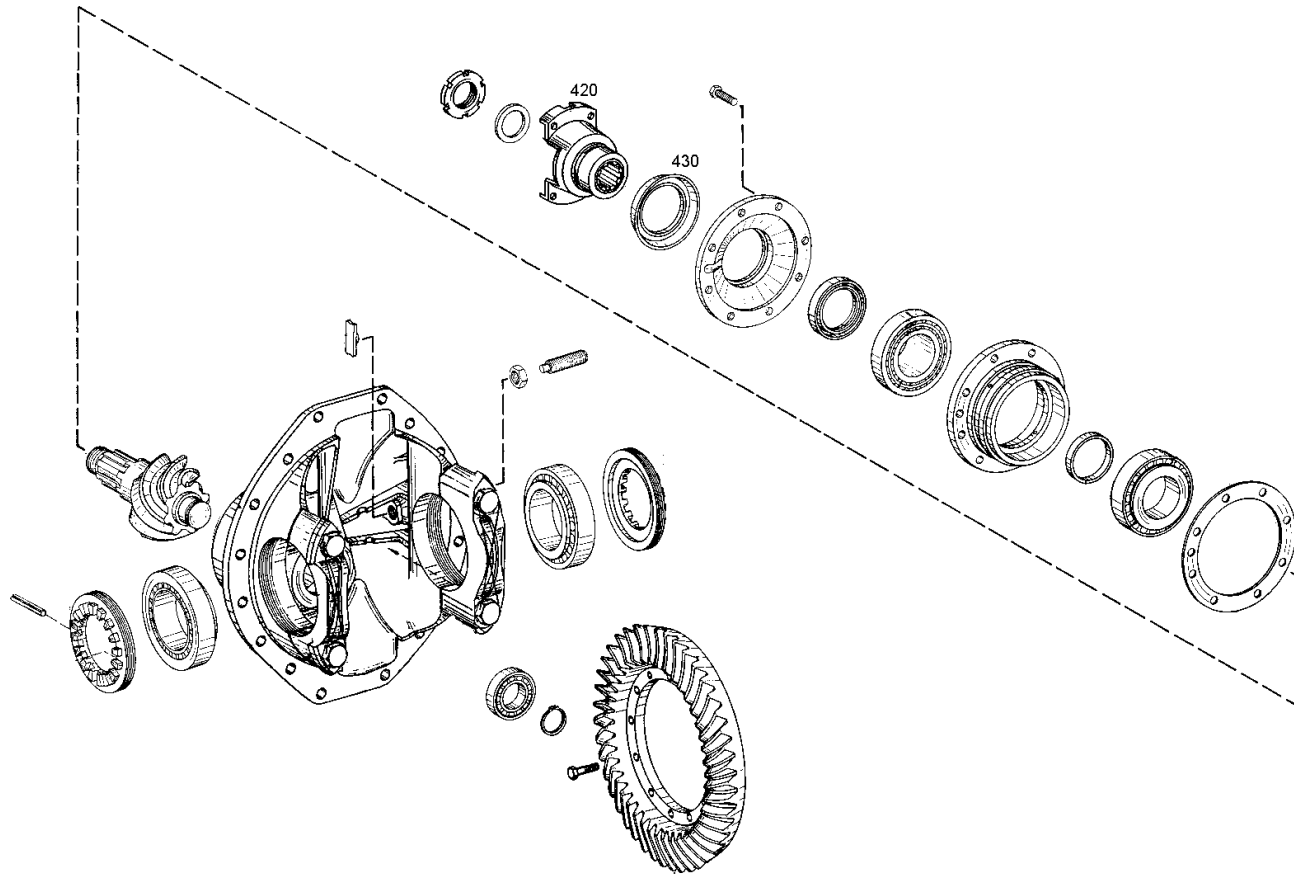
Material number: 4460.031.262

Plant: 446013110100

Material-assembly-group-no: 4460.131.626



AP-420 R /
INPUT FLANGE



Plant

Page 1 from 1

Material number: 4460.031.262

Plant: 446023134400

Material-assembly-group-no: 4460.231.344



AP-420 R /
BEVEL GEAR SET

