



Spare Parts Catalog

MT-L 3085

Material number: 4474.052.106

Current date: 31.07.2020

ZF Friedrichshafen AG
Hauptverwaltung
80038 Friedrichshafen
Deutschland

Telefon: +49 7541 77-0

Telefax: +49 7541 77-908000

www.zf.com

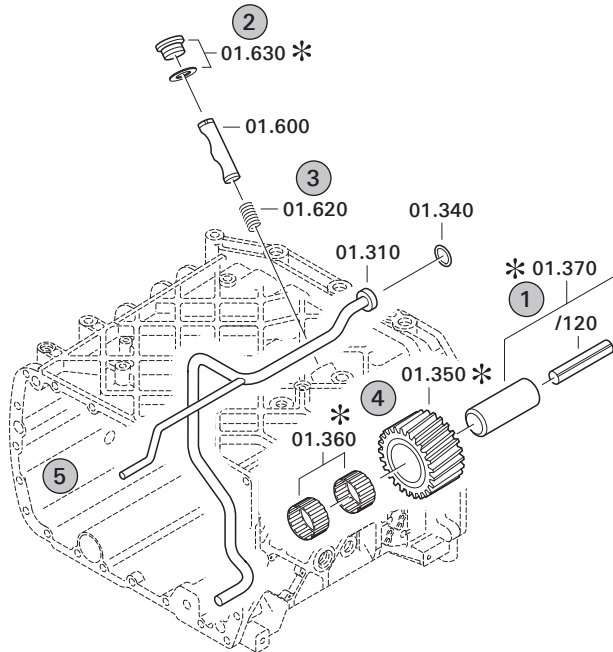
zuständiges Werk:
Passau

Notes relating to the spare parts catalog

Setup of the spare parts catalog

- Cover sheet
- Technical Cover (only in SDM print)
- Overview of figures
- Figure
- Associated parts list
- Next figure
- Associated parts list
- ...

Figure and parts list



Overview of figures

Bildtafel Figure	Sachnummer Product number	Benennung (Description)	Technische Info Technical info	Description (Benennung)	Menge Quantity	Einheit Unit
068.08.17	1316.170.001	AUSLEGER	WL	SHIFT TURRET	1	Stk
068.08.06	1316.170.031	DECKEL	WL*H-H *VM	COVER	1	Stk
068.08.14	1316.170.808	DECKEL	WL*AUSL+GEH*H-H*HF160N	COVER	1	Stk
08	1316.170.441	ANSCHLUSSTEILE	WL*NG-VORB*RG-SCHL*168N *BAJONETT	CONNECTING PARTS	1	Stk

The "gap" indicates that there is no separate graphics panel (poster) for this assembly
The parts of this assembly are shown with the same mid-section number on the figure

1 Positions and subpositions

Pos.	Sachnummer Product number	Benennung (Description)	Technische Info Technical info	Description (Benennung)	Menge Quantity	Einheit Unit
0370	1315.201.054	RUECKLAUFBOLZEN	KPL.16S151*SG*L= 79	REV.IDLER SHAFT	1	Stk
/0120	0631.329.293	SPANNSTIFT		SLOT. PIN	1	Stk

Positions marked with "/" are the individual items of a completion
For example: Position 0370 contains a centering pin with the position /0120

2 Combinations with standardized parts

Pos.	Sachnummer Product number	Benennung (Description)	Technische Info Technical info	Description (Benennung)	Menge Quantity	Einheit Unit
0630		VERSCHL.SCHR.		SCREW PLUG	1	Stk
	0636.302.067	VERSCHL.SCHR.		SCREW PLUG	1	Stk
	0634.801.249	DICHTRING	A 26 X 31	SEALING RING	1	Stk

The parts list shows the components included in the combination of standardized parts

3 Depiction of position/item number on the figure and in the parts list

01.620 - on the figure 01 relates to the assembly in which the position is included. Due to program-related reasons, it is shown on the figure.

0620 - in the parts list

Pos.	Sachnummer Product number	Benennung (Description)	Technische Info Technical info	Description (Benennung)	Menge Quantity	Einheit Unit
0620	0732.040.736	DRUCKFEDER		COMPRESSION SPRING	1	Stk

4 *-Positions

Positions marked with an * are optional i.e. inclusion in the parts list is not mandatory.
The following note is shown on the figure

je nach Stücklistenausführung
depending on spec. number
*
suivant la nomenclature
secondo la distinta base

5 Parts, dotted display

Parts with dotted display on the figure are only used for orientation of other parts

Technical Cover

Page 1 from 4

Material number: 4474.052.106



MT-L 3085 /

Pos.	Information	Amendment number
	CUSTOMER: LIEBHERR BISCHOFSHOFEN	
	IDENT-NR:	
	CUSTOMER-NUMBER:	
	QUESTIONNAIRE:	
	QUESTIONNAIRE	
	ORDER NO:	
	PROJEKT-NR.:33144	
	VEHICLE DATA:	
	VEHICLE DATA:	
	ART/TYP: L 544	
	VEHICLE TYPE:	
	MOTOR/FIRMA/TYP: LIEBHERR D 906 TB	
	ENGINE/MAKE/TYP:	
	ENGINE POWER: P=121KW IN N=2000 UPM	
	ENGINE POWER:	
	INPUT TORQUE: T=690 NM IN 1200 UPM	
	GETRIEBE: ZF 3AVG	
	TRANSMISSION:	
	TYRES: SINGLE	
	SET OF TIRES: SINGLE	
	TYRES: 23.5-25	
	TIRES:	
	RIM PITCH CIRCLE DIA: 425 MM	
	RIM PITCH CIRCLE DIA	
	MAX.SPEED: 40 KM/H	
	MAX.SPEED:	
	PRODUCT DESCRIPTION:	
	DESCRIPTION:	
	MOUNTING POSITION:FRONT AXLE	
	FITTING POSITION:FRONT AXLE	
	RATIO TOTAL: I=23,34	
	RATIO TOTAL	
	PLANETARY DRIVE: I=6,00 P4-360-50	

Technical Cover

Page 2 from 4

Material number: 4474.052.106



MT-L 3085 /

Pos.	Information	Amendment number
	PLANETARY DRIVE: I= 6,00 P4-360-50	
	BEVELGEAR SET: I= 3,89 T=35/9	
	BEVELGEAR SET	
	BEFESTIGUNG: FEDERSPUR L= 870/1130	
	MOUNTING: CENTRAL	
	FLANSCHMASS: 2097	
	FLANGE DISTANCE	
	WHEEL TRACK: L=2000	
	WHEEL TRACK:	
	BRAKE:	
	BRAKE:	
	MULTI-DISC BRAKE:HYDRAULIC 345X264	
	MULTIPLE-DISC BRAKE/HYDR.	
	LINED DISC: 4 PIECES	
	LINING	
	BRAKE CALCULATION	
	BRAKE CALCULATION	
	ACHSEINSATZ: DKV	
	DIFF.CARRIER	
	TYPE:	
	BEVEL SIDE GEAR SPLINE: N 38X1,25	
	SENS OF ROTATION:COUNTER CLOCKWISE	
	SENS OF ROTATION:CLOCKWISE	
	RING GEAR: SPIRAL DIRECTION LEFT	
	RING GEAR: SPIRAL DIRECTION L/H	
	POSITION OF RING GEAR:RIGHT	
	POSITION OF RING GEAR/RIGHT	
	FLANGE POS.BEVEL DRIVE: MIDDLE	
	FLANGE POSITION CONE-PULLEY-DRIVE	
	FLANGE CONN:AD=150 8X12,1	
	FLANGE CONN:	
	DIFFERENTIAL:	
	LIMITED-SLIP DIFFERENTIAL	

Technical Cover

Page 3 from 4

Material number: 4474.052.106



MT-L 3085 /

Pos.	Information	Amendment number
	LIM.SLIP.DIFF:	
	TYPE:	
	TYPE: DL-1600	
	BEVEL SIDE GEAR SPLINE: N 50X1,25	
	BEVEL SIDE GEAR SPLINE:	
	INTERLOCK VALUE: 45 PER CENT (%)	
	BLOCKAGE EFFECT	
	DRAWINGS:	
	DRAWINGS:	
	SECT.DRAWING: 4474 052 006(0)	
	SECT.DRAWING:	
	EINBAU: 4474 652 043(0)	
	INST.DRAWING:	
	DIAGRAMM	
	LAYOUT	
	TEST INSTRUCT.: 4474 760 004 (3)	
	TEST SPECIFICATION: 4474 760 005	
	INSTALLATION CHECK:	
	INSTALLATION CHECK:	
	ASSEMBLY INSTRUCTION:	
	MOUNTING HINTS:	
	COVER MOUNTING FACE OF RIM WITHOUT PAINT WITH GREASE AND CARDBOARD SLEEVE.	
	COVER MOUNTING FACE OF RIM WITHOUT PAINT WITH GREASE AND CARDBOARD SLEEVE.	
	SELF ADJUSTED PISTON	
	AXIAL CLEARANCE SUNGEAR 0,5-2,0	
	OIL CAPACITY:	
	OIL CAPACITY:	
	TOTAL APPROX.L	
	TOTAL: CA.29,00L	
	OIL FILLING: YES	
	WITH OIL: YES	

Technical Cover

Page 4 from 4

Material number: 4474.052.106



MT-L 3085 /

Pos.	Information	Amendment number
	DETECTED OIL CAPACITY WITH FORMSHEET	
	NR.040 29 031 TO THE CORRESPONDING DEPARTMENT	
	OIL SPECIFICATION ML 05 C/D	
	OIL SPECIFICATION	
	BRAKE CONTROL: ATF-OIL/MOTOROIL 10 W	
	BRAKE CONTROL ATF-OIL/ENGINE OIL 10W	
	WEIGHT-TOTAL: ...KG	
	WEIGHT TOTAL	
	GRUNDIERUNG: MAISGELB RAL 1006	
	PRIME COAT:	
	FARBE: LIEBHERRGELB	
	COLOR:	
	MISCELLANEOUS/REMARKS:	
	MISCELLANEOUS/REMARKS	
	QUANTITY OF LINED DISCS IN TYPE PLATE PUNCH MARK	
	QUANTITY OF LINED DISCS MUST BE SIGNED IN NAME PLATE	

Plant

Page 1 from 2

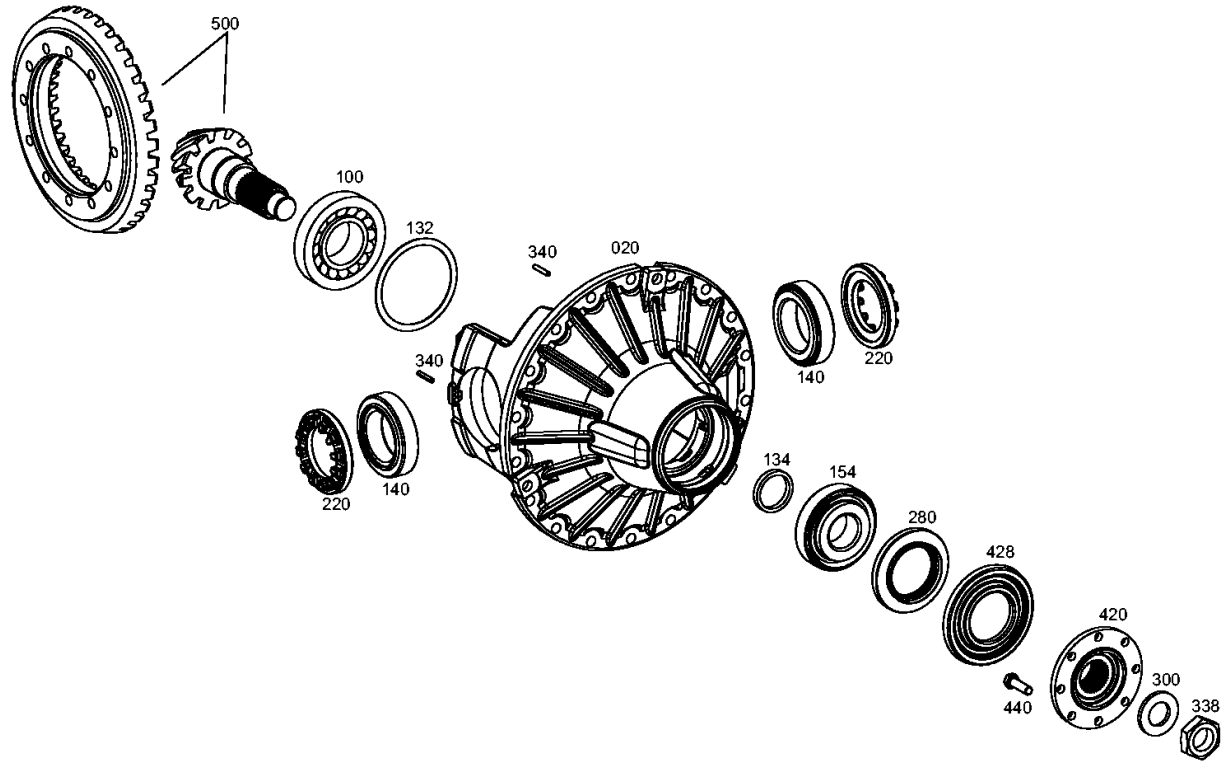
Material number: 4474.052.106

Plant: 446006603501

Material-assembly-group-no: 4460.066.035



MT-L 3085 /
AXLE INSERT



Plant

Page 2 from 2

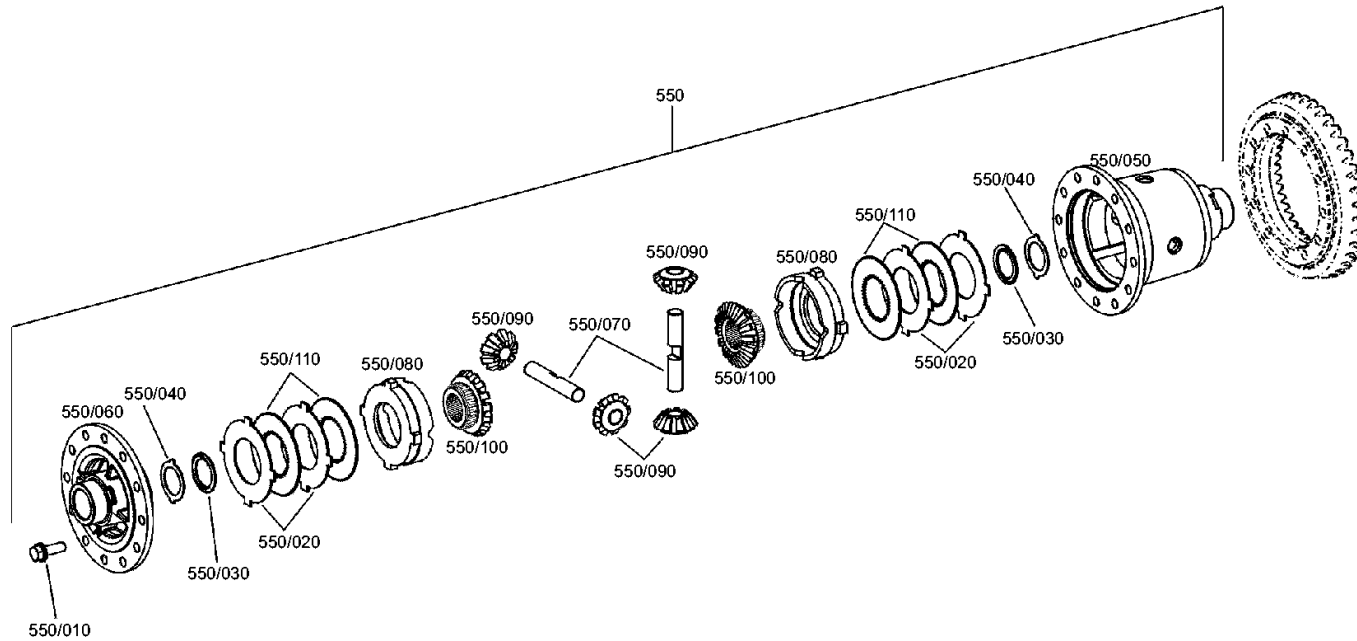
Material number: 4474.052.106

Plant: 446006603502

Material-assembly-group-no: 4460.066.035



MT-L 3085 /
AXLE INSERT



Plant

Page 1 from 1

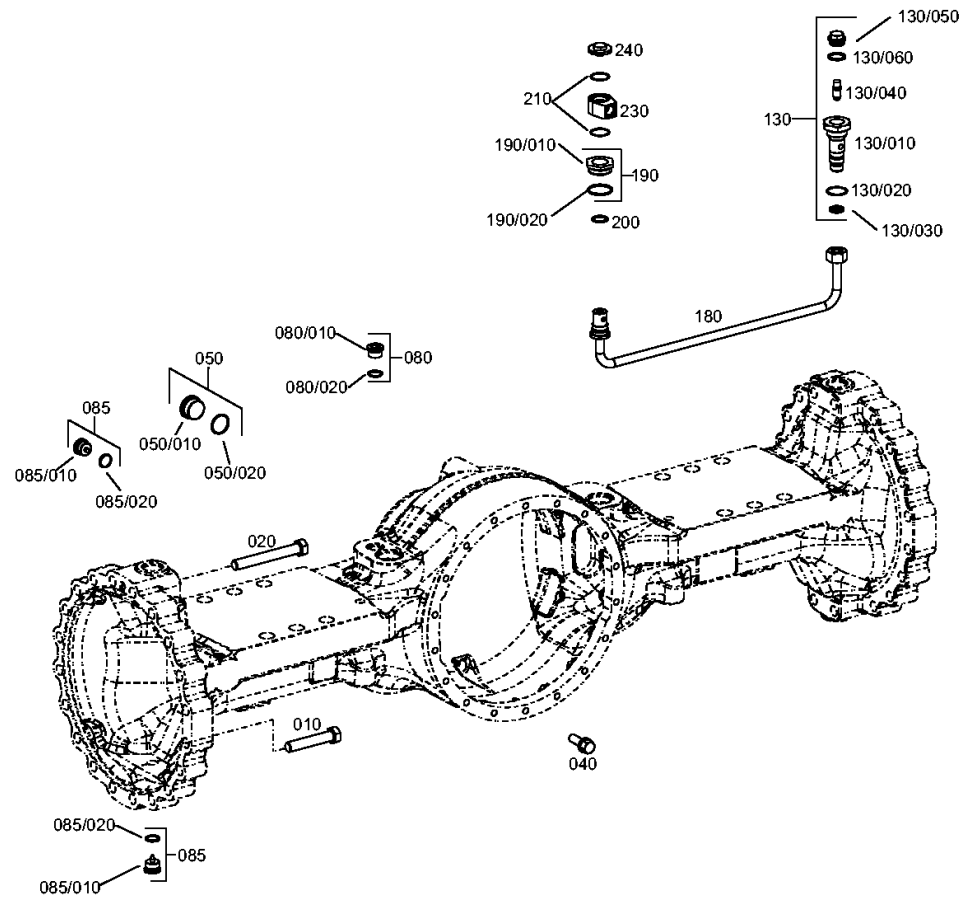
Material number: 4474.052.106

Plant: 447414502550

Material-assembly-group-no: 4474.145.025



MT-L 3085 /
AXLE CASING



Plant

Page 1 from 1

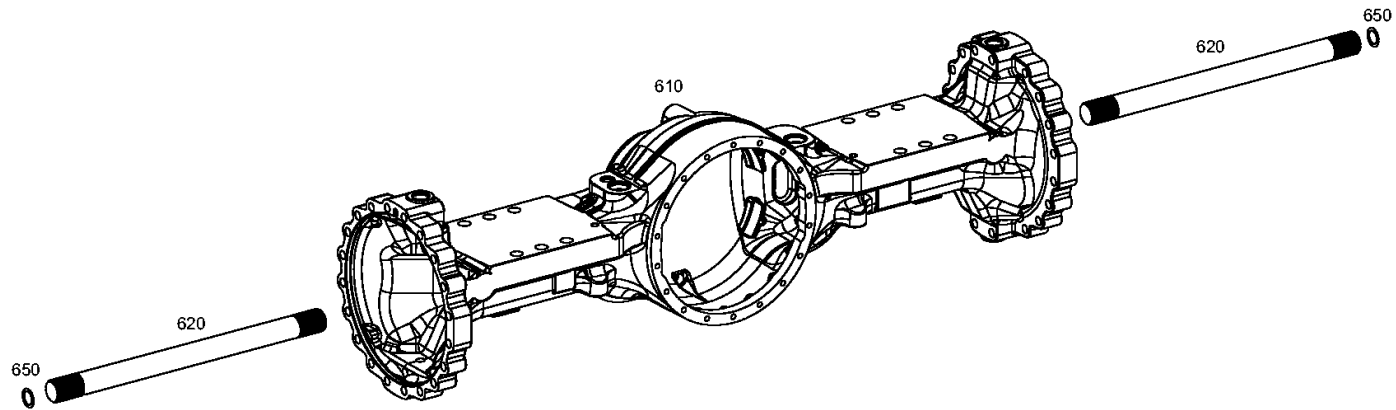
Material number: 4474.052.106

Plant: 447414542850

Material-assembly-group-no: 4474.145.428



MT-L 3085 /
AXLE CASING



Plant

Page 1 from 1

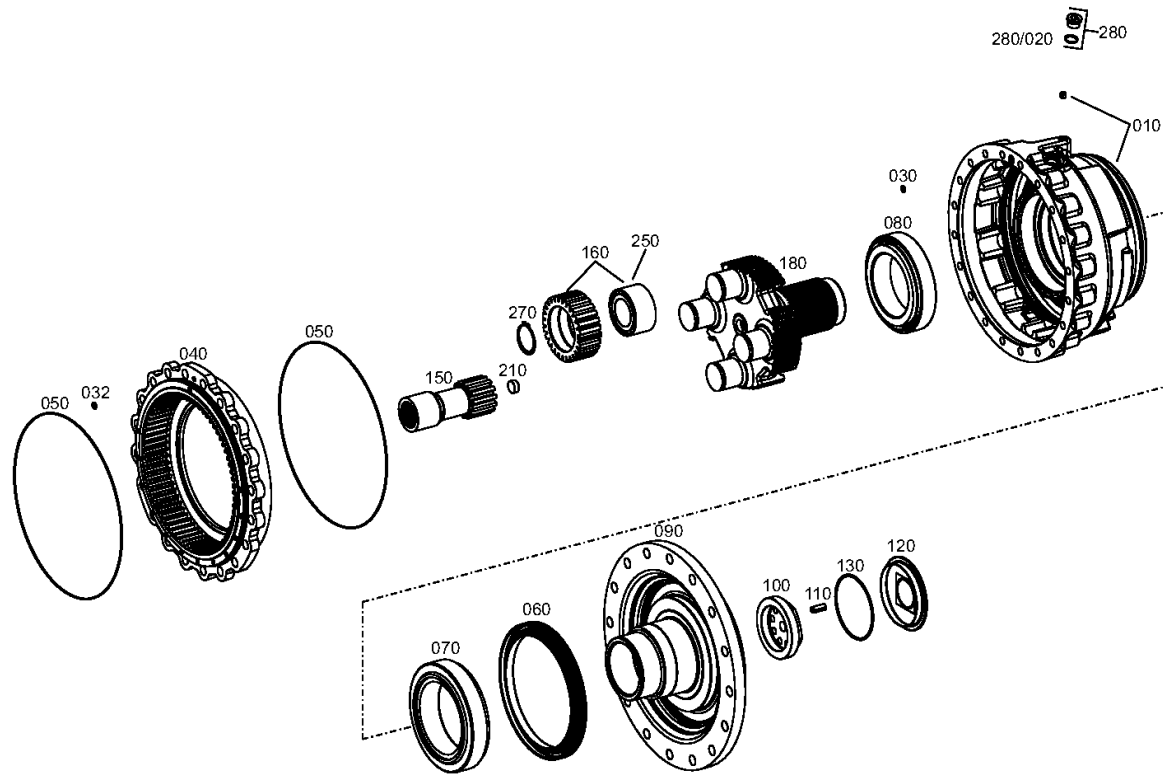
Material number: 4474.052.106

Plant: 447414608500

Material-assembly-group-no: 4474.146.085



MT-L 3085 /
OUTPUT



rechts/links
right/left
destra/sinistra
droite/gauche
derecho/izquierdo

Plant

Page 1 from 1

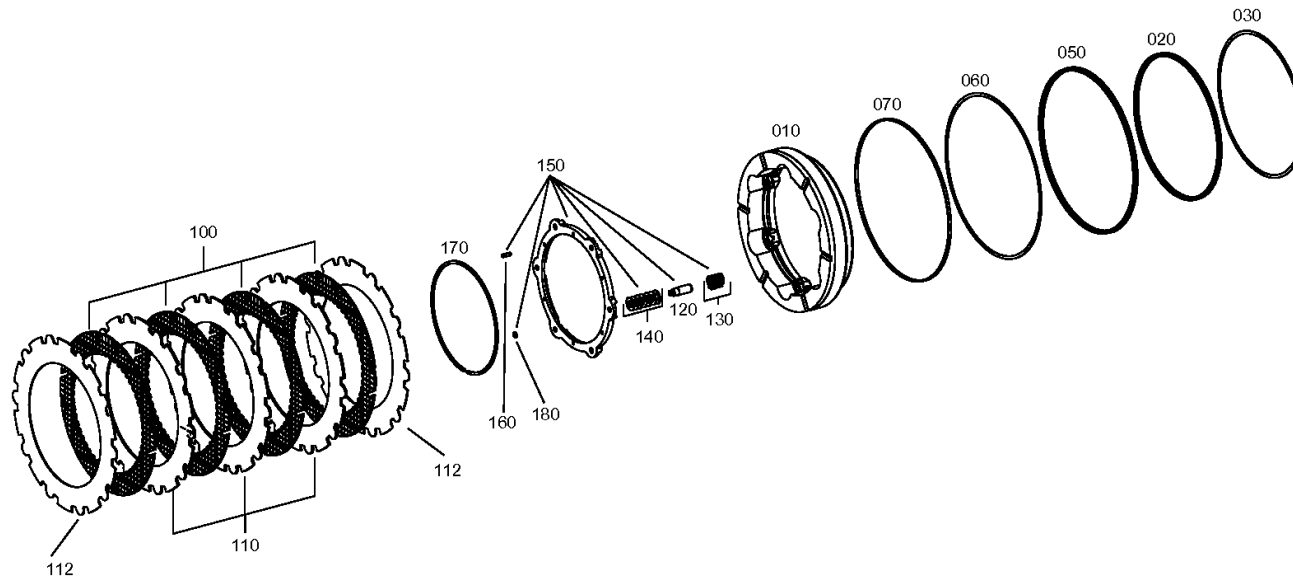
Material number: 4474.052.106

Plant: 447414701100

Material-assembly-group-no: 4474.147.011



MT-L 3085 /
BRAKE



Plant

Page 1 from 1

Material number: 4474.052.106

Plant: 414313900300

Material-assembly-group-no: 4143.139.003



MT-L 3085 /
TYPE PLATE

