



Spare Parts Catalog

MT-L 3095

Material number: 4474.053.069

Current date: 27.01.2020

ZF Friedrichshafen AG
Hauptverwaltung
80038 Friedrichshafen
Deutschland

Telefon: +49 7541 77-0

Telefax: +49 7541 77-908000

www.zf.com

zuständiges Werk:
Passau

Notes relating to the spare parts catalog

Setup of the spare parts catalog

- Cover sheet
- Technical Cover (only in SDM print)
- Overview of figures
- Figure
- Associated parts list
- Next figure
- Associated parts list
- ...

Figure and parts list



Overview of figures

Bildtafel Figure	Sachnummer Product number	Benennung (Description)	Technische Info Technical info	Description (Benennung)	Menge Quantity	Einheit Unit
068.08.17	1316.170.001	AUSLEGER	WL	SHIFT TURRET	1	Stk
068.08.06	1316.170.031	DECKEL	WL*H-H *VM	COVER	1	Stk
068.08.14	1316.170.808	DECKEL	WL*AUSL+GEH*H-H*HF160N	COVER	1	Stk
08	1316.170.441	ANSCHLUSSTEILE	WL*NG-VORB*RG-SCHL*168N *BAJONETT	CONNECTING PARTS	1	Stk

The "gap" indicates that there is no separate graphics panel (poster) for this assembly
The parts of this assembly are shown with the same mid-section number on the figure

1 Positions and subpositions

Pos.	Sachnummer Product number	Benennung (Description)	Technische Info Technical info	Description (Benennung)	Menge Quantity	Einheit Unit
0370	1315.201.054	RUECKLAUFBOLZEN	KPL.16S151*SG*L= 79	REV.IDLER SHAFT	1	Stk
/0120	0631.329.293	SPANNSTIFT		SLOT. PIN	1	Stk

Positions marked with "/" are the individual items of a completion
For example: Position 0370 contains a centering pin with the position /0120

2 Combinations with standardized parts

Pos.	Sachnummer Product number	Benennung (Description)	Technische Info Technical info	Description (Benennung)	Menge Quantity	Einheit Unit
0630		VERSCHL.SCHR.		SCREW PLUG	1	Stk
	0636.302.067	VERSCHL.SCHR.		SCREW PLUG	1	Stk
	0634.801.249	DICHTRING	A 26 X 31	SEALING RING	1	Stk

The parts list shows the components included in the combination of standardized parts

3 Depiction of position/item number on the figure and in the parts list

01.620 - on the figure 01 relates to the assembly in which the position is included. Due to program-related reasons, it is shown on the figure.

0620 - in the parts list

Pos.	Sachnummer Product number	Benennung (Description)	Technische Info Technical info	Description (Benennung)	Menge Quantity	Einheit Unit
0620	0732.040.736	DRUCKFEDER		COMPRESSION SPRING	1	Stk

4 *-Positions

Positions marked with an * are optional i.e. inclusion in the parts list is not mandatory.
The following note is shown on the figure

je nach Stücklistenausführung
depending on spec. number
*
suivant la nomenclature
secondo la distinta base

5 Parts, dotted display

Parts with dotted display on the figure are only used for orientation of other parts

Technical Cover

Page 1 from 2

Material number: 4474.053.069



MT-L 3095 /

Pos.	Information	Amendment number
	KUNDENNAME: FA. KIROVETS	
	FAHRZEUGBEZEICHNUNG: RADLADER	
	REIFENRADIUS DYN: 0,765 M	
	ENDGESCHWINDIGKEIT: 31 KM/H	
	PRODUKTBESCHREIBUNG: ZF- MULTITRAC ACHSE	
	FAHRZEUGART: RADLADER	
	ACHSENTYP: MT-L 3095	
	AUSFUEHRUNG: STARR	
	ACHSANORDNUNG: HINTERACHSE	
	DREHRICHTUNG RITZEL : EDUL	
	TELLERRADLAGE: LINKS	
	SPIRALRICHTUNG: LINKS	
	ACHSEINSATZ: HKV	
	ANTRIEBSFLANSCH: AD 180 10 X M16 X 1,5 X 45	
	FLANSCHMASS.: 2.314 MM	
	AUFHAENGUNG: ZENTRALE PENDELUNG OHNE B CKE	
	BEFESTIGUNGSMASSE/MM: 290,55X105 /5,5X258 296X14XM16	
	QUERDIFFERENTIAL: SELBSTSPERRDIFFERENTIAL	
	SPERRWERT: 45%	
	ACHS}BERSETZUNG: 23,334	
	PLANETENTRIEB: P4, I=6,0	
	BREMSE: BETRIEBSBREMSE	
	BETRIEBSBREMSE: 2 X LAMELLENBREMSE 345X264X6	
	LAMELLENART: SINTERLAMELLE	
	BREMSANSCHLUSS: M18X1,5 VERTIKAL	
	FELGENLOCHKREIS: 425,00 MM	
	WDR ABDICHTUNGSART: GLEITRING	
	RADANSCHLUSS: GEWINDE 20 X M22 X 1,5	
	RADMUTTER: OHNE	
	ACHSE OELF}LLUNG: MIT	
	ACHSE OELKUEHLUNG: OHNE	
	OELSORTE: TE ML 05 (TITAN POWERFLUID)	
	OELSORTE ZUL.: TE ML 05	

Technical Cover

Page 2 from 2

Material number: 4474.053.069



MT-L 3095 /

Pos.	Information	Amendment number
	ACHSE OELFILTRIERUNG: OHNE	
	PRIMER PAINT: YELLOW RAL 1006	
	ABD. FARBFREIE FL{CHE: ANTRIEBSFLANSCH	
	TYPENSCHILD	
	TYPENSCHILD: ZF- STANDARD	
	ACHSE ENTLUEFTER: MIT	
	OELMENGE GESAMT CA: 40,0 L	
	DOKUMENTATION: -----	
	SCHNITTZEICHNUNG: 4474 053 003	
	EINBAUZEICHNUNG: 4474 653 042	
	FAHRLEISTUNGSBER.: 4657 707 011	
	PRUEFANWEISUNG: 4474 760 004 / 005	
	BREMSBERECHNUNG: 4474 760 V012	
	BEMERKUNGEN: WORKFLOW: 20000928	

Plant

Page 1 from 2

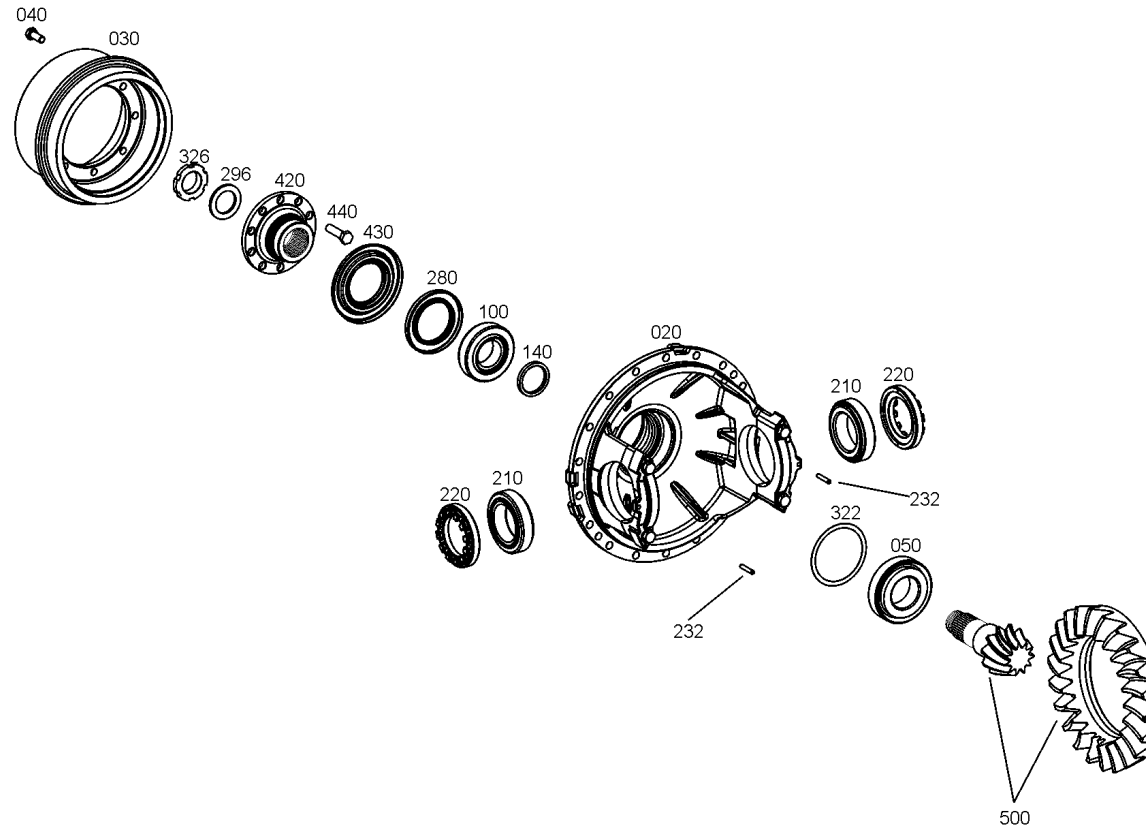
Material number: 4474.053.069

Plant: 446001602801

Material-assembly-group-no: 4460.016.062



MT-L 3095 /
HKV



Plant

Page 2 from 2

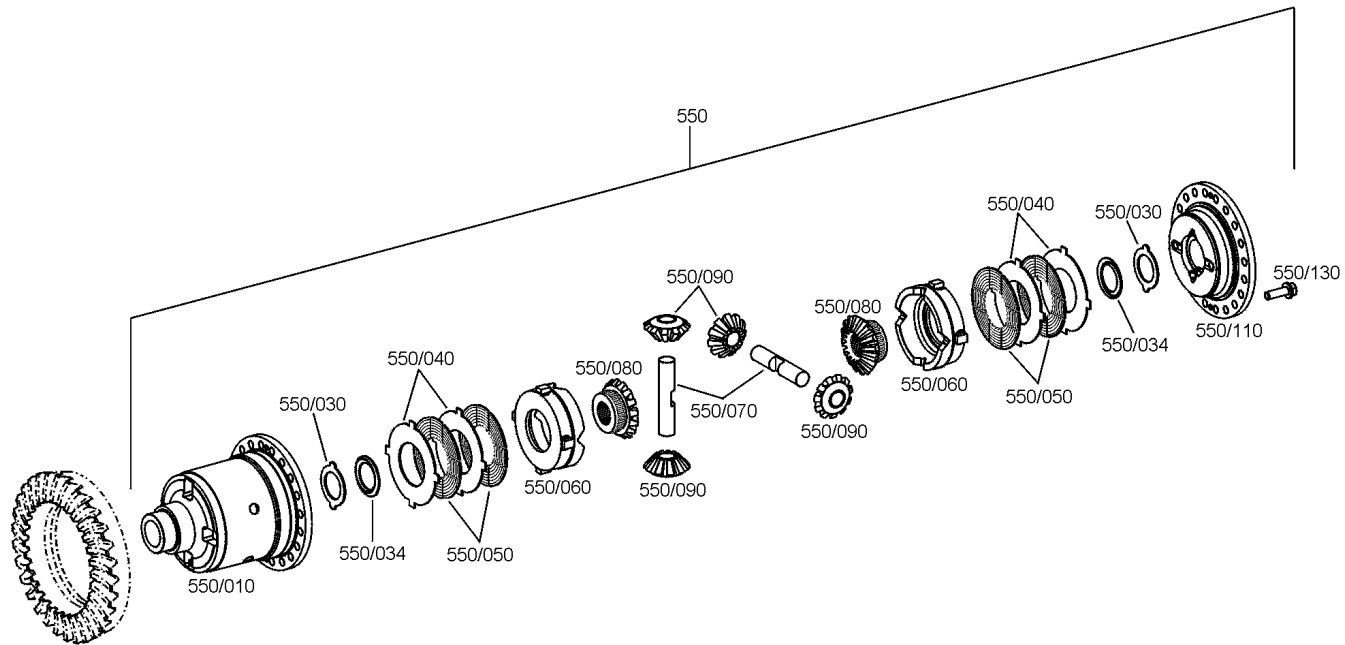
Material number: 4474.053.069

Plant: 446001602802

Material-assembly-group-no: 4460.016.062



MT-L 3095 /
HKV



Plant

Page 1 from 1

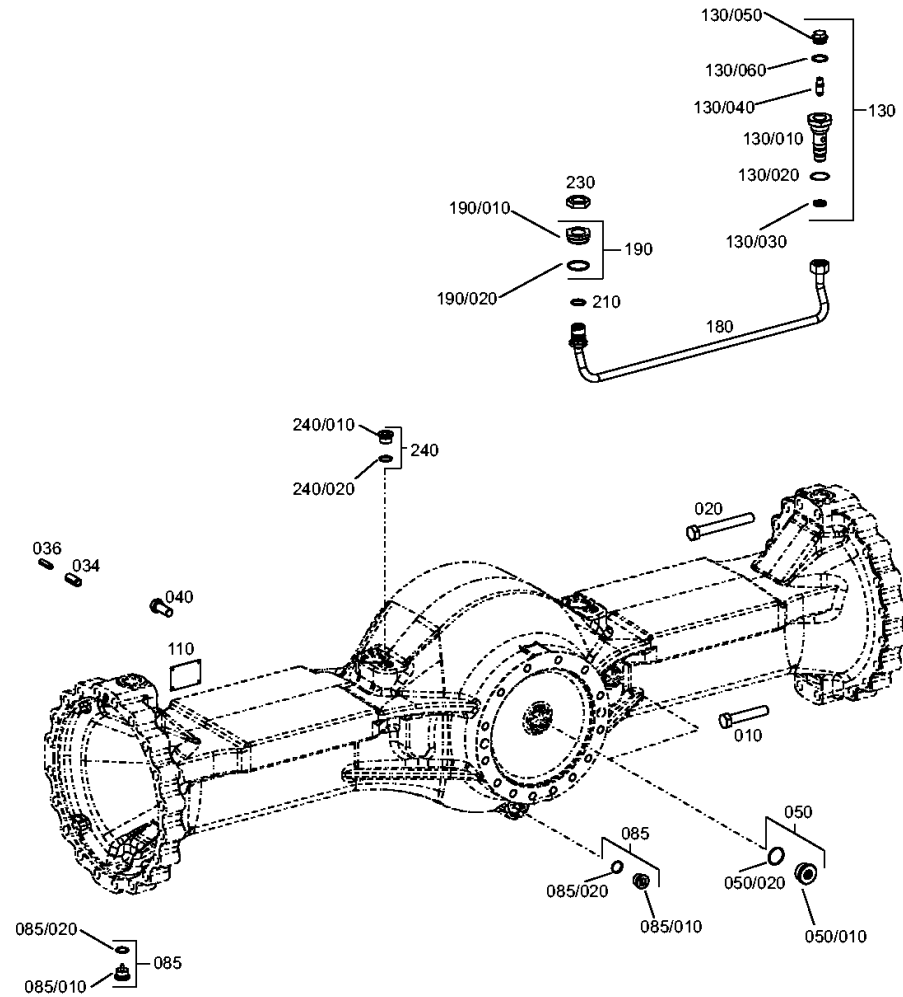
Material number: 4474.053.069

Plant: 447414507700

Material-assembly-group-no: 4474.145.077



MT-L 3095 /
AXLE CASING



Plant

Page 1 from 1

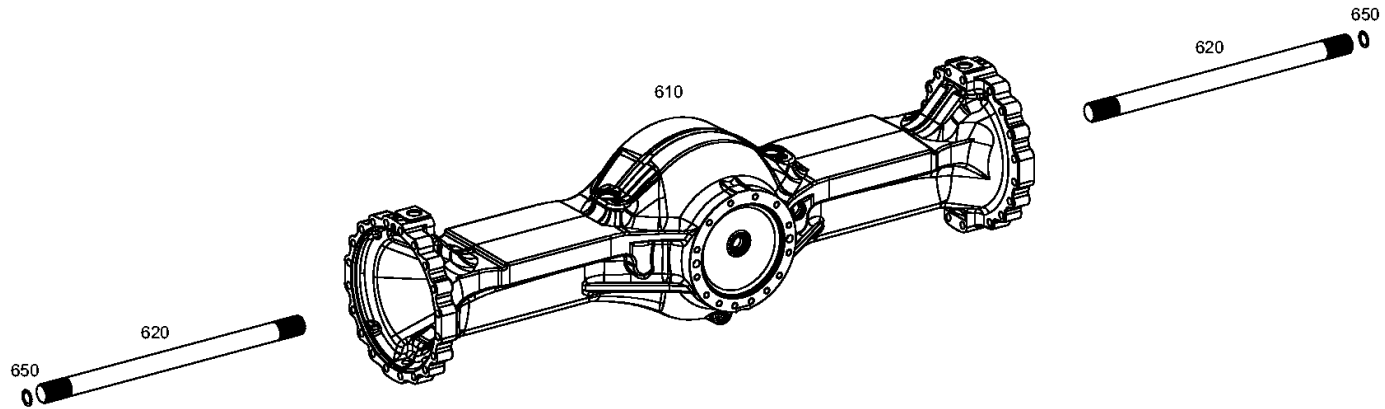
Material number: 4474.053.069

Plant: 447414551700

Material-assembly-group-no: 4474.145.517



MT-L 3095 /
AXLE CASING



Plant

Page 1 from 1

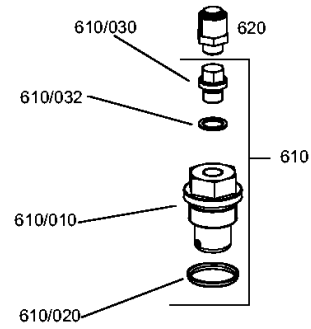
Material number: 4474.053.069

Plant: 447414546200

Material-assembly-group-no: 4474.145.462



MT-L 3095 /
AXLE CASING



Plant

Page 1 from 1

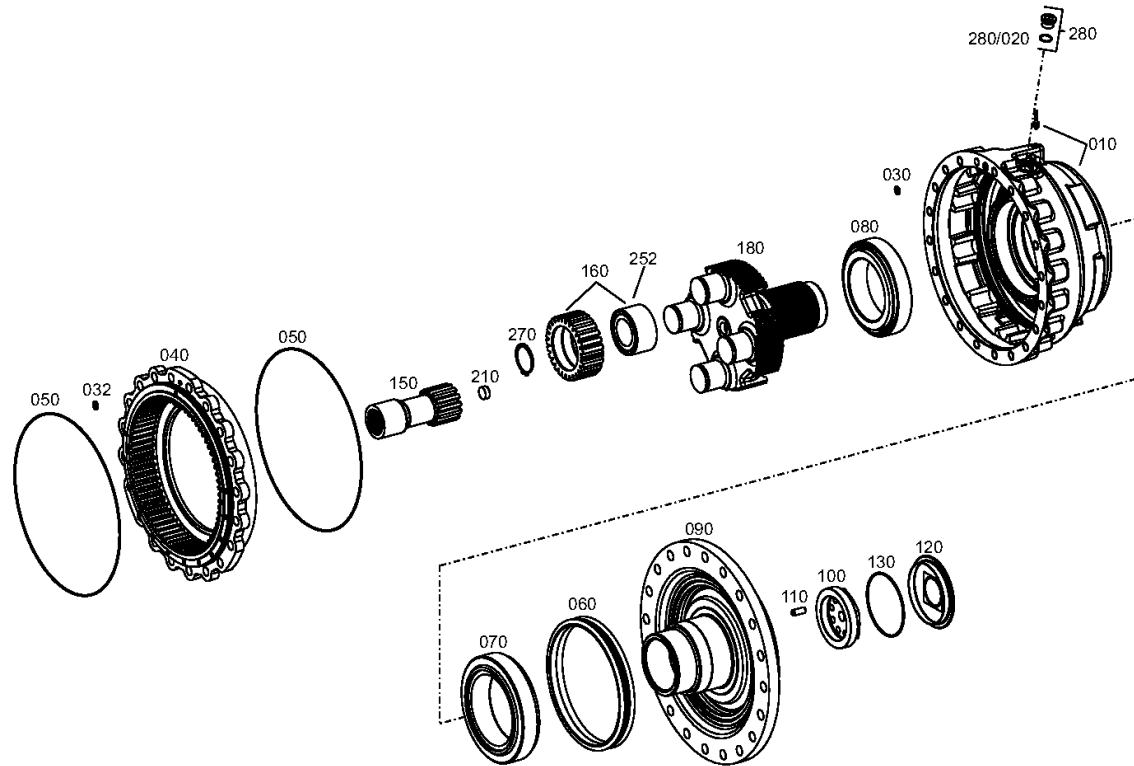
Material number: 4474.053.069

Plant: 447414604900

Material-assembly-group-no: 4474.146.049



MT-L 3095 /
OUTPUT



rechts/links
right/left
destra/sinistra
droite/gauche
derecho/izquierdo

Plant

Page 1 from 1

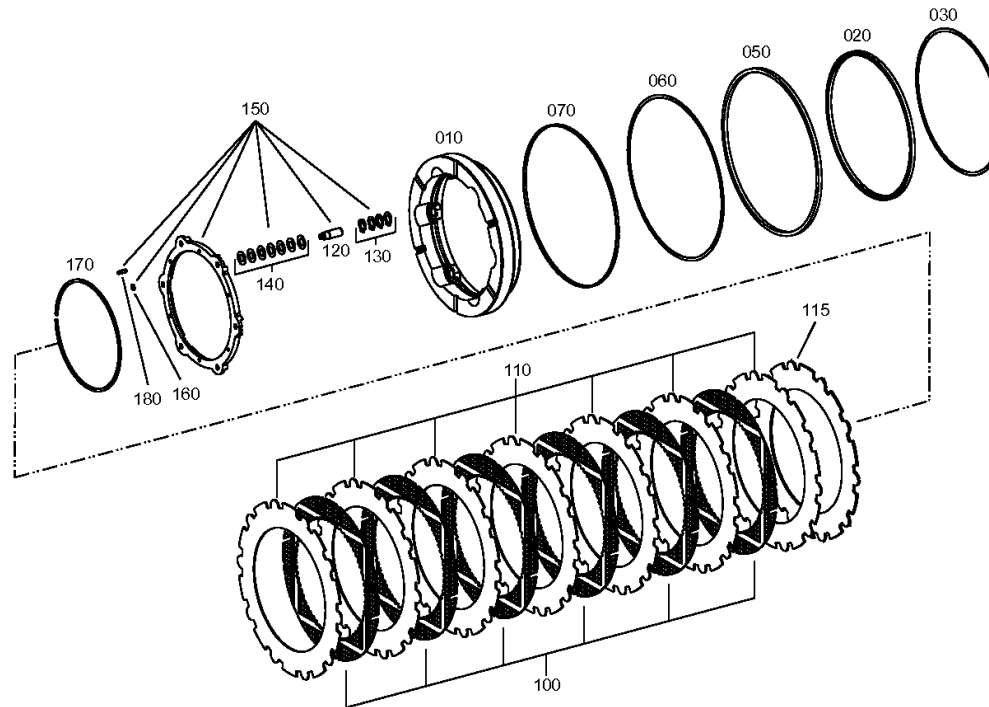
Material number: 4474.053.069

Plant: 447414703100

Material-assembly-group-no: 4474.147.031



MT-L 3095 /
BRAKE



Plant

Page 1 from 1

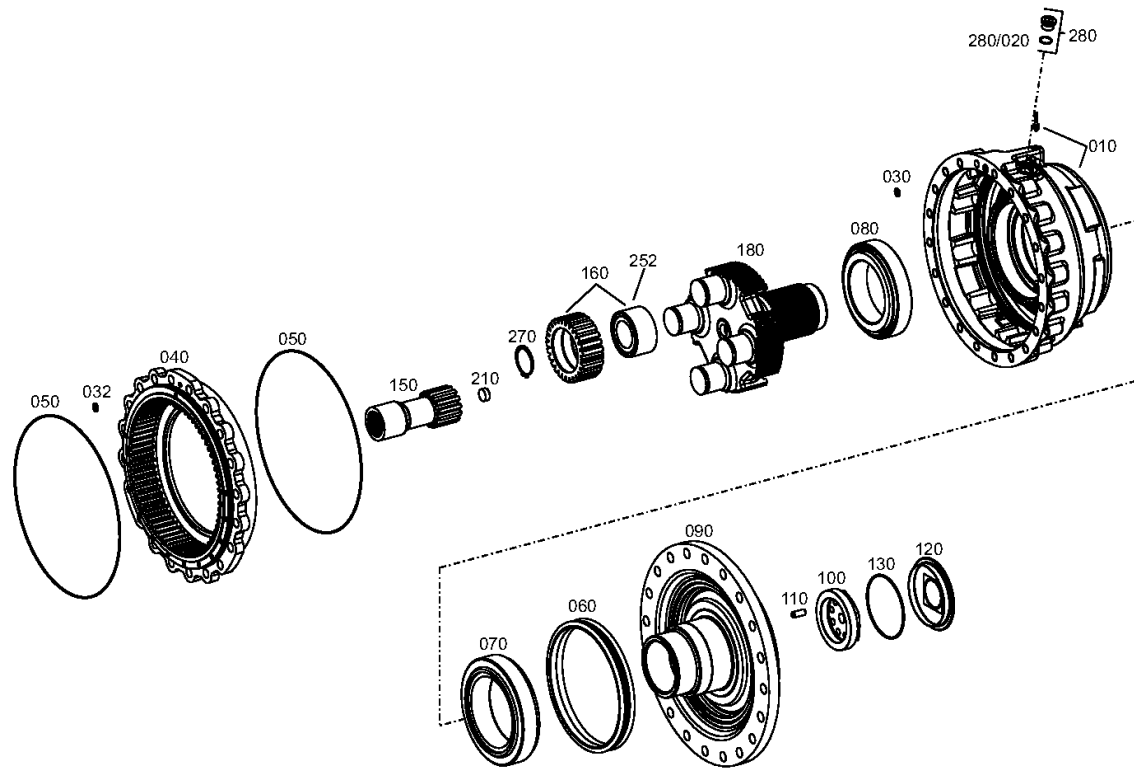
Material number: 4474.053.069

Plant: 447414604900

Material-assembly-group-no: 4474.146.049



MT-L 3095 /
OUTPUT



rechts/links
right/left
destra/sinistra
droite/gauche
derecho/izquierdo

Plant

Page 1 from 1

Material number: 4474.053.069

Plant: 447414703100

Material-assembly-group-no: 4474.147.031



MT-L 3095 /
BRAKE

