



Spare Parts Catalog

MT-L 3105 II

Material number: 4474.054.208

Current date: 22.10.2019

ZF Friedrichshafen AG
Hauptverwaltung
80038 Friedrichshafen
Deutschland

Telefon: +49 7541 77-0

Telefax: +49 7541 77-908000

www.zf.com

zuständiges Werk:
Passau

Notes relating to the spare parts catalog

Setup of the spare parts catalog

- Cover sheet
- Technical Cover (only in SDM print)
- Overview of figures
- Figure
- Associated parts list
- Next figure
- Associated parts list
- ...

Figure and parts list



Overview of figures

Bildtafel Figure	Sachnummer Product number	Benennung (Description)	Technische Info Technical info	Description (Benennung)	Menge Quantity	Einheit Unit
068.08.17	1316.170.001	AUSLEGER	WL	SHIFT TURRET	1	Stk
068.08.06	1316.170.031	DECKEL	WL*H-H *VM	COVER	1	Stk
068.08.14	1316.170.808	DECKEL	WL*AUSL+GEH*H-H*HF160N	COVER	1	Stk
08	1316.170.441	ANSCHLUSSTEILE	WL*NG-VORB*RG-SCHL*168N *BAJONETT	CONNECTING PARTS	1	Stk

The "gap" indicates that there is no separate graphics panel (poster) for this assembly
The parts of this assembly are shown with the same mid-section number on the figure

1 Positions and subpositions

Pos.	Sachnummer Product number	Benennung (Description)	Technische Info Technical info	Description (Benennung)	Menge Quantity	Einheit Unit
0370	1315.201.054	RUECKLAUFBOLZEN	KPL.16S151*SG*L= 79	REV.IDLER SHAFT	1	Stk
/0120	0631.329.293	SPANNSTIFT		SLOT. PIN	1	Stk

Positions marked with "/" are the individual items of a completion
For example: Position 0370 contains a centering pin with the position /0120

2 Combinations with standardized parts

Pos.	Sachnummer Product number	Benennung (Description)	Technische Info Technical info	Description (Benennung)	Menge Quantity	Einheit Unit
0630		VERSCHL.SCHR.		SCREW PLUG	1	Stk
	0636.302.067	VERSCHL.SCHR.		SCREW PLUG	1	Stk
	0634.801.249	DICHTRING	A 26 X 31	SEALING RING	1	Stk

The parts list shows the components included in the combination of standardized parts

3 Depiction of position/item number on the figure and in the parts list

01.620 - on the figure 01 relates to the assembly in which the position is included. Due to program-related reasons, it is shown on the figure.

0620 - in the parts list

Pos.	Sachnummer Product number	Benennung (Description)	Technische Info Technical info	Description (Benennung)	Menge Quantity	Einheit Unit
0620	0732.040.736	DRUCKFEDER		COMPRESSION SPRING	1	Stk

4 *-Positions

Positions marked with an * are optional i.e. inclusion in the parts list is not mandatory.
The following note is shown on the figure

je nach Stücklistenausführung
depending on spec. number
*
suivant la nomenclature
secondo la distinta base

5 Parts, dotted display

Parts with dotted display on the figure are only used for orientation of other parts

Technical Cover

Page 1 from 2

Material number: 4474.054.208



MT-L 3105 II /

Pos.	Information	Amendment number
	VEHICLE DATA: -----	
	CUSTOMER: LIEBHERR	
	CUSTOMER-IDENT-NO.: 10800389	
	VEHICLE DESIGNATION: L580/576/566	
	TYRE SIZE: 26.5-25 RL-2	
	MAX. SPEED: 40 KM/H	
	PRODUCT DESCRIPTION: ZF- MULTITRAC-AXLE	
	VEHICLE TYPE: WHEEL LOADER	
	AXLE TYPE: MT-L 3105 II	
	VERSION: RIGID	
	AXLE ARRANGEMENT: FRONT AXLE	
	DIRECTION OF ROTATION: CCW	
	CROWN WHEEL POSITION: RIGHT	
	SPIRAL DIRECTION: LEFT	
	INPUT FLANGE: AD 180 10XM16X1,5X45	
	FLANGE TO FLANGE DIM.: 2.314 MM	
	AXLE INSTALLATION: SPRING PAD	
	MOUNTING DIMENSIONS: 760X980X1220 12XD=33	
	BRAKE TUBE: INTERNAL	
	MAIN DIFFERENTIAL: LIMITED-SLIP DIFFERENTIAL	
	DIFFERENTIAL TYPE/SIZE: DL-2400/LKV	
	LOCKING RATIO: 45%	
	AXLE RATIO: 24,666	
	PLANETARY DRIVE: P4, I=6,0	
	SEALING TYPE OF SHAFT S METAL FACE SEAL	
	BRAKE : SERVICE BRAKE	
	SERVICE BRAKE : 2X MULTI-DISC BRAKE 345X264X6	
	MULTI-DISC BRAKE: PAPER	
	PISTON SEAL: STANDARD	
	BRAKE PORT SIZE: M18 X 1,5 VERTIKAL	
	RIM PITCH CIRCLE DIAM.: 425,00 MM	
	WHEEL CONNECTION: THREAD 20 X M22 X 1,5	
	WHEEL NUTS: WITHOUT	

Technical Cover

Page 2 from 2

Material number: 4474.054.208



MT-L 3105 II /

Pos.	Information	Amendment number
	OIL FILLING AXLE DRIVE: WITH	
	OIL FILLER: STANDARD	
	AXLE OIL COOLING: WITHOUT	
	OIL - GRADE AXLE DRIVE: SAE 90 LS SPEZ. MIL-L 2105 D	
	OIL - GRADE ALLOWED: TE ML 05	
	PRIMER PAINT: LIEBHERRGELB	
	PAINT-FREE AREA: INPUT FLANGE	
	TYPE PLATE	
	TYPE PLATE: LIEBHERR	
	AXLE BREATHER: WITHOUT	
	OIL FILL QUANTITY CA: 42,00 L	
	DOCUMENTATION: -----	
	SECTION DRAWING: 4474.054.216	
	INSTALLATION DRAWING: 4474.654.209	
	INSTALLATION INSTRUCTIO 4474.700.088	
	TESTING INSTRUCTION: 4474.760.009	

Plant

Page 1 from 1

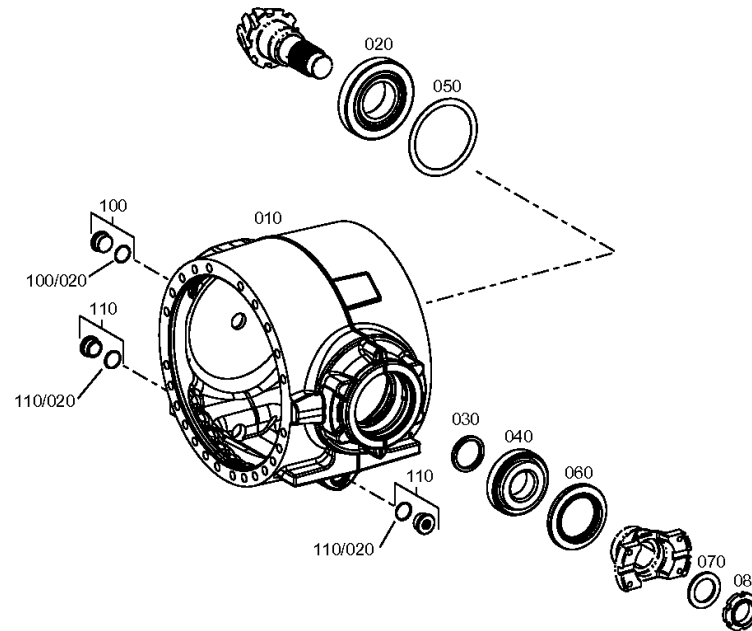
Material number: 4474.054.208

Plant: 447415304450

Material-assembly-group-no: 4474.153.044



MT-L 3105 II /
AXLE DRIVE HOUSING



Plant

Page 1 from 1

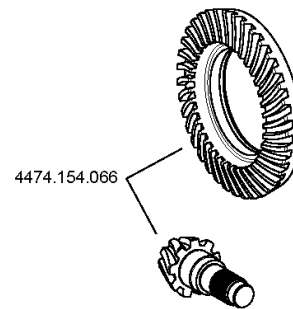
Material number: 4474.054.208

Plant: 447415406650

Material-assembly-group-no: 4474.154.066



MT-L 3105 II /
INPUT



Plant

Page 1 from 2

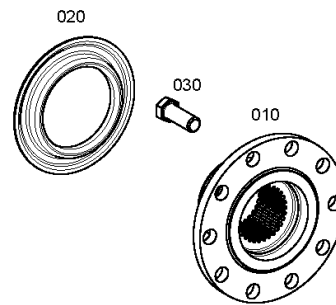
Material number: 4474.054.208

Plant: 446012506500

Material-assembly-group-no: 4460.125.065



MT-L 3105 II /
INPUT FLANGE



Plant

Page 2 from 2

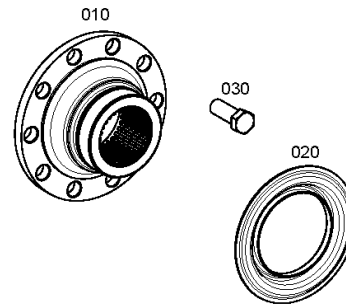
Material number: 4474.054.208

Plant: 446012506550

Material-assembly-group-no: 4460.125.065



MT-L 3105 II /
INPUT FLANGE



Plant

Page 1 from 1

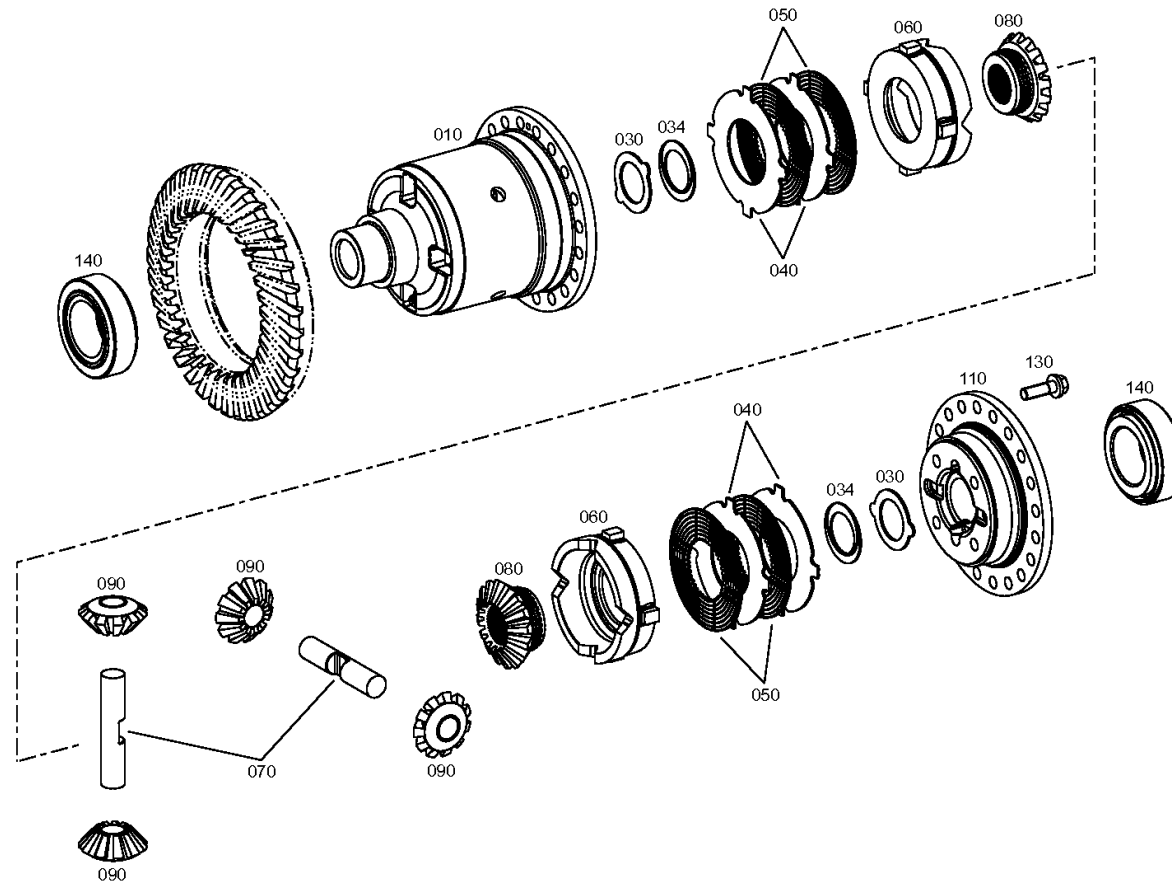
Material number: 4474.054.208

Plant: 448117105600

Material-assembly-group-no: 4481.171.056



MT-L 3105 II /
LIMIT.SLIP DIFF



Plant

Page 1 from 2

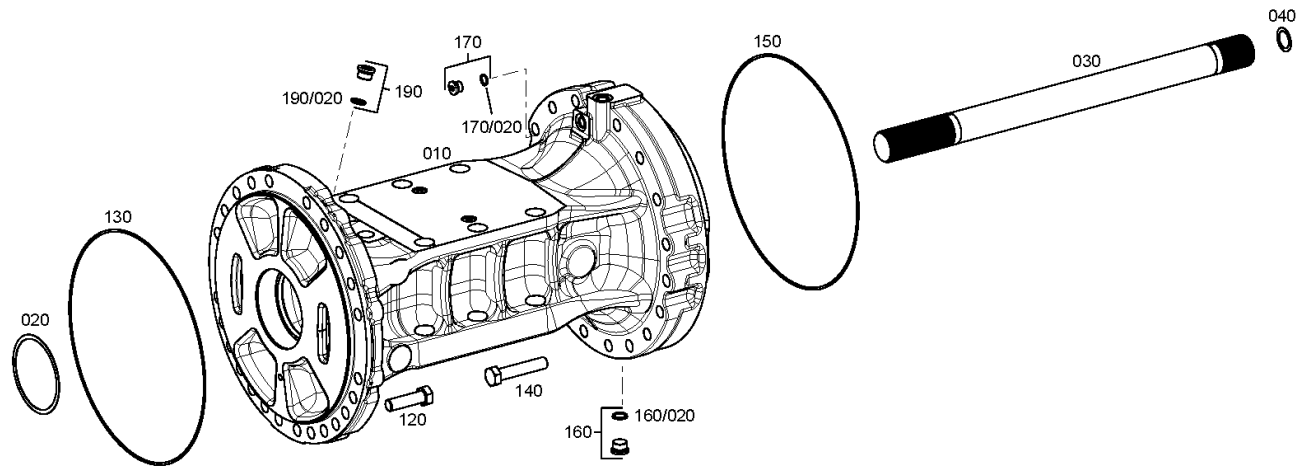
Material number: 4474.054.208

Plant: 447415503900

Material-assembly-group-no: 4474.155.039



MT-L 3105 II /
AXLE CASING



Plant

Page 2 from 2

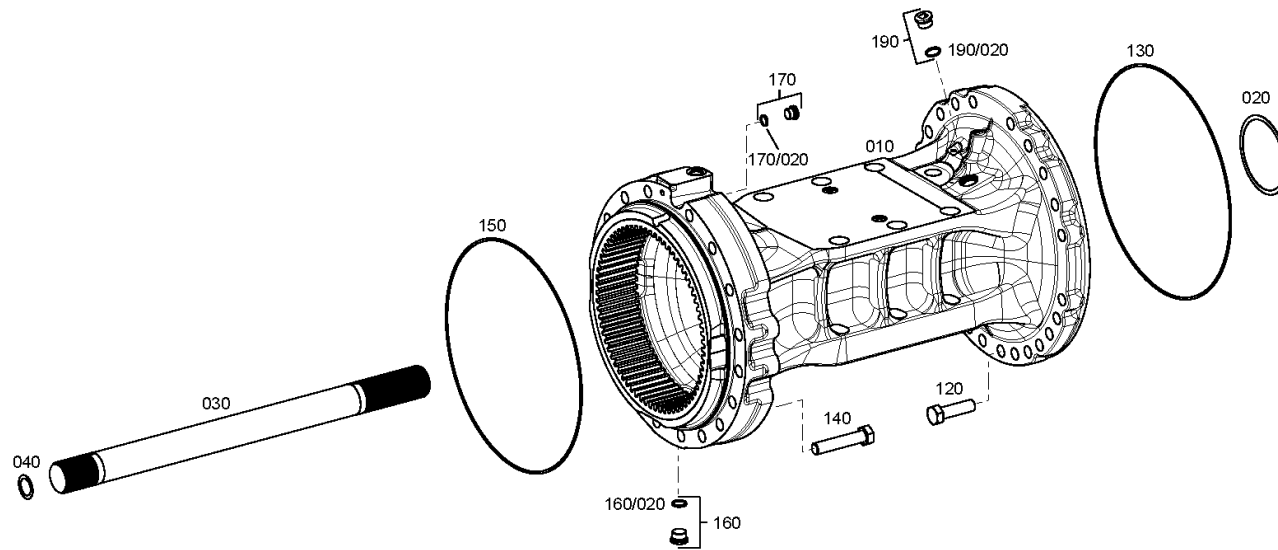
Material number: 4474.054.208

Plant: 447415503950

Material-assembly-group-no: 4474.155.039



MT-L 3105 II /
AXLE CASING



Plant

Page 1 from 1

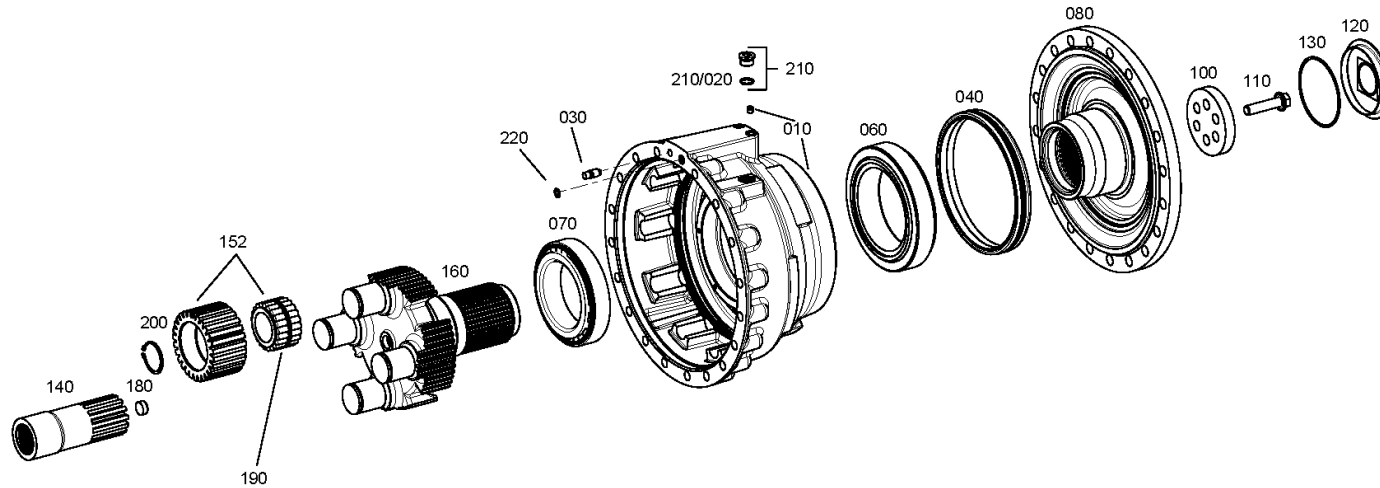
Material number: 4474.054.208

Plant: 447415609300

Material-assembly-group-no: 4474.156.093



MT-L 3105 II /
OUTPUT



Plant

Page 1 from 2

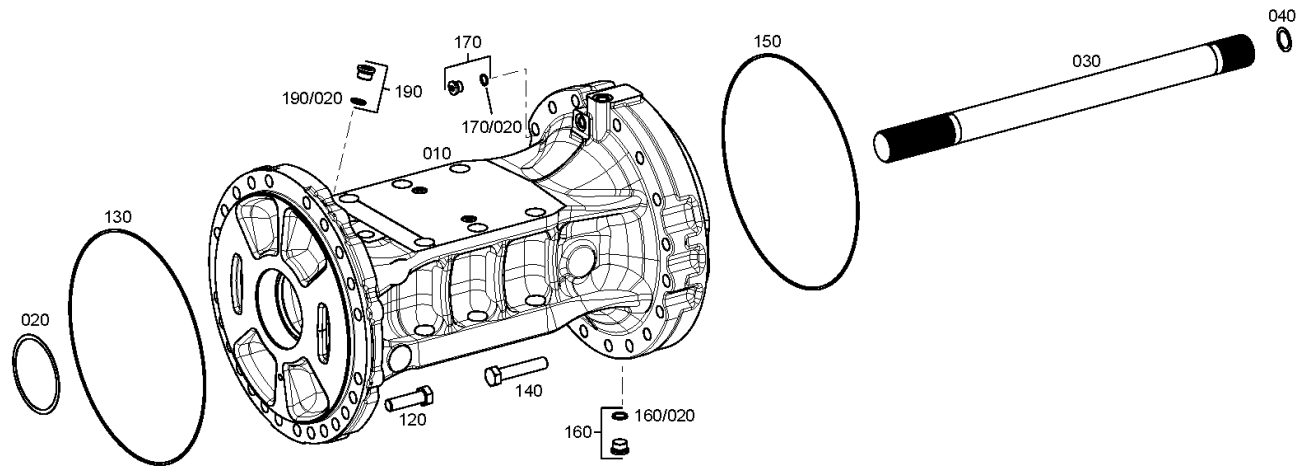
Material number: 4474.054.208

Plant: 447415503900

Material-assembly-group-no: 4474.155.039



MT-L 3105 II /
AXLE CASING



Plant

Page 2 from 2

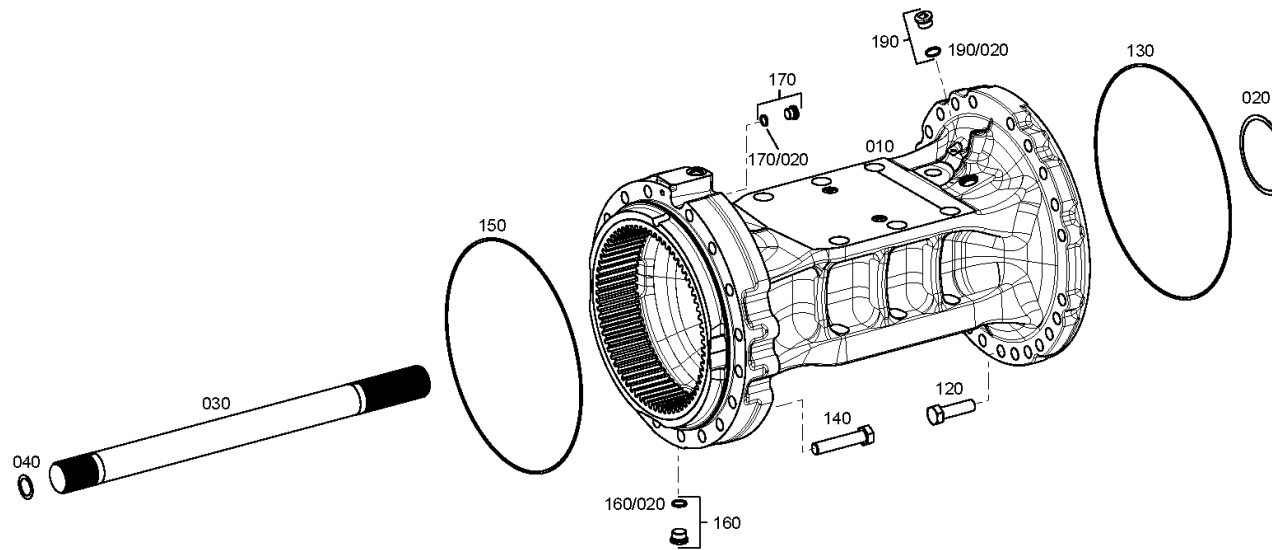
Material number: 4474.054.208

Plant: 447415503950

Material-assembly-group-no: 4474.155.039



MT-L 3105 II /
AXLE CASING



Plant

Page 1 from 1

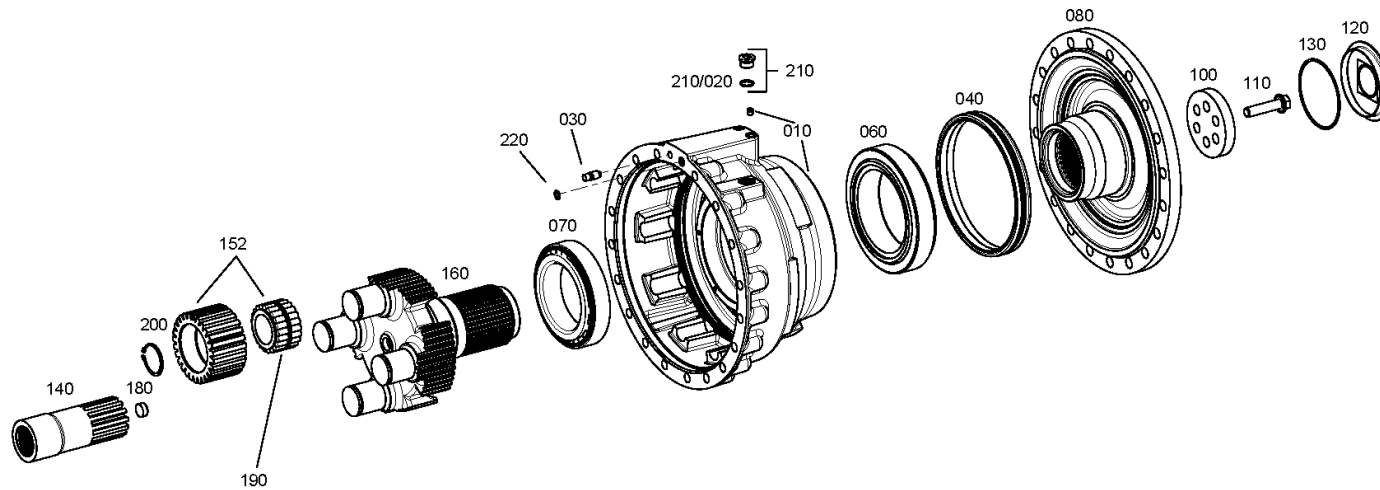
Material number: 4474.054.208

Plant: 447415609300

Material-assembly-group-no: 4474.156.093



MT-L 3105 II /
OUTPUT



Plant

Page 1 from 1

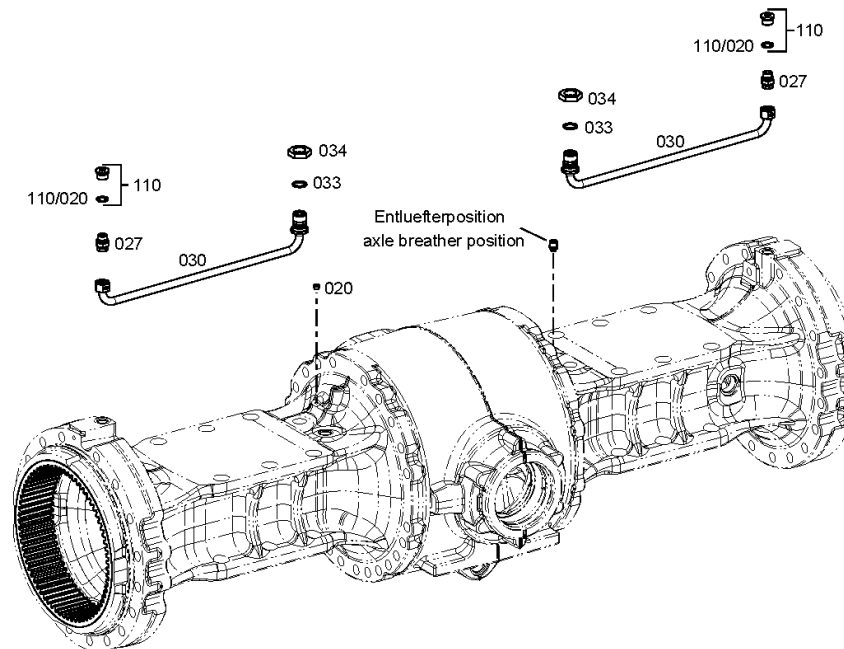
Material number: 4474.054.208

Plant: 447415803000

Material-assembly-group-no: 4474.158.030



MT-L 3105 II /
AXLE PARTS



Plant

Page 1 from 1

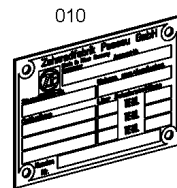
Material number: 4474.054.208

Plant: 414313900300

Material-assembly-group-no: 4143.139.003



MT-L 3105 II /
TYPE PLATE



Plant

Page 1 from 1

Material number: 4474.054.208

Plant: 447429844800

Material-assembly-group-no: 4474.298.448



MT-L 3105 II /
WHEEL HEAD

Kit
4474.298.448

